

fibreLED

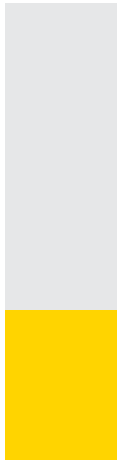
LED Lighting Specialists



LED & ARCHITECTURAL L I G H T I N G

Contents

fibreLED
LED Lighting Specialists



About ELECTRON SA

ELECTRON SA was established in 1978 and since then has been one of the leading manufacturing companies in the commercial lighting field worldwide. The company has been active in the international field for more than twelve years and today exports its products in more than 65 countries worldwide, sealing its dynamic presence by participating in international lighting exhibitions around the world. ELECTRON is located in its 2.800 sq meter building in Athens, Greece.

ELECTRON SA designs, develops and manufactures in Greece Professional Lighting Management Systems, Dimmers, and other Lighting Management Equipment of the latest technology.

ELECTRON is also proud to present the new patent-pending DMR.730 dimmer specially designed for 230V dimmable LEDs that achieves stable output voltage unaffected from mains fluctuations.

In addition, the company presents the new ARLIC and MINI ARLIC architectural lighting control systems for large multi spaces or small installations.

ELECTRON has also launched the Premium Series of wall-mounted multifunctional Controllers, available in different versions to meet individual requirements and specifications: Leading Edge Dimmers, Trailing Edge Dimmers, Relay Switches, HF Fluorescent Controllers, Sine Wave Dimmers, LED Drivers, Dali Drivers.

In addition, ELECTRON designs, develops and manufactures LED power supplies, LED converters, LED boosters, LED controllers, Splitters, Relay packs and other lighting equipment. All products are manufactured with high quality components, such as: MCBs, mains switches, RVD by HAGER, power inlets by MENNEKES-WIELAND-ABL, thyristors and triacs by THOMPSON and so on.

In an effort to cover all requirements ELECTRON SA also designs and develops custom-made Architectural Downlights with Xicato and Bridgelux LEDs with capability of selecting CCT, CRI, lumen output, optics, dimming options, emergency option.

The company also manufactures various solutions of Custom Linear LED fittings (recessed, semi recessed, pendant, trimless, inground) which are built according to the specific project requirements mainly with Nichia or CREE LEDs.

ELECTRON SA also designs a wide range of aluminium profiles for concealed lighting, in ground use, step lighting and so on. All components are from leading suppliers with whom ELECTRON has been collaborating for several years now.

Moreover, ELECTRON SA offers a complete set of architectural luminaires for outdoor and indoor use, specializing in LED technology. The LEDELEC LED range includes indoor and outdoor LED luminaires, decorative LEDs, LED modules, LED lamps, and so on. It offers excellent product quality with high technology and aesthetics that cover even the most demanding applications.

Finally, the Architectural Lighting range includes plaster lighting, indoor and outdoor fixtures.

The Entertainment Lighting and Sound Equipment include Moving Heads, Par Cans, Special Effects, Amplifiers, Conference systems, Loudspeakers 100V, and other equipment.



ELECTRON SA is certified with ISO 9001:2008 for the design, development, production and marketing of professional lighting systems.



ELECTRON

ELECTRON SA, PROFESSIONAL LIGHTING SYSTEMS
7 km National Road Athens- Lamia
68, Antiochias Str, N. Philadelphia, 143 41 Athens, Greece

Tel. +30 210 2584240
Fax. +30 210 2584245

info@electron.gr
www.electron.gr



- Any reproduction by means or whole of this prospectus in any way, is prohibited without the written consent and permission of ELECTRON SA
- ELECTRON SA reserves the right to alter specifications and other product information and to discontinue any product contained in this catalogue at any time without prior notice.
- Technical data valid at time of going to press.
- Errors and omissions excepted.
- Specifications and data may change without prior notice.
- Please note that the data included in this catalogue reflect statistical and not necessarily actual figures. Variations may occur in terms of the specifications of LEDs, such as CCT/ CRI/ W/ Dimensions, mainly due to the different production bunches of LEDs.

100% LED Installations

ELECTRON SA is proud to present 100% lighting installations, that have been realized with our products. Indicatively, we mention the following projects:

"OROLOI" retail store, Athens, Greece
Installation of custom LED Downlights, custom linear LED fittings, LED converters & power supplies



"Heel" retail store, Piraeus, Greece
Installation of custom LED Downlights, LED converters



Worldwide Projects & Awards

The products of ELECTRON SA have already been installed around the world in hotels, lounges, restaurants, retail shops, showrooms, galleries, private residences, cruise ships, multipurpose rooms, estate halls, theaters, bars, shopping malls, theaters etc. Some projects have gained international awards. Indicatively, we mention the following projects:

"M Ultra Lounge", Mykonos, Greece
Winner of the International Hotel & Property Awards in London 2012



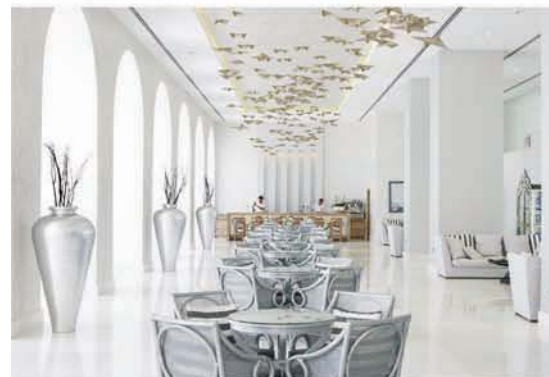
"Lindos Blu Hotel & Suites", Lindos Rhodes, Greece
Gold Medal Winner 2012 and 2011 by TUI Thomson,
Winner of the Travellers' choice 2013, 2012 and 2011 by Tripadvisor



Big Projects & Small Installations

We are eager to offer lighting solutions from a simple and small installation to big and complicated projects. Indicatively, we mention the following project:

Alila Hotel, Rhodes, Greece
Installation of more than 250 custom LED Downlights and more than 1800m linear LED lighting that ELECTRON SA has made according to the specific project requirements



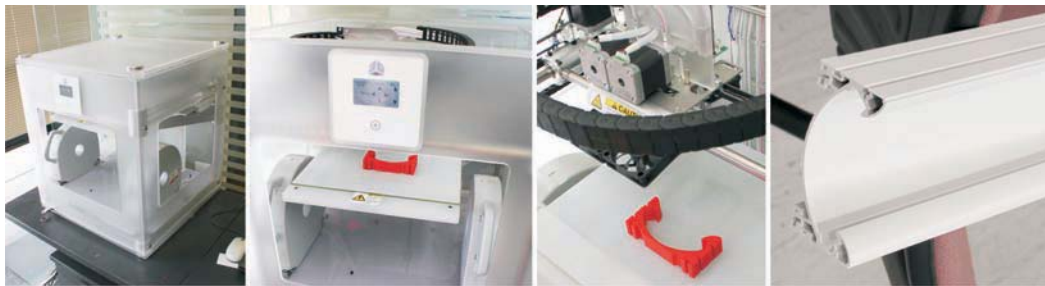
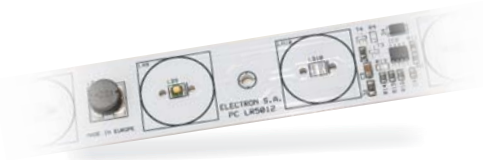
The sales team is eager to suggest the best solutions at the most competitive prices in the market.

The after sales department of the company is always available to our partners for technical information and back up service.

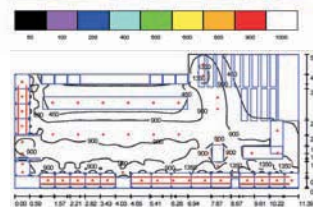
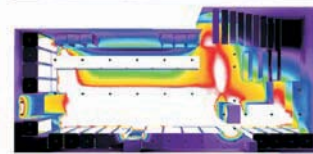
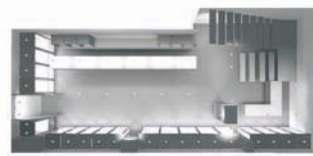
The ELECTRON team



With our 35 year experience and expertise on LED technology and lighting management systems, we are here to design, develop, and manufacture in order to meet your very custom requirements!



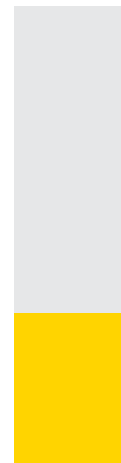
The lighting design team ensures the creation of installations with functionality and good aesthetics.



Contents

[Linear LED Lighting Series >](#)

Multiple Linear LED Lighting Solutions



Linear LED Lighting

Tetra Wash
Tetra Linear
Omega Linear
U Type Linear
Joy Linear
Arc Linear
Arc2 Linear
Stair Due Linear
Artbar Linear
Arttube Linear
Ingra Linear IP65
Ingra Mini Linear IP65
Elecsys Linear IP67
Shallow Linear IP67





Linear LED Lighting
TETRA Wash

TETRA WASH

- Monochromatic:** Management through:
- DMX 512 controllers & converters 0-10V or 1-10V or simple push buttons.
 - Wireless IR & RF control units.
 - DALI Protocol devices.
- Linear LED lighting with CREE LEDs.
- Available in different CCT.
- Available in recessed, trimless, surface, wall adjustable or pendant application.



Model	Luminaire Colour	Colour Temperature	Colour Rendering	Beam Angle	LED wattage / Length	Voltage		
TETRA WASH SURFACE A (TETRA WASH SA)	(AN) Anodized	(27) 2700K	(70) ≥ 70*	(50) 50° x 10°	(03W032) 3W / 32cm	(24) 24VDC		
		(30) 3000K		(45) 45°	(06W032) 6W / 32cm			
		(40) 4000K		(15) 15°	(05W052) 5W / 52cm			
TETRA WASH SURFACE B (TETRA WASH SB)	(WH) White	(30) 3000K	(80) ≥ 80**	(15) 15°	(10W052) 10W / 52cm		(24) 24VDC	
	(BL) Black	(40) 4000K			(12W052) 12W / 52cm			(10W102) 10W / 102cm
		(56) 5600K			(20W102) 20W / 102cm			(24W102) 24W / 102cm
TETRA WASH SURFACE C (TETRA WASH SC)	(BL) Black	(56) 5600K	(80) ≥ 80**	(15) 15°	(15W152) 15W / 152cm			(24) 24VDC
		(30W152) 30W / 152cm			(36W152) 36W / 152cm			
		(20W202) 20W / 202cm			(40W202) 40W / 202cm			
		(40W202) 40W / 202cm			(48W202) 48W / 202cm			
		(20W202) 20W / 202cm						

* 5600K only available in CRI 70
** CRI 80 only for 2700K/3000K/4000K

Create your own linear LED luminaire with any combination of the above options.

Ordering Code Example:

TETRA WASH SC - WH - 30 - 80 - 45 - 20W202 - 24

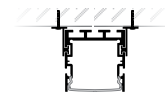
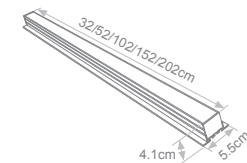
Model Luminaire Colour Colour Rendering LED wattage / Length Colour Temperature Beam Angle Voltage

Available upon request:

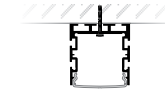
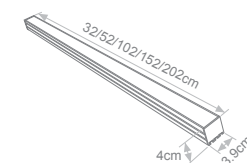
- ✓ Custom dimensions
- ✓ Custom luminaire colours
- ✓ Emergency version



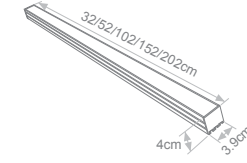
TETRA WASH SURFACE A



TETRA WASH SURFACE B

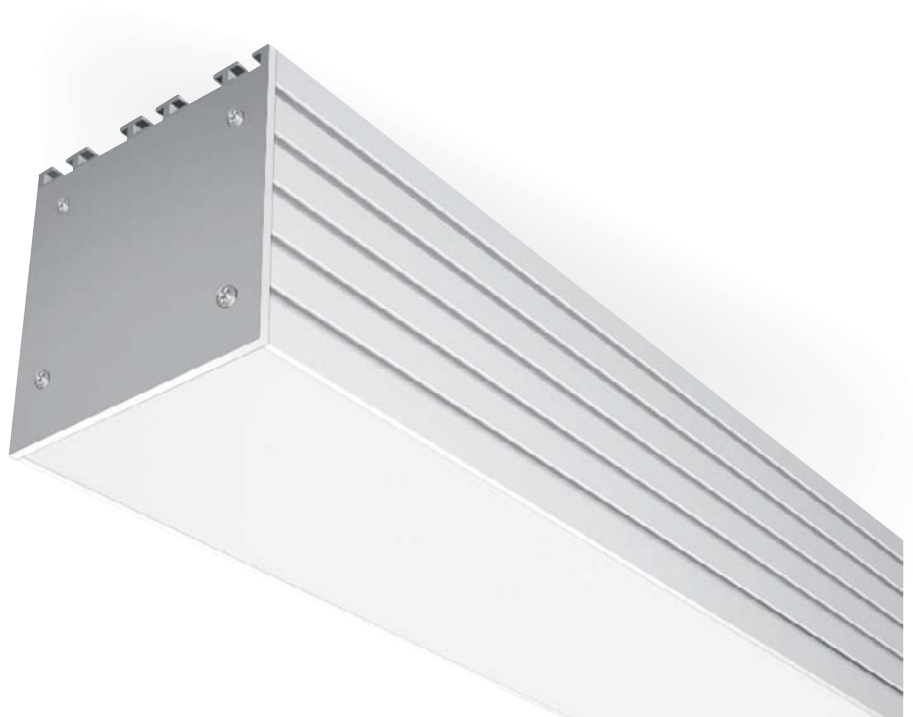


TETRA WASH SURFACE C



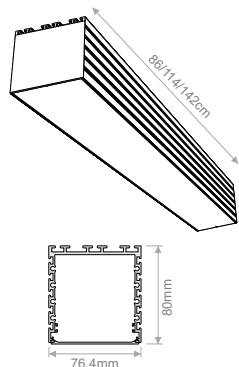
Linear LED Lighting
TETRA Plus Tunable Linear

TETRA PLUS LINEAR TUNABLE



- Linear LED lighting surface, with hinge, recessed, trimless or pendant.
- Linear Tunable White system with adjustable colour temperature from 3,000 to 6,000 K at constant luminous flux.
- Low tolerances for colour temperature (MacAdam 4)
- Lumen maintenance L80/B50 50.000h

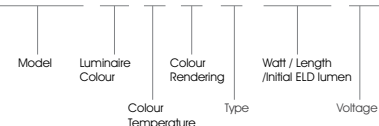
Model	Luminaire Colour	Colour Temperature	CRI	Type	Watt / Length / Initial LED Lumen (no cover)	Voltage
TETRA PLUS TUNABLE SURFACE (TETRA PLUS TS)						
TETRA PLUS TUNABLE SURFACE with HINGE (TETRA PLUS TH)					(20W086) 20W / 86cm / 2100lm (26W114) 26W / 114cm / 2650lm (32W142) 32W / 142cm / 3350lm	(230) 230VAC DALI DIMMABLE
TETRA PLUS TUNABLE RECESSED (TETRA PLUS TR)	(AN) Anodized (WH) White (BL) Black	(AD) 3000-6000K Adjustable	(80) ≥ 80	(TR) Transparent (MS) Milky Satin	(40W086) 40W / 86cm / 4300lm (52W114) 52W / 114cm / 5700lm (62W142) 62W / 142cm / 7150lm	
TETRA PLUS TUNABLE TRIMLESS (TETRA PLUS TT)						
TETRA PLUS TUNABLE PENDANT (TETRA PLUS TP)						



Create your own linear LED luminaire with any combination of the above options.

Ordering Code Example:

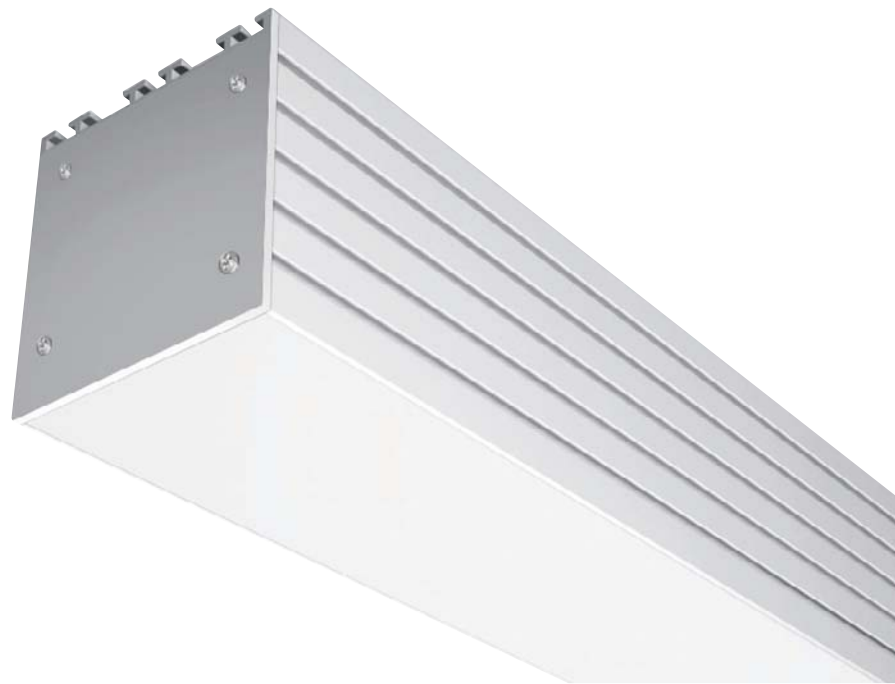
TETRA PLUS TR - AN - AD - 80 - MS - 40W086 - 230



Linear LED Lighting

TETRA Plus

TETRA PLUS



Ra
≥ 80

L70
50.000h

Model	Luminaire Colour	Colour Temperature	Colour Rendering	Type	LED wattage / Length	Voltage
TETRA PLUS RECESSED (TETRA PLUS RC)	(AN) Anodized	(27) 2700K	(80) ≥ 80*	(MS) Milky Satin (TR) Transparent	(35W060) 35.5W / 60cm	(24) 24VDC
	(WH) White	(30) 3000K			(55W091) 55.2W / 91cm	
	(BL) Black	(40) 4000K			(75W122) 75W / 122cm	
		(56) 5600K			(94W154) 94.5W / 154cm	
					(126W204) 126W / 204cm	

* CRI 80 only for 2700K/3000K/4000K

Model	Luminaire Colour	Colour Temperature	Colour Rendering	Type	LED wattage / Length	Voltage
TETRA PLUS TRIMLESS (TETRA PLUS TR)	(AN) Anodized	(27) 2700K	(80) ≥ 80*	(MS) Milky Satin (TR) Transparent	(35W058) 35.5W / 58.4cm	(24) 24VDC
	(WH) White	(30) 3000K			(55W089) 55.2W / 89.4cm	
	(BL) Black	(40) 4000K			(75W120) 75W / 120.4cm	
		(56) 5600K			(94W152) 94.5W / 152.4cm	
					(126W202) 126W / 202cm	

* CRI 80 only for 2700K/3000K/4000K

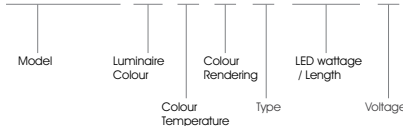
Model	Luminaire Colour	Colour Temperature	Colour Rendering	Type	LED wattage / Length	Voltage
TETRA PLUS SURFACE A (TETRA PLUS SA)	(AN) Anodized (WH) White (BL) Black	(27) 2700K	(80) ≥ 80*	(MS) Milky Satin (TR) Transparent	(35W058) 35.5W / 58.4cm	(24) 24VDC
		(30) 3000K			(55W089) 55.2W / 89.4cm	
		(40) 4000K			(75W120) 75W / 120.4cm	
		(56) 5600K			(94W152) 94.5W / 152.4cm	
					(126W202) 126W / 202cm	

* CRI 80 only for 2700K/3000K/4000K

Create your own linear LED luminaire with any combination of the above options.

Ordering Code Example:

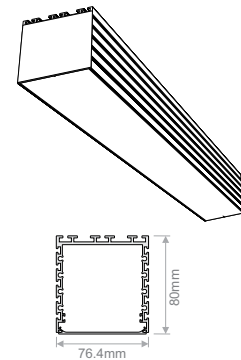
TETRA PLUS SC - WH - 30 - 80 - TR - 94W152 - 24



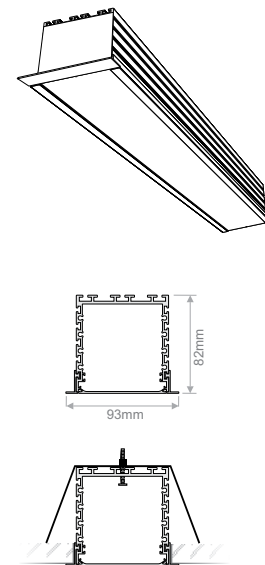
Available upon request:

- ✓ Custom dimensions
- ✓ Custom luminaire colours
- ✓ Emergency version

TETRA PLUS TRIMLESS
PENTAND / SURFACE

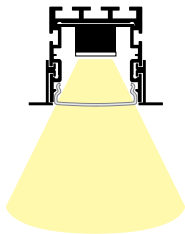
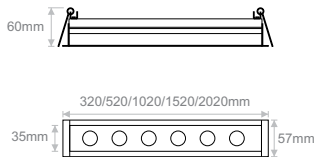
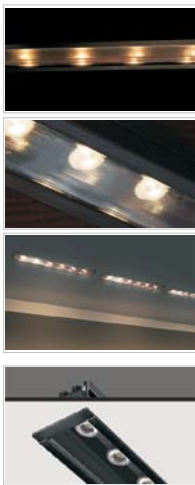


TETRA PLUS RECESSED



Linear LED Lighting
TETRA Wash

TETRA WASH ANTI-GLARE



305x44cm

Lightsources by
CREE

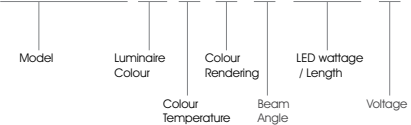
Model	Luminaire Colour	Colour Temperature	Colour Rendering	Beam Angle	LED wattage / Length	Voltage
TETRA WASH ANTI-GLARE (TETRA WASH AG)	[BL] Black	[27] 2700K	[70] ≥ 70 [80] ≥ 80*	[46] 46°	[03W032] 3W / 32cm	[24] 24VDC
		[30] 3000K		[25] 25°	[06W032] 6W / 32cm	
		[40] 4000K		[12] 12°	[05W052] 5W / 52cm	
		[56] 5600K		[10W052] 10W / 52cm		
		[12W052] 12W / 52cm				
		[10W102] 10W / 102cm				
		[20W102] 20W / 102cm				
		[24W102] 24W / 102cm				
		[15W152] 15W / 152cm				
		[30W152] 30W / 152cm				
		[36W152] 36W / 152cm				
		[20W202] 20W / 202cm				
[40W202] 40W / 202cm						
[48W202] 48W / 202cm						

* CRI 80 only for 2700K/3000K/4000K

Create your own TETRA WASH ANTI-GLARE with any combination of the above options.

Ordering Code Example:

TETRA WASH AG - BL - 27 - 80 - 12 - 20W202 - 24



Available upon request:

- ✓ Custom dimensions
- ✓ Custom luminaire colours
- ✓ Emergency version



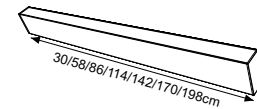
Linear LED Lighting
CANAL Tunable

PALMA LINEAR TUNABLE

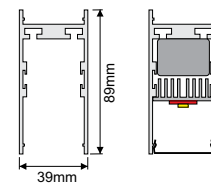
- Surface or Pendant.
- Linear Tunable White system with adjustable colour temperature from 3,000 to 6,000 K at constant luminous flux.
- DALI dimmable upon request.
- Low tolerances for colour temperature (MacAdam 4)
- Lumen maintenance L80/B50 50,000h



Model	Luminaire Colour	Colour Temperature	CRI	Type	Watt / Length / Initial LED Lumen (no cover)	Voltage
PALMA TUNABLE SURFACE (PALMA TS)	[AN] Anodized [WH] White [BL] Black	[AD] 3000-6000K Adjustable	[80] ≥ 80	[TR] Transparent [MS] Milky Satin	[20W086] 20W / 86cm / 2100lm	[230] 230VAC DALI DIMMABLE
					[26W114] 26W / 114cm / 2650lm	
					[32W142] 32W / 142cm / 3350lm	
					[40W086] 40W / 86cm / 4300lm	
PALMA TUNABLE PENDANT (PALMA TP)	[AN] Anodized [WH] White [BL] Black	[AD] 3000-6000K Adjustable	[80] ≥ 80	[TR] Transparent [MS] Milky Satin	[52W114] 52W / 114cm / 5700lm	[230] 230VAC DALI DIMMABLE
					[62W142] 62W / 142cm / 7150lm	
					[62W142] 62W / 142cm / 7150lm	



Model	Luminaire Colour	Colour Temperature*	CRI	Type	Watt / Length / Initial LED Lumen (no cover)	Voltage
PALMA MONOCHROMATIC SURFACE (PALMA MS)	[AN] Anodized [WH] White [BL] Black	3000K 4000K 5000K	[80] ≥ 80	[TR] Transparent [MS] Milky Satin	[15W030] 15.9W / 30cm / 2230lm	[230] 230VAC
					[31W058] 31.8W / 58cm / 4460lm	
					[47W086] 47.7W / 86cm / 6690lm	
					[63W114] 63.6W / 114cm / 8920lm	
PALMA MONOCHROMATIC PENDANT (PALMA MP)	[AN] Anodized [WH] White [BL] Black	3000K 4000K 5000K	[80] ≥ 80	[TR] Transparent [MS] Milky Satin	[79W142] 79.5W / 142cm / 11150lm	[230] 230VAC
					[95W170] 95.4W / 170cm / 13380lm	
					[111W198] 111.3W / 198cm / 15610lm	



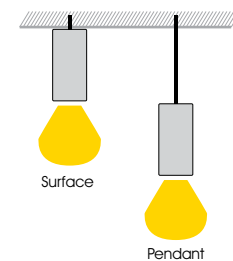
*Available in 6500K upon request.

Create your own linear LED luminaire with any combination of the above options. Ordering Code Example:

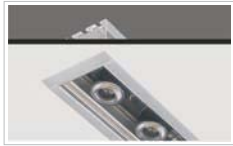
PALMA MP - AN - 30 - 80 - MS - 95W170 - 230

Model Luminaire Colour Colour Rendering Type Watt / Length Voltage

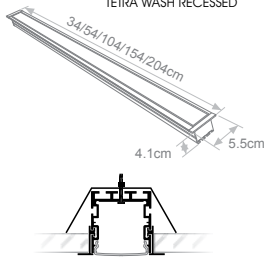
Colour Temperature



TETRA WASH



TETRA WASH RECESSED



- 32.2x4.3cm
- 52.2x4.3cm
- 102.2x4.3cm
- 152.2x4.3cm
- 202.2x4.3cm

Model	Luminaire Colour	Colour Temperature	Colour Rendering	Beam Angle	LED wattage / Length	Voltage
TETRA WASH RECESSED (TETRA WASH RC)	(AN) Anodized	(27) 2700K	(70) ≥ 70*	(50) 50° x 10°	(03W032) 3W / 34cm	(24) 24VDC
		(30) 3000K			(06W032) 6W / 34cm	
		(40) 4000K			(05W052) 5W / 54cm	
	(WH) White	(56) 5600K	(80) ≥ 80**	(15) 15°	(10W052) 10W / 54cm	
					(12W052) 12W / 54cm	
					(10W102) 10W / 104cm	
	(BL) Black				(20W102) 20W / 104cm	
					(24W102) 24W / 104cm	
					(15W152) 15W / 154cm	
					(30W152) 30W / 154cm	
					(36W152) 36W / 154cm	
					(20W202) 20W / 204cm	
				(40W202) 40W / 204cm		
				(48W202) 48W / 204cm		

* 5600K only available in CRI 70
** CRI 80 only for 2700K/3000K/4000K

Model	Luminaire Colour	Colour Temperature	Colour Rendering	Beam Angle	LED wattage / Length	Voltage
TETRA WASH TRIMLESS (TETRA WASH TR)	(AN) Anodized	(27) 2700K	(70) ≥ 70*	(50) 50° x 10°	(03W032) 3W / 32cm	(24) 24VDC
		(30) 3000K			(06W032) 6W / 32cm	
		(40) 4000K			(05W052) 5W / 52cm	
	(WH) White	(56) 5600K	(80) ≥ 80**	(15) 15°	(10W052) 10W / 52cm	
					(12W052) 12W / 52cm	
					(10W102) 10W / 102cm	
	(BL) Black				(20W102) 20W / 102cm	
					(24W102) 24W / 102cm	
					(15W152) 15W / 152cm	
					(30W152) 30W / 152cm	
					(36W152) 36W / 152cm	
					(20W202) 20W / 202cm	
				(40W202) 40W / 202cm		
				(48W202) 48W / 202cm		

* 5600K only available in CRI 70
** CRI 80 only for 2700K/3000K/4000K

Create your own linear LED luminaire with any combination of the above options.

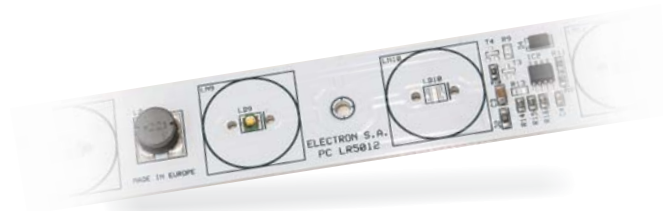
Ordering Code Example:

TETRA WASH TR - BL - 56 - 70 - 15 - 10W102 - 24



Available upon request:

- ✓ Custom dimensions
- ✓ Custom luminaire colours
- ✓ Emergency version



TETRA WASH

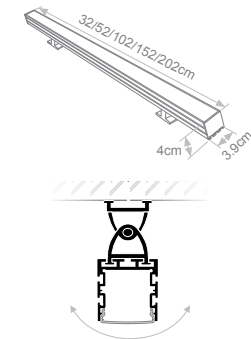


Model	Luminaire Colour	Colour Temperature	Colour Rendering	Beam Angle	LED wattage / Length	Voltage
TETRA WASH WALL ADJUSTABLE (TETRA WASH WA)	(AN) Anodized	(27) 2700K	(70) ≥ 70*	(50) 50° x 10°	(03W032) 3W / 32cm	(24) 24VDC
		(30) 3000K		(45) 45°	(06W032) 6W / 32cm	
		(40) 4000K		(15) 15°	(05W052) 5W / 52cm	
	(WH) White	(56) 5600K	(80) ≥ 80**	(15) 15°	(12W052) 12W / 52cm	
					(10W102) 10W / 102cm	
					(20W102) 20W / 102cm	
	(BL) Black				(24W102) 24W / 102cm	
					(15W152) 15W / 152cm	
					(30W152) 30W / 152cm	
					(36W152) 36W / 152cm	
					(20W202) 20W / 202cm	
					(40W202) 40W / 202cm	
					(48W202) 48W / 202cm	

* 5600K only available in CRI 70
** CRI 80 only for 2700K/3000K/4000K



TETRA WASH SURFACE C

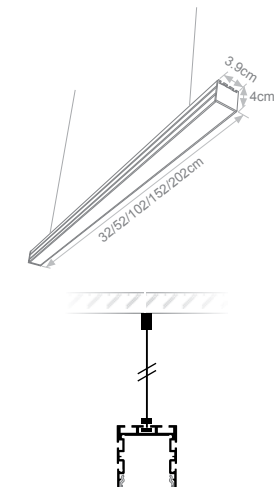


Model	Luminaire Colour	Colour Temperature	Colour Rendering	Beam Angle	LED wattage / Length	Voltage
TETRA WASH PENDANT (TETRA WASH PD)	(AN) Anodized	(27) 2700K	(70) ≥ 70*	(50) 50° x 10°	(03W032) 3W / 32cm	(24) 24VDC
		(30) 3000K		(45) 45°	(06W032) 6W / 32cm	
		(40) 4000K		(15) 15°	(05W052) 5W / 52cm	
	(WH) White	(56) 5600K	(80) ≥ 80**	(15) 15°	(12W052) 12W / 52cm	
					(10W102) 10W / 102cm	
					(20W102) 20W / 102cm	
	(BL) Black				(24W102) 24W / 102cm	
					(15W152) 15W / 152cm	
					(30W152) 30W / 152cm	
					(36W152) 36W / 152cm	
					(20W202) 20W / 202cm	
					(40W202) 40W / 202cm	
					(48W202) 48W / 202cm	

* 5600K only available in CRI 70
** CRI 80 only for 2700K/3000K/4000K



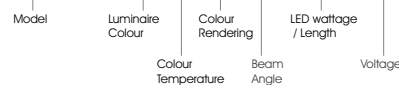
TETRA WASH PENDANT



Create your own linear LED luminaire with any combination of the above options.

Ordering Code Example:

TETRA WASH PD - WH - 27 - 80 - 50 - 30W152 - 24



Available upon request:

- ✓ Custom dimensions
- ✓ Custom luminaire colours
- ✓ Emergency version



Linear LED Lighting
TETRA Linear

**TETRA RECESSED
& TETRA TRIMLESS**



Monochromatic: Management through:

- DMX 512 controllers & converters 0-10V or 1-10V or simple push buttons.
- Wireless IR & RF control units.
- DALI Protocol devices.
- Linear LED lighting with transparent or milky cover.
- Available in recessed or trimless application.
- Available in different CCT to meet all the architectural needs.

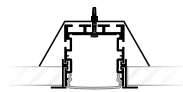
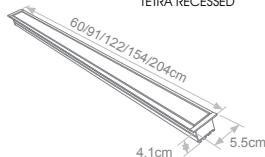


Ra
≥80

L70
50.000h



TETRA RECESSED

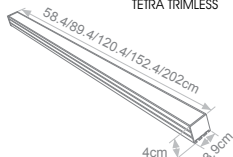


58.2x4.3cm
89.2x4.3cm
120.2x4.3cm
152.2x4.3cm
202.2x4.3cm

Model	Luminaire Colour	Colour Temperature	Colour Rendering	Type	Watt / Length	Voltage
TETRA RECESSED (TETRA RC)	[AN] Anodized [WH] White [BL] Black	[27] 2700K	[80] ≥ 80	[TR] Transparent [MS] Milky Satin	[11W060] 11.8W / 60cm	24VDC [24]
		[30] 3000K			[23W060] 23.6W / 60cm	
		[40] 4000K			[18W091] 18.4W / 91cm	
	[56] 5600K	[36W091] 36.8W / 91cm				
	[25W122] 25W / 122cm					
	[50W122] 50W / 122cm					
	[31W154] 31.5W / 154cm					
	[63W154] 63W / 154cm					
	[42W204] 42W / 204cm					
	[84W204] 84W / 204cm					



TETRA TRIMLESS

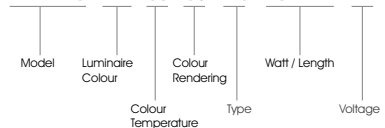


TETRA TRIMLESS (TETRA TR)	[AN] Anodized [WH] White [BL] Black	[27] 2700K	[80] ≥ 80	[TR] Transparent [MS] Milky Satin	[11W058] 11.8W / 58.4cm	24VDC [24]
		[30] 3000K			[23W058] 23.6W / 58.4cm	
		[40] 4000K			[18W089] 18.4W / 89.4cm	
	[56] 5600K	[36W089] 36.8W / 89.4cm				
	[25W120] 25W / 120.4cm					
	[50W120] 50W / 120.4cm					
	[31W152] 31.5W / 152.4cm					
	[63W152] 63W / 152.4cm					
	[42W202] 42W / 202cm					
	[84W202] 84W / 202cm					

Create your own linear LED luminaire with any combination of the above options.

Ordering Code Example:

TETRA RC - WH - 30 - 80 - MS - 25W122 - 24



Available upon request:

- ✓ Custom dimensions
- ✓ Custom luminaire colours
- ✓ Emergency version



Linear LED Lighting
TETRA Linear

TETRA SEMI RECESSED



TETRA SEMI RECESSED

Monochromatic: Management through:

- DMX 512 controllers & converters 0-10V or 1-10V or simple push buttons.
- Wireless IR & RF control units.
- DALI Protocol devices.
- Linear LED lighting with transparent or milky satin cover.
- Available with different CCT to meet all the architectural needs.
- Semi recessed effect.



Ra
≥ 80

L70
50.000h

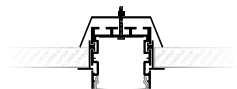
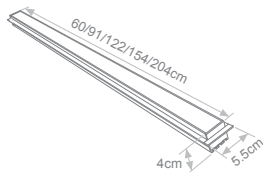
Model	Luminaire Colour	Colour Temperature	Colour Rendering	Type	Watt / Length	Voltage
TETRA SEMI RECESSED (TETRA SR)	(AN) Anodized	(27) 2700K	(80) ≥ 80	(TR) Transparent	(11W060) 11.8W / 60cm	24VDC (24)
		(30) 3000K			(23W060) 23.6W / 60cm	
		(40) 4000K			(18W091) 18.4W / 91cm	
	(WH) White	(56) 5600K			(36W091) 36.8W / 91cm	
		(BL) Black			(25W122) 25W / 122cm	
					(50W122) 50W / 122cm	
	(31W154) 31.5W / 154cm					
	(63W154) 63W / 154cm					
	(42W204) 42W / 204cm					
	(84W204) 84W / 204cm					
(MS) Milky Satin						

Create your own linear LED luminaire with any combination of the above options.

Ordering Code Example:

TETRA SR - AN - 30 - 80 - MS - 25W122 - 24

Model Luminaire Colour Colour Temperature Type Watt / Length Voltage



- 58.2x4.3cm
- 89.2x4.3cm
- 120.2x4.3cm
- 152.2x4.3cm
- 202.2x4.3cm

Available upon request:

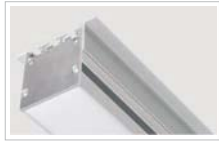
- ✓ Custom dimensions
- ✓ Custom luminaire colours
- ✓ Emergency version



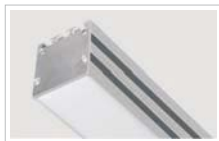
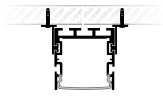
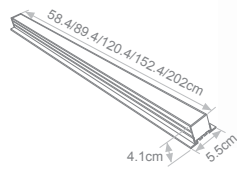
Contents

Linear LED Lighting
TETRA Linear

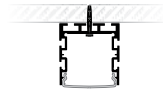
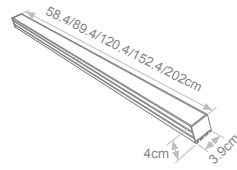
TETRA
SURFACE



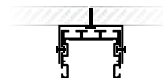
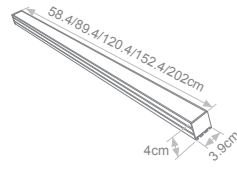
TETRA SURFACE A



TETRA SURFACE B



TETRA SURFACE C



- Monochromatic:** Management through:
- DMX 512 controllers & converters 0-10V or 1-10V or simple push buttons.
 - Wireless IR & RF control units.
 - DALI Protocol devices.
- Linear LED lighting with transparent or milky satin cover.
- Available with different CCT to meet all the architectural needs.
 - Available in two different types.



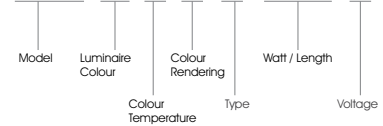
Ra	L70
≥80	50.000h

Model	Luminaire Colour	Colour Temperature	Colour Rendering	Type	Watt / Length	Voltage
TETRA SURFACE A (TETRA SA)	(AN) Anodized	(27) 2700K	(80) ≥ 80	(TR) Transparent (MS) Milky Satin	(11W058) 11.8W / 58.4cm	24VDC (24)
		(30) 3000K			(23W058) 23.6W / 58.4cm	
		(40) 4000K			(18W089) 18.4W / 89.4cm	
TETRA SURFACE B (TETRA SB)	(WH) White (BL) Black	(56) 5600K	(36W089) 36.8W / 89.4cm			
		(25W120) 25W / 120.4cm	(50W120) 50W / 120.4cm			
		(31W152) 31.5W / 152.4cm	(63W152) 63W / 152.4cm			
TETRA SURFACE C (TETRA SC)			(42W202) 42W / 202cm	(84W202) 84W / 202cm		

Create your own linear LED luminaire with any combination of the above options.

Ordering Code Example:

TETRA SB - WH - 30 - 80 - MS - 31W152 - 24



Available upon request:

- ✓ Custom dimensions
- ✓ Custom luminaire colours
- ✓ Emergency version



Linear LED Lighting

TETRA Linear

TETRA PENDANT

- Monochromatic:** Management through:
- DMX 512 controllers & converters 0-10V or 1-10V or simple push buttons.
 - Wireless IR & RF control units.
 - DALI Protocol devices.
- Pendant linear LED with transparent or milky satin cover.
- Available with different CCT to meet all the architectural needs.



Ra
≥80

L70
50.000h

Model	Luminaire Colour	Colour Temperature	Colour Rendering	Type	Watt / Length	Voltage
TETRA PENDANT (TETRA PD)	(AN) Anodized	(27) 2700K	(80) ≥80	(TR) Transparent (MS) Milky Satin	(11W058) 11.8W / 58.4cm	24VDC (24)
		(30) 3000K			(23W058) 23.6W / 58.4cm	
		(40) 4000K			(18W089) 18.4W / 89.4cm	
	(WH) White	(56) 5600K			(36W089) 36.8W / 89.4cm	
		(56) 5600K			(25W120) 25W / 120.4cm	
		(56) 5600K			(50W120) 50W / 120.4cm	
	(BL) Black	(56) 5600K			(31W152) 31.5W / 152.4cm	
		(56) 5600K			(63W152) 63W / 152.4cm	
		(56) 5600K			(42W202) 42W / 202cm	
		(56) 5600K			(84W202) 84W / 202cm	

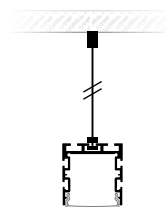
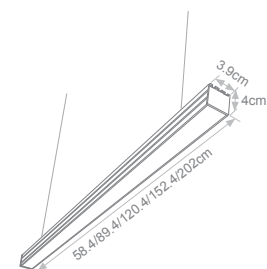
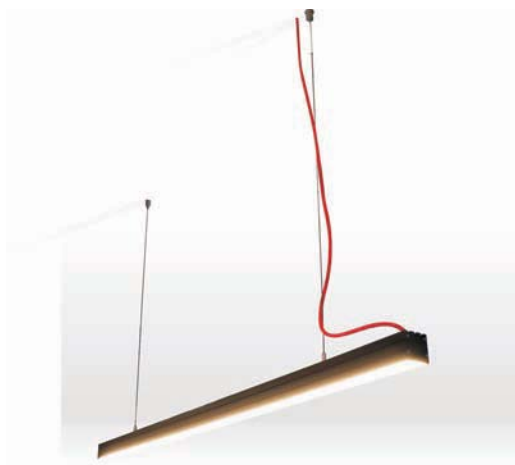


Create your own linear LED luminaire with any combination of the above options.

Ordering Code Example:

TETRA PD - WH - 30 - 80 - MS - 63W152 - 24

Model Luminaire Colour Colour Temperature Colour Rendering Type Watt / Length Voltage



Available upon request:

- ✓ Custom dimensions
- ✓ Custom luminaire colours
- ✓ Emergency version

Contents

fibreLED
LED Lighting Specialists

Linear LED Lighting
OMEGA Linear

OMEGA



Monochromatic: Management through:

- DMX 512 controllers & converters 0-10V or 1-10V or simple push buttons.
- Wireless IR & RF control units.
- DALI Protocol devices.



- Linear LED lighting available with milky, milky satin, ruled or transparent cover.
- Special design and construction to meet the most demanding lighting designs.

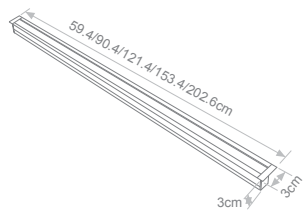
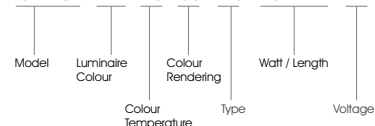
Ra ≥80	L70 50.000h
------------------	-----------------------

Model	Luminaire Colour	Colour Temperature	Colour Rendering	Type	Watt / Length	Voltage
OMEGA (OMEGA)	(AN) Anodized	(27) 2700K	(80) ≥ 80	(ML) Milky	(11W059) 11.8W / 59.4cm	24VDC (24)
		(30) 3000K		(MS) Milky Satin	(18W090) 18.4W / 90.4cm	
		(40) 4000K		(RL) Ruled	(25W121) 25W / 121.4cm	
		(56) 5600K		(TR) Transparent	(31W153) 31.5W / 153.4cm	
					(42W202) 42W / 202.6cm	

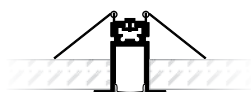
Create your own linear LED luminaire with any combination of the above options.

Ordering Code Example:

OMEGA - AN - 40 - 80 - MS - 25W121 - 24

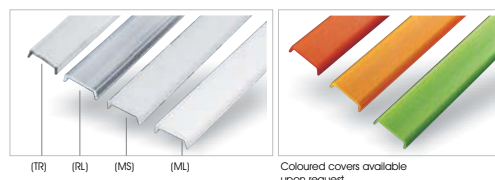


58.5x1.7cm
89.5x1.7cm
120.5x1.7cm
201.7x1.7cm



Available upon request:

- ✓ Custom dimensions
- ✓ Custom luminaire colours
- ✓ Emergency version





[Contents](#)

Linear LED Lighting
U TYPE Linear

U TYPE



Monochromatic: Management through:

- DMX 512 controllers & converters 0-10V or 1-10V or simple push buttons.
- Wireless IR & RF control units.
- DALI Protocol devices.

- Linear LED lighting available with milky, milky satin, ruled or transparent cover.
- Special design and construction to meet the most demanding lighting designs.

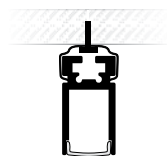
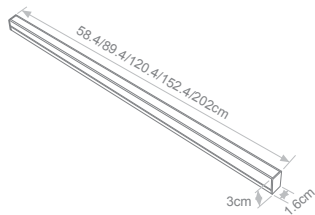
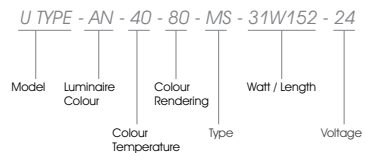


Ra ≥80 L70 50.000h

Model	Luminaire Colour	Colour Temperature	Colour Rendering	Type	Watt / Length	Voltage
U TYPE (U TYPE)	(AN) Anodized	(27) 2700K	(80) ≥ 80	(ML) Milky	(11W058) 11.8W / 58.4cm	24VDC (24)
	(WH) White	(30) 3000K		(MS) Milky Satin	(18W089) 18.4W / 89.4cm	
	(BL) Black	(40) 4000K		(RL) Ruled	(25W120) 25W / 120.4cm	
		(56) 5600K		(TR) Transparent	(31W152) 31.5W / 152.4cm	
				(42W202) 42W / 202cm		

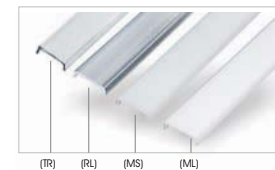
Create your own linear LED luminaire with any combination of the above options.

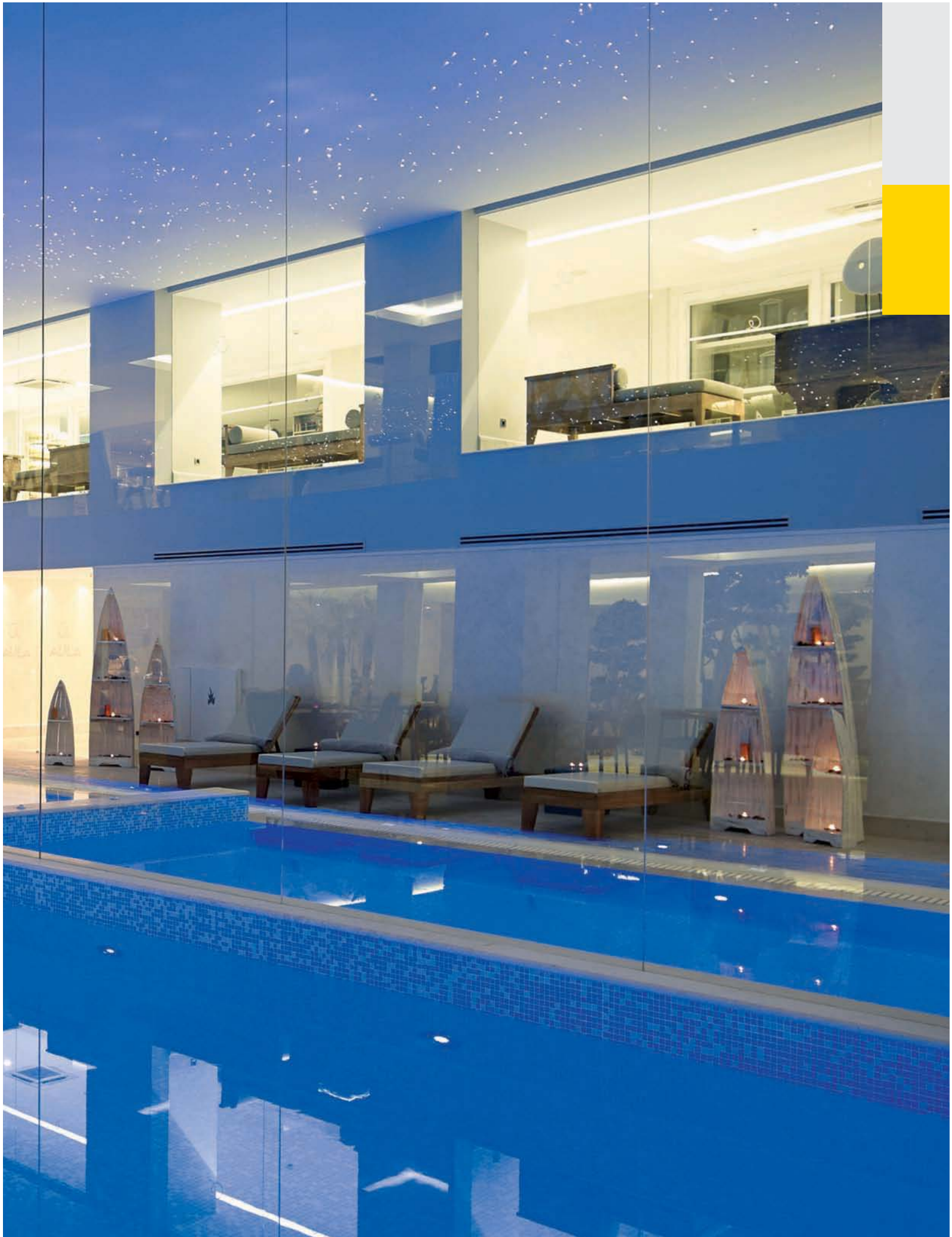
Ordering Code Example:



Available upon request:

- ✓ Custom dimensions
- ✓ Custom luminaire colours
- ✓ Emergency version





Contents

Linear LED Lighting
Joy Linear

JOY SURFACE



Monochromatic: Management through:

- DMX 512 controllers & converters 0-10V or 1-10V or simple push buttons.
- Wireless IR & RF control units.
- DALI Protocol devices.

- Linear LED lighting available with satin square or satin round cover.
- Special design and construction to meet the most demanding lighting designs.



Ra
≥80

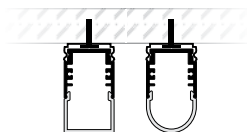
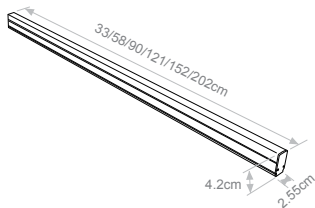
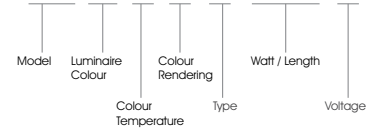
L70
50.000h

Model	Luminaire Colour	Colour Temperature	Colour Rendering	Type	Watt / Length	Voltage
JOY SURFACE (JOY S)	(AN) Anodized (WH) White (BL) Black	(27) 2700K	(80) ≥ 80	(SS) Satin Square (SR) Satin Round	(06W033) 6.6W / 33cm	24VDC (24)
		(30) 3000K			(11W058) 11.8W / 58cm	
		(40) 4000K			(18W090) 18.4W / 90cm	
		(56) 5600K			(25W121) 25W / 121cm	
					(31W152) 31.5W / 152cm	
					(42W202) 42W / 202cm	

Create your own linear LED luminaire with any combination of the above options.

Ordering Code Example:

JOY S - AN - 40 - 80 - MS - 31W152 - 24



Available upon request:

- ✓ Custom dimensions
- ✓ Custom luminaire colours
- ✓ Emergency version

Contents

Linear LED Lighting

Joy Linear

JOY PENDANT



- Monochromatic:** Management through:
- DMX 512 controllers & converters 0-10V or 1-10V or simple push buttons.
 - Wireless IR & RF control units.
 - DALI Protocol devices.
- Pendant linear LED with satin square or satin round cover.
 ■ Available with different CCT to meet all the architectural needs.



Ra
≥80

L70
50.000h

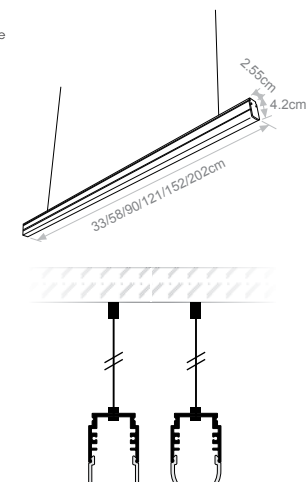
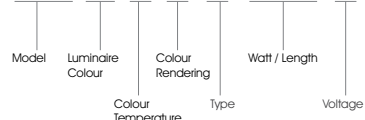


Model	Luminaire Colour	Colour Temperature	Colour Rendering	Type	Watt / Length	Voltage
JOY PENDANT (JOY PD)	(AN) Anodized (WH) White (BL) Black	(27) 2700K	(80) ≥80	(SS) Satin Square (SR) Satin Round	(06W033) 6.6W / 33cm	24VDC (24)
		(30) 3000K			(11W058) 11.8W / 58cm	
		(40) 4000K			(18W090) 18.4W / 90cm	
		(56) 5600K			(25W121) 25W / 121cm	
					(31W152) 31.5W / 152cm	
					(42W202) 42W / 202cm	

Create your own linear LED luminaire with any combination of the above options.

Ordering Code Example:

JOY PD - AN - 40 - 80 - MS - 31W152 - 24



Available upon request:

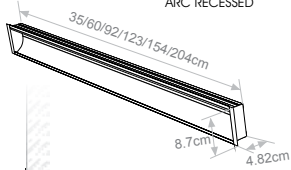
- ✓ Custom dimensions
- ✓ Custom luminaire colours
- ✓ Emergency version

Linear LED Lighting
ARC Linear

ARC RECESSED
& ARC TRIMLESS



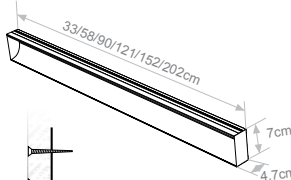
ARC RECESSED



- 33.8x7.4cm
- 58.8x7.4cm
- 90.8x7.4cm
- 121.8x7.4cm
- 152.8x7.4cm
- 202.8x7.4cm



ARC TRIMLESS



- 33.4x7.4cm
- 58.4x7.4cm
- 90.4x7.4cm
- 121.4x7.4cm
- 152.4x7.4cm
- 202.4x7.4cm

- Monochromatic:** Management through:
- DMX 512 controllers & converters 0-10V or 1-10V or simple push buttons.
 - Wireless IR & RF control units.
 - DALI Protocol devices.
- Linear LED lighting with transparent or milky satin cover.
- Available with different CCT to meet all the architectural needs.
- Available for either recessed or trimless installations.



Ra
≥80

L70
50.000h

Model	Luminaire Colour	Colour Temperature	Colour Rendering	Type	Watt / Length	Voltage
ARC RECESSED (ARC RC)	(WH) White	(27) 2700K	(80) ≥80	(ML) Milky	(06W035) 6.6W / 35cm	24VDC (24)
		(30) 3000K		(MS) Milky Satin	(11W060) 11.8W / 60cm	
		(40) 4000K		(RL) Ruled	(18W092) 18.4W / 92cm	
		(56) 5600K		(TR) Transparent	(25W123) 25W / 123cm	
					(31W154) 31.5W / 154cm	
					(42W204) 42W / 204cm	
ARC TRIMLESS (ARC TR)	(WH) White	(27) 2700K	(80) ≥80	(ML) Milky	(06W033) 6.6W / 33cm	24VDC (24)
		(30) 3000K		(MS) Milky Satin	(11W058) 11.8W / 58cm	
		(40) 4000K		(RL) Ruled	(18W090) 18.4W / 90cm	
		(56) 5600K		(TR) Transparent	(25W121) 25W / 121cm	
					(31W152) 31.5W / 152cm	
					(42W202) 42W / 202cm	

Create your own linear LED luminaire with any combination of the above options.

Ordering Code Example:

ARC TR - WH - 40 - 80 - MS - 31W152 - 24

Model Luminaire Colour Colour Rendering Type Watt / Length Voltage

- Available upon request:**
- ✓ Custom dimensions
 - ✓ Custom luminaire colours
 - ✓ Emergency version



Linear LED Lighting
ARC2 Linear

ARC2 RECESSED
& ARC2 TRIMLESS



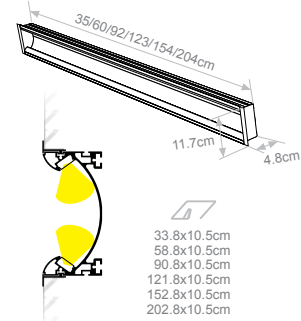
- Monochromatic:** Management through:
- DMX 512 controllers & converters 0-10V or 1-10V or simple push buttons.
 - Wireless IR & RF control units.
 - DALI Protocol devices.
- Linear LED lighting with transparent or milky satin cover.
- Available with different CCT to meet all the architectural needs.
- Available for either recessed or trimless installations.



Ra ≥ 80 L70 50.000h



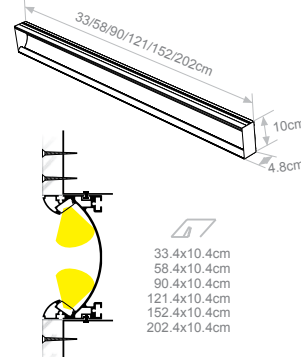
ARC2 RECESSED



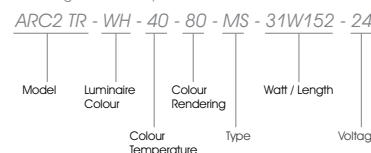
Model	Luminaire Colour	Colour Temperature	Colour Rendering	Type	Watt / Length	Voltage
ARC2 RECESSED (ARC2 RC)	[WH] White	[27] 2700K	[80] ≥ 80	[ML] Milky	[13W035] 13.2W / 35cm	24VDC [24]
		[30] 3000K		[MS] Milky Satin	[23W060] 23.6W / 60cm	
		[40] 4000K		[RL] Ruled	[36W092] 36.8W / 92cm	
		[56] 5600K		[TR] Transparent	[50W123] 50W / 123cm	
					[63W154] 63W / 154cm	
					[84W204] 84W / 204cm	
ARC2 TRIMLESS (ARC2 TR)	[WH] White	[27] 2700K	[80] ≥ 80	[ML] Milky	[13W033] 13.2W / 33cm	24VDC [24]
		[30] 3000K		[MS] Milky Satin	[23W058] 23.6W / 58cm	
		[40] 4000K		[RL] Ruled	[36W090] 36.8W / 90cm	
		[56] 5600K		[TR] Transparent	[50W121] 50W / 121cm	
					[63W152] 63W / 152cm	
					[84W202] 84W / 202cm	



ARC2 TRIMLESS



Create your own linear LED luminaire with any combination of the above options. Ordering Code Example:



Available upon request:

- ✓ Custom dimensions
- ✓ Custom luminaire colours
- ✓ Emergency version

Linear LED Lighting
STAIR DUE Linear

STAIR DUE



Monochromatic: Management through:

- DMX 512 controllers & converters 0-10V or 1-10V or simple push buttons.
- Wireless IR & RF control units.
- DALI Protocol devices.



- Linear LED lighting available with milky, milky satin, ruled or transparent cover.
- Special design and construction to meet the most demanding lighting designs.

Ra
≥80

L70
50.000h

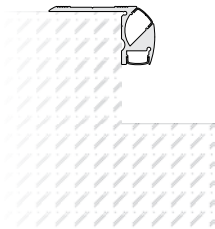
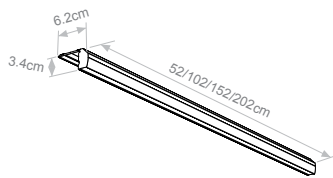
Model	Luminaire Colour	Colour Temperature	Colour Rendering	Type	Watt / Length	Voltage
STAIR DUE (STAIR DUE)	Anodized Black (AB)	(27) 2700K	(80) ≥ 80	(ML) Milky	(21W052) 21W / 52cm	24VDC (24)
		(30) 3000K		(MS) Milky Satin	(42W102) 42W / 102cm	
	Anodized Silver (AS)	(40) 4000K		(RL) Ruled	(63W152) 63W / 152cm	
		(56) 5600K		(TR) Transparent	(84W202) 84W / 202cm	

Create your own linear LED luminaire with any combination of the above options. Ordering Code Example:

STAIR DUE - AN - 40 - 80 - MS - 63W152 - 24

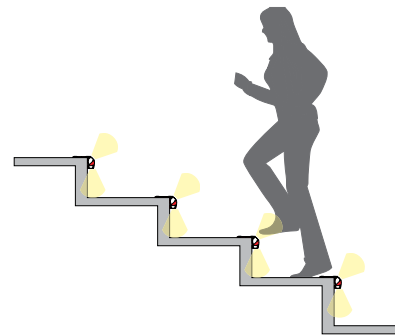
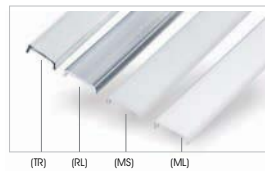
Model Luminaire Colour Colour Rendering Watt / Length Voltage

Colour Temperature Type



IP66 Available upon request

- Available upon request:**
- ✓ Custom dimensions
 - ✓ Custom luminaire colours
 - ✓ Emergency version





Linear LED Lighting
ARTBAR Linear

ARTBAR

Monochromatic: Management through:

- DMX 512 controllers & converters 0-10V or 1-10V or simple push buttons.
- Wireless IR & RF control units.
- DALI Protocol devices.
- Available in 15° & 35°.
- The ARTBAR is ideal for wall washing / concealed lighting / decorative lighting / lighting behind plexiglass.



Ra ≥80 **L70** 50.000h

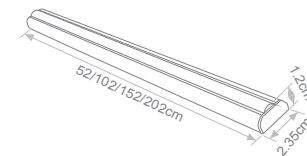
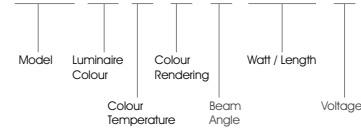


Model	Luminaire Colour	Colour Temperature	Colour Rendering	Beam Angle	Watt / Length	Voltage
ARTBAR (ARTBAR)	(AN) Anodized	(27) 2700K	(80) ≥ 80	(15) 15° (35) 35°	(10W052) 10.5W / 52cm	(24) 24VDC
		(30) 3000K			(21W102) 21W / 102cm	
		(40) 4000K			(31W152) 31.5W / 152cm	
		(56) 5600K			(42W202) 42W / 202cm	

Create your own linear LED luminaire with any combination of the above options.

Ordering Code Example:

ARTBAR - AN - 30 - 80 - 15 - 42W202 - 24



Available upon request:

- ✓ Custom dimensions
- ✓ Custom luminaire colours
- ✓ Emergency version



Contents

Linear LED Lighting
ARTUBE Linear

ARTUBE



Monochromatic: Management through:

- DMX 512 controllers & converters 0-10V or 1-10V or simple push buttons.
- Wireless IR & RF control units.
- DALI Protocol devices.
- The ARTUBE is an elegant series for wall washing applications.
- Available in 15° & 35°.
- Available in monochromatic LEDs.



Ra
≥80

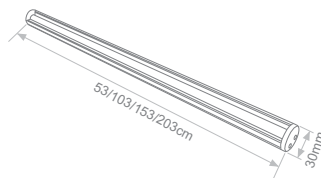
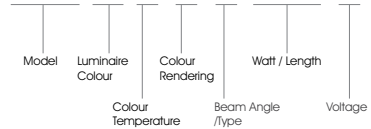
L70
50.000h

Model	Luminaire Colour	Colour Temperature	Colour Rendering	Beam Angle / Type	Watt / Length	Voltage
ARTUBE (ARTUBE)	(AN) Anodized	(27) 2700K	(80) ≥80	(15) 15°	(10W053) 10.5W / 53cm	(24) 24VDC
		(30) 3000K		(35) 35°	(21W103) 21W / 103cm	
		(40) 4000K		(ML) Milky	(31W153) 31.5W / 153cm	
		(56) 5600K		(TR) Transparent	(42W203) 42W / 203cm	

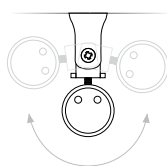
Create your own linear LED luminaire with any combination of the above options.

Ordering Code Example:

ARTUBE - AN - 30 - 80 - 15 - 42W203 - 24



with bracket



Available upon request:

- ✓ Custom dimensions
- ✓ Custom luminaire colours
- ✓ Emergency version

Contents

Linear LED Lighting

ARTUBE Linear

ARTUBE PENDANT



Monochromatic: Management through:

- DMX 512 controllers & converters 0-10V or 1-10V or simple push buttons.
- Wireless IR & RF control units.
- DALI Protocol devices.

- The ARTUBE is an elegant series for pendant applications.
- Available in monochromatic LEDs.



Ra
≥80

L70
50.000h

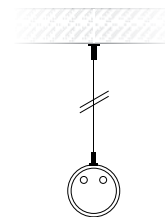
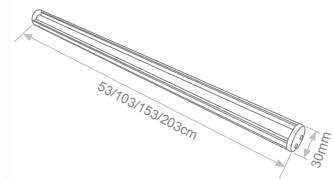
Model	Luminaire Colour	Colour Temperature	Colour Rendering	Beam Angle / Type	Watt / Length	Voltage
ARTUBE PENDANT (ARTUBE PD)	(AN) Anodized	(27) 2700K	(80) ≥ 80	(15) 15°	(10W/053) 10.5W / 53cm	24VDC (24)
	(WH) White	(30) 3000K		(35) 35°	(21W/103) 21W / 103cm	
	(BL) Black	(40) 4000K		(ML) Milky	(31W/153) 31.5W / 153cm	
	(56) 5600K	(TR) Transparent		(42W/203) 42W / 203cm		

Create your own linear LED luminaire with any combination of the above options.

Ordering Code Example:

ARTUBE PD - AN - 40 - 80 - ML - 31W153 - 24

Model Luminaire Colour Colour Rendering Watt / Length
Colour Temperature Beam Angle / Type Voltage

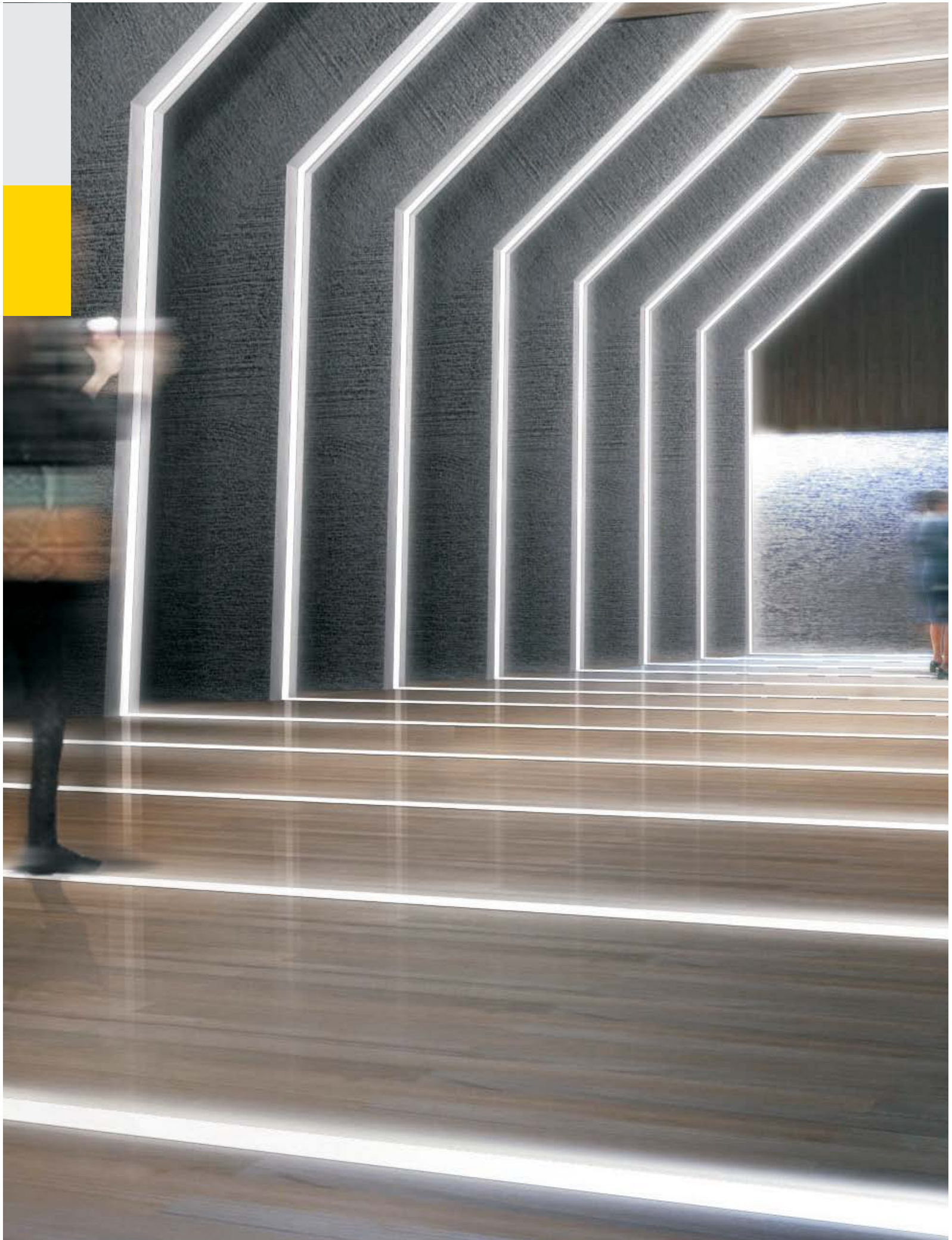


Available upon request:

- ✓ Custom dimensions
- ✓ Custom luminaire colours
- ✓ Emergency version

Contents

fibreLED
LED Lighting Specialists



Contents



Linear LED Lighting

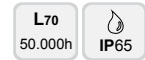
INGRA Linear

INGRA

IP65

Monochromatic: Management through:

- DMX 512 controllers & converters 0-10V or 1-10V or simple push buttons.
- Wireless IR & RF control units.
- DALI Protocol devices.
- INGRA Linear LED ideal for outdoor installations.
- Supplied with single waterproof cable & connector as standard.
- Possibility for in-out cables & connectors upon request as extra.



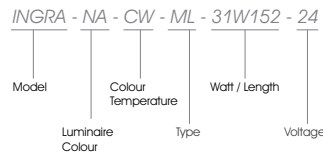
IN-OUT cables & connectors supplied upon request as extra

Model	Luminaire Colour	Colour Temperature	Type	Watt / Length	Voltage
INGRA (INGRA)	Non-Anodized (NA)	(WW) Warm White	(ML) Milky	(02W014) 2.6W / 14cm	24VDC (24)
		(NW) Neutral White		(06W033) 6.6W / 33cm	
		(CW) Cool White		(11W058) 11.8W / 58cm	
		(25W121) 25W / 121cm			
		(31W152) 31.5W / 152cm			
		(42W202) 42W / 202cm			



Create your own linear LED luminaire with any combination of the above options.

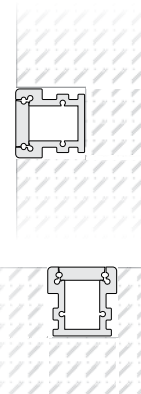
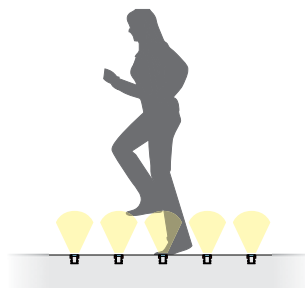
Ordering Code Example:



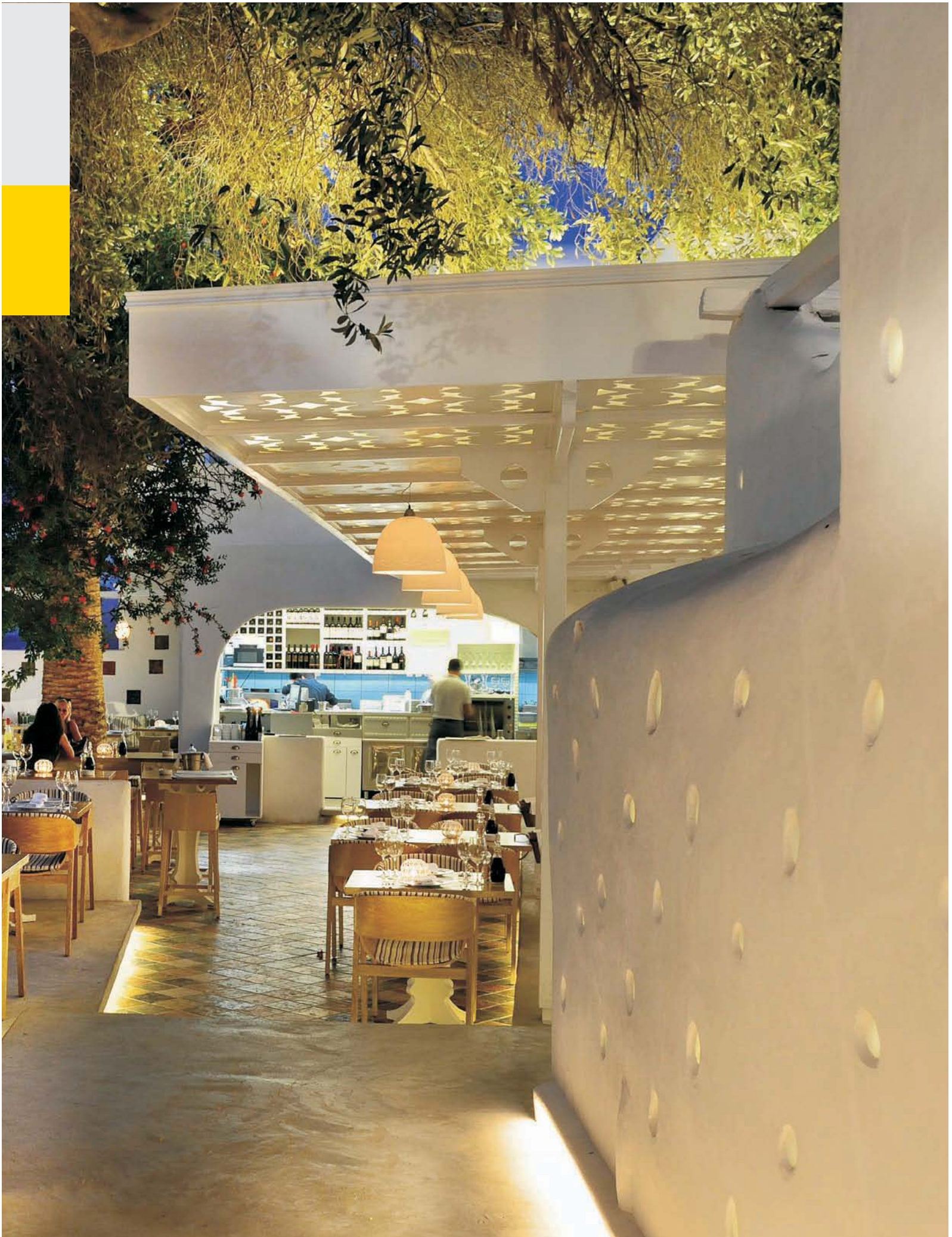
- 14.4x2.7x2.7cm
- 33.4x2.7x2.7cm
- 58.4x2.7x2.7cm
- 90.4x2.7x2.7cm
- 121.4x2.7x2.7cm
- 152.4x2.7x2.7cm
- 202.4x2.7x2.7cm

Available upon request:

- ✓ Custom dimensions
- ✓ Custom luminaire colours
- ✓ Emergency version



Contents



Contents

Linear LED Lighting
INGRA MINI Linear

INGRA MINI

IP65



Monochromatic: Management through:

- DMX 512 controllers & converters 0-10V or 1-10V or simple push buttons.
- Wireless IR & RF control units.
- DALI Protocol devices.
- INGRA MINI Linear LED ideal for outdoor installations.
- Supplied with single waterproof cable & connector as standard.
- Possibility for in-out cables & connectors upon request as extra.

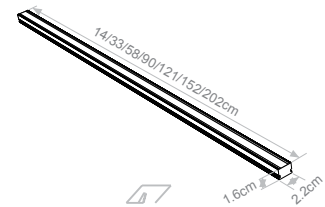
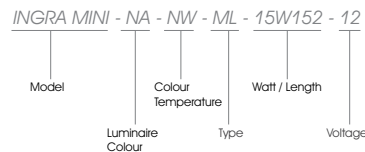


IN-OUT cables & connectors supplied upon request as extra

Model	Luminaire Colour	Colour Temperature	Type	Watt / Length	Voltage
INGRA MINI (INGRA MINI)	Non-Anodized (NA)	(WW) Warm White	(ML) Milky	(01W014) 1.3W / 14cm	12VDC (12)
		(NW) Neutral White		(03W033) 3.3W / 33cm	
		(CW) Cool White		(05W058) 5.9W / 58cm	
		(09W090) 9.2W / 90cm			
		(12W121) 12.5W / 121cm			
		(15W152) 15.8W / 152cm			
		(21W202) 21W / 202cm			

Create your own linear LED luminaire with any combination of the above options.

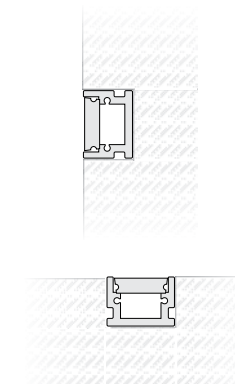
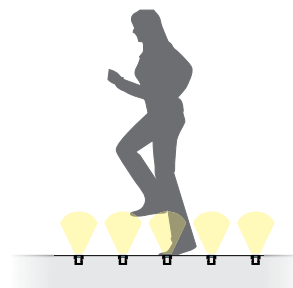
Ordering Code Example:



- 14.4x2.3x1.7cm
- 33.4x2.3x1.7cm
- 58.4x2.3x1.7cm
- 90.4x2.3x1.7cm
- 121.4x2.3x1.7cm
- 152.4x2.3x1.7cm
- 202.4x2.3x1.7cm

Available upon request:

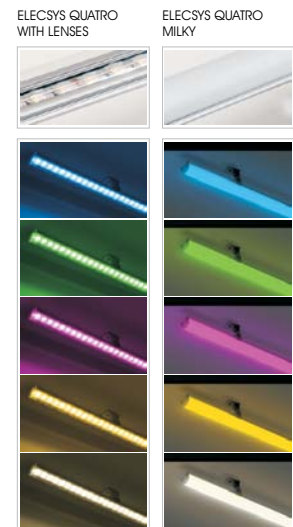
- ✓ Custom dimensions
- ✓ Custom luminaire colours
- ✓ Emergency version



Contents

Linear LED Lighting
ELECSYS QUATRO Linear

ELECSYS QUATRO
RGBW in one chip

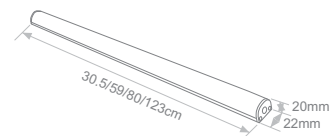
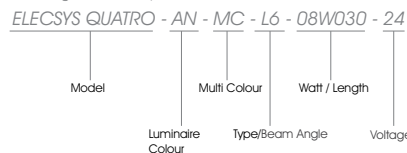


Management through:
■ 4 channels DMX controller with 24VDC PWM output.

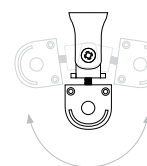
Model	Luminaire Colour	Multi Colour*	Type / Beam Angle	Watt / Length**	Voltage
ELECSYS QUATRO (ELECSYS QUATRO)	(AN) Anodized (WH) White (BL) Black	(MC) RGBW in one chip	(ML) Milky (TR) Transparent (L6) Lens 60° (L4) Lens 45° (L3) Lens 30°	(08W030) 8W / 30.5cm (16W059) 16W / 59cm (21W080) 21W / 80cm (32W123) 32W / 123cm	(24) 24VDC

*Available in monochromatic LEDs upon request.
**Available in custom lengths up to 200cm upon request.

Create your own linear LED luminaire with any combination of the above options. Ordering Code Example:



with bracket



Available upon request:
✓ Custom dimensions
✓ Custom luminaire colours
✓ Emergency version

Linear LED Lighting

ELECSYS Linear

ELECSYS

IP67



Monochromatic: Management through:

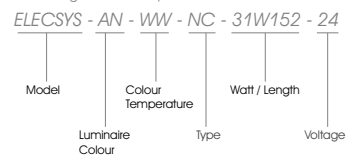
- DMX 512 controllers & converters 0-10V or 1-10V or simple push buttons.
- Wireless IR & RF control units.
- DALI Protocol devices.
- ELECSYS Linear LED ideal for outdoor installations.
- Supplied with single waterproof cable & connector as standard.
- Possibility for in-out cables & connectors upon request as extra.



Model	Luminaire Colour	Colour Temperature	Type	Watt / Length	Voltage
ELECSYS (ELECSYS)	(AN) Anodized	(WW) Warm White	(NC) No Cover	(06W033) 6.6W / 33cm	24VDC (24)
		(NW) Neutral White		(11W058) 11.8W / 58cm	
		(CW) Cool White		(18W090) 18.4W / 90cm	
				(25W121) 25W / 121cm	
				(31W152) 31.5W / 152cm	
				(42W202) 42W / 202cm	

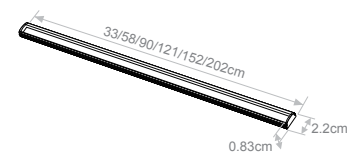
Create your own linear LED luminaire with any combination of the above options.

Ordering Code Example:



Available upon request:

- ✓ Custom dimensions
- ✓ Custom luminaire colours
- ✓ Emergency version



Contents



Contents

Linear LED Lighting
SHALLOW Linear

SHALLOW

IP67



Monochromatic: Management through:

- DMX 512 controllers & converters 0-10V or 1-10V or simple push buttons.
- Wireless IR & RF control units.
- DALI Protocol devices.
- Shallow Linear LED ideal for outdoor installations.
- Supplied with single waterproof cable & connector as standard.
- Possibility for in-out cables & connectors upon request as extra.



L70
50.000h IP67

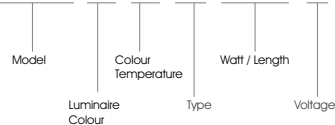


Model	Luminaire Colour	Colour Temperature	Type	Watt / Length	Voltage
SHALLOW (SHALLOW)	(AN) Anodized	(WW) Warm White	(NC) No Cover	(03W033) 3.3W / 33cm	12VDC (12)
		(NW) Neutral White		(05W058) 5.9W / 58cm	
		(CW) Cool White		(09W090) 9.2W / 90cm	
		(12W121) 12.5W / 121cm			
		(15W152) 15.8W / 152cm			
(21W202) 21W / 202cm					

Create your own linear LED luminaire with any combination of the above options.

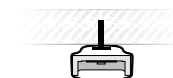
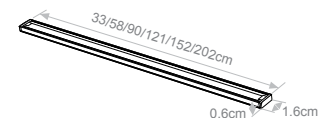
Ordering Code Example:

SHALLOW - AN - CW - NC - 12W121 - 12



Available upon request:

- ✓ Custom dimensions
- ✓ Custom luminaire colours
- ✓ Emergency version



Contents

Linear LED Lighting
MIDI U Linear

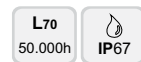
MIDI U

IP67



Monochromatic: Management through:

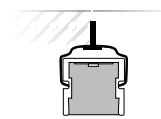
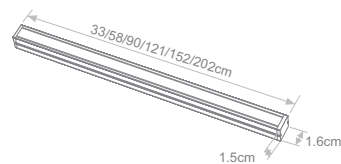
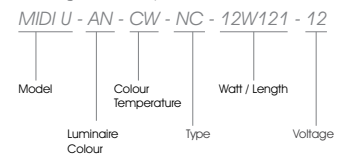
- DMX 512 controllers & converters 0-10V or 1-10V or simple push buttons.
- Wireless IR & RF control units.
- DALI Protocol devices.
- MIDI U Linear LED ideal for outdoor installations.
- Supplied with single waterproof cable & connector as standard.
- Possibility for in-out cables & connectors upon request as extra.



Model	Luminaire Colour	Colour Temperature	Type	Watt / Length	Voltage
MIDI U (MIDI U)	(AN) Anodized	(WW) Warm White (NW) Neutral White (CW) Cool White	(NC) No Cover	(03W033) 3.3W / 33cm	12VDC (12)
				(05W058) 5.9W / 58cm	
				(09W090) 9.2W / 90cm	
				(12W121) 12.5W / 121cm	
				(15W152) 15.8W / 152cm	
				(21W202) 21W / 202cm	

Create your own linear LED luminaire with any combination of the above options.

Ordering Code Example:



Available upon request:

- ✓ Custom dimensions
- ✓ Custom luminaire colours
- ✓ Emergency version

Linear LED Lighting
CANAL Linear

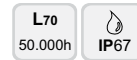
CANAL

IP67



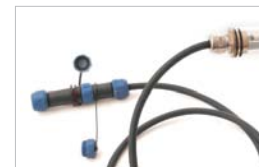
Monochromatic: Management through:

- DMX 512 controllers & converters 0-10V or 1-10V or simple push buttons.
- Wireless IR & RF control units.
- DALI Protocol devices.

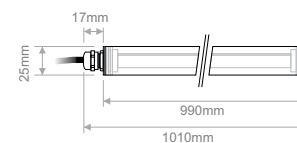


Model*	No.LED	Colour*	Watt	Voltage	Beam Angle	IP
CANAL	45	2700K	9.85W/m	12VDC	120°	IP67
		3000K				
		NEUTRAL WHITE				
		COOL WHITE				

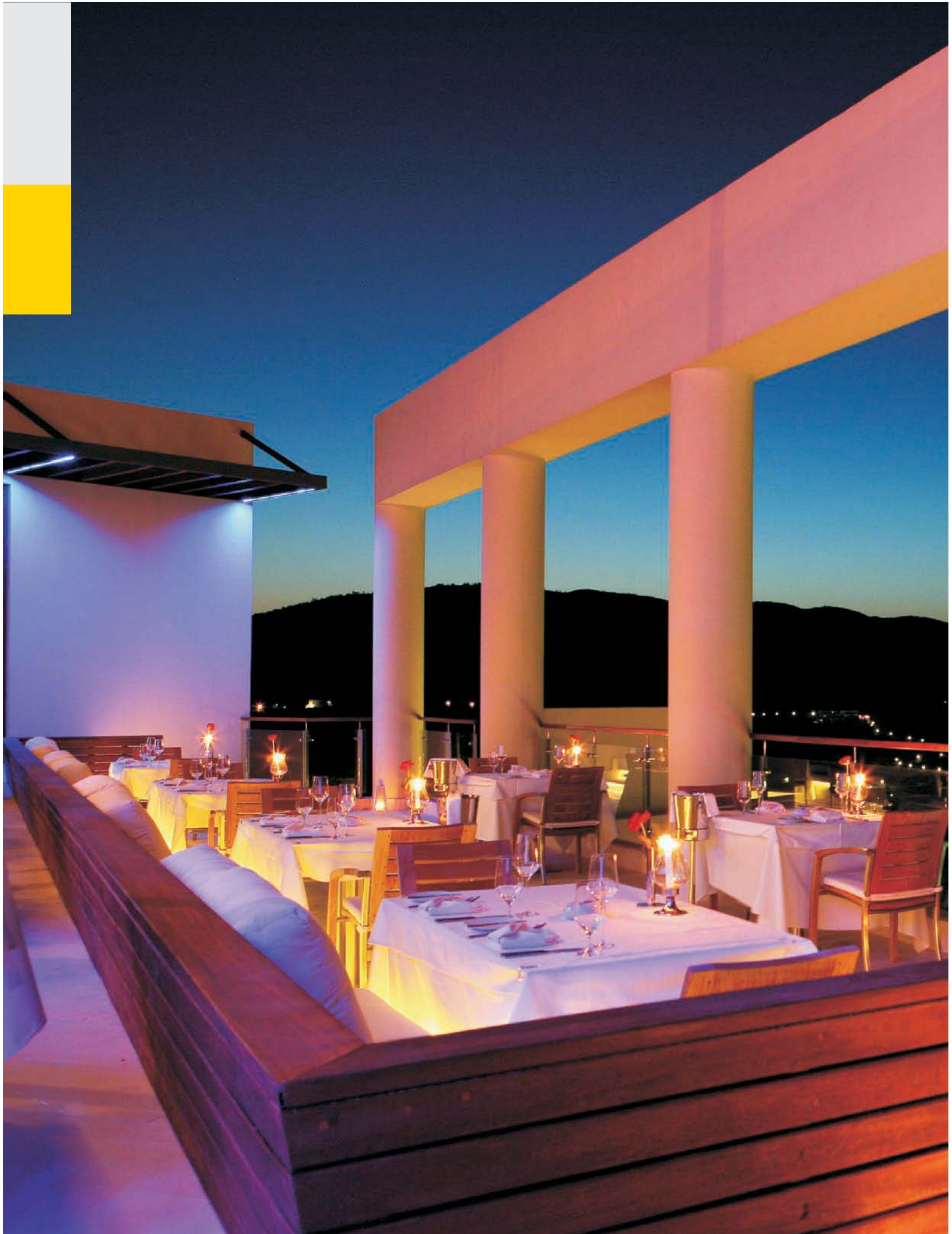
* Available in different lengths upon request.



ACC.085 Inox Holder



Contents



Contents

fibreLED

LED Lighting Specialists

www.fibreled.com

[Contents](#)