

fibreLED

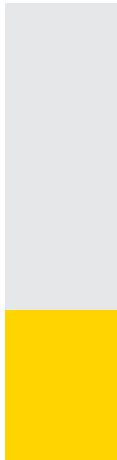
LED Lighting Specialists



LED & ARCHITECTURAL L I G H T I N G

Contents

fibreLED
LED Lighting Specialists



About ELECTRON SA

ELECTRON SA was established in 1978 and since then has been one of the leading manufacturing companies in the commercial lighting field worldwide. The company has been active in the international field for more than twelve years and today exports its products in more than 65 countries worldwide, sealing its dynamic presence by participating in international lighting exhibitions around the world. ELECTRON is located in its 2.800 sq meter building in Athens, Greece.

ELECTRON SA designs, develops and manufactures in Greece Professional Lighting Management Systems, Dimmers, and other Lighting Management Equipment of the latest technology.

ELECTRON is also proud to present the new patent-pending DMR.730 dimmer specially designed for 230V dimmable LEDs that achieves stable output voltage unaffected from mains fluctuations.

In addition, the company presents the new ARLIC and MINI ARLIC architectural lighting control systems for large multi spaces or small installations.

ELECTRON has also launched the Premium Series of wall-mounted multifunctional Controllers, available in different versions to meet individual requirements and specifications: Leading Edge Dimmers, Trailing Edge Dimmers, Relay Switches, HF Fluorescent Controllers, Sine Wave Dimmers, LED Drivers, Dali Drivers.

In addition, ELECTRON designs, develops and manufactures LED power supplies, LED converters, LED boosters, LED controllers, Splitters, Relay packs and other lighting equipment. All products are manufactured with high quality components, such as: MCBs, mains switches, RVD by HAGER, power inlets by MENNEKES-WIELAND-ABL, thyristors and triacs by THOMPSON and so on.

In an effort to cover all requirements ELECTRON SA also designs and develops custom-made Architectural Downlights with Xicato and Bridgelux LEDs with capability of selecting CCT, CRI, lumen output, optics, dimming options, emergency option.

The company also manufactures various solutions of Custom Linear LED fittings (recessed, semi recessed, pendant, trimless, inground) which are built according to the specific project requirements mainly with Nichia or CREE LEDs.

ELECTRON SA also designs a wide range of aluminium profiles for concealed lighting, in ground use, step lighting and so on. All components are from leading suppliers with whom ELECTRON has been collaborating for several years now.

Moreover, ELECTRON SA offers a complete set of architectural luminaires for outdoor and indoor use, specializing in LED technology. The LEDELEC LED range includes indoor and outdoor LED luminaires, decorative LEDs, LED modules, LED lamps, and so on. It offers excellent product quality with high technology and aesthetics that cover even the most demanding applications.

Finally, the Architectural Lighting range includes plaster lighting, indoor and outdoor fixtures.

The Entertainment Lighting and Sound Equipment include Moving Heads, Par Cans, Special Effects, Amplifiers, Conference systems, Loudspeakers 100V, and other equipment.



ELECTRON SA is certified with ISO 9001:2008 for the design, development, production and marketing of professional lighting systems.



ELECTRON

ELECTRON SA, PROFESSIONAL LIGHTING SYSTEMS
7 km National Road Athens- Lamia
68, Antiochias Str, N. Philadelphia, 143 41 Athens, Greece

Tel. +30 210 2584240
Fax. +30 210 2584245

info@electron.gr
www.electron.gr



- Any reproduction by means or whole of this prospectus in any way, is prohibited without the written consent and permission of ELECTRON SA
- ELECTRON SA reserves the right to alter specifications and other product information and to discontinue any product contained in this catalogue at any time without prior notice.
- Technical data valid at time of going to press.
- Errors and omissions excepted.
- Specifications and data may change without prior notice.
- Please note that the data included in this catalogue reflect statistical and not necessarily actual figures. Variations may occur in terms of the specifications of LEDs, such as CCT/ CRI/ W/ Dimensions, mainly due to the different production bunches of LEDs.

100% LED Installations

ELECTRON SA is proud to present 100% lighting installations, that have been realized with our products. Indicatively, we mention the following projects:

"OROLOI" retail store, Athens, Greece
Installation of custom LED Downlights, custom linear LED fittings, LED converters & power supplies



"Heel" retail store, Piraeus, Greece
Installation of custom LED Downlights, LED converters



Worldwide Projects & Awards

The products of ELECTRON SA have already been installed around the world in hotels, lounges, restaurants, retail shops, showrooms, galleries, private residences, cruise ships, multipurpose rooms, estate halls, theaters, bars, shopping malls, theaters etc. Some projects have gained international awards. Indicatively, we mention the following projects:

"M Ultra Lounge", Mykonos, Greece
Winner of the International Hotel & Property Awards in London 2012



"Lindos Blu Hotel & Suites", Lindos Rhodes, Greece
Gold Medal Winner 2012 and 2011 by TUI Thomson,
Winner of the Travellers' choice 2013, 2012 and 2011 by Tripadvisor



Big Projects & Small Installations

We are eager to offer lighting solutions from a simple and small installation to big and complicated projects. Indicatively, we mention the following project:

Alila Hotel, Rhodes, Greece
Installation of more than 250 custom LED Downlights and more than 1800m linear LED lighting that ELECTRON SA has made according to the specific project requirements



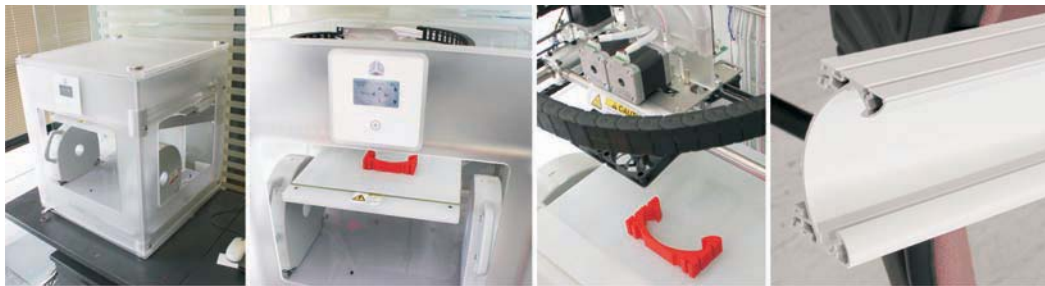
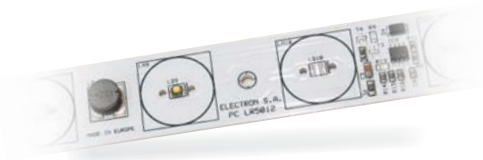
The sales team is eager to suggest the best solutions at the most competitive prices in the market.

The ELECTRON team

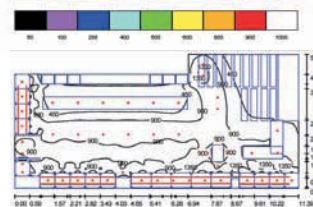
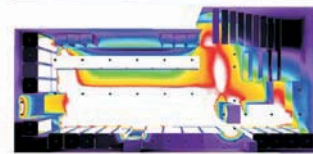
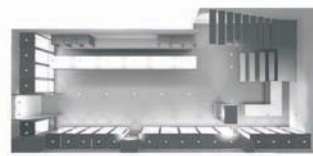
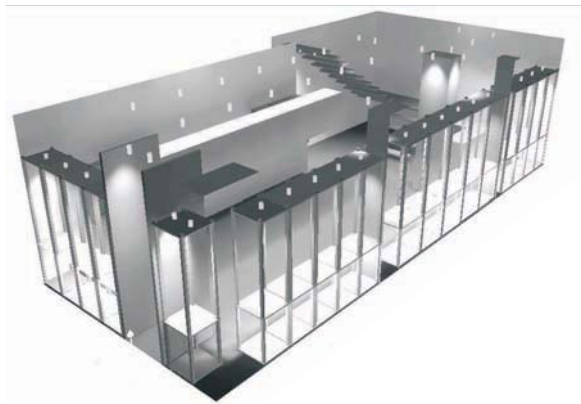
The after sales department of the company is always available to our partners for technical information and back up service.



With our 35 year experience and expertise on LED technology and lighting management systems, we are here to design, develop, and manufacture in order to meet your very custom requirements!



The lighting design team ensures the creation of installations with functionality and good aesthetics.



Contents

[Decorative LEDs >](#)

Decorative LED's



Decoratives LEDs

LED Block
Decorative LED Panels
Round Stars Spots
LED Epigram
LED Balls
LED Tubes

Decorative LEDs

**LED DECORATIVE
BLOCK RGB
(in one chip)**

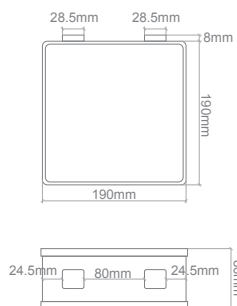


- RGB:** Management through:
- DMX 512 controllers.
 - Wireless IR & RF control units.
 - DALI Protocol devices.
- LED Decorative Blocks Transparent.
- Unique lighting effect that gives depth into the space.



Code*	No.LED	Colour	Watt	Dimensions	Voltage
DEL.001 /CA	30	RGB	7W	190x80x190mm	24VDC

*CA=Common Anode



Contents

Decorative LEDs

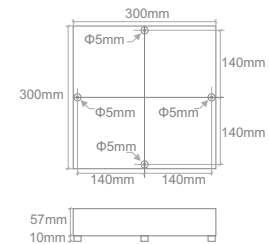
SQUARE LED PANELS RGB



- RGB:** Management through:
- DMX 512 controllers.
 - Wireless IR & RF control units.
 - DALI Protocol devices.
- Ideal for decorative and promotional lighting
- Creates interesting patterns in retail stores, windows, shops, fashions shows etc

Code*	No.LED	Colour	Watt	Dimensions	Voltage
PAN.001 /CC	420 (140per colour)	RGB	25W	300x57x300mm	24VDC

*CC=Common Cathode

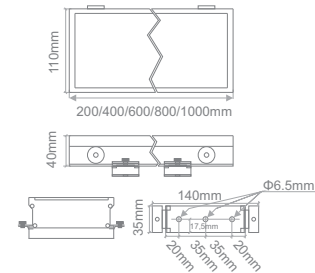


ALUMINIUM LED PANELS RGB

- RGB:** Management through:
- DMX 512 controllers.
 - Wireless IR & RF control units.
 - DALI Protocol devices.
- Decorative LED panels with aluminium base
- Diffuse light due to the milky plaxiglass cover on top of the panel

Code*	No.LED	Colour	Watt	Dimensions	Voltage
TUB.008 /CC	450 (150per colour)	RGB	22W	1000x40X110mm	24VDC
TUB.068 /CC	450 (150per colour)	RGB	17.6W	800x40X110mm	24VDC
TUB.069 /CC	450 (150per colour)	RGB	13.2W	600x40X110mm	24VDC
TUB.070 /CC	450 (150per colour)	RGB	8.8W	400x40X110mm	24VDC
TUB.071 /CC	450 (150per colour)	RGB	4.4W	200x40X110mm	24VDC

*CC=Common Cathode



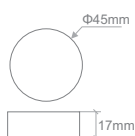
Decorative LEDs

ROUND STAR SPOTS



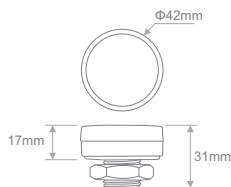
Monochromatic: Management through:

- DMX 512 controllers & converters 0-10V or 1-10V or simple push buttons.
- Wireless IR & RF control units.
- DALI Protocol devices.



Code	No.LED	Colour	Watt	Dimensions	Voltage
ALI.008	4	COOL WHITE	0.3W	Φ45x17mm	12VDC
ALI.009	4	WARM WHITE	0.3W	Φ45x17mm	12VDC
ALI.010	4	GREEN	0.3W	Φ45x17mm	12VDC
ALI.011	4	RED	0.4W	Φ45x17mm	12VDC
ALI.012	4	AMBER	0.4W	Φ45x17mm	12VDC
ALI.013	4	BLUE	0.3W	Φ45x17mm	12VDC

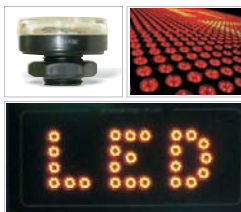
LED EPIGRAM RGB



RGB: Management through:

- DMX 512 controllers.
- Wireless IR & RF control units.
- DALI Protocol devices.

- Ideal to create video wall or advertising board that projects words and geometric elements
- Attracts attention from a distance
- Robust construction



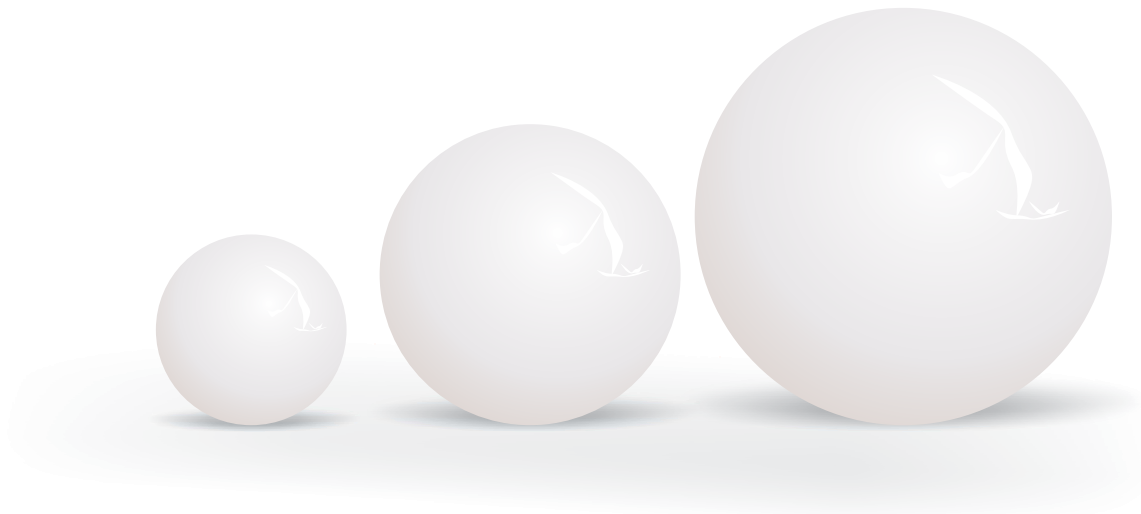
Code*	No.LED	Colour	Watt	Diameter	Voltage
LED.035 /CC	18 (6per colour)	RGB	1.8W	40mm	24VDC

*CC=Common Cathode

Contents

Decorative LEDs

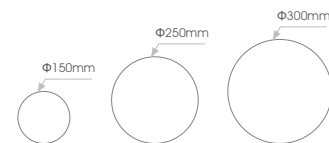
LED BALLS RGB



- RGB:** Management through:
- DMX 512 controllers.
 - Wireless IR & RF control units.
 - DALI Protocol devices.
- Ideal for ambient lighting
 - Impressive decorative elements

Code*	No.LED	Colour	Watt	Diameter/ Height	Voltage
<i>WALL MOUNTED</i>					
BAL.101 /CC	64	RGB	5W	150mm (Φ)	24VDC
BAL.102 /CC	90	RGB	7W	250mm (Φ)	24VDC
BAL.103 /CC	148	RGB	9W	300mm (Φ)	24VDC
<i>PENDANT</i>					
BAL.001 /CC	64	RGB	5W	150mm (Φ)	24VDC
BAL.002 /CC	90	RGB	7W	250mm (Φ)	24VDC
BAL.003 /CC	148	RGB	9W	300mm (Φ)	24VDC
<i>With STAND</i>					
BAL.201 /CC	64	RGB	5W	600mm (h)	24VDC
BAL.202 /CC	90	RGB	7W	600mm (h)	24VDC
BAL.203 /CC	148	RGB	9W	600mm (h)	24VDC
BAL.211 /CC	64	RGB	5W	1140mm (h)	24VDC
BAL.212 /CC	90	RGB	7W	1140mm (h)	24VDC
BAL.213 /CC	148	RGB	9W	1140mm (h)	24VDC
BAL.221 /CC	64	RGB	5W	1680mm (h)	24VDC
BAL.222 /CC	90	RGB	7W	1680mm (h)	24VDC
BAL.223 /CC	148	RGB	9W	1680mm (h)	24VDC

*CC=Common Cathode



fibreLED

LED Lighting Specialists

www.fibreled.com

[Contents](#)