

fibreLED

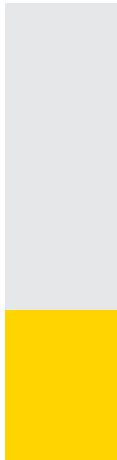
LED Lighting Specialists



LED & ARCHITECTURAL L I G H T I N G

Contents

fibreLED
LED Lighting Specialists



About ELECTRON SA

ELECTRON SA was established in 1978 and since then has been one of the leading manufacturing companies in the commercial lighting field worldwide. The company has been active in the international field for more than twelve years and today exports its products in more than 65 countries worldwide, sealing its dynamic presence by participating in international lighting exhibitions around the world. ELECTRON is located in its 2.800 sq meter building in Athens, Greece.

ELECTRON SA designs, develops and manufactures in Greece Professional Lighting Management Systems, Dimmers, and other Lighting Management Equipment of the latest technology.

ELECTRON is also proud to present the new patent-pending DMR.730 dimmer specially designed for 230V dimmable LEDs that achieves stable output voltage unaffected from mains fluctuations.

In addition, the company presents the new ARLIC and MINI ARLIC architectural lighting control systems for large multi spaces or small installations.

ELECTRON has also launched the Premium Series of wall-mounted multifunctional Controllers, available in different versions to meet individual requirements and specifications: Leading Edge Dimmers, Trailing Edge Dimmers, Relay Switches, HF Fluorescent Controllers, Sine Wave Dimmers, LED Drivers, Dali Drivers.

In addition, ELECTRON designs, develops and manufactures LED power supplies, LED converters, LED boosters, LED controllers, Splitters, Relay packs and other lighting equipment. All products are manufactured with high quality components, such as: MCBs, mains switches, RVD by HAGER, power inlets by MENNEKES-WIELAND-ABL, thyristors and triacs by THOMPSON and so on.

In an effort to cover all requirements ELECTRON SA also designs and develops custom-made Architectural Downlights with Xicato and Bridgelux LEDs with capability of selecting CCT, CRI, lumen output, optics, dimming options, emergency option.

The company also manufactures various solutions of Custom Linear LED fittings (recessed, semi recessed, pendant, trimless, inground) which are built according to the specific project requirements mainly with Nichia or CREE LEDs.

ELECTRON SA also designs a wide range of aluminium profiles for concealed lighting, in ground use, step lighting and so on. All components are from leading suppliers with whom ELECTRON has been collaborating for several years now.

Moreover, ELECTRON SA offers a complete set of architectural luminaires for outdoor and indoor use, specializing in LED technology. The LEDELEC LED range includes indoor and outdoor LED luminaires, decorative LEDs, LED modules, LED lamps, and so on. It offers excellent product quality with high technology and aesthetics that cover even the most demanding applications.

Finally, the Architectural Lighting range includes plaster lighting, indoor and outdoor fixtures.

The Entertainment Lighting and Sound Equipment include Moving Heads, Par Cans, Special Effects, Amplifiers, Conference systems, Loudspeakers 100V, and other equipment.



ELECTRON SA is certified with ISO 9001:2008 for the design, development, production and marketing of professional lighting systems.



ELECTRON SA, PROFESSIONAL LIGHTING SYSTEMS
7 km National Road Athens- Lamia
68, Antiochias Str, N. Philadelphia, 143 41 Athens, Greece

Tel. +30 210 2584240
Fax. +30 210 2584245

info@electron.gr
www.electron.gr



- Any reproduction by means or whole of this prospectus in any way, is prohibited without the written consent and permission of ELECTRON SA
- ELECTRON SA reserves the right to alter specifications and other product information and to discontinue any product contained in this catalogue at any time without prior notice.
- Technical data valid at time of going to press.
- Errors and omissions excepted.
- Specifications and data may change without prior notice.
- Please note that the data included in this catalogue reflect statistical and not necessarily actual figures. Variations may occur in terms of the specifications of LEDs, such as CCT/ CRI/ W/ Dimensions, mainly due to the different production bunches of LEDs.

100% LED Installations

ELECTRON SA is proud to present 100% lighting installations, that have been realized with our products. Indicatively, we mention the following projects:

"OROLOI" retail store, Athens, Greece
Installation of custom LED Downlights, custom linear LED fittings, LED converters & power supplies



"Heel" retail store, Piraeus, Greece
Installation of custom LED Downlights, LED converters



Worldwide Projects & Awards

The products of ELECTRON SA have already been installed around the world in hotels, lounges, restaurants, retail shops, showrooms, galleries, private residences, cruise ships, multipurpose rooms, estate halls, theaters, bars, shopping malls, theaters etc. Some projects have gained international awards. Indicatively, we mention the following projects:

"M Ultra Lounge", Mykonos, Greece
Winner of the International Hotel & Property Awards in London 2012



"Lindos Blu Hotel & Suites", Lindos Rhodes, Greece
Gold Medal Winner 2012 and 2011 by TUI Thomson,
Winner of the Travellers' choice 2013, 2012 and 2011 by Tripadvisor



Big Projects & Small Installations

We are eager to offer lighting solutions from a simple and small installation to big and complicated projects. Indicatively, we mention the following project:

Alila Hotel, Rhodes, Greece
Installation of more than 250 custom LED Downlights and more than 1800m linear LED lighting that ELECTRON SA has made according to the specific project requirements



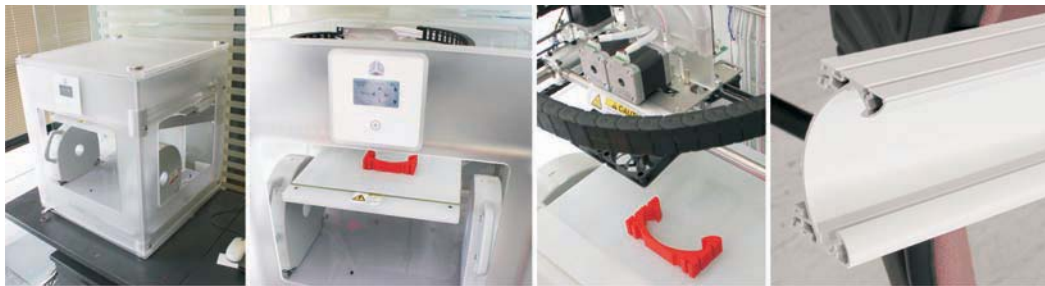
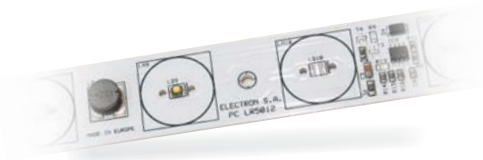
The sales team is eager to suggest the best solutions at the most competitive prices in the market.

The after sales department of the company is always available to our partners for technical information and back up service.

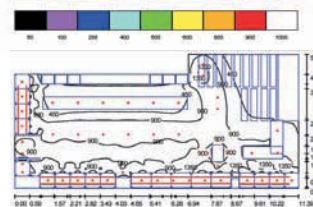
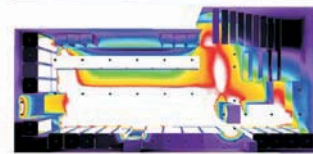
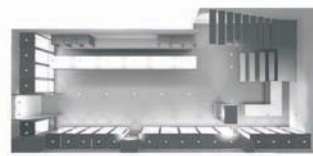
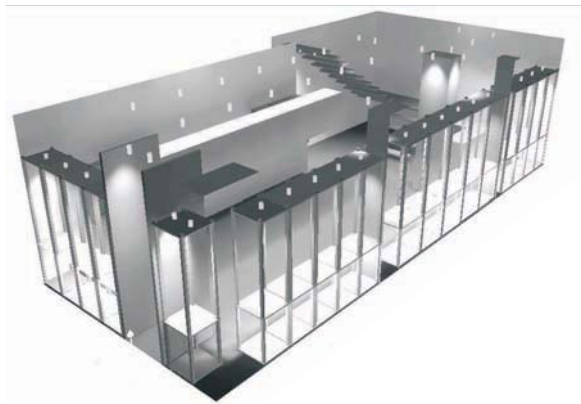
The ELECTRON team



With our 35 year experience and expertise on LED technology and lighting management systems, we are here to design, develop, and manufacture in order to meet your very custom requirements!



The lighting design team ensures the creation of installations with functionality and good aesthetics.



Contents

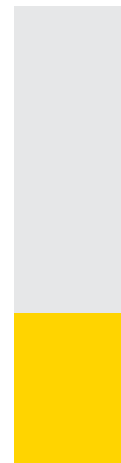
LED >

LED Lamps

LED Panels

LED Modules

LED PCBs



LED Lamps / Panels / Modules / PCBs

LED Lamps

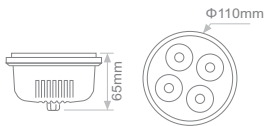
LED Panels

LED Modules

LED PCBs

LED Lamps / Panels /
Modules / PCBs
LED Lamps

NAVI



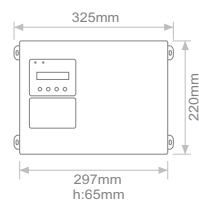
- Dimmable through ELECTRON Constant Current LED drivers and CDS.303.
- Ideal for ambient & decorative lighting.

Code	Description	No.LED	Colour	Lamp Holder	Watt	Constant Current	Diameter*	Beam Angle
ALI.250	NAVI 13.5W	4	RGB	CABLE	13.5W	350mA	110mm	20°

*Cutout for AR111.



3 Channels Constant Current Controller for NAVI



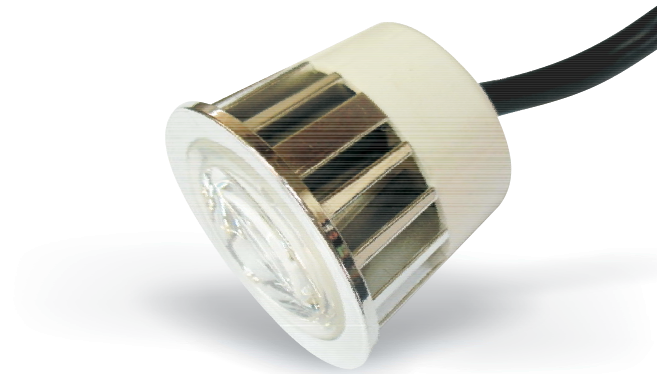
Code	Supply Voltage	Rated Power	Output lines	Output per line	Total Output
<i>Constant Current RGB Controller 350mA for NAVI (ALI.250)</i>					
CDS.303	100-240V 50/60Hz	165W	4 RGB lines	3x12W (36W for each line)	144W (48W per colour)

Contents

LED Lamps / Panels /
Modules / PCBs

LED Lamps

CABLE 5VDC



- RGB/AWB:** Management through:
- DMX 512 controllers.
 - Wireless IR & RF control units.
 - DALI Protocol devices.

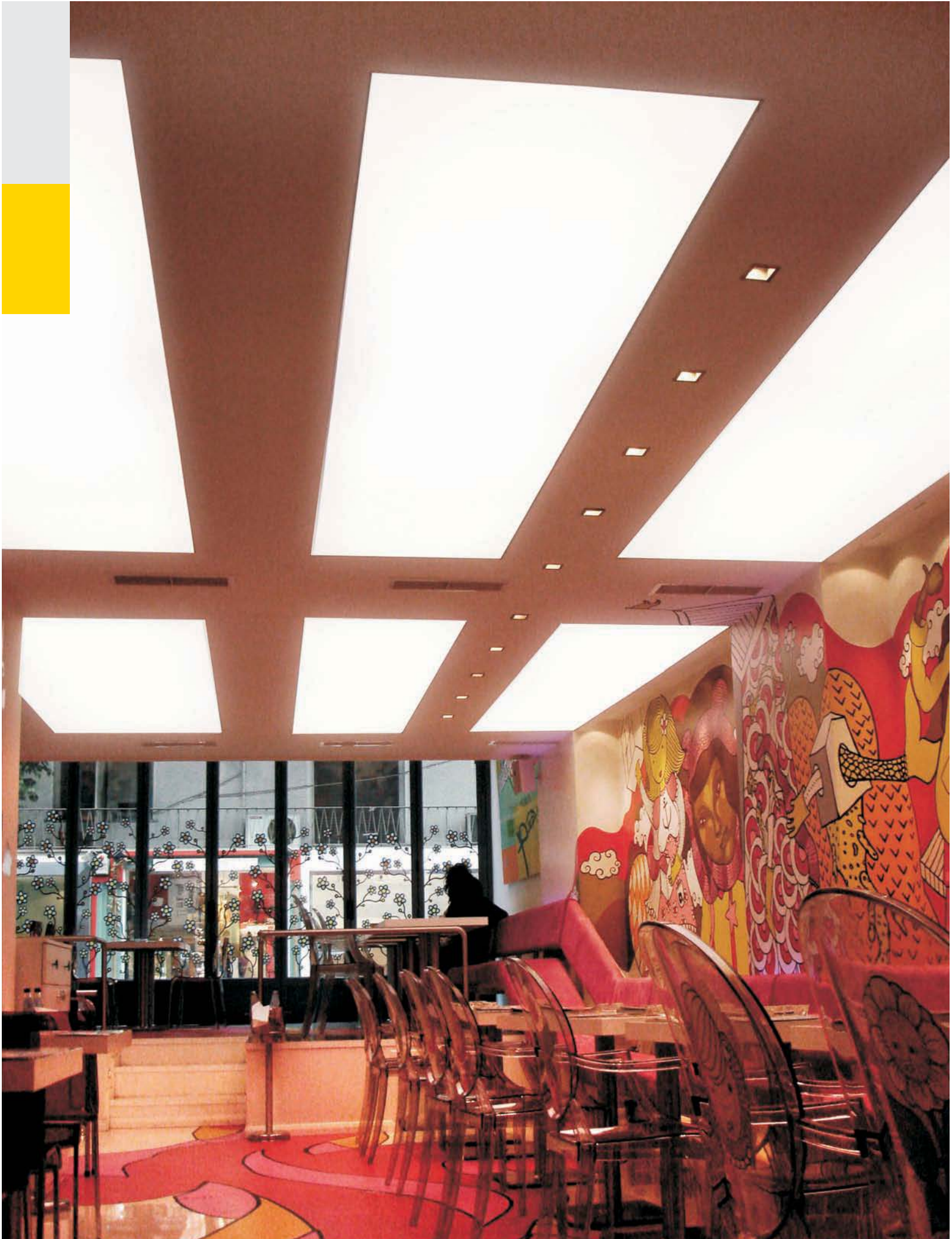
Code	Description	No.LED	Colour*	Lamp Holder	Watt	Voltage	Diameter	Beam Angle**
<i>RGB</i>								
LED.301 /CC	HOMOGENEOUS CABLE 5W	1	RGB	CABLE	5W	5VDC	51mm	45°
<i>RGB 3x1W</i>								
LED.084 /CC	TRILED CABLE 3x1W	3 (1/colour)	RGB	CABLE	3W	5VDC	51mm	25°
LED.085 /CC	TRILED CABLE 3x1W	3 (1/colour)	RGB	CABLE	3W	5VDC	51mm	45°
<i>AWB* 3x1W</i>								
LED.086 /CC	TRILED CABLE 3x1W	3 (1/colour)	AWB	CABLE	3W	5VDC	51mm	25°
LED.087 /CC	TRILED CABLE 3x1W	3 (1/colour)	AWB	CABLE	3W	5VDC	51mm	45°

**Available in 15° upon request.

*A=Amber, W=White, B=Blue
**Available in 15° upon request.







LED Architectural

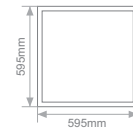
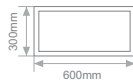
LED PANELS



- Monochromatic:** Management through:
- DMX 512 controllers & converters 0-10V or 1-10V or simple push buttons.
 - Wireless IR & RF control units.
 - DALI Protocol devices.
- Constant Current Dimmable.
- Emergency option upon request.
- Surface or Pendant installation upon request.



Model	No.LED	Colour Temperature	Watt	Lumen	CRI	Dimensios	Current
<i>30x60cm</i>							
PANEL 30X60 (3000K)	100	3000K	37W	2850lm	80+	300x600x41mm	1050mA
PANEL 30X60 (4000K)	100	4000K	37W	2950lm	80+	300x600x41mm	1050mA
PANEL 30X60 (5000K)	100	5000K	37W	3100lm	80+	300x600x41mm	1050mA
PANEL 30X60 (6000K)	100	6000K	37W	3200lm	80+	300x600x41mm	1050mA
<i>60x60cm</i>							
PAN.021 60x60 (2700K)	120	2700K	45W	3500lm	80+	595x595x41mm	1050mA
PAN.022 60x60 (3000K)	120	3000K	45W	3550lm	80+	595x595x41mm	1050mA
PAN.023 60x60 (4000K)	120	4000K	45W	3850lm	80+	595x595x41mm	1050mA
PAN.024 60x60 (5000K)	120	5000K	45W	3900lm	80+	595x595x41mm	1050mA
<i>30x120cm</i>							
PANEL 30X120 (3000K)	140	3000K	52W	4050lm	80+	300x1200x41mm	1050mA
PANEL 30X120 (4000K)	140	4000K	52W	4200lm	80+	300x1200x41mm	1050mA
PANEL 30X120 (5000K)	140	5000K	52W	4400lm	80+	300x1200x41mm	1050mA
PANEL 30X120 (6000K)	140	6000K	52W	4500lm	80+	300x1200x41mm	1050mA
<i>60x120cm</i>							
PANEL 60X120 (3000K)	180	3000K	67W	5200lm	80+	600x1200x41mm	1050mA
PANEL 60X120 (4000K)	180	4000K	67W	5450lm	80+	600x1200x41mm	1050mA
PANEL 60X120 (5000K)	180	5000K	67W	5700lm	80+	600x1200x41mm	1050mA
PANEL 60X120 (6000K)	180	6000K	67W	5800lm	80+	600x1200x41mm	1050mA



fibreLED

LED Lighting Specialists

www.fibreled.com

[Contents](#)