

fibreLED

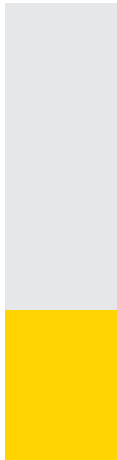
LED Lighting Specialists



LED & ARCHITECTURAL L I G H T I N G

Contents

fibreLED
LED Lighting Specialists



About ELECTRON SA

ELECTRON SA was established in 1978 and since then has been one of the leading manufacturing companies in the commercial lighting field worldwide. The company has been active in the international field for more than twelve years and today exports its products in more than 65 countries worldwide, sealing its dynamic presence by participating in international lighting exhibitions around the world. ELECTRON is located in its 2.800 sq meter building in Athens, Greece.

ELECTRON SA designs, develops and manufactures in Greece Professional Lighting Management Systems, Dimmers, and other Lighting Management Equipment of the latest technology.

ELECTRON is also proud to present the new patent-pending DMR.730 dimmer specially designed for 230V dimmable LEDs that achieves stable output voltage unaffected from mains fluctuations.

In addition, the company presents the new ARLIC and MINI ARLIC architectural lighting control systems for large multi spaces or small installations.

ELECTRON has also launched the Premium Series of wall-mounted multifunctional Controllers, available in different versions to meet individual requirements and specifications: Leading Edge Dimmers, Trailing Edge Dimmers, Relay Switches, HF Fluorescent Controllers, Sine Wave Dimmers, LED Drivers, Dali Drivers.

In addition, ELECTRON designs, develops and manufactures LED power supplies, LED converters, LED boosters, LED controllers, Splitters, Relay packs and other lighting equipment. All products are manufactured with high quality components, such as: MCBs, mains switches, RVD by HAGER, power inlets by MENNEKES-WIELAND-ABL, thyristors and triacs by THOMPSON and so on.

In an effort to cover all requirements ELECTRON SA also designs and develops custom-made Architectural Downlights with Xicato and Bridgelux LEDs with capability of selecting CCT, CRI, lumen output, optics, dimming options, emergency option.

The company also manufactures various solutions of Custom Linear LED fittings (recessed, semi recessed, pendant, trimless, inground) which are built according to the specific project requirements mainly with Nichia or CREE LEDs.

ELECTRON SA also designs a wide range of aluminium profiles for concealed lighting, in ground use, step lighting and so on. All components are from leading suppliers with whom ELECTRON has been collaborating for several years now.

Moreover, ELECTRON SA offers a complete set of architectural luminaires for outdoor and indoor use, specializing in LED technology. The LEDELEC LED range includes indoor and outdoor LED luminaires, decorative LEDs, LED modules, LED lamps, and so on. It offers excellent product quality with high technology and aesthetics that cover even the most demanding applications.

Finally, the Architectural Lighting range includes plaster lighting, indoor and outdoor fixtures.

The Entertainment Lighting and Sound Equipment include Moving Heads, Par Cans, Special Effects, Amplifiers, Conference systems, Loudspeakers 100V, and other equipment.



ELECTRON SA is certified with ISO 9001:2008 for the design, development, production and marketing of professional lighting systems.



ELECTRON

ELECTRON SA, PROFESSIONAL LIGHTING SYSTEMS
7 km National Road Athens- Lamia
68, Antiochias Str, N. Philadelphia, 143 41 Athens, Greece

Tel. +30 210 2584240
Fax. +30 210 2584245

info@electron.gr
www.electron.gr



- Any reproduction by means or whole of this prospectus in any way, is prohibited without the written consent and permission of ELECTRON SA
- ELECTRON SA reserves the right to alter specifications and other product information and to discontinue any product contained in this catalogue at any time without prior notice.
- Technical data valid at time of going to press.
- Errors and omissions excepted.
- Specifications and data may change without prior notice.
- Please note that the data included in this catalogue reflect statistical and not necessarily actual figures. Variations may occur in terms of the specifications of LEDs, such as CCT/ CRI/ W/ Dimensions, mainly due to the different production bunches of LEDs.

100% LED Installations

ELECTRON SA is proud to present 100% lighting installations, that have been realized with our products. Indicatively, we mention the following projects:

"OROLOI" retail store, Athens, Greece
Installation of custom LED Downlights, custom linear LED fittings, LED converters & power supplies



"Heel" retail store, Piraeus, Greece
Installation of custom LED Downlights, LED converters



Worldwide Projects & Awards

The products of ELECTRON SA have already been installed around the world in hotels, lounges, restaurants, retail shops, showrooms, galleries, private residences, cruise ships, multipurpose rooms, estate halls, theaters, bars, shopping malls, theaters etc. Some projects have gained international awards. Indicatively, we mention the following projects:

"M Ultra Lounge", Mykonos, Greece
Winner of the International Hotel & Property Awards in London 2012



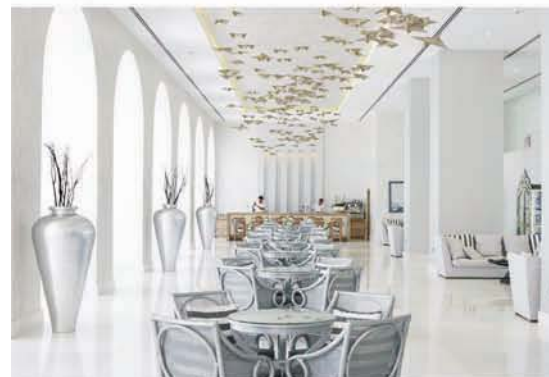
"Lindos Blu Hotel & Suites", Lindos Rhodes, Greece
Gold Medal Winner 2012 and 2011 by TUI Thomson,
Winner of the Travellers' choice 2013, 2012 and 2011 by Tripadvisor



Big Projects & Small Installations

We are eager to offer lighting solutions from a simple and small installation to big and complicated projects. Indicatively, we mention the following project:

Alila Hotel, Rhodes, Greece
Installation of more than 250 custom LED Downlights and more than 1800m linear LED lighting that ELECTRON SA has made according to the specific project requirements



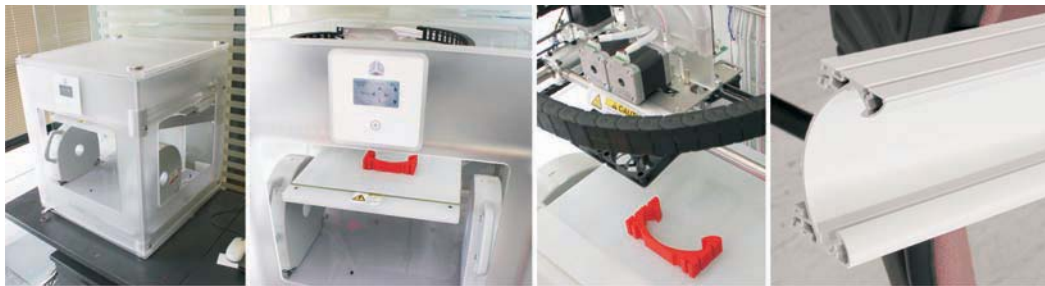
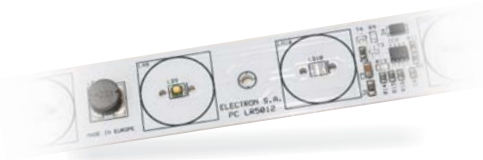
The sales team is eager to suggest the best solutions at the most competitive prices in the market.

The ELECTRON team

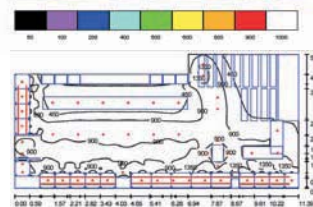
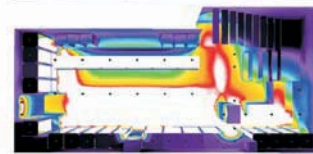
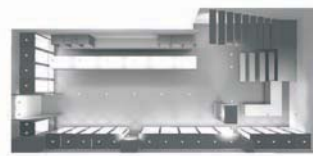
The after sales department of the company is always available to our partners for technical information and back up service.



With our 35 year experience and expertise on LED technology and lighting management systems, we are here to design, develop, and manufacture in order to meet your very custom requirements!



The lighting design team ensures the creation of installations with functionality and good aesthetics.



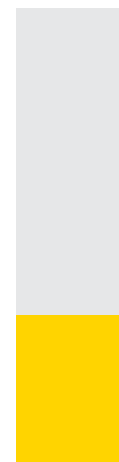
Contents

[LED Downlights >](#)

LED Downlights Lightsource by Xicato

LED Downlights Lightsource by Bridgelux

LED Tracklights



LED Downlights

LED Downlights lightsource by XICATO

LED Downlights lightsource by BRIDGELUX

LED Track Lights lightsource by BRIDGELUX

LED Downlights
LED Downlights
lightsource by XICATO

XSM & XLM SERIES

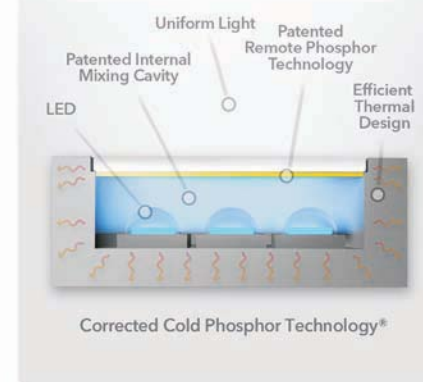
Custom-Made LED Downlight Series with Xicato LED Module:

LIGHTSOURCE BY
XICATO

ELECTRON SA offers depending on the user requirements Downlights with any module of the Standard Series, the Artist Series and the new Vibrant Series of the XSM modules, as well as the Standard and Artist Series of the XLM modules.

| | | | | |
|--|--|--|--|---|
|  |  |  |  |  |
| Standard Series XSM | Artist Series XSM | Vibrant Series XSM | Standard Series XLM | Artist Series XLM |
| <ul style="list-style-type: none"> ✓ High Quality Light ✓ Accurate Color ✓ Superior Color Consistency ✓ All Applications | <ul style="list-style-type: none"> ✓ High Quality Light ✓ Natural Color ✓ Superior Color Consistency ✓ Museums | <ul style="list-style-type: none"> ✓ Enhanced Light ✓ Striking Color ✓ Superior Color Consistency ✓ Retail | <ul style="list-style-type: none"> ✓ High Quality Light ✓ Accurate Color ✓ Superior Color Consistency ✓ All Applications | <ul style="list-style-type: none"> ✓ High Quality Light ✓ Natural Color ✓ Superior Color Consistency ✓ Retail |

Xicato Approach



The Xicato LED Module uses the innovative Corrected Cold Phosphor Technology® that addresses both issues of wavelength variation and heat. Xicato, first "tunes" the module in the manufacturing process to achieve Xicato's exacting standards for initial color. Second it provides a thermal cooling path to ensure that the LEDs and the separated phosphor stay cool throughout the entire life of the module. Heat degrades phosphor and results in poor uniformity and variable color shift. By keeping the phosphor cool, Xicato can ensure that color consistency is maintained over the life of the module.

Xicato evaluates all 15 reference samples for its 80 Series and Artist Series modules — providing a complete understanding of CRI with respect to quality of light. In the case of the Artist Series modules, the results for the deep red R9 and other samples put these modules on par with halogen lamps.

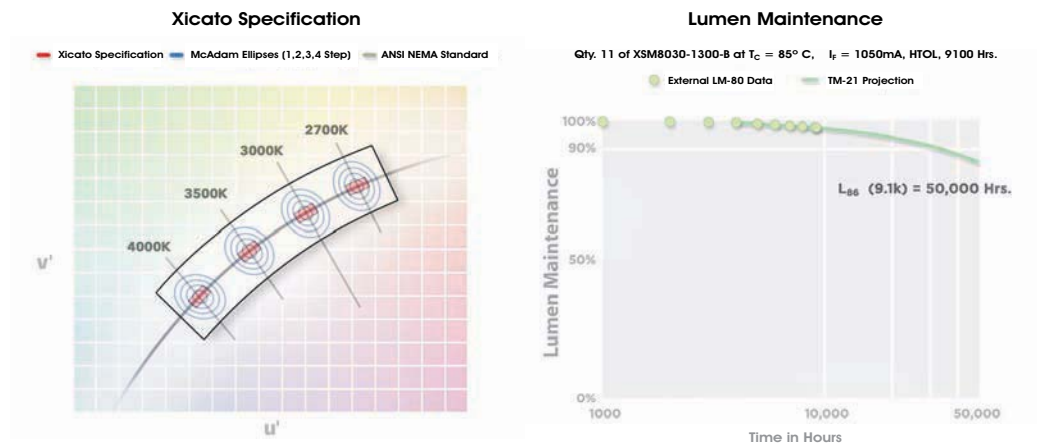
| | Ra | R1 | R2 | R3 | R4 | R5 | R6 | R7 | R8 | R9 | R10 | R11 | R12 | R13 | R14 | R15 |
|---|----|----|----|----|----|----|----|----|----|----|-----|-----|-----|-----|-----|-----|
| XSM 80 Series | 81 | 80 | 85 | 89 | 81 | 78 | 80 | 86 | 66 | 16 | 64 | 79 | 58 | 81 | 93 | 75 |
| XSM Artist Series | 98 | 98 | 99 | 98 | 98 | 98 | 97 | 98 | 98 | 96 | 99 | 98 | 88 | 98 | 98 | 98 |
| Typical IR coated Halogen Dichroic | 98 | 98 | 99 | 99 | 99 | 98 | 98 | 99 | 97 | 92 | 97 | 98 | 97 | 98 | 99 | 97 |
| Typical Compact Metal Halide | 82 | 90 | 94 | 69 | 82 | 81 | 81 | 87 | 71 | 27 | 59 | 62 | 55 | 93 | 78 | 88 |
| Typical Compact Fluorescent | 87 | 91 | 93 | 86 | 91 | 89 | 90 | 88 | 70 | 17 | 76 | 91 | 81 | 93 | 92 | 81 |

LED Downlights
LED Downlights
lightsource by XICATO

XSM & XLM SERIES

Xicato also offers a very tight colour consistency within 1 x 2 MacAdam Ellipses around the color point on the black body locus

Using the IESNA's standards LM-80 and TM21, Xicato has tested and extrapolated that Xicato modules will still produce over 80 percent of their original light output after 50,000 hours of use.

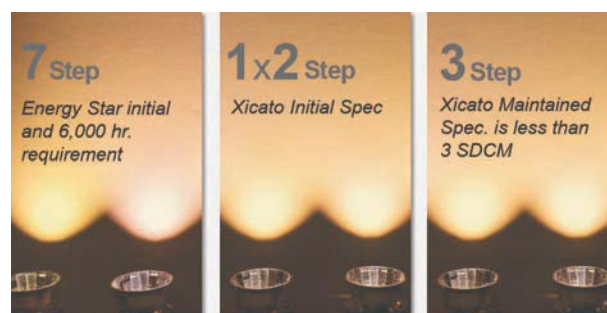


ELECTRON SA designs, develops and manufactures a variety of LED Downlights with the Xicato LED Module according to your requirements.



- Model of luminaire: Kronos, Altra, Vita, Libra, Zeta, Zeta Mini, Vero, Ivy, Kapa, Nio, Hello, Pandora, Hektor, Galino, Jupiter, Galaxy.
- Selection amongst the Standard Series XSM, Artist Series XSM, Vibrant Series XSM, Standard Series XLM, Artist Series XLM.
- Thermally Validated Luminaires.
- 5 year color consistency and lumen maintenance warranty.
<http://www.xicato.com/technology/color-consistency#color-consistency-warranty>
- Lumen Output (lm): 400lm, 700lm, 1000lm, 1300lm, 2000lm, 3000lm.
- Lumen efficacy of up to 96lm/W.
- L80B50 (lumen maintenance based on LM-80 and Tm21).
- Long lifetime of 50K.
- Correlated Colour Temperature (CCT): 2700K, 3000K, 3500K, 4000K, and the new 3000K of the Vibrant Series.
- Colour Render Index (CRI): from >80 to >95.
- Very tight colour consistency within 1 x 2 MacAdam Ellipses. Along BBL. CCT +/-50K, Duv +/-0.001.
- Enhanced optical control with beam angles of emitted light from 14° to diffuse.
- Fixed or Adjustable Operation of luminaires.
- Colour of fitting: white, black, grey, nickel, nickel mat, nickel satin, brush nickel, gold, gold mat, aluminium.
- Dimming Options: analogue 0-10V, analogue 1-10V, DMX, DALI, non dimmable, or even without driver.
- Emergency Option.
- IP66 LED Modules.

Basis for the "3" as in .003 $\Delta u', v'$
< 3 is recognized to be "just noticeably different"



Contents

LED Downlights

LED Downlights
lightsource by XICATO

XSM & XLM SERIES



| Module Family | CRI (Ra) | Drive Current (mA) | Luminous Flux (lm) | Wattage (W) | Efficacy (lm/W) | Color Temp. (K) | | | | Life (Hrs.) |
|---------------|----------|--------------------|--------------------|-------------|-----------------|-----------------|------|------|------|-------------|
| | | | | | | 2700 | 3000 | 3500 | 4000 | |
| XSM 400lm | ≥80 | 350 | 220 | 2.8 | 80 | ✓ | ✓ | N/A | ✓ | 50K |
| | | 500 | 300 | 4.1 | 74 | ✓ | ✓ | N/A | ✓ | |
| | | 700 | 400 | 5.7 | 70 | ✓ | ✓ | N/A | ✓ | |
| XSM 700lm | ≥80 | 350 | 280 | 2.9 | 95 | ✓ | ✓ | N/A | ✓ | 50K |
| | | 500 | 380 | 4.3 | 88 | ✓ | ✓ | N/A | ✓ | |
| | | 700 | 500 | 6.2 | 81 | ✓ | ✓ | N/A | ✓ | |
| | | 1050 | 700 | 9.7 | 72 | ✓ | ✓ | N/A | ✓ | |
| XSM 1000lm | ≥80 | 350 | 380 | 4 | 96 | ✓ | ✓ | ✓ | ✓ | 50K |
| | | 500 | 540 | 5.8 | 93 | ✓ | ✓ | ✓ | ✓ | |
| | | 700 | 720 | 8.3 | 87 | ✓ | ✓ | ✓ | ✓ | |
| | | 1050 | 1000 | 13 | 77 | ✓ | ✓ | ✓ | ✓ | |
| XSM 1300lm | ≥80 | 350 | 500 | 5.4 | 92 | ✓ | ✓ | ✓ | ✓ | 50K |
| | | 500 | 700 | 7.9 | 89 | ✓ | ✓ | ✓ | ✓ | |
| | | 700 | 930 | 11.3 | 82 | ✓ | ✓ | ✓ | ✓ | |
| | | 1050 | 1300 | 17.8 | 73 | ✓ | ✓ | ✓ | ✓ | |
| XSM 2000lm | ≥80 | 350 | 780 | 8.8 | 88 | ✓ | ✓ | ✓ | ✓ | 50K |
| | | 500 | 1070 | 12.9 | 83 | ✓ | ✓ | ✓ | ✓ | |
| | | 700 | 1420 | 18.5 | 77 | ✓ | ✓ | ✓ | ✓ | |
| | | 1050 | 2000 | 28.8 | 70 | ✓ | ✓ | ✓ | ✓ | |
| XSM 3000lm | ≥80 | 350 | 1210 | 13.8 | 88 | ✓ | ✓ | ✓ | ✓ | 50K |
| | | 500 | 1660 | 20.2 | 82 | ✓ | ✓ | ✓ | ✓ | |
| | | 700 | 2220 | 29 | 77 | ✓ | ✓ | ✓ | ✓ | |
| | | 1050 | 3000 | 45 | 67 | ✓ | ✓ | ✓ | ✓ | |



| Module Family | CRI (Ra) | Drive Current (mA) | Luminous Flux (lm) | Wattage (W) | Efficacy (lm/W) | Color Temp. (K) | | | | Life (Hrs.) |
|---------------|----------|--------------------|--------------------|-------------|-----------------|-----------------|------|------|------|-------------|
| | | | | | | 2700 | 3000 | 3500 | 4000 | |
| XSM 700lm | ≥95 | 350 | 400 | 6.8 | 59 | ✓ | ✓ | N/A | ✓ | 50K |
| | | 500 | 550 | 9.4 | 59 | ✓ | ✓ | N/A | ✓ | |
| | | 700 | 700 | 13.4 | 52 | ✓ | ✓ | N/A | ✓ | |
| XSM 1000lm | ≥95 | 350 | 380 | 6.5 | 59 | ✓ | ✓ | ✓ | ✓ | 50K |
| | | 500 | 540 | 9.4 | 57 | ✓ | ✓ | ✓ | ✓ | |
| | | 700 | 720 | 13.4 | 54 | ✓ | ✓ | ✓ | ✓ | |
| | | 1050 | 1000 | 21.5 | 46 | ✓ | ✓ | ✓ | ✓ | |
| XSM 1300lm | ≥95 | 350 | 500 | 8.5 | 59 | ✓ | ✓ | ✓ | ✓ | 50K |
| | | 500 | 700 | 12.4 | 57 | ✓ | ✓ | ✓ | ✓ | |
| | | 700 | 930 | 17.8 | 52 | ✓ | ✓ | ✓ | ✓ | |
| | | 1050 | 1300 | 27.7 | 47 | ✓ | ✓ | ✓ | ✓ | |
| XSM 2000lm | ≥95 | 350 | 780 | 13.2 | 59 | ✓ | ✓ | ✓ | ✓ | 50K |
| | | 500 | 1070 | 19.2 | 56 | ✓ | ✓ | ✓ | ✓ | |
| | | 700 | 1420 | 27.7 | 51 | ✓ | ✓ | ✓ | ✓ | |
| | | 1050 | 2000 | 43.2 | 46 | ✓ | ✓ | ✓ | ✓ | |



| Module Family | CRI (Ra) | Drive Current (mA) | Luminous Flux (lm) | Wattage (W) | Efficacy (lm/W) | Color Temp. (K) | | | | Life (Hrs.) |
|---------------|----------|--------------------|--------------------|-------------|-----------------|-----------------|------|------|------|-------------|
| | | | | | | 2700 | 3000 | 3500 | 4000 | |
| XSM 1300lm | ≥80 | 350 | 500 | 5.4 | 93 | N/A | ✓ | N/A | N/A | 50K |
| | | 500 | 700 | 7.9 | 89 | N/A | ✓ | N/A | N/A | |
| | | 700 | 930 | 11.3 | 82 | N/A | ✓ | N/A | N/A | |
| | | 1050 | 1300 | 17.7 | 73 | N/A | ✓ | N/A | N/A | |
| XSM 2000lm | ≥80 | 350 | 780 | 8.9 | 88 | N/A | ✓ | N/A | N/A | 50K |
| | | 500 | 1070 | 12.9 | 83 | N/A | ✓ | N/A | N/A | |
| | | 700 | 1420 | 18.6 | 77 | N/A | ✓ | N/A | N/A | |
| | | 1050 | 2000 | 28.8 | 70 | N/A | ✓ | N/A | N/A | |
| XSM 3000lm | ≥80 | 350 | 1210 | 13.8 | 88 | N/A | ✓ | N/A | N/A | 50K |
| | | 500 | 1660 | 20.2 | 82 | N/A | ✓ | N/A | N/A | |
| | | 700 | 2220 | 29 | 77 | N/A | ✓ | N/A | N/A | |
| | | 1050 | 3000 | 45 | 67 | N/A | ✓ | N/A | N/A | |



| Module Family | CRI (Ra) | Drive Current (mA) | Luminous Flux (lm) | Wattage (W) | Efficacy (lm/W) | Color Temp. (K) | | | | Life (Hrs.) |
|---------------|----------|--------------------|--------------------|-------------|-----------------|-----------------|------|------|------|-------------|
| | | | | | | 2700 | 3000 | 3500 | 4000 | |
| XLM 3000lm | ≥80 | 350 | 1170 | 12.6 | 93 | ✓ | ✓ | ✓ | ✓ | 50K |
| | | 500 | 1665 | 18.4 | 90 | ✓ | ✓ | ✓ | ✓ | |
| | | 700 | 2160 | 26.5 | 81 | ✓ | ✓ | ✓ | ✓ | |
| | | 1050 | 3000 | 41.4 | 73 | ✓ | ✓ | ✓ | ✓ | |
| XLM 4000lm | ≥80 | 350 | 1550 | 18 | 86 | ✓ | ✓ | ✓ | ✓ | 50K |
| | | 500 | 2145 | 26.3 | 82 | ✓ | ✓ | ✓ | ✓ | |
| | | 700 | 2880 | 37.9 | 76 | ✓ | ✓ | ✓ | ✓ | |
| | | 1050 | 4000 | 59.1 | 68 | ✓ | ✓ | ✓ | ✓ | |

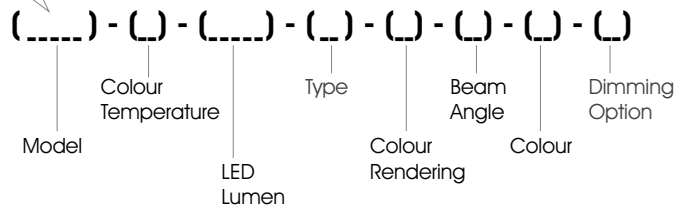


| Module Family | CRI (Ra) | Drive Current (mA) | Luminous Flux (lm) | Wattage (W) | Efficacy (lm/W) | Color Temp. (K) | | | | Life (Hrs.) |
|---------------|----------|--------------------|--------------------|-------------|-----------------|-----------------|------|------|------|-------------|
| | | | | | | 2700 | 3000 | 3500 | 4000 | |
| XLM 3000lm | ≥95 | 350 | 1170 | 18.3 | 64 | ✓ | ✓ | ✓ | ✓ | 50K |
| | | 500 | 1665 | 26.8 | 62 | ✓ | ✓ | ✓ | ✓ | |
| | | 700 | 2160 | 38.6 | 56 | ✓ | ✓ | ✓ | ✓ | |
| | | 1050 | 3000 | 59.9 | 50 | ✓ | ✓ | ✓ | ✓ | |

ORDERING
INFORMATION



LIGHTSOURCE BY
XICATO downlights



Example of Code: **ALTRA-27-X0700-AD-95-43-BL-DX**

| Model | Colour Temperature | LED Lumen | Type | Colour Rendering | Beam Angle | Colour | Dimming Option*** |
|-------------------------|--|---|------------------------|---|---|--|--|
| ALTRA (ALTRA) | (27) 2700K (30) 3000K (35) 3500K (40) 4000K | (X0400) 400lm (X0700) 700lm (X1000) 1000lm (X1300) 1300lm (X2000) 2000lm | (AD) Adjustable | (80) ≥ 80 (95) ≥ 95* (8V) ≥ 80** Vibrant Series | (21) 21° (43) 43° (59) 59° | (WH) White (BL) Black (GR) Grey (NS) Nickel Satin (GL) Gold | (00) Without Driver (ND) Non-Dimmable (A0) Analogue (0-10V) (A1) Analogue (1-10V) (DX) DMX (DL) DALI |

* CRI 95 only for 700/1000/1300/2000lm
**Vibrant Series™ only for 3000K and 1300/2000lm
***Emergency version upon request

ALTRA - 27 - X0700 - AD - 95 - 43 - BL - DX

Create your own LED downlight with any possible combination of the above options.





Contents

LED Downlights
LED Downlights
lightsource by XICATO

**GALAXY
RECESSED /
GALAXY
SURFACE**

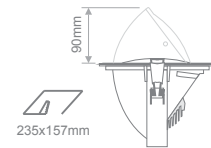
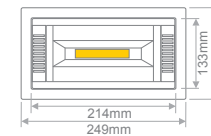
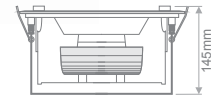


- High efficiency deep reflector with clear cover glass.
- Passive cooling through natural air flow.
- Supplied with non-dimmable drivers as standard.
- Dimmable options.

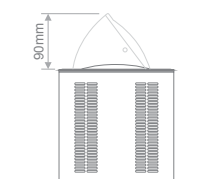
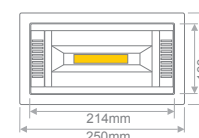
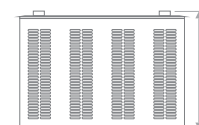
5 years LED Module Warranty*
1x2 step MacAdam Ellipse Initial
L80/B50 50.000h
C3 50.000h
Ra ≥80
Ra ≥95

LIGHTSOURCE BY
XICATO

Recessed



Surface



| Model | Colour Temperature | Lumen Output | Type | Colour Rendering | Beam Angle | Colour | Dimming Option* |
|-------------------------------|--------------------|----------------|-----------------|------------------|-----------------------|--------------------------|-----------------------|
| Galaxy Recessed (GALAXY R) | (27) 2700K | (X3000) 3000lm | (AD) Adjustable | (80) ≥80 | (6852) 68°x52° | (WH) White (BL) Black | (00) Without Driver |
| | (30) 3000K | | | | (7254) 72°x54° | | (ND) Non-Dimmable |
| (35) 3500K | (56104) 56°x104° | | | | (A0) Analogue (0-10V) | | |
| (40) 4000K | (104106) 104°x106° | | | | (A1) Analogue (1-10V) | | |
| Galaxy Surface (GALAXY S) | | | | | | | (DX) DMX (DL) DALI |

*Emergency version upon request

Create your own LED downlight with any possible combination of the above options.

Ordering Code Example:
GALAXY R - 27 - X3000 - AD - 95 - 56104 - BL - DX

Model Colour Temperature Lumen Output Type Colour Rendering Beam Angle Colour Dimming Option

Available upon request:
✓ Emergency version

*ELECTRON SA offers 5 years LED module warranty (luminaire thermally validated by Xicato).

LED Downlights
LED Downlights
lightsource by XICATO

KRONOS



LIGHTSOURCE BY
XICATO

- High efficiency deep reflector with clear cover glass.
- Passive cooling through natural air flow.

| | | | | | |
|---|---|---------------------------|----------------------|------------------|------------------|
| 5 years LED Module Warranty* | 1x2 step MacAdam Ellipse Initial | L80/B50 50.000h | C3 50.000h | Ra ≥80 | Ra ≥95 |
|---|---|---------------------------|----------------------|------------------|------------------|



| Model | Colour Temperature | LED Lumen | Type | Colour Rendering | Beam Angle | Colour | Dimming Option*** |
|---------------------------|--------------------|----------------|---------------|------------------------------|------------|-------------------|-----------------------|
| KRONOS (KRONOS) | [27] 2700K | (X0400) 400lm | Fixed (FX) | [80] ≥80 | [21] 21° | (WH) White | (00) Without Driver |
| | [30] 3000K | (X0700) 700lm | | [95] ≥95* | [43] 43° | (BL) Black | (ND) Non-Dimmable |
| | [35] 3500K | (X1000) 1000lm | | [8V] ≥80** Vibrant Series | [59] 59° | (GR) Grey | (A0) Analogue (0-10V) |
| | [40] 4000K | (X1300) 1300lm | | | | (NS) Nickel Satin | (A1) Analogue (1-10V) |
| | | (X2000) 2000lm | | | | (GL) Gold | (DX) DMX |
| | | | | | | | (DL) DALI |

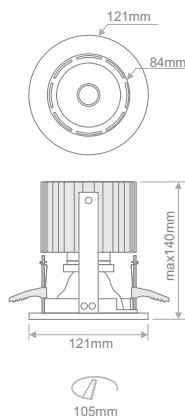
* CRI 95 only for 700/1000/1300/2000lm
**Vibrant Series™ only for 3000K and 1300/2000lm
***Emergency version upon request

Create your own LED downlight with any possible combination of the above options.

Ordering Code Example:

KRONOS - 27 - X0700 - FX - 95 - 43 - BL - DX

Model | Colour Temperature | LED Lumen | Type | Colour Rendering | Beam Angle | Colour | Dimming Option



Available upon request:
✓ Emergency version

*ELECTRON SA offers 5 years LED module warranty (luminaire thermally validated by Xicato).

Contents

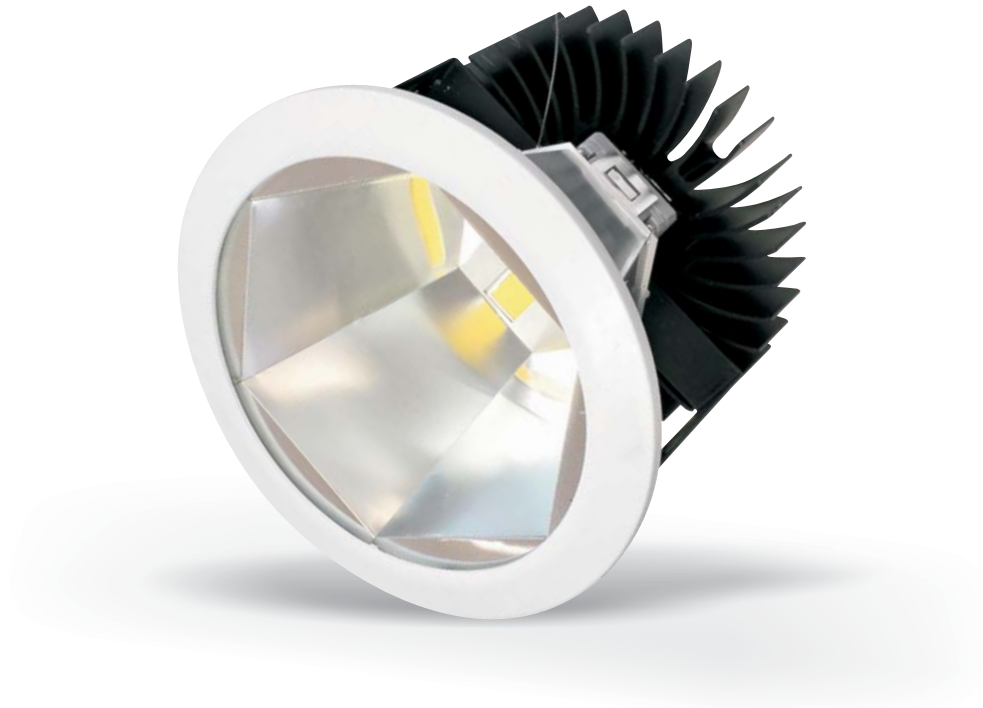
fibreLED
LED Lighting Specialists



Contents

LED Downlights
LED Downlights
lightsource by XICATO

STAR

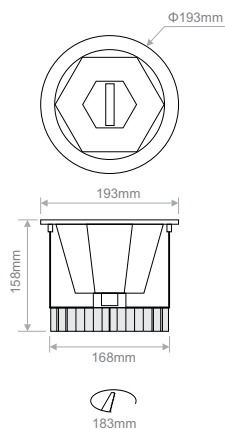


LIGHTSOURCE BY
XICATO

| | | | | | |
|---|---|---------------------------|----------------------|------------------|------------------|
| 5 years LED Module Warranty* | 1x2 step MacAdam Ellipse Initial | L80/B50 50.000h | C3 50.000h | Ra ≥80 | Ra ≥95 |
|---|---|---------------------------|----------------------|------------------|------------------|

| Model | Colour Temperature | Lumen Output | Type | Colour Rendering | Beam Angle | Colour | Dimming Option* |
|-----------------------|--------------------|----------------|---------------|-----------------------|------------|------------|---------------------|
| STAR (STAR) | (27) 2700K | (X3000) 3000lm | (FX) Fixed | (80) ≥80 | (30) 30° | (WH) White | (00) Without Driver |
| | (30) 3000K | | | (95) ≥95 | | (BL) Black | (ND) Non-Dimmable |
| | (35) 3500K | | | (A0) Analogue (0-10V) | | | |
| | (40) 4000K | | | (A1) Analogue (1-10V) | | | |
| | | | | | | | (DX) DMX |
| | | | | | | | (DL) DALI |

*Emergency version upon request



Create your own LED downlight with any possible combination of the above options.

Ordering Code Example:

STAR - 27 - X3000 - FX - 95 - 30 - BL - DX

Model Colour Temperature Lumen Output Type Colour Rendering Beam Angle Colour Dimming Option

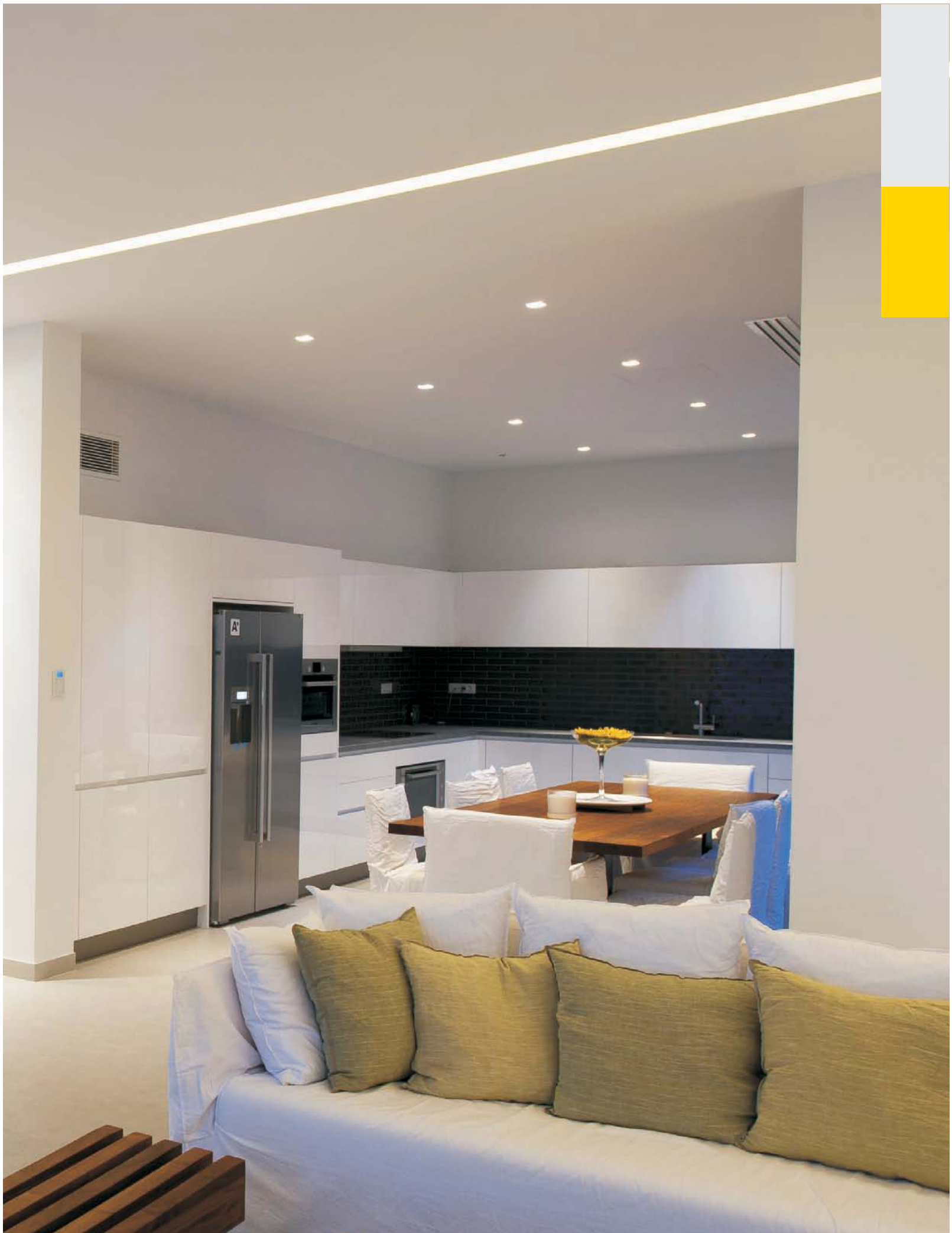
Available upon request:

✓ Emergency version

*ELECTRON SA offers 5 years LED module warranty (luminaire thermally validated by Xicato).

Contents

fibreLED
LED Lighting Specialists



LED Downlights
LED Downlights
lightsource by XICATO

ALTRA



LIGHTSOURCE BY
XICATO

- High efficiency deep reflector with clear cover glass.
- Supplied with non-dimmable drivers as standard.
- Dimmable options.

| | | | | | |
|---|---|---------------------------|----------------------|------------------|------------------|
| 5 years LED Module Warranty* | 1x2 step MacAdam Ellipse Initial | L80/B50 50.000h | C3 50.000h | Ra ≥80 | Ra ≥95 |
|---|---|---------------------------|----------------------|------------------|------------------|

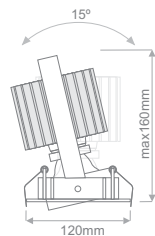
| Model | Colour Temperature | LED Lumen | Type | Colour Rendering | Beam Angle | Colour | Dimming Option*** |
|-------------------------|--------------------|----------------|--------------------|------------------------------|------------|-------------------|-----------------------|
| ALTRA (ALTRA) | (27) 2700K | (X0400) 400lm | (AD) Adjustable | (80) ≥80 | (21) 21° | (WH) White | (00) Without Driver |
| | (30) 3000K | (X0700) 700lm | | (95) ≥95* | (43) 43° | (BL) Black | (ND) Non-Dimmable |
| | (35) 3500K | (X1000) 1000lm | | (8V) ≥80** Vibrant Series | (59) 59° | (GR) Grey | (AO) Analogue (0-10V) |
| | (40) 4000K | (X1300) 1300lm | | | | (NS) Nickel Satin | (A1) Analogue (1-10V) |
| | | (X2000) 2000lm | | | | (GL) Gold | (DX) DMX |
| | | | | | | (DL) DALI | |

* CRI 95 only for 700/1000/1300/2000lm
**Vibrant Series™ only for 3000K and 1300/2000lm
***Emergency version upon request

Create your own LED downlight with any possible combination of the above options.

Ordering Code Example:

| | | | | | | | | | | | | | | |
|-------|---|--------------------|---|-----------|---|------|---|------------------|---|------------|---|--------|---|----------------|
| ALTRA | - | 27 | - | X0700 | - | AD | - | 95 | - | 43 | - | BL | - | DX |
| Model | | Colour Temperature | | LED Lumen | | Type | | Colour Rendering | | Beam Angle | | Colour | | Dimming Option |



Available upon request:
✓ Emergency version

*ELECTRON SA offers 5 years LED module warranty (luminaire thermally validated by Xicato).

Contents

fibreLED
LED Lighting Specialists

LED Downlights
LED Downlights
lightsource by XICATO

VITA



LIGHTSOURCE BY
XICATO

- High efficiency deep reflector.
- Supplied with non-dimmable drivers as standard.
- Dimmable options.
- Cutout for AR111.

| | | | | | |
|---|---|---------------------------|----------------------|------------------|------------------|
| 5 years LED Module Warranty* | 1x2 step MacAdam Ellipse Initial | L80/B50 50.000h | C3 50.000h | Ra ≥80 | Ra ≥95 |
|---|---|---------------------------|----------------------|------------------|------------------|

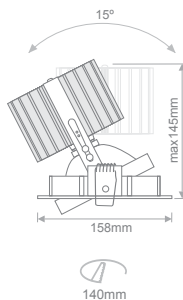
| Model | Colour Temperature | LED Lumen | Type | Colour Rendering | Beam Angle | Colour | Dimming Option*** |
|----------------|--------------------|----------------|--------------------|------------------------------|------------|------------|-----------------------|
| VITA (VITA) | (27) 2700K | (X0400) 400lm | (AD) Adjustable | (80) ≥80 | (34) 34° | (WH) White | (00) Without Driver |
| | (30) 3000K | (X0700) 700lm | | (95) ≥95* | | (BL) Black | (ND) Non-Dimmable |
| | (35) 3500K | (X1000) 1000lm | | (8V) ≥80** Vibrant Series | | (GR) Grey | (AO) Analogue (0-10V) |
| | (40) 4000K | (X1300) 1300lm | | | | (DX) DMX | |
| | | (X2000) 2000lm | | | | (DL) DALI | |
| | | | | | | | |

* CRI 95 only for 700/1000/1300/2000lm
**Vibrant Series™ only for 3000K and 1300/2000lm
***Emergency version upon request

Create your own LED downlight with any possible combination of the above options.

Ordering Code Example:

| | | | | | | | | | | | | | | |
|-------|---|--------------------|---|-----------|---|------|---|------------------|---|------------|---|--------|---|----------------|
| VITA | - | 40 | - | X2000 | - | AD | - | 80 | - | 34 | - | GR | - | ND |
| Model | | Colour Temperature | | LED Lumen | | Type | | Colour Rendering | | Beam Angle | | Colour | | Dimming Option |



Available upon request:
✓ Emergency version

*ELECTRON SA offers 5 years LED module warranty (luminaire thermally validated by Xicato).

LED Downlights
LED Downlights
lightsource by XICATO

LIBRA



LIGHTSOURCE BY
XICATO

- High efficiency deep reflector with clear cover glass.
- Supplied with non-dimmable drivers as standard.
- Dimmable options.
- Cutout for AR111.

| | | | | | |
|---|---|---------------------------|----------------------|------------------|------------------|
| 5 years LED Module Warranty* | 1x2 step MacAdam Ellipse Initial | L80/B50 50.000h | C3 50.000h | Ra ≥80 | Ra ≥95 |
|---|---|---------------------------|----------------------|------------------|------------------|

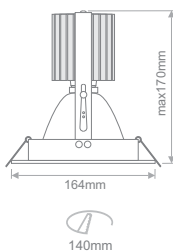
| Model | Colour Temperature | LED Lumen | Type | Colour Rendering | Beam Angle | Colour | Dimming Option*** |
|-------------------------|--------------------|--------------------------------|------------|------------------------------|------------|----------------|-----------------------|
| LIBRA (LIBRA) | (27) 2700K | (X0400) 400lm (X0700) 700lm | (FX) Fixed | (80) ≥80 | (14) 14.5° | (AL) Aluminium | (00) Without Driver |
| | (30) 3000K | (X1000) 1000lm | | (95) ≥95* | (25) 25.5° | (WH) White | (ND) Non-Dimmable |
| | (35) 3500K | (X1300) 1300lm | | (8V) ≥80** Vibrant Series | (39) 39° | (BL) Black | (AO) Analogue (0-10V) |
| | (40) 4000K | (X2000) 2000lm | | | | (GR) Grey | (A1) Analogue (1-10V) |
| | | | | | | | |

* CRI 95 only for 700/1000/1300/2000lm
**Vibrant Series™ only for 3000K and 1300/2000lm
***Emergency version upon request

Create your own LED downlight with any possible combination of the above options.

Ordering Code Example:

| | | | | | | | | | | | | | | |
|-------|---|--------------------|---|-----------|---|------|---|------------------|---|------------|---|--------|---|----------------|
| LIBRA | - | 27 | - | X1300 | - | FX | - | 95 | - | 14 | - | BL | - | DX |
| Model | | Colour Temperature | | LED Lumen | | Type | | Colour Rendering | | Beam Angle | | Colour | | Dimming Option |



Available upon request:
✓ Emergency version

*ELECTRON SA offers 5 years LED module warranty (luminaire thermally validated by Xicato).

Contents

fibreLED
LED Lighting Specialists



LED Downlights
LED Downlights
lightsource by XICATO

ZETA



LIGHTSOURCE BY
XICATO

- High efficiency deep reflector with clear cover glass.
- Supplied with non-dimmable drivers as standard.
- Dimmable options.
- Cutout for AR111.

| | | | | | |
|---|---|---------------------------|----------------------|------------------|------------------|
| 5 years LED Module Warranty* | 1x2 step MacAdam Ellipse Initial | L80/B50 50.000h | C3 50.000h | Ra ≥80 | Ra ≥95 |
|---|---|---------------------------|----------------------|------------------|------------------|

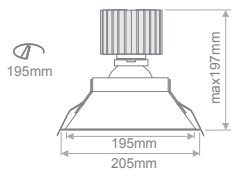
| Model | Colour Temperature | LED Lumen | Type | Colour Rendering | Beam Angle | Colour | Dimming Option*** |
|-----------------------|--------------------|----------------|------------|------------------------------|------------|------------|-----------------------|
| ZETA (ZETA) | | (X0400) 400lm | (FX) Fixed | | | | (00) Without Driver |
| | (27) 2700K | (X0700) 700lm | | (80) ≥80 | (14) 14.5° | (WH) White | (ND) Non-Dimmable |
| | (30) 3000K | (X1000) 1000lm | | (95) ≥95* | (25) 25.5° | (BL) Black | (A0) Analogue (0-10V) |
| | (35) 3500K | (X1300) 1300lm | | (8V) ≥80** Vibrant Series | (39) 39° | (GR) Grey | (A1) Analogue (1-10V) |
| | (40) 4000K | (X2000) 2000lm | | | (DX) DMX | | |
| | | (X3000) 3000lm | | | (DL) DALI | | |

* CRI 95 only for 700/1000/1300/2000lm
**Vibrant Series™ only for 3000K and 1300/2000/3000lm
***Emergency version upon request

Create your own LED downlight with any possible combination of the above options.

Ordering Code Example:

| | | | | | | | |
|-------|--------------------|-----------|------|------------------|------------|--------|----------------|
| ZETA | - 27 - | X0700 - | FX - | 95 - | 14 - | BL - | DX |
| Model | Colour Temperature | LED Lumen | Type | Colour Rendering | Beam Angle | Colour | Dimming Option |



Available upon request:
✓ Emergency version

*ELECTRON SA offers 5 years LED module warranty (luminaire thermally validated by Xicato).

Contents

fibreLED
LED Lighting Specialists



LED Downlights
LED Downlights
lightsource by XICATO

ZETA MINI



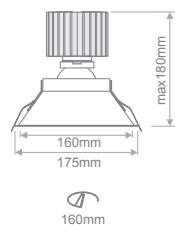
LIGHTSOURCE BY
XICATO

- High efficiency deep reflector with clear cover glass.
- Supplied with non-dimmable drivers as standard.
- Dimmable options.
- Cutout for AR111.

| | | | | | |
|---|---|---------------------------|----------------------|------------------|------------------|
| 5 years LED Module Warranty* | 1x2 step MacAdam Ellipse Initial | L80/B50 50.000h | C3 50.000h | Ra ≥80 | Ra ≥95 |
|---|---|---------------------------|----------------------|------------------|------------------|

| Model | Colour Temperature | LED Lumen | Type | Colour Rendering | Beam Angle | Colour | Dimming Option*** |
|------------------------------|--------------------|----------------|------------|---|--------------------------------------|---------------------------------------|-----------------------|
| ZETA MINI (ZETA M) | | [X0400] 400lm | (FX) Fixed | [80] ≥80 [95] ≥95* [8V] ≥80** Vibrant Series | [14] 14.5° [25] 25.5° [39] 39° | [WH] White [BL] Black [GR] Grey | [00] Without Driver |
| | [27] 2700K | [X0700] 700lm | | | | | [ND] Non-Dimmable |
| | [30] 3000K | [X1000] 1000lm | | | | | [A0] Analogue (0-10V) |
| | [35] 3500K | [X1300] 1300lm | | | | | [A1] Analogue (1-10V) |
| | [40] 4000K | [X2000] 2000lm | | | | | [DX] DMX |
| | | [X3000] 3000lm | | | | | [DL] DALI |
| | | | | | | | |

* CRI 95 only for 700/1000/1300/2000lm
**Vibrant Series™ only for 3000K and 1300/2000/3000lm
***Emergency version upon request



Create your own LED downlight with any possible combination of the above options.

Ordering Code Example:

ZETA M - 27 - X0700 - FX - 95 - 14 - BL - DX

Model Colour Temperature LED Lumen Type Colour Rendering Beam Angle Colour Dimming Option

Available upon request:
✓ Emergency version

*ELECTRON SA offers 5 years LED module warranty (luminaire thermally validated by Xicato).

Contents

fibreLED
LED Lighting Specialists



LED Downlights
LED Downlights
lightsource by XICATO

VERO



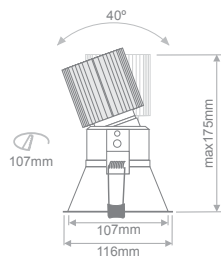
LIGHTSOURCE BY
XICATO

- High efficiency deep reflector with clear cover glass.
- Supplied with non-dimmable drivers as standard.
- Dimmable options.
- Cutout for MR16.

| | | | | | |
|---|---|---------------------------|----------------------|------------------|------------------|
| 5 years LED Module Warranty* | 1x2 step MacAdam Ellipse Initial | L80/B50 50.000h | C3 50.000h | Ra ≥80 | Ra ≥95 |
|---|---|---------------------------|----------------------|------------------|------------------|

| Model | Colour Temperature | LED Lumen | Type | Colour Rendering | Beam Angle | Colour | Dimming Option** |
|-----------------------|--------------------|---------------|--------------------|-----------------------|------------|------------|---------------------|
| VERO (VERO) | (27) 2700K | (X0400) 400lm | (AD) Adjustable | (80) ≥80 | (40) 40° | (WH) White | (00) Without Driver |
| | (30) 3000K | | | (95) ≥95* | (56) 56° | (BL) Black | (ND) Non-Dimmable |
| | (35) 3500K | (X0700) 700lm | | (A0) Analogue (0-10V) | | | |
| | (40) 4000K | | | (A1) Analogue (1-10V) | (DX) DMX | (DL) DALI | |

* CRI 95 only for 700m
**Emergency version upon request



Create your own LED downlight with any possible combination of the above options.

Ordering Code Example:

| | | | | | | | |
|-------|--------------------|-----------|--------|------------------|------------|--------|----------------|
| VERO | - 40 - | X0400 | - AD - | 80 - | 40 - | WH - | AO |
| Model | Colour Temperature | LED Lumen | Type | Colour Rendering | Beam Angle | Colour | Dimming Option |

Available upon request:
✓ Emergency version

*ELECTRON SA offers 5 years LED module warranty (luminaire thermally validated by Xicato).

Contents

fibreLED
LED Lighting Specialists

LED Downlights
LED Downlights
lightsource by XICATO

IVY



LIGHTSOURCE BY
XICATO

- High efficiency deep reflector with clear cover glass.
- Supplied with non-dimmable drivers as standard.
- Dimmable options.
- Cutout for MR16.

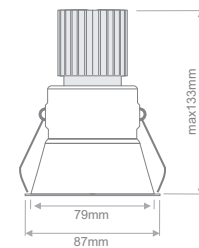
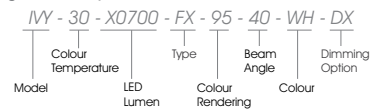
| | | | | | |
|---|---|---------------------------|----------------------|------------------|------------------|
| 5 years LED Module Warranty* | 1x2 step MacAdam Ellipse Initial | L80/B50 50.000h | C3 50.000h | Ra ≥80 | Ra ≥95 |
|---|---|---------------------------|----------------------|------------------|------------------|

| Model | Colour Temperature | LED Lumen | Type | Colour Rendering | Beam Angle | Colour | Dimming Option** |
|--------------|--------------------|---------------|------------|------------------|------------|------------|-----------------------|
| IVY (IVY) | (27) 2700K | (X0400) 400lm | (FX) Fixed | (80) ≥80 | (40) 40 | (WH) White | (00) Without Driver |
| | (30) 3000K | | | (95) ≥95* | (56) 56° | (BL) Black | (ND) Non-Dimmable |
| | (35) 3500K | (X0700) 700lm | | | | | (A0) Analogue (0-10V) |
| | (40) 4000K | | | | | | (A1) Analogue (1-10V) |
| | | | | | | | (DX) DMX |
| | | | | | | | (DL) DALI |

* CRI 95 only for 700lm
**Emergency version upon request

Create your own LED downlight with any possible combination of the above options.

Ordering Code Example:



Available upon request:

✓ Emergency version

*ELECTRON SA offers 5 years LED module warranty (luminaire thermally validated by Xicato).

Contents

fibreLED
LED Lighting Specialists

LED Downlights
LED Downlights
lightsource by XICATO

KAPA



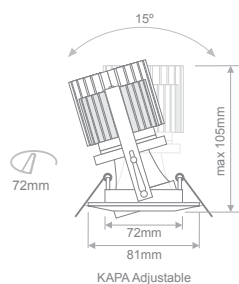
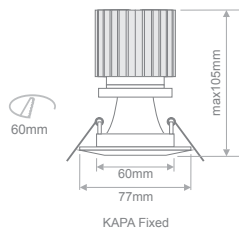
LIGHTSOURCE BY
XICATO

- High efficiency deep reflector.
- Supplied with non-dimmable drivers as standard.
- Dimmable options.
- Cutout for MR16.

| | | | | | |
|---|---|---------------------------|----------------------|------------------|------------------|
| 5 years LED Module Warranty* | 1x2 step MacAdam Ellipse Initial | L80/B50 50.000h | C3 50.000h | Ra ≥80 | Ra ≥95 |
|---|---|---------------------------|----------------------|------------------|------------------|

| Model | Colour Temperature | Lumen Output | Type | Colour Rendering | Beam Angle | Colour | Dimming Option** |
|----------------|--------------------|---------------|--------------------|------------------|------------|-------------------|-----------------------|
| KAPA (KAPA) | (27) 2700K | (X0400) 400lm | (AD) Adjustable | (80) ≥80 | (40) 40° | (NM) Nickel Mat | (00) Without Driver |
| | (30) 3000K | | | | | (NC) Nickel | (ND) Non-Dimmable |
| | (35) 3500K | (X0700) 700lm | (FX) Fixed | (95) ≥95* | (56) 56° | (WH) White | (A0) Analogue (0-10V) |
| | (40) 4000K | | | | | (BL) Black | (A1) Analogue (1-10V) |
| | | | | | | (GL) Gold Mat | (DX) DMX |
| | | | | | | (GR) Gold | (DL) DALI |
| | | | | | | (BN) Brush Nickel | |
| | | | | | | (AL) Aluminium | |

* CRI 95 only for 700lm
**Emergency version upon request



Create your own LED downlight with any possible combination of the above options.

Ordering Code Example:

| | | | | | | | | | | | | | | |
|-------|---|--------------------|---|-----------|---|------|---|------------------|---|------------|---|--------|---|----------------|
| KAPA | - | 40 | - | X0700 | - | AD | - | 80 | - | 40 | - | WH | - | ND |
| Model | | Colour Temperature | | LED Lumen | | Type | | Colour Rendering | | Beam Angle | | Colour | | Dimming Option |

Available upon request:
✓ Emergency version

*ELECTRON SA offers 5 years LED module warranty (luminaire thermally validated by Xicato).



Contents

LED Downlights
LED Downlights
lightsource by XICATO

NIO Round

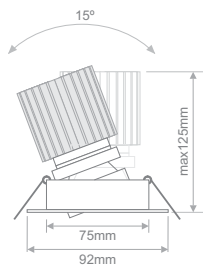


LIGHTSOURCE BY
XICATO

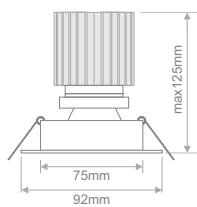
- High efficiency deep reflector with clear cover glass.
- Supplied with non-dimmable drivers as standard.
- Dimmable options.
- Cutout for MR16.

| | | | | | |
|---|---|---------------------------|----------------------|------------------|------------------|
| 5 years LED Module Warranty* | 1x2 step MacAdam Ellipse Initial | L80/B50 50.000h | C3 50.000h | Ra ≥80 | Ra ≥95 |
|---|---|---------------------------|----------------------|------------------|------------------|

| Model | Colour Temperature | LED Lumen | Type | Colour Rendering | Beam Angle | Colour | Dimming Option** |
|------------------------------|--------------------|----------------|-----------------|------------------------------|----------------|-----------------------|-----------------------|
| NIO Round (NIO RD) | (27) 2700K | (X0400) 400lm | (AD) Adjustable | (80) ≥80 | (40) 40° | (WH) White | (00) Without Driver |
| | (30) 3000K | (X0700) 700lm | (FX) Fixed | (95) ≥95* | (56) 56° | (BL) Black | (ND) Non-Dimmable |
| | (35) 3500K | (X1300) 1300lm | | (8V) ≥80** Vibrant Series | | (GR) Grey | (A0) Analogue (0-10V) |
| | (40) 4000K | | | | (AL) Aluminium | (A1) Analogue (1-10V) | |
| | | | | | | (DL) DALI | |



NIO Round Adjustable



NIO Round Fixed



75mm

* CRI 95 only for 700/1300lm
**Vibrant Series™ only for 3000K and 1300lm
***Emergency version upon request

Create your own LED downlight with any possible combination of the above options.

Ordering Code Example:

| | | | | | | | |
|--------|--------------------|-----------|------|------------------|------------|--------|----------------|
| NIO RD | - 40 | - X0700 | - AD | - 80 | - 40 | - AL | - DX |
| Model | Colour Temperature | LED Lumen | Type | Colour Rendering | Beam Angle | Colour | Dimming Option |

Available upon request:
✓ Emergency version

*ELECTRON SA offers 5 years LED module warranty (luminaire thermally validated by Xicato).

Contents

fibreLED
LED Lighting Specialists

LED Downlights
LED Downlights
lightsource by XICATO

NIO Square

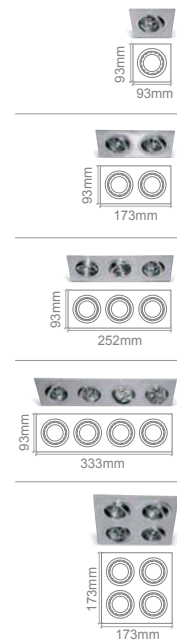


- High efficiency deep reflector with clear cover glass.
- Supplied with non-dimmable drivers as standard.
- Dimmable options.
- Cutout for MR16.

LIGHTSOURCE BY
XICATO

| | | | | | |
|------------------------------------|--|--------------------|---------------|-----------|-----------|
| 5 years LED Module Warranty* | 1x2 step MacAdam Ellipse Initial | L80/B50 50.000h | C3 50.000h | Ra ≥80 | Ra ≥95 |
|------------------------------------|--|--------------------|---------------|-----------|-----------|

Also available:



| Model | Colour Temperature | LED Lumen | Type | Colour Rendering | Beam Angle | Colour | Dimming Option*** |
|-------------------------------|--------------------|----------------|--------------------|------------------------------|------------|----------------|-----------------------|
| NIO Square (NIO SQ) | (27) 2700K | (X0400) 400lm | (AD) Adjustable | (80) ≥80 | (40) 40° | (WH) White | (00) Without Driver |
| | (30) 3000K | (X0700) 700lm | | (95) ≥95* | (56) 56° | (BL) Black | (ND) Non-Dimmable |
| | (35) 3500K | (X1300) 1300lm | | (8V) ≥80** Vibrant Series | | (GR) Grey | (A0) Analogue (0-10V) |
| | (40) 4000K | | | | | (AL) Aluminium | (A1) Analogue (1-10V) |
| | | | | | | | (DX) DMX |
| | | | | | | | (DL) DALI |

* CRI 95 only for 700/1300lm
**Vibrant Series™ only for 3000K and 1300lm
***Emergency version upon request

Create your own LED downlight with any possible combination of the above options.

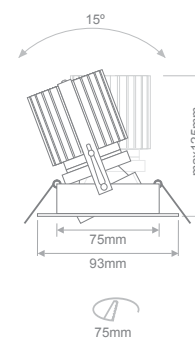
Ordering Code Example:

| | | | | | | | |
|--------|--------------------|-----------|--------|------------------|------------|--------|----------------|
| NIO SQ | - 40 - | X0700 | - AD - | 80 - | 40 - | AL - | DX |
| Model | Colour Temperature | LED Lumen | Type | Colour Rendering | Beam Angle | Colour | Dimming Option |

Available upon request:

✓ Emergency version

*ELECTRON SA offers 5 years LED module warranty (luminaire thermally validated by Xicato).



Contents

fibreLED
LED Lighting Specialists

LED Downlights
LED Downlights
lightsource by XICATO

JUPITER

IP65

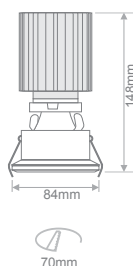


LIGHTSOURCE BY
XICATO

- Dimmable options.
- Emergency version upon request
- Cutout for MR16.
- IP65

| | | | | | | |
|---|---|---------------------------|----------------------|------------------|------------------|-------------|
| 5 years LED Module Warranty* | 1x2 step MacAdam Ellipse Initial | L80/B50 50.000h | C3 50.000h | Ra ≥80 | Ra ≥95 | IP65 |
|---|---|---------------------------|----------------------|------------------|------------------|-------------|

| Model | Colour Temperature | LED Lumen | Type | Colour Rendering | Beam Angle | Colour | Dimming Option*** |
|-----------------------------|--------------------|----------------|---------------|------------------------------|------------------|----------------|-----------------------|
| JUPITER (JUPITER) | (27) 2700K | [X0700] 700lm | (FX) Fixed | (80) ≥80 | (DF) Diffused | [WH] White | [00] Without Driver |
| | (30) 3000K | [X1000] 1000lm | | (95) ≥95* | | [BL] Black | [ND] Non-Dimmable |
| | (35) 3500K | [X1300] 1300lm | | (8V) ≥80** Vibrant Series | | [GR] Grey | [A0] Analogue (0-10V) |
| | (40) 4000K | | | | | [AL] Aluminium | [A1] Analogue (1-10V) |
| | | | | | | [DX] DMX | [DL] DALI |



Create your own LED downlight with any possible combination of the above options.

Ordering Code Example:

JUPITER - 40 - X0700 - FX - 80 - DF - AL - DX

Model Colour Temperature LED Lumen Type Colour Rendering Beam Angle Colour Dimming Option

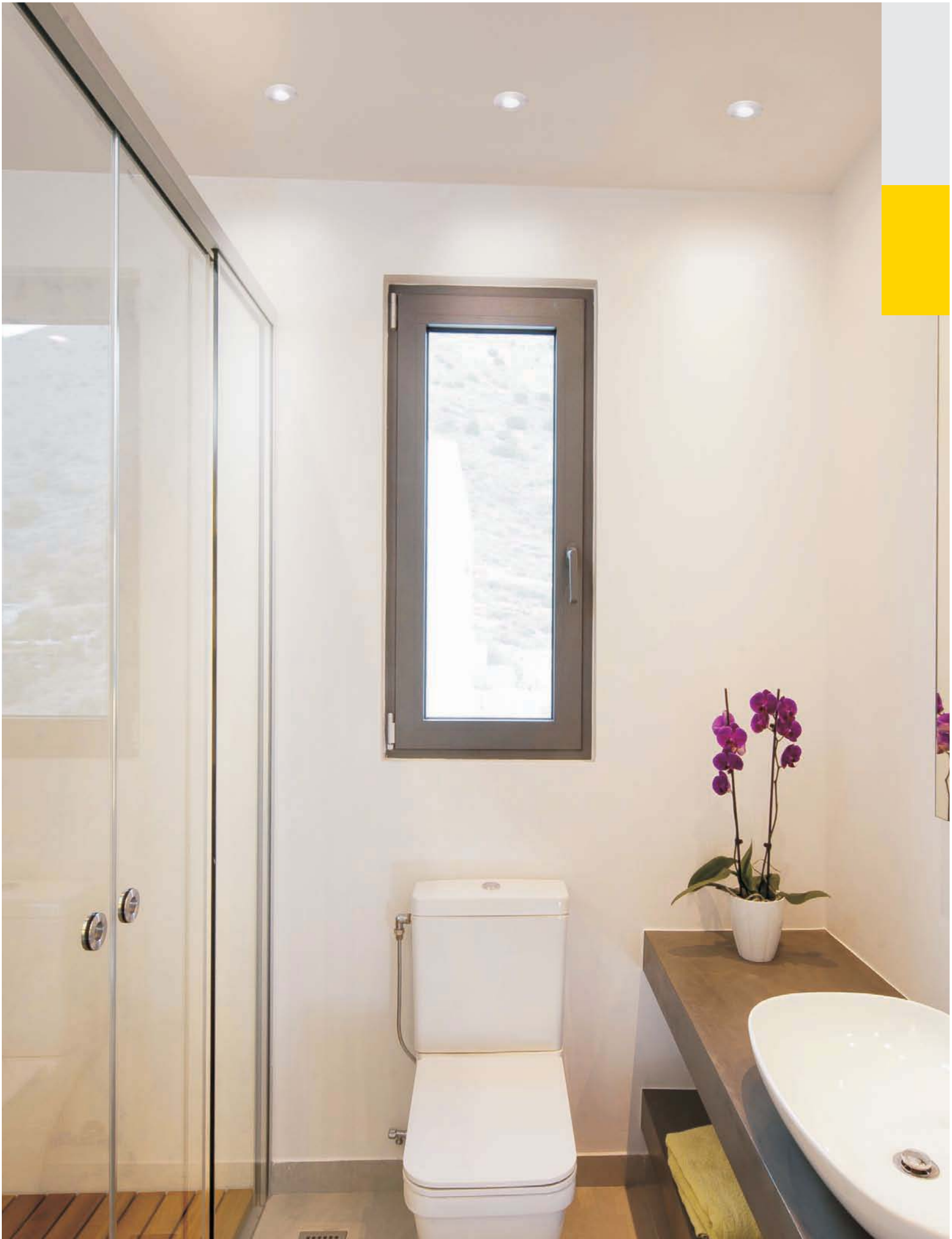
Available upon request:
✓ Emergency version

*ELECTRON SA offers 5 years LED module warranty (luminaire thermally validated by Xicato).

* CRI 95 only for 700/1300lm
**Vibrant Series™ only for 3000K and 1300lm
***Emergency version upon request

Contents

fibreLED
LED Lighting Specialists



Contents

LED Downlights
LED Downlights
lightsource by XICATO

HELIO

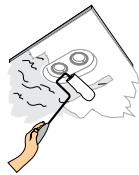


- High efficiency deep reflector.
- Supplied with non-dimmable drivers as standard.
- Dimmable options.
- Cutout for AR111.
- Plaster luminaire suitable for plasterboard of 9-15mm.
- Trimless effect.

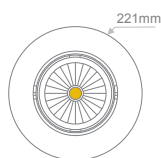
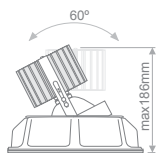
LIGHTSOURCE BY
XICATO

| | | | | | |
|---|---|---------------------------|----------------------|------------------|------------------|
| 5 years LED Module Warranty* | 1x2 step MacAdam Ellipse Initial | L80/B50 50.000h | C3 50.000h | Ra ≥80 | Ra ≥95 |
|---|---|---------------------------|----------------------|------------------|------------------|

| Model | Colour Temperature | LED Lumen | Type | Colour Rendering | Beam Angle | Colour | Dimming Option*** |
|-------------------------|--------------------|----------------|--------------------|------------------------------|------------|------------|-----------------------|
| HELIO (HELIO) | (27) 2700K | (X0400) 400lm | (AD) Adjustable | (80) ≥80 | (34) 34° | (WH) White | (00) Without Driver |
| | (30) 3000K | (X0700) 700lm | | (95) ≥95* | | | (ND) Non-Dimmable |
| | (35) 3500K | (X1000) 1000lm | | (8V) ≥80** Vibrant Series | | | (A0) Analogue (0-10V) |
| | (40) 4000K | (X1300) 1300lm | | | | | (A1) Analogue (1-10V) |
| | | (X2000) 2000lm | | | | | (DX) DMX |
| | | | | | | | (DL) DALI |



* CRI 95 only for 700/1000/1300/2000lm
**Vibrant Series™ only for 3000K and 1300/2000lm
***Emergency version upon request



Create your own LED downlight with any possible combination of the above options.

Ordering Code Example:

| | | | | | | | |
|-------|--------------------|-----------|--------|------------------|------------|--------|----------------|
| HELIO | - 40 - | X1300 | - AD - | 80 - | 34 - | WH - | DX |
| Model | Colour Temperature | LED Lumen | Type | Colour Rendering | Beam Angle | Colour | Dimming Option |

Available upon request:
✓ Emergency version

*ELECTRON SA offers 5 years LED module warranty (luminaire thermally validated by Xicato).

LED Downlights
LED Downlights
lightsource by XICATO

PANDORA



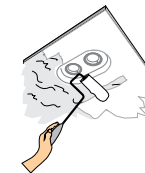
- High efficiency deep reflector.
- Supplied with non-dimmable drivers as standard.
- Dimmable options.
- Cutout for AR111.
- Plaster luminaire suitable for plasterboard of 9-15mm.
- Trimless effect.

LIGHTSOURCE BY
XICATO

| | | | | | |
|---|---|---------------------------|----------------------|------------------|------------------|
| 5 years LED Module Warranty* | 1x2 step MacAdam Ellipse Initial | L80/B50 50.000h | C3 50.000h | Ra ≥80 | Ra ≥95 |
|---|---|---------------------------|----------------------|------------------|------------------|



| Model | Colour Temperature | Lumen Output | Type | Colour Rendering | Beam Angle | Colour | Dimming Option*** |
|-----------------------------|--------------------|----------------|--------------------|------------------------------|------------|------------|-----------------------|
| PANDORA (PANDORA) | (27) 2700K | (X0400) 400lm | (AD) Adjustable | (80) ≥80 | (34) 34° | (WH) White | (00) Without Driver |
| | (30) 3000K | (X0700) 700lm | | (95) ≥95* | | | (ND) Non-Dimmable |
| | (35) 3500K | (X1000) 1000lm | | (BV) ≥80** Vibrant Series | | | (A0) Analogue (0-10V) |
| | (40) 4000K | (X1300) 1300lm | | | | | (A1) Analogue (1-10V) |
| | | (X2000) 2000lm | | | | | (DX) DMX |
| | | | | | | | (DL) DALI |

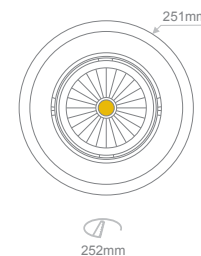
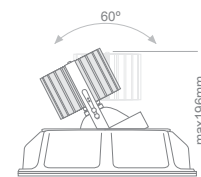


* CRI 95 only for 700/1000/1300/2000lm
**Vibrant Series™ only for 3000K and 1300/2000lm
***Emergency version upon request

Create your own LED downlight with any possible combination of the above options.

Ordering Code Example:
PANDORA - 40 - X1300 - AD - 80 - 34 - WH - DX

| | | | | | | |
|-------|--------------------|-----------|------|------------|--------|----------------|
| Model | Colour Temperature | LED Lumen | Type | Beam Angle | Colour | Dimming Option |
|-------|--------------------|-----------|------|------------|--------|----------------|



Available upon request:

✓ Emergency version

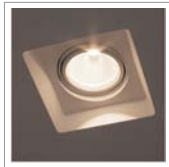
*ELECTRON SA offers 5 years LED module warranty (luminaire thermally validated by Xicato).

Contents

fibreLED
LED Lighting Specialists

LED Downlights
LED Downlights
lightsource by XICATO

HEKTOR

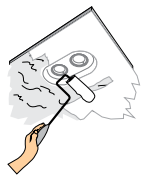


- High efficiency deep reflector.
- Supplied with non-dimmable drivers as standard.
- Dimmable options.
- Cutout for AR111.
- Plaster luminaire suitable for plasterboard of 9-15mm.
- Trimless effect.

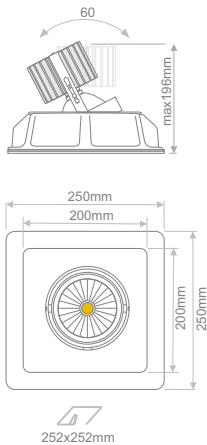
LIGHTSOURCE BY
XICATO

| | | | | | |
|---|---|---------------------------|----------------------|------------------|------------------|
| 5 years LED Module Warranty* | 1x2 step MacAdam Ellipse Initial | L80/B50 50.000h | C3 50.000h | Ra ≥80 | Ra ≥95 |
|---|---|---------------------------|----------------------|------------------|------------------|

| Model | Colour Temperature | Lumen Output | Type | Colour Rendering | Beam Angle | Colour | Dimming Option*** |
|---------------------------|--------------------|----------------|--------------------|------------------------------|------------|------------|-----------------------|
| HEKTOR (HEKTOR) | (27) 2700K | (X0400) 400lm | Adjustable (AD) | (80) ≥80 | (34) 34° | (WH) White | (00) Without Driver |
| | (30) 3000K | (X0700) 700lm | | (95) ≥95* | | | (ND) Non-Dimmable |
| | (35) 3500K | (X1000) 1000lm | | (8V) ≥80** Vibrant Series | | | (A0) Analogue (0-10V) |
| | (40) 4000K | (X1300) 1300lm | | | | | (A1) Analogue (1-10V) |
| | | (X2000) 2000lm | | | | | (DX) DMX |
| | | | | | | | (DL) DALI |



* CRI 95 only for 700/1000/1300/2000lm
**Vibrant Series™ only for 3000K and 1300/2000lm
***Emergency version upon request



Create your own LED downlight with any possible combination of the above options.

Ordering Code Example:

| | | | | | | | |
|--------|--------------------|-----------|--------|------------------|------------|--------|----------------|
| HEKTOR | - 40 - | X2000 | - AD - | 80 - | 34 - | WH - | A1 |
| Model | Colour Temperature | LED Lumen | Type | Colour Rendering | Beam Angle | Colour | Dimming Option |

Available upon request:
✓ Emergency version

*ELECTRON SA offers 5 years LED module warranty (luminaire thermally validated by Xicato).

LED Downlights
LED Downlights
lightsource by XICATO

GALINO



- High efficiency deep reflector.
- Supplied with non-dimmable drivers as standard.
- Dimmable options.
- Cutout for AR111.
- Plaster luminaire suitable for plasterboard of 9-15mm.
- Timless effect.

LIGHTSOURCE BY
XICATO

| | | | | | |
|------------------------------------|--|--------------------|---------------|-----------|-----------|
| 5 years LED Module Warranty* | 1x2 step MacAdam Ellipse Initial | L80/B50 50.000h | C3 50.000h | Ra ≥80 | Ra ≥95 |
|------------------------------------|--|--------------------|---------------|-----------|-----------|



| Model | Colour Temperature | LED Lumen / per LED | Type | Colour Rendering | Beam Angle | Colour | Dimming Option*** |
|---------------------------|--------------------|------------------------|--------------------|------------------------------|------------|---------------|-----------------------|
| GALINO (GALINO) | (27) 2700K | (X0400) 400lm per LED | (AD) Adjustable | (80) ≥80 | (34) 34° | (WH) White | (00) Without Driver |
| | (30) 3000K | (X0700) 700lm per LED | | (95) ≥95* | | | (ND) Non-Dimmable |
| | (35) 3500K | (X1000) 1000lm per LED | | (8V) ≥80** Vibrant Series | | | (A0) Analogue (0-10V) |
| | (40) 4000K | (X1300) 1300lm per LED | | | | | (A1) Analogue (1-10V) |
| | | (X2000) 2000lm per LED | | | | | (DX) DMX |
| | | | | | | | (DL) DALI |

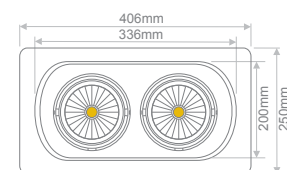
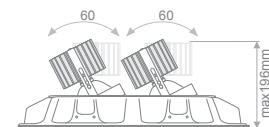
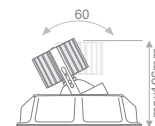


* CRI 95 only for 700/1000/1300/2000lm
**Vibrant Series™ only for 3000K and 1300/2000lm
***Emergency version upon request

Create your own LED downlight with any possible combination of the above options.

Ordering Code Example:

| | | | | | | | |
|--------|--------------------|---------------------|------|------------------|------------|--------|----------------|
| GALINO | - 40 - | X1000 - | AD - | 95 - | 34 - | WH - | DX |
| Model | Colour Temperature | LED Lumen / per LED | Type | Colour Rendering | Beam Angle | Colour | Dimming Option |



Available upon request:
✓ Emergency version

*ELECTRON SA offers 5 years LED module warranty (luminaire thermally validated by Xicato).

Contents

fibreLED
LED Lighting Specialists

LED Downlights


LED Downlights
lightsources by BRIDGELUX

BRIDGELUX SERIES

Custom-Made LED Downlight Series with Bridgelux LED Module:

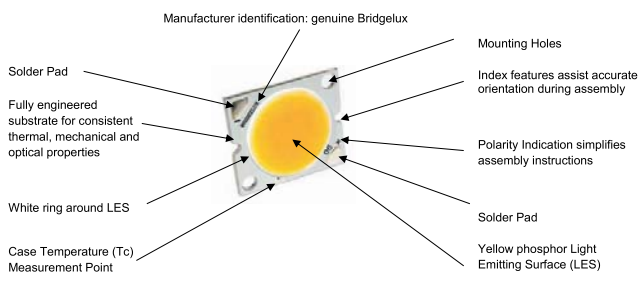


Bridgelux BXRA3 LED Array is an energy efficient, compact and cost effective solid state lighting solution to enable lighting innovation. Performance options ranging from 500 to over 10,000 lumens are available in color temperatures from 2700K to 5600K with 3SDCM MacAdam color control. These industry favorite light sources can be readily designed into a wide range of directional and diffuse applications. The BXRA3 LED Arrays are also available in 97 CRI option, delivering best-in-class quality of light and enabling very high-end lighting design.



ES Rectangle

- ✓ Compact high flux density light source
- ✓ Minimum 70, 80 and 90 CRI options
- ✓ Instant light with unlimited dimming
- ✓ High quality true color reproduction



Manufacturer identification: genuine Bridgelux

Solder Pad

Fully engineered substrate for consistent thermal, mechanical and optical properties

White ring around LES

Case Temperature (Tc) Measurement Point

Mounting Holes


Index features assist accurate orientation during assembly

Polarity Indication simplifies assembly instructions

Solder Pad

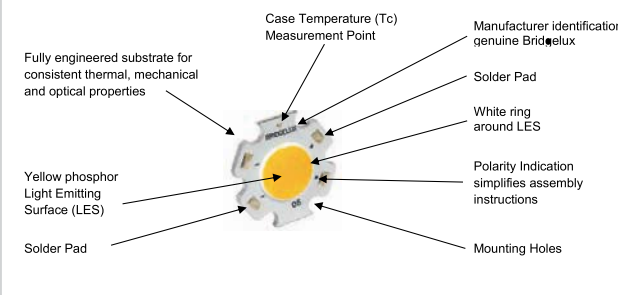
Yellow phosphor Light Emitting Surface (LES)

Note: Part number and lot codes are scribed on back of array



ES Star

- ✓ Compact high flux density light source
- ✓ Minimum 70, 80 and 90 CRI options
- ✓ Instant light with unlimited dimming
- ✓ High quality true color reproduction



Case Temperature (Tc) Measurement Point

Manufacturer identification: genuine Bridgelux

Solder Pad

White ring around LES

Polarity Indication simplifies assembly instructions

Mounting Holes

Fully engineered substrate for consistent thermal, mechanical and optical properties

Yellow phosphor Light Emitting Surface (LES)

Solder Pad

Note: Part number and lot codes are scribed on back of array



ELECTRON SA designs, develops and manufactures a variety of LED Downlights with the Bridgelux LED Module according to your requirements.

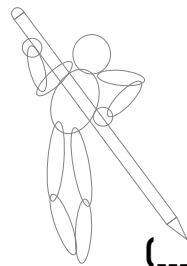
- Model of Architectural Fitting: Mars, Uranus, Kira, Bora, Zibra, Ellse, Dedalos.
- Selection amongst the BXRA ES Rectangle Array and ES Star Array Series.
- Correlated Colour Temperature (CCT): 2700K, 3000K, 3500K, 4000K, 5000K, 5600K.
- Colour Render Index (CRI): 70, 80, >90.
- Colour consistency of 3 MacAdam Ellipses for 2700-4000K and 4 MacAdam Ellipses for 5000-5600K.
- 5 year limited warranty of LED module.
- Lumen Output (lm): from 505lm to 1680lm.
- Lumen efficacy of up to 132lm/W.
- L70B50 (lumen maintenance based on LM-80 and TM21).
- Long lifetime of 50K.
- Enhanced optical control with beam angles of emitted light from 10° to 56°.
- Fixed or Adjustable Operation of luminaires.
- Colour of fitting: white, black, grey.
- Dimming Options: analogue 0-10V, analogue 1-10V, DMX, DALI, non dimmable, or even without driver.
- Emergency Option.



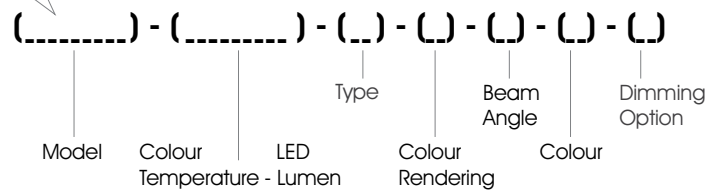
LED Downlights

LED Downlights
lightsource by BRIDGELUX

ORDERING INFORMATION



Ordering code for **BRIDGELUX** downlights



Example of Code: URANUS 10 - 56B1160 - FX - 70 - 45 - BL - DX

| Model | Colour Temperature - LED Lumen | Type | Colour Rendering | Beam Angle | Colour | Dimming Option*** |
|------------------------------------|---------------------------------|-------------------|------------------|-----------------|-------------------|-----------------------|
| URANUS 10.3W (URANUS 10) | (27B0850) 2700K - 850lm | (FX) Fixed | (70) 70* | (16) 16° | (WH) White | (00) Without Driver |
| | (30B0930) 3000K - 930lm | | (80) 80 | (38) 38° | (BL) Black | (ND) Non-Dimmable |
| | (35B0980) 3500K - 980lm | | (90) 90** | (45) 45° | (GR) Grey | (A0) Analogue (0-10V) |
| | (40B1040) 4000K - 1040lm | | | | | (A1) Analogue (1-10V) |
| | (50B1170) 5000K - 1170lm | | | | | (DX) DMX |
| | (56B1170) 5600K - 1170lm | | | | (DL) DALI | |

* 5000 & 5600K only available in CRI 70
** CRI 90 only for 2700K & 3000K
***Emergency version upon request

URANUS 10 - 56B1170 - FX - 70 - 45 - BL - DX

Create your own LED downlight with any possible combination of the above options.



LED Downlights

LED Downlights
lightsource by BRIDGELUX

VELA

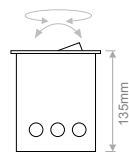
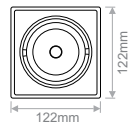


| | | | | | |
|---|---|---------------------------|------------------|------------------|------------------|
| 3 step MacAdam Ellipse Initial | 4 step MacAdam Ellipse Initial | L70/B50 50.000h | Ra ≥70 | Ra ≥80 | Ra ≥90 |
|---|---|---------------------------|------------------|------------------|------------------|

| Model | Colour Temperature | - LED Lumen /per LED | Type | Colour Rendering | Beam Angle | Colour | Dimming Option*** |
|--|--------------------|------------------------|--------------------|-----------------------|------------|------------|---------------------|
| VELA 14.7W (VELA 15) | (27B1230) | 2700K - 1230lm per LED | (AD) Adjustable | (70) 70* | (16) 16° | (BL) Black | (00) Without Driver |
| | (30B1340) | 3000K - 1340lm per LED | | (80) 80 | | | (40) 40° |
| VELA DOUBLE 29.4W (VELA D30) | (35B1420) | 3500K - 1420lm per LED | | (A0) Analogue (0-10V) | | | |
| | (40B1500) | 4000K - 1500lm per LED | | (A1) Analogue (1-10V) | | | |
| | (50B1680) | 5000K - 1680lm per LED | | (DX) DMX | | | |
| | (56B1680) | 5600K - 1680lm per LED | | (DL) DALI | | | |

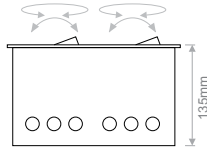
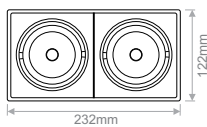
* 5000 & 5600K only available in CRI 70
** CRI 90 only for 2700K & 3000K
***Emergency version upon request

VELA 15



112x112mm

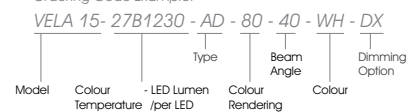
VELA DOUBLE 30



222x112mm

Create your own LED downlight with any possible combination of the above options.

Ordering Code Example:



Available upon request:

✓ Emergency version

LED Downlights
LED Downlights
lightsource by BRIDGELUX

CRATER



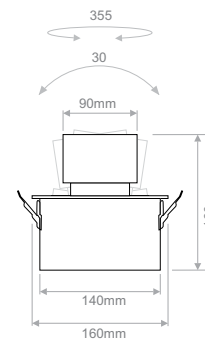
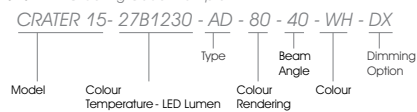
| | | | | | |
|---|---|---------------------------|------------------|------------------|------------------|
| 3 step MacAdam Ellipse Initial | 4 step MacAdam Ellipse Initial | L70/B50 50.000h | Ra ≥70 | Ra ≥80 | Ra ≥90 |
|---|---|---------------------------|------------------|------------------|------------------|



| Model | Colour Temperature - LED Lumen | Type | Colour Rendering | Beam Angle | Colour | Dimming Option*** |
|------------------------------------|--------------------------------|--------------------|------------------|-----------------------|-----------------------|---------------------|
| CRATER 14.7W (CRATER 15) | (27B1230) 2700K - 1230lm | (AD) Adjustable | (70) 70* | (16) 16° | (BL) Black | (00) Without Driver |
| | (30B1340) 3000K - 1340lm | | (80) 80 | (40) 40° | (WH) White | (ND) Non-Dimmable |
| | (35B1420) 3500K - 1420lm | | (90) 90** | | (A0) Analogue (0-10V) | |
| | (40B1500) 4000K - 1500lm | | | (A1) Analogue (1-10V) | | |
| | (50B1680) 5000K - 1680lm | | | (DX) DMX | | |
| | (56B1680) 5600K - 1680lm | | | (DL) DALI | | |

* 5600K only available in CRI 70
** CRI 90 only for 2700K & 3000K
***Emergency version upon request

Create your own LED downlight with any possible combination of the above options. Ordering Code Example:



Available upon request:
✓ Emergency version



fibreLED
LED Lighting Specialists

Contents

LED Downlights

LED Downlights Surface
lightsource by BRIDGELUX

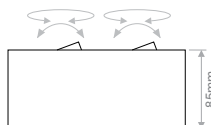
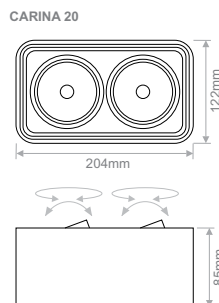
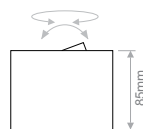
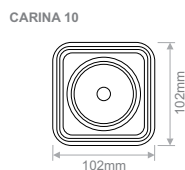
CARINA



| | | | | | |
|---|---|---------------------------|------------------|------------------|------------------|
| 3 step MacAdam Ellipse Initial | 4 step MacAdam Ellipse Initial | L70/B50 50.000h | Ra ≥70 | Ra ≥80 | Ra ≥90 |
|---|---|---------------------------|------------------|------------------|------------------|

| Model | Colour Temperature | - LED Lumen /per LED | Type | Colour Rendering | Beam Angle | Colour*** | Dimming Option |
|---|--------------------|------------------------|--------------------|------------------|------------|----------------------|----------------------|
| CARINA 10.3W <i>(CARINA 10)</i> | (27B0850) | 2700K - 850lm per LED | (AD) Adjustable | (70) 70* | (16) 16° | (WG) White / Grey | (ND) Non-Dimmable |
| | (30B0930) | 3000K - 930lm per LED | | (80) 80 | (28) 28° | | |
| | (35B0980) | 3500K - 980lm per LED | | (90) 90** | (40) 40° | | |
| CARINA 20.6W <i>(CARINA 20)</i> | (40B1040) | 4000K - 1040lm per LED | | | | | |
| | (50B1170) | 5000K - 1170lm per LED | | | | | |
| | (56B1170) | 5600K - 1170lm per LED | | | | | |

* 5600K only available in CRI 70
** CRI 90 only for 2700K & 3000K
***Black/Gold colour available upon request



Create your own LED downlight with any possible combination of the above options.

Ordering Code Example:

CARINA20 - 30B0930 - AD - 90 - 16 - BG - ND

| | | | | | | | |
|-------|--------------------|----------------------|------|------------|------------------|--------|----------------|
| Model | Colour Temperature | - LED Lumen /per LED | Type | Beam Angle | Colour Rendering | Colour | Dimming Option |
|-------|--------------------|----------------------|------|------------|------------------|--------|----------------|

LED Downlights
LED Downlights Surface
lightsource by BRIDGELUX

LYRA

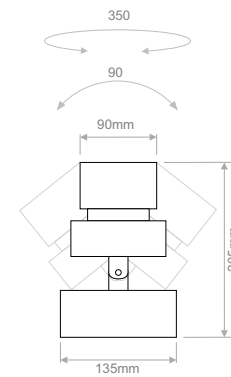
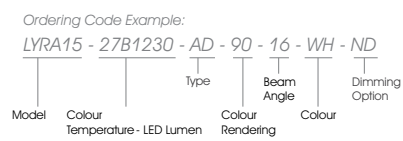


| | | | | | |
|---|---|---------------------------|------------------|------------------|------------------|
| 3 step MacAdam Ellipse Initial | 4 step MacAdam Ellipse Initial | L70/B50 50.000h | Ra ≥70 | Ra ≥80 | Ra ≥90 |
|---|---|---------------------------|------------------|------------------|------------------|

| Model | Colour Temperature - LED Lumen | Type | Colour Rendering | Beam Angle | Colour | Dimming Option |
|-------------------------------|--------------------------------|--------------------|------------------|------------|------------|----------------------|
| LYRA 14.7W (LYRA15) | (27B1230) 2700K - 1230lm | (AD) Adjustable | (70) 70* | (16) 16° | (BL) Black | (ND) Non-Dimmable |
| | (30B1340) 3000K - 1340lm | | (80) 80 | (40) 40° | (WH) White | |
| | (35B1420) 3500K - 1420lm | | (90) 90** | | | |
| | (40B1500) 4000K - 1500lm | | | | | |
| | (50B1680) 5000K - 1680lm | | | | | |
| | (56B1680) 5600K - 1680lm | | | | | |

* 5600K only available in CRI 70
** CRI 90 only for 2700K & 3000K

Create your own LED downlight with any possible combination of the above options.



LED Downlights

LED Downlights Surface
lightsource by BRIDGELUX

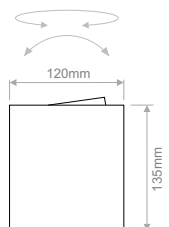
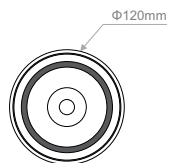
CORONA



| | | | | | |
|--------------------------------------|--------------------------------------|--------------------|-----------|-----------|-----------|
| 3 step MacAdam Ellipse Initial | 4 step MacAdam Ellipse Initial | L70/B50 50.000h | Ra ≥70 | Ra ≥80 | Ra ≥90 |
|--------------------------------------|--------------------------------------|--------------------|-----------|-----------|-----------|

| Model | Colour Temperature | LED Lumen /per LED | Type | Colour Rendering | Beam Angle | Colour | Dimming Option |
|------------------------------------|--------------------|------------------------|--------------------|------------------|------------|------------|----------------------|
| CORONA 10.3W (CORONA 10) | (27B0850) | 2700K - 850lm per LED | (AD) Adjustable | (70) 70* | (24) 24° | (BL) Black | (ND) Non-Dimmable |
| | (30B0930) | 3000K - 930lm per LED | | (80) 80 | (32) 32° | (WH) White | |
| | (35B0980) | 3500K - 980lm per LED | | (90) 90** | (50) 50° | | |
| | (40B1040) | 4000K - 1040lm per LED | | | | | |
| | (50B1170) | 5000K - 1170lm per LED | | | | | |
| | (56B1170) | 5600K - 1170lm per LED | | | | | |

* 5600K only available in CRI 70
** CRI 90 only for 2700K & 3000K



Create your own LED downlight with any possible combination of the above options.

Ordering Code Example:
CORONA 10 - 27B0850 - AD - 90 - 50 - WH - ND

Model Colour Temperature - LED Lumen Type Beam Angle Colour Dimming Option



LED Downlights
LED Downlights Surface
lightsource by BRIDGELUX

LACERTA



| | | | | | |
|---|---|---------------------------|------------------|------------------|------------------|
| 3 step MacAdam Ellipse Initial | 4 step MacAdam Ellipse Initial | L70/B50 50.000h | Ra ≥70 | Ra ≥80 | Ra ≥90 |
|---|---|---------------------------|------------------|------------------|------------------|



| Model | Colour Temperature - LED Lumen | Type | Colour Rendering | Beam Angle | Colour | Dimming Option |
|--------------------------------------|--------------------------------|--------------------|------------------|------------|-----------------------|----------------------|
| LACERTA 10.3W (LACERTA 10) | (27B0850) 2700K - 850lm | (AD) Adjustable | (70) 70* | (16) 16° | [WB] White / Black | (ND) Non-Dimmable |
| | (30B0930) 3000K - 930lm | | (80) 80 | (28) 28° | | |
| | (35B0980) 3500K - 980lm | | (90) 90** | (40) 40° | | |
| | (40B1040) 4000K - 1040lm | | | | | |
| | (50B1170) 5000K - 1170lm | | | | | |
| | (56B1170) 5600K - 1170lm | | | | | |

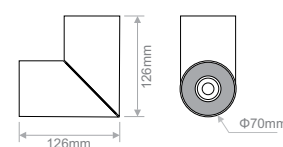
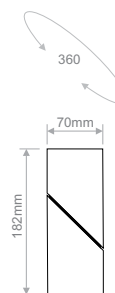
* 5600K only available in CRI 70
** CRI 90 only for 2700K & 3000K

Create your own LED downlight with any possible combination of the above options.

Ordering Code Example:

LACERTA 10 - 27B0850 - AD - 70 - 40 - WB - ND

Model Colour Temperature - LED Lumen Type Beam Angle Colour Dimming Option



LED Downlights
LED Downlights Surface
lightsource by BRIDGELUX

AURIGA

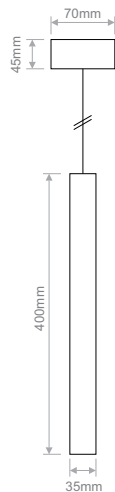


| | | | | | |
|---|---|---------------------------|------------------|------------------|------------------|
| 3 step MacAdam Ellipse Initial | 4 step MacAdam Ellipse Initial | L70/B50 50.000h | Ra ≥70 | Ra ≥80 | Ra ≥90 |
|---|---|---------------------------|------------------|------------------|------------------|



| Model | Colour Temperature - LED Lumen | Type | Colour Rendering | Beam Angle | Colour | Dimming Option |
|-----------------------------------|--------------------------------|---------------|------------------|------------|------------|-------------------|
| AURIGA 6.4W (AURIGA 06) | (27B0505) 2700K - 505lm | (FX) Fixed | (70) 70* | (33) 33° | (WH) White | (ND) Non-Dimmable |
| | (30B0550) 3000K - 550lm | | (80) 80 | (47) 47° | | |
| | (40B0590) 4000K - 590lm | | (90) 90** | (65) 65° | | |
| | (56B0685) 5600K - 685lm | | | | | |

* 5600K only available in CRI 70
** CRI 90 only for 2700K & 3000K



Create your own LED downlight with any possible combination of the above options.

Ordering Code Example:

| | | | | | | | | | | | | |
|-----------|--------------------------------|------------------|------|------------|--------|------------------|--------|----------------|---|----|---|----|
| AURIGA 06 | - | 30B0550 | - | FX | - | 90 | - | 65 | - | WH | - | ND |
| Model | Colour Temperature - LED Lumen | Colour Rendering | Type | Beam Angle | Colour | Colour Rendering | Colour | Dimming Option | | | | |



LED Downlights
LED Downlights Surface
lightsource by BRIDGELUX

BRUCIA



| | | | | | |
|---|---|---------------------------|------------------|------------------|------------------|
| 3 step MacAdam Ellipse Initial | 4 step MacAdam Ellipse Initial | L70/B50 50.000h | Ra ≥70 | Ra ≥80 | Ra ≥90 |
|---|---|---------------------------|------------------|------------------|------------------|

| Model | Colour Temperature - LED Lumen | Type | Colour Rendering | Beam Angle | Colour*** | Dimming Option |
|--------------------------------------|--|---------------|------------------|------------|------------------------|----------------------|
| BRUCIA L10.3W (BRUCIA L10) | (27B0850) 2700K - 850lm (30B0930) 3000K - 930lm | [FX] Fixed | (70) 70* | (16) 16° | [BO] Black / Orange | [ND] Non-Dimmable |
| BRUCIA M10.3W (BRUCIA M10) | (35B0980) 3500K - 980lm (40B1040) 4000K - 1040lm | | (80) 80 | (28) 28° | | |
| BRUCIA S10.3W (BRUCIA S10) | (50B1170) 5000K - 1170lm (56B1170) 5600K - 1170lm | | (90) 90** | (40) 40° | | |

* 5600K only available in CRI 70

** CRI 90 only for 2700K & 3000K

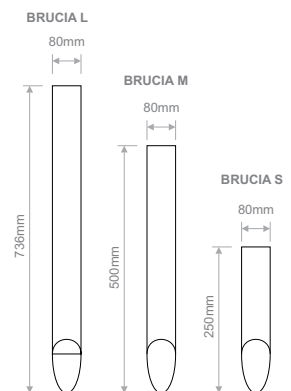
***White/Black & Black/White available upon request

Create your own LED downlight with any possible combination of the above options.

Ordering Code Example:

BRUCIA S10 - 50B1170 - FX - 80 - 40 - BO - ND

Model Colour Temperature - LED Lumen Type Beam Angle Colour Dimming Option



LED Downlights

LED Downlights
lightsource by BRIDGELUX

DIAS



- Supplied with non-dimmable drivers as standard.
- Emergency version upon request.
- Dimmable options.

| | | | | | |
|---|---|---------------------------|------------------|------------------|------------------|
| 3 step MacAdam Ellipse Initial | 4 step MacAdam Ellipse Initial | L70/B50 50.000h | Ra ≥70 | Ra ≥80 | Ra ≥90 |
|---|---|---------------------------|------------------|------------------|------------------|

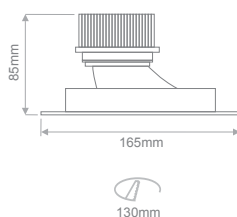
| Model | Colour Temperature - LED Lumen | Type | Colour Rendering | Beam Angle | Colour | Dimming Option*** |
|--------------------------------|--------------------------------|---------------|----------------------------------|----------------------------|-----------------------|---------------------|
| DIAS 10.3W (DIAS 10) | (27B0850) 2700K - 850lm | (FX) Fixed | (70) 70* (80) 80 (90) 90** | (AS) Asymmetric Wash | (AL) Aluminium | (00) Without Driver |
| | (30B0930) 3000K - 930lm | | | | (ND) Non-Dimmable | |
| | (35B0980) 3500K - 980lm | | | | (A0) Analogue (0-10V) | |
| | (40B1040) 4000K - 1040lm | | | | (A1) Analogue (1-10V) | |
| | (50B1170) 5000K - 1170lm | | | | (DX) DMX | |
| | (56B1170) 5600K - 1170lm | | | | (DL) DALI | |

* 5000 & 5600K only available in CRI 70
** CRI 90 only for 2700K & 3000K
***Emergency version upon request



| | | | | | | |
|--------------------------------|--------------------------|---------------|----------------------------------|----------------------------|-----------------------|---------------------|
| DIAS 14.7W (DIAS 15) | (27B1230) 2700K - 1230lm | (FX) Fixed | (70) 70* (80) 80 (90) 90** | (AS) Asymmetric Wash | (AL) Aluminium | (00) Without Driver |
| | (30B1340) 3000K - 1340lm | | | | (ND) Non-Dimmable | |
| | (35B1420) 3500K - 1420lm | | | | (A0) Analogue (0-10V) | |
| | (40B1500) 4000K - 1500lm | | | | (A1) Analogue (1-10V) | |
| | (50B1680) 5000K - 1680lm | | | | (DX) DMX | |
| | (56B1680) 5600K - 1680lm | | | | (DL) DALI | |

* 5000 & 5600K only available in CRI 70
** CRI 90 only for 2700K & 3000K
***Emergency version upon request



Create your own LED downlight with any possible combination of the above options.

Ordering Code Example:

DIAS 10 - 56B1170 - FX - 70 - AS - BL - DX

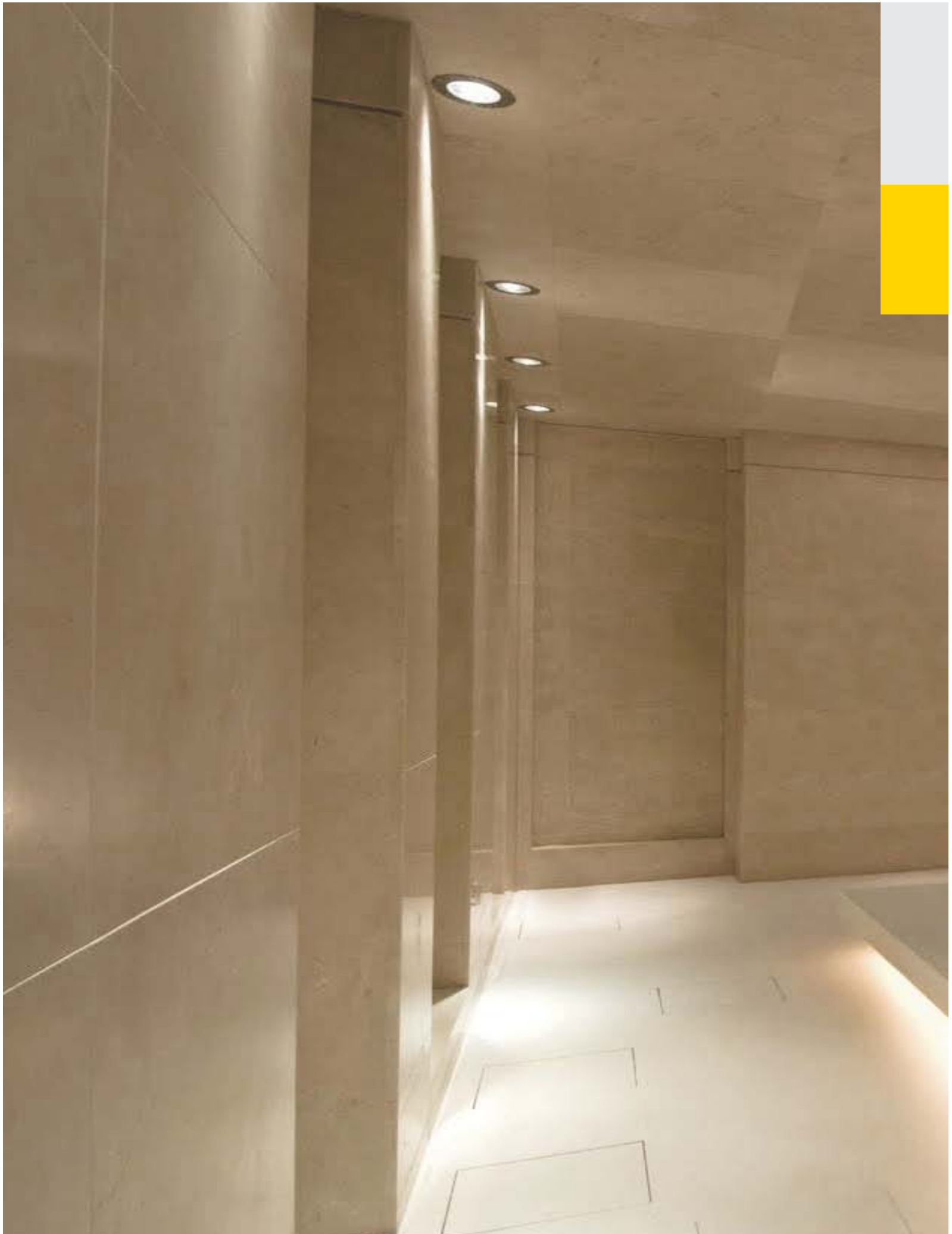
Model Colour Temperature - Lumen LED Type Beam Angle Colour Dimming Option

Available upon request:

✓ Emergency version

Contents

fibrelLED
LED Lighting Specialists



[Contents](#)

LED Downlights

LED Downlights
lightsource by BRIDGELUX

MARS ADJUSTABLE

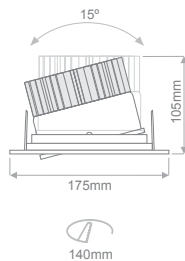


- High efficiency deep reflector with clear cover glass.
- Supplied with non-dimmable drivers as standard.
- Emergency version upon request.
- Dimmable options.

| | | | | | |
|---|---|---------------------------|------------------|------------------|------------------|
| 3 step MacAdam Ellipse Initial | 4 step MacAdam Ellipse Initial | L70/B50 50.000h | Ra ≥70 | Ra ≥80 | Ra ≥90 |
|---|---|---------------------------|------------------|------------------|------------------|

| Model | Colour Temperature - LED Lumen | Type | Colour Rendering | Beam Angle | Colour | Dimming Option*** |
|-----------------------------------|--------------------------------|--------------------|------------------|------------|------------|-----------------------|
| MARS A 10.3W (MARS A10) | (27B0850) 2700K - 850lm | (AD) Adjustable | (70) 70* | (10) 10° | (WH) White | (00) Without Driver |
| | (30B0930) 3000K - 930lm | | (80) 80 | (30) 30° | (BL) Black | (ND) Non-Dimmable |
| | (35B0980) 3500K - 980lm | | (90) 90** | (45) 45° | (GR) Grey | (AO) Analogue (0-10V) |
| | (40B1040) 4000K - 1040lm | | | | | (A1) Analogue (1-10V) |
| | (50B1170) 5000K - 1170lm | | | | | (DX) DMX |
| | (56B1170) 5600K - 1170lm | | | | | (DL) DALI |

* 5000 & 5600K only available in CRI 70
** CRI 90 only for 2700K & 3000K
***Emergency version upon request



| | | | | | | |
|-----------------------------------|--------------------------|--------------------|-----------|----------|------------|-----------------------|
| MARS A 14.7W (MARS A15) | (27B1230) 2700K - 1230lm | (AD) Adjustable | (70) 70* | (10) 10° | (WH) White | (00) Without Driver |
| | (30B1340) 3000K - 1340lm | | (80) 80 | (30) 30° | (BL) Black | (ND) Non-Dimmable |
| | (35B1420) 3500K - 1420lm | | (90) 90** | (45) 45° | (GR) Grey | (AO) Analogue (0-10V) |
| | (40B1500) 4000K - 1500lm | | | | | (A1) Analogue (1-10V) |
| | (50B1680) 5000K - 1680lm | | | | | (DX) DMX |
| | (56B1680) 5600K - 1680lm | | | | | (DL) DALI |

* 5000 & 5600K only available in CRI 70
** CRI 90 only for 2700K & 3000K
***Emergency version upon request

Create your own LED downlight with any possible combination of the above options. Ordering Code Example:

MARS A10 - 56B1170 - AD - 70 - 30 - BL - DX

Model Colour Temperature - Lumen LED Lumen Colour Rendering Colour Dimming Option

Available upon request:

✓ Emergency version

LED Downlights
LED Downlights
lightsource by BRIDGELUX

MARS



- High efficiency deep reflector with clear cover glass.
- Supplied with non-dimmable drivers as standard.
- Emergency version upon request.
- Dimmable options.

| | | | | | |
|---|---|---------------------------|------------------|------------------|------------------|
| 3 step MacAdam Ellipse Initial | 4 step MacAdam Ellipse Initial | L70/B50 50.000h | Ra ≥70 | Ra ≥80 | Ra ≥90 |
|---|---|---------------------------|------------------|------------------|------------------|

| Model | Colour Temperature - LED Lumen | Type | Colour Rendering | Beam Angle | Colour | Dimming Option*** |
|---------------------------------------|--------------------------------|------------|------------------|------------|------------|-----------------------|
| MARS 10.3W <i>(MARS 10)</i> | [27B0850] 2700K - 850lm | (FX) Fixed | [70] 70* | [10] 10° | [WH] White | [00] Without Driver |
| | [30B0930] 3000K - 930lm | | [80] 80 | [30] 30° | [BL] Black | [ND] Non-Dimmable |
| | [35B0980] 3500K - 980lm | | [90] 90** | [45] 45° | [GR] Grey | [AO] Analogue (0-10V) |
| | [40B1040] 4000K - 1040lm | | | | | [A1] Analogue (1-10V) |
| | [50B1170] 5000K - 1170lm | | | | | [DX] DMX |
| | [56B1170] 5600K - 1170lm | | | | | [DL] DALI |

* 5000 & 5600K only available in CRI 70
** CRI 90 only for 2700K & 3000K
***Emergency version upon request

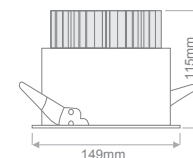
| | | | | | | |
|---------------------------------------|--------------------------|------------|-----------|----------|------------|-----------------------|
| MARS 14.7W <i>(MARS 15)</i> | [27B1230] 2700K - 1230lm | (FX) Fixed | [70] 70* | [10] 10° | [WH] White | [00] Without Driver |
| | [30B1340] 3000K - 1340lm | | [80] 80 | [30] 30° | [BL] Black | [ND] Non-Dimmable |
| | [35B1420] 3500K - 1420lm | | [90] 90** | [45] 45° | [GR] Grey | [AO] Analogue (0-10V) |
| | [40B1500] 4000K - 1500lm | | | | | [A1] Analogue (1-10V) |
| | [50B1680] 5000K - 1680lm | | | | | [DX] DMX |
| | [56B1680] 5600K - 1680lm | | | | | [DL] DALI |

* 5000 & 5600K only available in CRI 70
** CRI 90 only for 2700K & 3000K
***Emergency version upon request



Create your own LED downlight with any possible combination of the above options.

Ordering Code Example:
MARS 10 - 56B1170 - FX - 70 - 10 - BL - DX
Model Colour Temperature - Lumen Type Beam Angle Colour Dimming Option



Available upon request:

✓ Emergency version

Contents

fibrelED
LED Lighting Specialists

LED Downlights

LED Downlights
lightsource by BRIDGELUX

MARS
SQUARE



- High efficiency deep reflector.
- Supplied with non-dimmable drivers as standard.
- Emergency version upon request.
- Dimmable options.

| | | | | | |
|---|---|---------------------------|------------------|------------------|------------------|
| 3 step MacAdam Ellipse Initial | 4 step MacAdam Ellipse Initial | L70/B50 50.000h | Ra ≥70 | Ra ≥80 | Ra ≥90 |
|---|---|---------------------------|------------------|------------------|------------------|

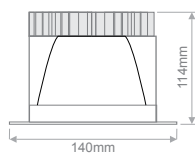
| Model | Colour Temperature - LED Lumen | Type | Colour Rendering | Beam Angle | Colour | Dimming Option*** |
|-------------------------------------|--------------------------------|------------|------------------|------------|------------|-----------------------|
| MARS SQ 10.3W (MARS SQ10) | (27B0850) 2700K - 850lm | (FX) Fixed | (70) 70* | (10) 10° | (WH) White | (00) Without Driver |
| | (30B0930) 3000K - 930lm | | (80) 80 | (30) 30° | (BL) Black | (ND) Non-Dimmable |
| | (35B0980) 3500K - 980lm | | (90) 90** | (45) 45° | (GR) Grey | (AO) Analogue (0-10V) |
| | (40B1040) 4000K - 1040lm | | | | | (A1) Analogue (1-10V) |
| | (50B1170) 5000K - 1170lm | | | | | (DX) DMX |
| | (56B1170) 5600K - 1170lm | | | | | (DL) DALI |

* 5000 & 5600K only available in CRI 70
** CRI 90 only for 2700K & 3000K
***Emergency version upon request



| | | | | | | |
|-------------------------------------|--------------------------|------------|-----------|----------|------------|-----------------------|
| MARS SQ 14.7W (MARS SQ15) | (27B1230) 2700K - 1230lm | (FX) Fixed | (70) 70* | (10) 10° | (WH) White | (00) Without Driver |
| | (30B1340) 3000K - 1340lm | | (80) 80 | (30) 30° | (BL) Black | (ND) Non-Dimmable |
| | (35B1420) 3500K - 1420lm | | (90) 90** | (45) 45° | (GR) Grey | (AO) Analogue (0-10V) |
| | (40B1500) 4000K - 1500lm | | | | | (A1) Analogue (1-10V) |
| | (50B1680) 5000K - 1680lm | | | | | (DX) DMX |
| | (56B1680) 5600K - 1680lm | | | | | (DL) DALI |

* 5000 & 5600K only available in CRI 70
** CRI 90 only for 2700K & 3000K
***Emergency version upon request



123x123mm

Create your own LED downlight with any possible combination of the above options.

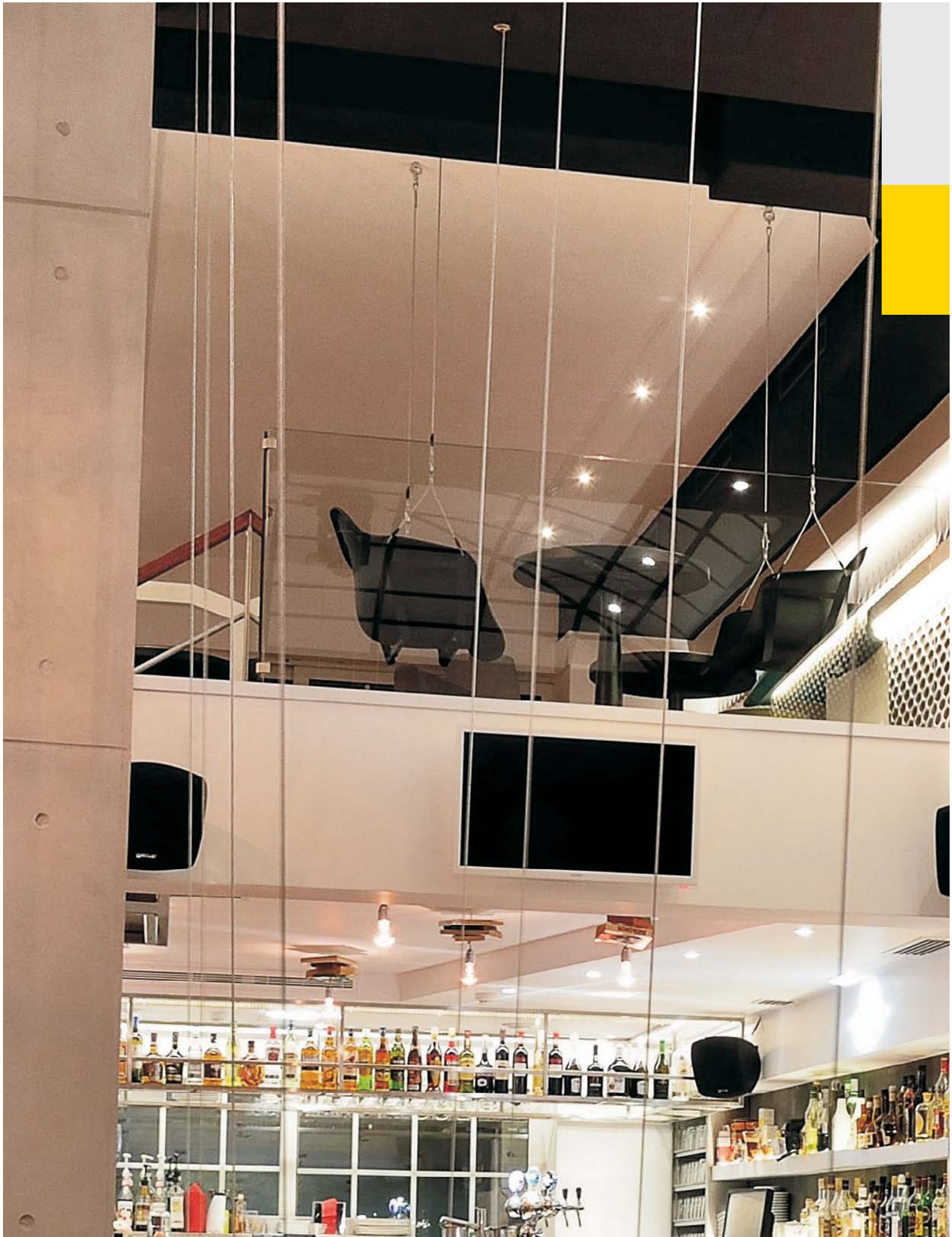
Ordering Code Example:

MARS SQ 10 - 56B1170 - FX - 70 - 10 - BL - DX

Model Colour Temperature - Lumen LED Type Beam Angle Colour Dimming Option

Available upon request:

✓ Emergency version



Contents

LED Downlights

LED Downlights
lightsource by BRIDGELUX

URANUS
ADJUSTABLE



- High efficiency deep reflector with clear cover glass.
- Supplied with non-dimmable drivers as standard.
- Emergency version upon request.
- Dimmable options.

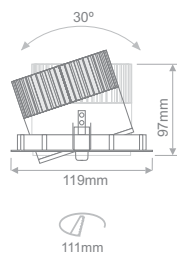
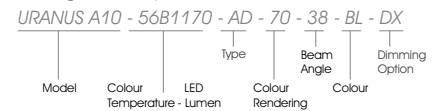
| | | | | | |
|---|---|---------------------------|------------------|------------------|------------------|
| 3 step MacAdam Ellipse Initial | 4 step MacAdam Ellipse Initial | L70/B50 50,000h | Ra ≥70 | Ra ≥80 | Ra ≥90 |
|---|---|---------------------------|------------------|------------------|------------------|

| Model | Colour Temperature - LED Lumen | Type | Colour Rendering | Beam Angle | Colour | Dimming Option*** |
|--------------------------------------|--------------------------------|--------------------|------------------|------------|------------|-----------------------|
| URANUS A10.3W (URANUS A10) | (27B0850) 2700K - 850lm | (AD) Adjustable | (70) 70* | (16) 16° | (WH) White | (00) Without Driver |
| | (30B0930) 3000K - 930lm | | (80) 80 | (38) 38° | (BL) Black | (ND) Non-Dimmable |
| | (35B0980) 3500K - 980lm | | (90) 90** | (45) 45° | (GR) Grey | (AD) Analogue (0-10V) |
| | (40B1040) 4000K - 1040lm | | | | | (A1) Analogue (1-10V) |
| | (50B1170) 5000K - 1170lm | | | | | (DX) DMX |
| | (56B1170) 5600K - 1170lm | | | | | (DL) DALI |

* 5000 & 5600K only available in CRI 70
** CRI 90 only for 2700K & 3000K
***Emergency version upon request

Create your own LED downlight with any possible combination of the above options.

Ordering Code Example:



Available upon request:
✓ Emergency version

LED Downlights

LED Downlights
lightsource by BRIDGELUX

URANUS



BRIDGELUX

- High efficiency deep reflector with clear cover glass.
- Supplied with non-dimmable drivers as standard.
- Emergency version upon request.
- Dimmable options.

| | | | | | |
|---|---|---------------------------|------------------|------------------|------------------|
| 3 step MacAdam Ellipse Initial | 4 step MacAdam Ellipse Initial | L70/B50 50.000h | Ra ≥70 | Ra ≥80 | Ra ≥90 |
|---|---|---------------------------|------------------|------------------|------------------|

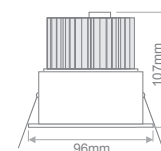
| Model | Colour Temperature - LED Lumen | Type | Colour Rendering | Beam Angle | Colour | Dimming Option*** |
|------------------------------------|--------------------------------|------------|----------------------------------|----------------------------------|---------------------------------------|-----------------------|
| URANUS 10.3W (URANUS 10) | (27B0850) 2700K - 850lm | (FX) Fixed | [70] 70* [80] 80 [90] 90** | [16] 16° [38] 38° [45] 45° | [WH] White [BL] Black [GR] Grey | [00] Without Driver |
| | (30B0930) 3000K - 930lm | | | | | [ND] Non-Dimmable |
| | (35B0980) 3500K - 980lm | | | | | [A0] Analogue (0-10V) |
| | (40B1040) 4000K - 1040lm | | | | | [A1] Analogue (1-10V) |
| | (50B1170) 5000K - 1170lm | | | | | [DX] DMX |
| | (56B1170) 5600K - 1170lm | | | | | [DL] DALI |

* 5000 & 5600K only available in CRI 70
** CRI 90 only for 2700K & 3000K
***Emergency version upon request

Create your own LED downlight with any possible combination of the above options.

Ordering Code Example:

| | | | | | | | | | | | | |
|-----------|----------------------------|---------|------------------|------|--------|------------|--------|------------|--------|----------------|---|----|
| URANUS 10 | - | 56B1170 | - | FX | - | 70 | - | 45 | - | BL | - | DX |
| Model | Colour Temperature - Lumen | LED | Colour Rendering | Type | Colour | Beam Angle | Colour | Beam Angle | Colour | Dimming Option | | |



84mm

Available upon request:

✓ Emergency version

Contents

fibrelED
LED Lighting Specialists



Contents

LED Downlights

LED Downlights
lightsource by BRIDGELUX

KIRA



- High efficiency deep reflector.
- Supplied with non-dimmable drivers as standard.
- Emergency version upon request.
- Dimmable options.

| | | | | | |
|---|---|---------------------------|------------------|------------------|------------------|
| 3 step MacAdam Ellipse Initial | 4 step MacAdam Ellipse Initial | L70/B50 50.000h | Ra ≥70 | Ra ≥80 | Ra ≥90 |
|---|---|---------------------------|------------------|------------------|------------------|

| Model | Colour Temperature - LED Lumen | Type | Colour Rendering | Beam Angle | Colour | Dimming Option*** |
|-------------------------------|--------------------------------|-----------------|------------------|------------|------------|-----------------------|
| KIRA 6.4W (KIRA 06) | (27B0505) 2700K - 505lm | (AD) Adjustable | (70) 70* | (16) 16° | (WH) White | (00) Without Driver |
| | (30B0550) 3000K - 550lm | | (80) 80 | (42) 42° | (BL) Black | (ND) Non-Dimmable |
| | (40B0590) 4000K - 590lm | | (90) 90** | (56) 56° | (GR) Grey | (A0) Analogue (0-10V) |
| | (56B0685) 5600K - 685lm | | | | | (A1) Analogue (1-10V) |
| | | | | | | (DX) DMX |
| | | | | | | (DL) DALI |

* 5600K only available in CRI 70
** CRI 90 only for 2700K & 3000K
***Emergency version upon request

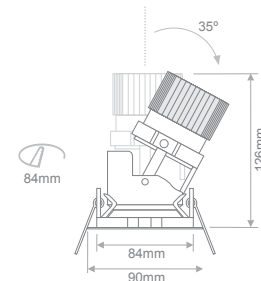
| | | | | | | |
|-------------------------------|--------------------------|-----------------|-----------|----------|------------|-----------------------|
| KIRA 9.6W (KIRA 09) | (27B0740) 2700K - 740lm | (AD) Adjustable | (70) 70* | (16) 16° | (WH) White | (00) Without Driver |
| | (30B0800) 3000K - 800lm | | (80) 80 | (42) 42° | (BL) Black | (ND) Non-Dimmable |
| | (40B0895) 4000K - 895lm | | (90) 90** | (56) 56° | (GR) Grey | (A0) Analogue (0-10V) |
| | (50B1000) 5000K - 1000lm | | | | | (A1) Analogue (1-10V) |
| | (56B1000) 5600K - 1000lm | | | | | (DX) DMX |
| | | | | | (DL) DALI | |

* 5000 & 5600K only available in CRI 70
** CRI 90 only for 2700K & 3000K
***Emergency version upon request

Create your own LED downlight with any possible combination of the above options.

Ordering Code Example:

| | | | | | | | | | | | | |
|---------|---|----------------------------|---|------|---|------------------|---|------------|---|--------|---|----------------|
| KIRA 06 | - | 27B0505 | - | AD | - | 90 | - | 42 | - | BL | - | DX |
| Model | | Colour Temperature - Lumen | | Type | | Colour Rendering | | Beam Angle | | Colour | | Dimming Option |



Available upon request:

✓ Emergency version

Contents

fibreLED
LED Lighting Specialists

LED Downlights

LED Downlights
lightsource by BRIDGELUX

BORA



- High efficiency deep reflector.
- Supplied with non-dimmable drivers as standard.
- Emergency version upon request.
- Dimmable options.

| | | | | | |
|---|---|---------------------------|------------------|------------------|------------------|
| 3 step MacAdam Ellipse Initial | 4 step MacAdam Ellipse Initial | L70/B50 50.000h | Ra ≥70 | Ra ≥80 | Ra ≥90 |
|---|---|---------------------------|------------------|------------------|------------------|

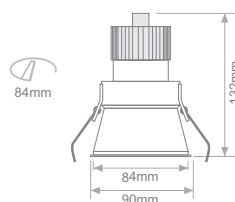
| Model | Colour Temperature - LED Lumen | Type | Colour Rendering | Beam Angle | Colour | Dimming Option*** |
|-------------------------------|--------------------------------|------------|------------------|------------|------------|-----------------------|
| BORA 6.4W (BORA 06) | (27B0505) 2700K - 505lm | (FX) Fixed | (70) 70* | (16) 16° | (WH) White | (00) Without Driver |
| | (30B0550) 3000K - 550lm | | (80) 80 | (42) 42° | (BL) Black | (ND) Non-Dimmable |
| | (40B0590) 4000K - 590lm | | (90) 90** | (56) 56° | (GR) Grey | (A0) Analogue (0-10V) |
| | (56B0685) 5600K - 685lm | | | | | (A1) Analogue (1-10V) |
| | | | | | | (DX) DMX |
| | | | | | (DL) DALI | |

* 5600K only available in CRI 70
** CRI 90 only for 2700K & 3000K
***Emergency version upon request



| | | | | | | |
|-------------------------------|--------------------------|------------|-----------|----------|------------|-----------------------|
| BORA 9.6W (BORA 09) | (27B0740) 2700K - 740lm | (FX) Fixed | (70) 70* | (16) 16° | (WH) White | (00) Without Driver |
| | (30B0800) 3000K - 800lm | | (80) 80 | (42) 42° | (BL) Black | (ND) Non-Dimmable |
| | (40B0895) 4000K - 895lm | | (90) 90** | (56) 56° | (GR) Grey | (A0) Analogue (0-10V) |
| | (50B1000) 5000K - 1000lm | | | | | (A1) Analogue (1-10V) |
| | (56B1000) 5600K - 1000lm | | | | | (DX) DMX |
| | | | | | (DL) DALI | |

* 5000 & 5600K only available in CRI 70
** CRI 90 only for 2700K & 3000K
***Emergency version upon request



Create your own LED downlight with any possible combination of the above options.

Ordering Code Example:

BORA 06 - 27B0505 - FX - 90 - 42 - WH - DX

Model Colour LED Type Beam Colour Dimming
Temperature - Lumen Rendering Angle Colour Option

Available upon request:

✓ Emergency version

Contents

fibrelED
LED Lighting Specialists

LED Downlights

LED Downlights
lightsource by BRIDGELUX

ZIBRA



- High efficiency deep reflector.
- Supplied with non-dimmable drivers as standard.
- Emergency version upon request.
- Dimmable options.

| | | | | | |
|---|---|---------------------------|------------------|------------------|------------------|
| 3 step MacAdam Ellipse Initial | 4 step MacAdam Ellipse Initial | L70/B50 50.000h | Ra ≥70 | Ra ≥80 | Ra ≥90 |
|---|---|---------------------------|------------------|------------------|------------------|

| Model | Colour Temperature - LED Lumen | Type | Colour Rendering | Beam Angle | Colour | Dimming Option*** |
|---------------------------------|--------------------------------|--------------------|------------------|------------|------------|-----------------------|
| ZIBRA 6.4W (ZIBRA 06) | (27B0505) 2700K - 505lm | (AD) Adjustable | (70) 70* | (16) 16° | (WH) White | (00) Without Driver |
| | (30B0550) 3000K - 550lm | | (80) 80 | (42) 42° | (BL) Black | (ND) Non-Dimmable |
| | (40B0590) 4000K - 590lm | | (90) 90** | (56) 56° | (GR) Grey | (AO) Analogue (0-10V) |
| | (56B0685) 5600K - 685lm | | | | | (A1) Analogue (1-10V) |
| | | | | | | (DX) DMX |
| | | | | | (DL) DALI | |

* 5600K only available in CRI 70
** CRI 90 only for 2700K & 3000K
***Emergency version upon request

| | | | | | | |
|---------------------------------|--------------------------|--------------------|-----------|----------|------------|-----------------------|
| ZIBRA 9.6W (ZIBRA 09) | (27B0740) 2700K - 740lm | (AD) Adjustable | (70) 70* | (16) 16° | (WH) White | (00) Without Driver |
| | (30B0800) 3000K - 800lm | | (80) 80 | (42) 42° | (BL) Black | (ND) Non-Dimmable |
| | (40B0895) 4000K - 895lm | | (90) 90** | (56) 56° | (GR) Grey | (AO) Analogue (0-10V) |
| | (50B1000) 5000K - 1000lm | | | | | (A1) Analogue (1-10V) |
| | (56B1000) 5600K - 1000lm | | | | | (DX) DMX |
| | | | | | (DL) DALI | |

* 5000 & 5600K only available in CRI 70
** CRI 90 only for 2700K & 3000K
***Emergency version upon request

Create your own LED downlight with any possible combination of the above options.

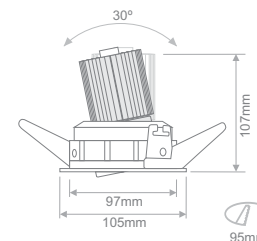
Ordering Code Example:

ZIBRA 06 - 27B0505 - AD - 90 - 42 - WH - ND

Model Colour Temperature - Lumen Type Beam Angle Colour Dimming Option

Available upon request:

✓ Emergency version



LED Downlights

LED Downlights
lightsource by BRIDGELUX

ELISE



- High efficiency deep reflector with clear cover glass.
- Supplied with non-dimmable drivers as standard.
- Emergency version upon request.
- Dimmable options.

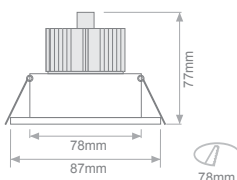
| | | | | | |
|---|---|---------------------------|------------------|------------------|------------------|
| 3 step MacAdam Ellipse Initial | 4 step MacAdam Ellipse Initial | L70/B50 50.000h | Ra ≥70 | Ra ≥80 | Ra ≥90 |
|---|---|---------------------------|------------------|------------------|------------------|

| Model | Colour Temperature - LED Lumen | Type | Colour Rendering | Beam Angle | Colour | Dimming Option*** |
|---------------------------------|--------------------------------|------------|------------------|------------|------------|-----------------------|
| ELISE 6.4W (ELISE 06) | (27B0505) 2700K - 505lm | (FX) Fixed | (70) 70* | (16) 16° | (WH) White | (00) Without Driver |
| | (30B0550) 3000K - 550lm | | (80) 80 | (42) 42° | (BL) Black | (ND) Non-Dimmable |
| | (40B0590) 4000K - 590lm | | (90) 90** | (56) 56° | (GR) Grey | (A0) Analogue (0-10V) |
| | (56B0685) 5600K - 685lm | | | | | (A1) Analogue (1-10V) |
| | | | | | | (DX) DMX |
| | | | | | | (DL) DALI |

* 5600K only available in CRI 70
** CRI 90 only for 2700K & 3000K
***Emergency version upon request

| | | | | | | |
|---------------------------------|--------------------------|------------|-----------|----------|------------|-----------------------|
| ELISE 9.6W (ELISE 09) | (27B0740) 2700K - 740lm | (FX) Fixed | (70) 70* | (16) 16° | (WH) White | (00) Without Driver |
| | (30B0800) 3000K - 800lm | | (80) 80 | (42) 42° | (BL) Black | (ND) Non-Dimmable |
| | (40B0895) 4000K - 895lm | | (90) 90** | (56) 56° | (GR) Grey | (A0) Analogue (0-10V) |
| | (50B1000) 5000K - 1000lm | | | | | (A1) Analogue (1-10V) |
| | (56B1000) 5600K - 1000lm | | | | | (DX) DMX |
| | | | | | | (DL) DALI |

* 5000 & 5600K only available in CRI 70
** CRI 90 only for 2700K & 3000K
***Emergency version upon request



Create your own LED downlight with any possible combination of the above options.

Ordering Code Example:

ELISE 06 - 27B0505 - FX - 90 - 42 - WH - DX
 Model Colour LED Type Beam Dimming
 Temperature - Lumen Rendering Angle Colour Option

Available upon request:

✓ Emergency version



LED Downlights

LED Downlights
lightsource by BRIDGELUX

BORRELY ROUND



- High efficiency deep reflector with clear cover glass.
- Supplied with non-dimmable drivers as standard.
- Emergency version upon request.
- Dimmable options.

| | | | | | |
|---|---|---------------------------|------------------|------------------|------------------|
| 3 step MacAdam Ellipse Initial | 4 step MacAdam Ellipse Initial | L70/B50 50.000h | Ra ≥70 | Ra ≥80 | Ra ≥90 |
|---|---|---------------------------|------------------|------------------|------------------|

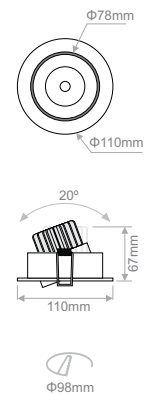
| Model | Colour Temperature - LED Lumen | Type | Colour Rendering | Beam Angle | Colour | Dimming Option*** |
|--|--------------------------------|--------------------|------------------|------------|------------|-----------------------|
| BORRELY ROUND 6.4W (BORRELY R06) | (27B0505) 2700K - 505lm | (AD) Adjustable | (70) 70* | (38) 38° | (WH) White | (00) Without Driver |
| | (30B0550) 3000K - 550lm | | (80) 80 | | | (ND) Non-Dimmable |
| | (40B0590) 4000K - 590lm | | (90) 90** | | | (A0) Analogue (0-10V) |
| | (56B0685) 5600K - 685lm | | | | | (A1) Analogue (1-10V) |
| | | | | | | (DX) DMX |
| | | | | | (DL) DALI | |

* 5600K only available in CRI 70
** CRI 90 only for 2700K & 3000K
***Emergency version upon request



| | | | | | | |
|--|--------------------------|--------------------|-----------|----------|------------|-----------------------|
| BORRELY ROUND 9.6W (BORRELY R09) | (27B0740) 2700K - 740lm | (AD) Adjustable | (70) 70* | (38) 38° | (WH) White | (00) Without Driver |
| | (30B0800) 3000K - 800lm | | (80) 80 | | | (ND) Non-Dimmable |
| | (40B0895) 4000K - 895lm | | (90) 90** | | | (A0) Analogue (0-10V) |
| | (50B1000) 5000K - 1000lm | | | | | (A1) Analogue (1-10V) |
| | (56B1000) 5600K - 1000lm | | | | | (DX) DMX |
| | | | | | (DL) DALI | |

* 5000 & 5600K only available in CRI 70
** CRI 90 only for 2700K & 3000K
***Emergency version upon request



Create your own LED downlight with any possible combination of the above options.

Ordering Code Example:

BORRELY R06 - 27B0505 - AD - 90 - 38 - WH - ND

Model Colour Temperature - Lumen LED Lumen Colour Rendering Colour Beam Angle Dimming Option

Available upon request:

✓ Emergency version

LED Downlights
LED Downlights
lightsource by BRIDGELUX

BORRELY SQUARE



- High efficiency deep reflector with clear cover glass.
- Supplied with non-dimmable drivers as standard.
- Emergency version upon request.
- Dimmable options.

| | | | | | |
|---|---|---------------------------|------------------|------------------|------------------|
| 3 step MacAdam Ellipse Initial | 4 step MacAdam Ellipse Initial | L70/B50 50,000h | Ra ≥70 | Ra ≥80 | Ra ≥90 |
|---|---|---------------------------|------------------|------------------|------------------|

| Model | Colour Temperature - LED Lumen | Type | Colour Rendering | Beam Angle | Colour | Dimming Option*** |
|---|--------------------------------|--------------------|------------------|------------|------------|-----------------------|
| BORRELY SQUARE 6.4W (BORRELY S06) | (27B0505) 2700K - 505lm | (AD) Adjustable | (70) 70* | (38) 38° | (WH) White | (00) Without Driver |
| | (30B0550) 3000K - 550lm | | (80) 80 | | | (ND) Non-Dimmable |
| | (40B0590) 4000K - 590lm | | (90) 90** | | | (A0) Analogue (0-10V) |
| | (56B0685) 5600K - 685lm | | | | | (A1) Analogue (1-10V) |
| | | | | | | (DX) DMX |
| | | | | | | (DL) DALI |

* 5600K only available in CRI 70
** CRI 90 only for 2700K & 3000K
***Emergency version upon request

| | | | | | | |
|---|--------------------------|--------------------|-----------|----------|------------|-----------------------|
| BORRELY SQUARE 9.6W (BORRELY S09) | (27B0740) 2700K - 740lm | (AD) Adjustable | (70) 70* | (38) 38° | (WH) White | (00) Without Driver |
| | (30B0800) 3000K - 800lm | | (80) 80 | | | (ND) Non-Dimmable |
| | (40B0895) 4000K - 895lm | | (90) 90** | | | (A0) Analogue (0-10V) |
| | (50B1000) 5000K - 1000lm | | | | | (A1) Analogue (1-10V) |
| | (56B1000) 5600K - 1000lm | | | | | (DX) DMX |
| | | | | | | (DL) DALI |

* 5000 & 5600K only available in CRI 70
** CRI 90 only for 2700K & 3000K
***Emergency version upon request

Create your own LED downlight with any possible combination of the above options.

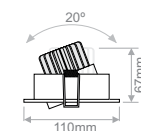
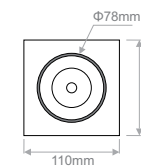
Ordering Code Example:

BORRELY S06 - 27B0505 - AD - 90 - 38 - WH - ND

Model Colour Temperature - Lumen LED Lumen Type Colour Rendering Beam Angle Colour Dimming Option

Available upon request:

✓ Emergency version



LED Downlights

LED Downlights
lightsource by BRIDGELUX

BORRELY DOUBLE SQUARE



- High efficiency deep reflector with clear cover glass.
- Supplied with non-dimmable drivers as standard.
- Emergency version upon request.
- Dimmable options.

| | | | | | |
|---|---|---------------------------|------------------|------------------|------------------|
| 3 step MacAdam Ellipse Initial | 4 step MacAdam Ellipse Initial | L70/B50 50.000h | Ra ≥70 | Ra ≥80 | Ra ≥90 |
|---|---|---------------------------|------------------|------------------|------------------|

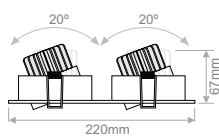
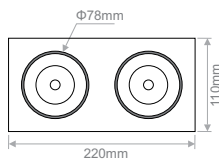
| Model | Colour Temperature | - LED Lumen /per LED | Type | Colour Rendering | Beam Angle | Colour | Dimming Option*** |
|--|--------------------|-----------------------|--------------------|------------------|------------|--------|-----------------------|
| BORRELY DOUBLE SQUARE 12.8W (BORRELY DS12) | (27B0505) | 2700K - 505lm per LED | (AD) Adjustable | (70) 70* | (38) 38° | | (00) Without Driver |
| | (30B0550) | 3000K - 550lm per LED | | (80) 80 | | | (ND) Non-Dimmable |
| | (40B0590) | 4000K - 590lm per LED | | (90) 90** | | | (A0) Analogue (0-10V) |
| | (56B0685) | 5600K - 685lm per LED | | | | | (A1) Analogue (1-10V) |
| | | | | | | | (DX) DMX |
| | | | | | | | (DL) DALI |

* 5600K only available in CRI 70
** CRI 90 only for 2700K & 3000K
***Emergency version upon request



| | | | | | | | |
|--|-----------|------------------------|--------------------|-----------|----------|---------------|-----------------------|
| BORRELY DOUBLE SQUARE 19.2W (BORRELY DS19) | (27B0740) | 2700K - 740lm per LED | (AD) Adjustable | (70) 70* | (38) 38° | (WH) White | (00) Without Driver |
| | (30B0800) | 3000K - 800lm per LED | | (80) 80 | | | (ND) Non-Dimmable |
| | (40B0895) | 4000K - 895lm per LED | | (90) 90** | | | (A0) Analogue (0-10V) |
| | (50B1000) | 5000K - 1000lm per LED | | | | | (A1) Analogue (1-10V) |
| | (56B1000) | 5600K - 1000lm per LED | | | | | (DX) DMX |
| | | | | | | (DL) DALI | |

* 5000 & 5600K only available in CRI 70
** CRI 90 only for 2700K & 3000K
***Emergency version upon request



208x98mm

Create your own LED downlight with any possible combination of the above options. Ordering Code Example:

BORRELY DS12 - 27B0505 - AD - 90 - 38 - WH - ND

Model Colour Temperature - LED Lumen /per LED Type Beam Angle Colour Dimming Option

Available upon request:

✓ Emergency version



LED Downlights

LED Downlights
lightsource by BRIDGELUX

VESTA ROUND



- Supplied with non-dimmable drivers as standard.
- Emergency version upon request.
- Dimmable options.

| | | | | | |
|---|---|---------------------------|------------------|------------------|------------------|
| 3 step MacAdam Ellipse Initial | 4 step MacAdam Ellipse Initial | L70/B50 50.000h | Ra ≥70 | Ra ≥80 | Ra ≥90 |
|---|---|---------------------------|------------------|------------------|------------------|

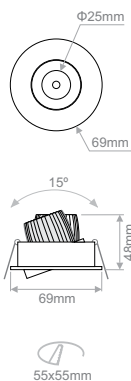
| Model | Colour Temperature - LED Lumen | Type | Colour Rendering | Beam Angle | Colour | Dimming Option*** |
|--|--------------------------------|--------------------|------------------|------------|------------|-----------------------|
| VESTA ROUND 6.4W (VESTA R06) | (27B0505) 2700K - 505lm | (AD) Adjustable | (70) 70* | (38) 38° | (WH) White | (00) Without Driver |
| | (30B0550) 3000K - 550lm | | (80) 80 | | | (ND) Non-Dimmable |
| | (40B0590) 4000K - 590lm | | (90) 90** | | | (A0) Analogue (0-10V) |
| | (56B0685) 5600K - 685lm | | | | | (A1) Analogue (1-10V) |
| | | | | | | (DX) DMX |
| | | | | | | (DL) DALI |

* 5600K only available in CRI 70
** CRI 90 only for 2700K & 3000K
***Emergency version upon request

Create your own LED downlight with any possible combination of the above options.

Ordering Code Example:

| | | | | | | | | | | | | | |
|-------|----------------------------|-----|---------|------------------|------------|--------|----------------|---|----|---|----|---|----|
| VESTA | R06 | - | 27B0505 | - | AD | - | 90 | - | 38 | - | WH | - | ND |
| Model | Colour Temperature - Lumen | LED | Type | Colour Rendering | Beam Angle | Colour | Dimming Option | | | | | | |



Available upon request:

✓ Emergency version

LED Downlights

LED Downlights
lightsource by BRIDGELUX

VESTA SQUARE



- Supplied with non-dimmable drivers as standard.
- Emergency version upon request.
- Dimmable options.

| | | | | | |
|---|---|---------------------------|------------------|------------------|------------------|
| 3 step MacAdam Ellipse Initial | 4 step MacAdam Ellipse Initial | L70/B50 50.000h | Ra ≥70 | Ra ≥80 | Ra ≥90 |
|---|---|---------------------------|------------------|------------------|------------------|

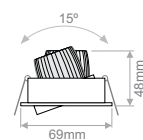
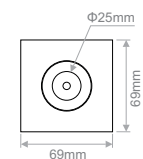
| Model | Colour Temperature - LED Lumen | Type | Colour Rendering | Beam Angle | Colour | Dimming Option*** |
|---|--------------------------------|-----------------|------------------|------------|------------|-----------------------|
| VESTA SQUARE 6.4W (VESTA SQ6) | (27B0505) 2700K - 505lm | (AD) Adjustable | (70) 70* | (38) 38° | (WH) White | (00) Without Driver |
| | (30B0550) 3000K - 550lm | | (80) 80 | | | (ND) Non-Dimmable |
| | (40B0590) 4000K - 590lm | | (90) 90** | | | (A0) Analogue (0-10V) |
| | (56B0685) 5600K - 685lm | | | | | (A1) Analogue (1-10V) |
| | | | | | | (DX) DMX |
| | | | | | | (DL) DALI |

* 5600K only available in CRI 70
** CRI 90 only for 2700K & 3000K
***Emergency version upon request

Create your own LED downlight with any possible combination of the above options.

Ordering Code Example:

| | | | | | | | | | | | | | |
|-------|----------------------------|------|------------------|------------|--------|----------------|----|---|----|---|----|---|----|
| VESTA | SQ6 | - | 27B0505 | - | AD | - | 90 | - | 38 | - | WH | - | ND |
| Model | Colour Temperature - Lumen | Type | Colour Rendering | Beam Angle | Colour | Dimming Option | | | | | | | |



Available upon request:
✓ Emergency version

LED Downlights

LED Downlights
lightsource by BRIDGELUX

DEDALOS

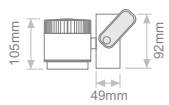
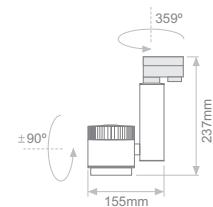
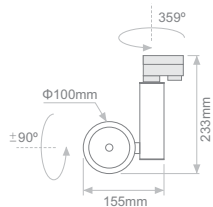


- High efficiency deep reflector with clear cover glass.
- Track light ideal for retail lighting.
- 359° adjustable on the horizontal plane & ±90° on the vertical plane.
- Emergency version upon request

| | | | | | |
|---|---|---------------------------|------------------|------------------|------------------|
| 3 step MacAdam Ellipse Initial | 4 step MacAdam Ellipse Initial | L70/B50 50.000h | Ra ≥70 | Ra ≥80 | Ra ≥90 |
|---|---|---------------------------|------------------|------------------|------------------|

| Model | Colour Temperature - LED Lumen | Type | Colour Rendering | Beam Angle | Colour | Dimming Option*** |
|--------------------------------------|--------------------------------|--------------------|------------------|------------|------------|-------------------|
| DEDALOS 10.3W (DEDALOS 10) | (27B0850) 2700K - 850lm | (AD) Adjustable | (70) 70* | (10) 10° | (WH) White | (ND) Non-Dimmable |
| | (30B0930) 3000K - 930lm | | (80) 80 | (30) 30° | | |
| | (35B0980) 3500K - 980lm | | (90) 90** | (45) 45° | | |
| | (40B1040) 4000K - 1040lm | | | | | |
| | (50B1170) 5000K - 1170lm | | | | | |
| | (56B1170) 5600K - 1170lm | | | | | |

* 5000K & 5600K only available in CRI 70
** CRI 90 only for 2700K & 3000K
***Emergency version upon request



| | | | | | | |
|--------------------------------------|--------------------------|--------------------|-----------|----------|------------|-------------------|
| DEDALOS 14.7W (DEDALOS 15) | (27B1230) 2700K - 1230lm | (AD) Adjustable | (70) 70* | (10) 10° | (WH) White | (ND) Non-Dimmable |
| | (30B1340) 3000K - 1340lm | | (80) 80 | (30) 30° | | |
| | (35B1420) 3500K - 1420lm | | (90) 90** | (45) 45° | | |
| | (40B1500) 4000K - 1500lm | | | | | |
| | (50B1680) 5000K - 1680lm | | | | | |
| | (56B1680) 5600K - 1680lm | | | | | |

* 5000K & 5600K only available in CRI 70
** CRI 90 only for 2700K & 3000K
***Emergency version upon request

Create your own LED downlight with any possible combination of the above options.

Ordering Code Example:

DEDALOS 10 - 56B1170 - AD - 70 - 30 - WH - ND

Model Colour Temperature - Lumen LED Lumen Type Colour Rendering Beam Angle Colour Dimming Option

Available upon request:

✓ Emergency version

fibreLED

LED Lighting Specialists

www.fibreled.com

[Contents](#)