



led profiles for surfaces



MILANO

44



CALIFORNIA

46



CALIFORNIA XL

47



ROMA

48



NEW YORK

50



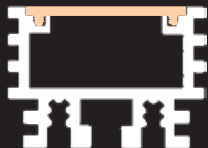
ROMA XL

52



VERSAILLES

54



INFERNO

56



CHICAGO

58



TORINO

60



DETROIT

62



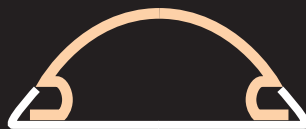
TENNESSEE

63



NEW YORK  
MINI

64



BERNA

66



VISBY

67

Our PROFESSIONAL led profile line for surfaces (only 7mm high) is manufactured in high purity anodised aluminium and available in three different colours (the profile can also be supplied in raw aluminium with no coating of paint).

The profile is ideal for using on wall surfaces, furniture, shelves and similar areas, where we require a minimalist profile with very reduced dimensions.

Its cover (available in 5 different finishes), has our "easy-ON" system. Once combined with this profile, it provides an IP65 rating to the luminaire.

This can be used in places with high levels of humidity, for example bathrooms, kitchens, gyms, spas, cold storage chambers, fridges, and others.

The profile and its covers are available in lengths of 2 and 6 metre, thus allowing us to carry out large projects where all profiles do not have joints or similar surface breaks.

It is suitable for led strips with a maximum length of 12mm, whose power level does not exceed 20W/m. In order to obtain a more homogeneous and diffused illumination, we recommend the combined use of our opal cover with Canovelles-Barcelona-Gomera-COB led strips.

**We offer a 10 year guarantee on the profiles and a 4 year guarantee on the covers.**

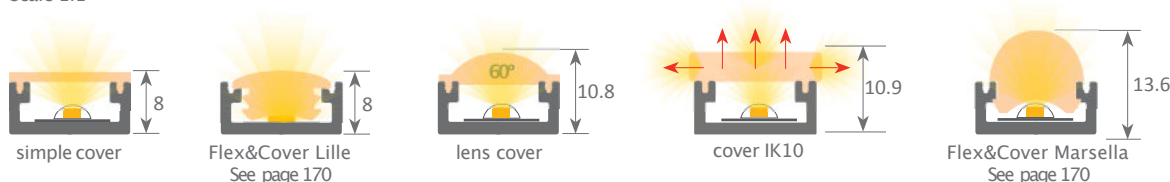
## MILANO



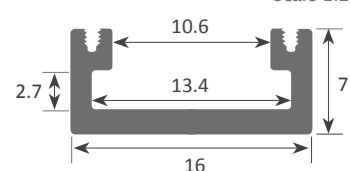
IP65



Scale 1:1



Scale 1:2



When applying the lens cover on the Milano profile with the flexible led strip we get a beam of 60° light.



### Aluminium profile

01.001	anodised silver	2m
01.002	anodised black	2m
01.003	anodised inox	2m
01.004	anodised silver	6m
01.005	anodised black	6m
01.006	anodised inox	6m



### Plastic endcaps

19.001	grey without hole
19.002	grey with hole
19.003	black without hole
19.004	black with hole



### Plastic endcaps

19.005	grey without hole lens
19.006	grey with hole lens



### Clip

20.001	chrome steel
20.002	black oxide finish



### Polycarbonate cover "easy-ON"

18.001	transparent	2m
18.002	opal	2m
18.003	frosted	2m
18.004	transparent	6m
18.005	opal	6m
18.006	frosted	6m



### Black&White cover "easy-ON"

18.007	Black&White	2m
18.008	opaque grey	2m
18.009	Black&White	6m



### Polycarbonate cover "easy-ON"

18.010	lens	2m
18.011	lens	6m



### Polycarbonate cover IK10

18.012	frosted	2m
18.013	frosted	6m



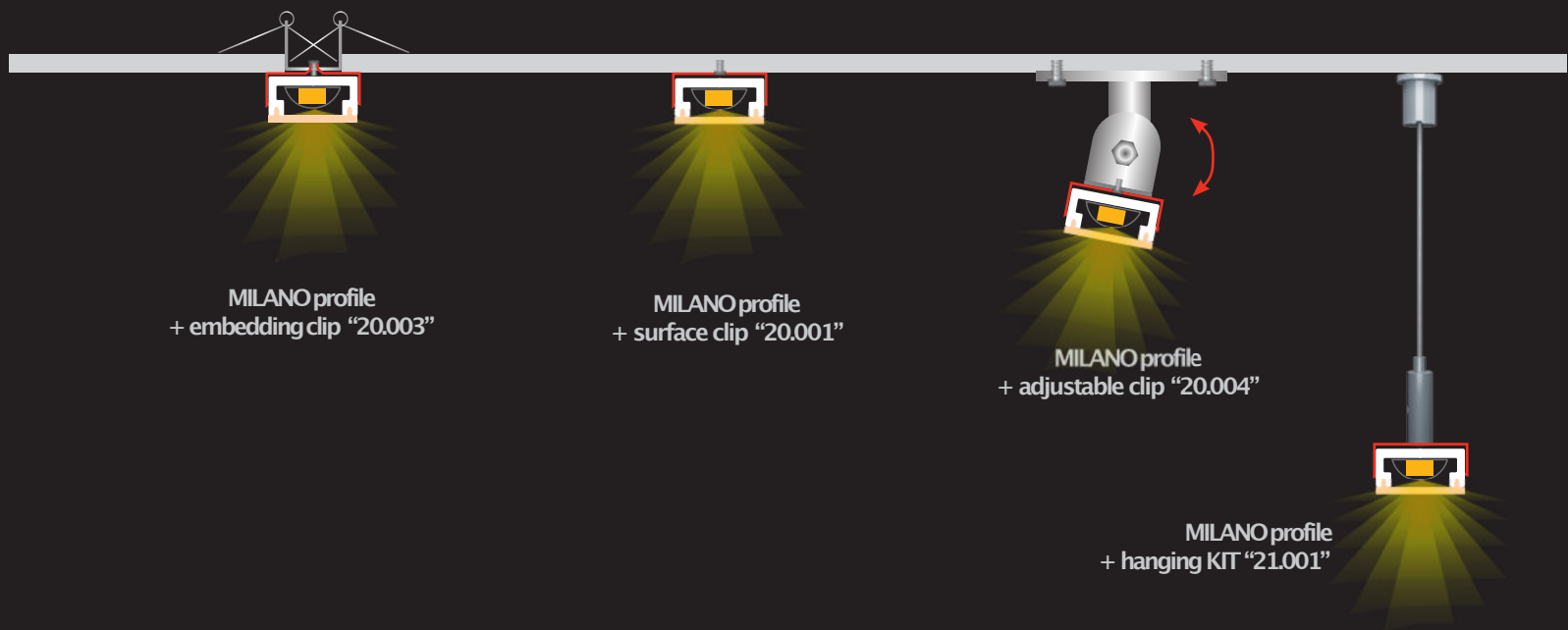
**New flexible Slim Milano**

See page 164



Patente Europea  
Nº.: 13156605.1

Aluminium alloy extrusion process in accordance with: ISO 9001:2008 - ISO 14001 / Tolerances defined by: UNE-EN 755-9 / UNE-EN 12020-2 Theoretical weight: 0.118kg / Alloy: 6063 / Perimeter: 67mm / Anodising minimum: 15 microns  
Aluminium purity: 95-98% / Material treatment: T-5 / Covers: Fireproof V0



**Embedding clip**  
20.003 chrome steel  
(clip not included)



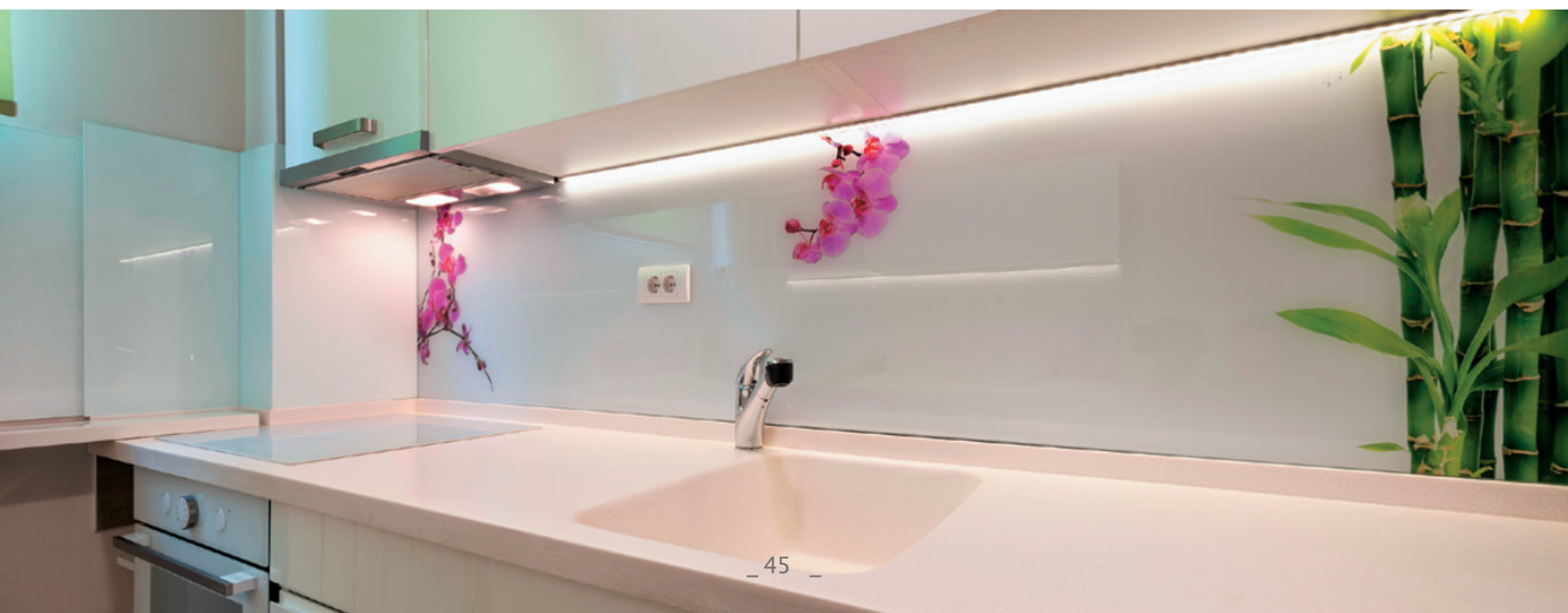
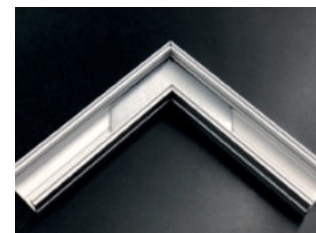
**Adjustable bracket**  
20.004 chrome steel  
(clip not included)



**Hanging KIT**  
21.001 silver set of 2 units  
21.002 white set of 2 units  
21.003 black set of 2 units  
(clip not included)



**90° angle bracket**  
22.001 steel (52x13mm)



## CALIFORNIA

Led profile BASIC series, for surfaces with only 8mm height. Manufactured in high purity aluminium and available in anodised silver, white lacquered and raw aluminium. (On demand it can be supplied with different lacquered/anodised finishes).

Ideal for surface applications, on walls, furniture, bookcases and similar, where we require a minimalist profile with very reduced dimensions.

Suitable for led strips with a maximum width of 14mm and power not greater than 20W/m. We recommend our frosted cover and ecoled strips Canovelles-Barcelona-Gomera to achieve homogenous lighting and without seeing the led dots.

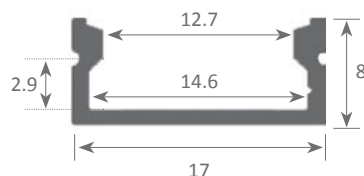
**We offer 2 years guarantee on profiles and covers.**



Scale 1:1



Scale 1:2



### Aluminium profile

01.007	anodised silver	2m
01.008	white lacquered	2m
01.009	raw	2m
01.010	anodised silver	6m
01.011	white lacquered	6m
01.012	raw	6m



### Plastic endcaps

19.007	white with hole
19.008	white without hole
19.009	grey with hole
19.010	grey without hole



### Clip

20.005	transparent plastic
--------	---------------------



### 90° angle bracket

22.001	steel (52x13mm)
--------	-----------------



### Methacrylate cover

18.014	transparent	2m
18.015	frosted	2m
18.018	opal	3m
18.016	transparent	6m
18.017	frosted	6m



### Embedding clip

20.003	chrome steel (clip not included)
--------	-------------------------------------



### Adjustable bracket

20.004	chrome steel (clip not included)
--------	-------------------------------------



Aluminium alloy extrusion process in accordance with: ISO 9001:2008 - ISO 14001 / Tolerances defined by: UNE-EN 755-9 / UNE-EN 12020-2  
Theoretical weight: 0.111kg / Alloy: 6063 / Perimeter: 66mm / Anodising minimum: 15 microns  
Aluminium purity: 95-98% / Material treatment: T-5 / Covers: methacrylate (greater protection against UV rays)

Led profile BASIC serie for surfaces (only 9.8mm high), manufactured in high purity aluminium, available in anodised silver. Ideal for wall surfaces, furnitures, shelves and similar.  
It is suitable for led strips with a maximum width of 20mm, whose power level does not exceed 30W/m.

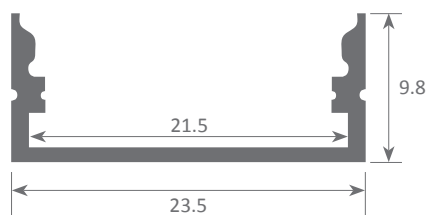
We offer a 2 year guarantee on our profiles and covers.

# CALIFORNIA XL

Scale 1:1



Scale 1:2



With double flexible strip of 10mm



**Aluminium profile**

02.011 anodised silver 3m



**Plastic endcaps**

19.028 with hole  
19.029 without hole



**Clip**

20.011 chrome steel



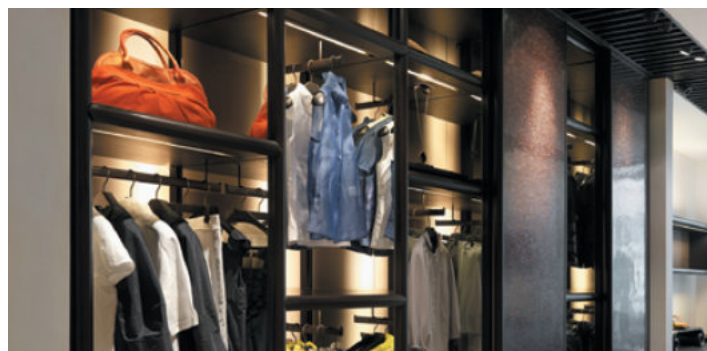
**Methacrylate cover**

18.035 frosted 3m



**Adjustable bracket**

20.004 chrome steel  
(clip not included)



Aluminium alloy extrusion process in accordance with: ISO 9001:2008 - ISO 14001 / Tolerances defined by: UNE-EN 755-9 / UNE-EN 12020-2  
Theoretical weight: 0.238kg / Alloy: 6063 / Perimeter: 138mm / Anodising minimum: 15 microns  
Aluminium purity: 95-98% / Material treatment: T-5 / Cover: Fireproof VØ



Our PROFESSIONAL led profile series for surfaces (only 11mm high) is manufactured in high purity anodised aluminium and available in three different colours (the profile can also be supplied in raw aluminium with no coating of paint).

The profile is ideal for using on wall surfaces, furniture, shelves and similar areas.

Its cover (available in 5 different finishings) has our "easy-ON" system; once combined with this profile it provides an IP65 rating to the luminaire.

The profile and its cover are available in lengths of 2 and 6 metre, thus allowing us to carry out large projects where all the profiles do not have joints or similar surface breaks.

It is suitable for led strips with a maximum width of 12mm, whose power level does not exceed 30W/m. In order to obtain a more homogeneous and diffused illumination, we recommend the combined use of both our opal cover and Canovelles-Barcelona-Gomera led strips.

**We offer a 10 year guarantee on the profiles and a 4 year guarantee on the covers.**

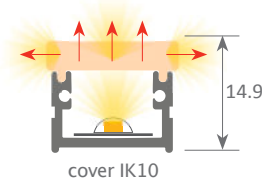
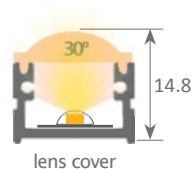
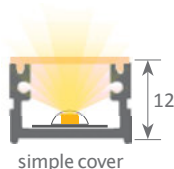
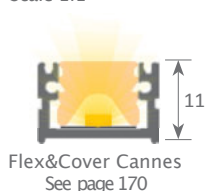
## ROMA



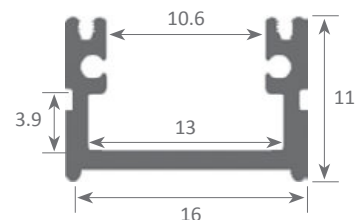
IP65



Scale 1:1



Scale 1:2



By applying the lens cover on the Roma profile together with the flexible led strip we get a beam of 30° light.



### Aluminium profile

02.001	anodised silver	2m
02.002	anodised black	2m
02.003	anodised inox	2m
02.004	anodised silver	6m
02.005	anodised black	6m
02.006	anodised inox	6m



### Plastic endcaps

19.016	grey without hole
19.017	grey with hole
19.018	black without hole
19.019	black with hole



### Plastic endcaps

19.020	grey without hole lens
19.021	grey with hole lens



### Clip

20.007	chrome steel
20.008	black oxide finish



### Polycarbonate cover "easy-ON"

18.001	transparent	2m
18.002	opal	2m
18.003	frosted	2m
18.004	transparent	6m
18.005	opal	6m
18.006	frosted	6m



### Black&White cover "easy-ON"

18.007	Black&White	2m
18.008	opaque grey	2m
18.009	Black&White	6m



### Polycarbonate cover "easy-ON"

18.010	lens	2m
18.011	lens	6m

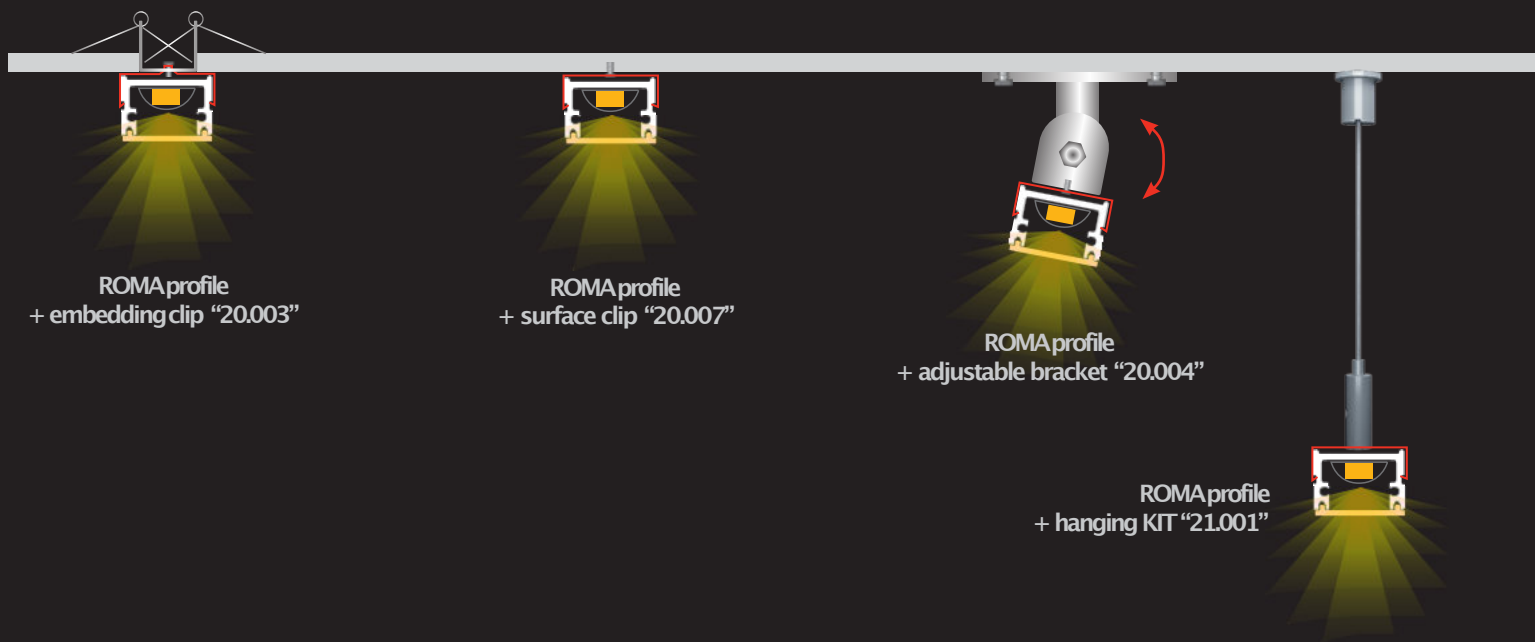


### Polycarbonate cover IK10

18.012	frosted	2m
18.013	frosted	6m



Aluminium alloy extrusion process in accordance with: ISO 9001:2008 - ISO 14001 / Tolerances defined by: UNE-EN 755-9 / UNE-EN 12020-2  
Theoretical weight: 0.143kg / Alloy: 6063 / Perimeter: 90mm / Anodising minimum: 15 microns  
Aluminium purity: 95-98% / Material treatment: T-5 / Cover: Fireproof V0



**Embedding clip**  
20.003 chrome steel  
(clip not included)



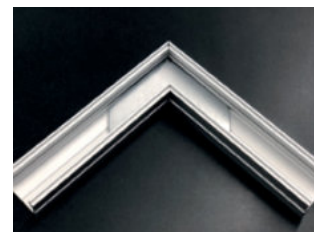
**Adjustable bracket**  
20.004 chrome steel  
(clip not included)



**Hanging KIT**  
21.001 silver set of 2 units  
21.002 white set of 2 units  
21.003 black set of 2 units  
(clip not included)



**90° angle bracket**  
22.001 steel (52x13mm)





Our BASIC led profile series for surfaces is manufactured in high purity aluminium and available in anodised silver, lacquered white and raw aluminium (on demand we can supply different anodised and lacquered finishes). Ideal for wall surfaces, furniture, shelves and similar.  
Suitable for led strips with a maximum width of 14mm and a power not greater than 30W/m. In order to obtain a more homogeneous illumination, while also making the dots invisible, we recommend the combined use of both our frosted cover and Canovelles-Barcelona-Gomera led strips.  
**We offer a 2 year guarantee on our profiles and covers.**

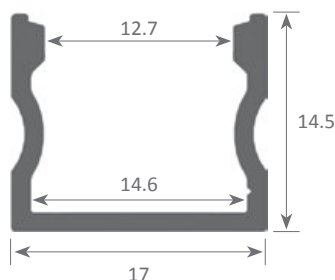
## NEW YORK



Scale 1:1



Scale 1:2



### Aluminium profile

02.012	anodised silver	2m
02.013	white lacquered	2m
02.014	raw	2m
02.015	anodised silver	6m
02.016	white lacquered	6m
02.017	raw	6m



### Methacrylate cover

18.014	transparent	2m
18.015	frosted	2m
18.018	opal	3m
18.016	transparent	6m
18.017	frosted	6m



### Plastic endcaps

19.030	white with hole
19.031	white without hole
19.032	grey with hole
19.033	grey without hole



### Embedding clip

20.003	chrome steel (clip not included)
--------	-------------------------------------



### Clip

20.005	transparent plastic
--------	---------------------



### Adjustable bracket

20.004	chrome steel (clip not included)
--------	-------------------------------------



### 90° angle bracket

22.001	steel (52x13mm)
--------	-----------------



### Adhesive magnet

42.001	12mm	1m
--------	------	----



Aluminium alloy extrusion process in accordance with: ISO 9001:2008 - ISO 14001 / Tolerances defined by: UNE-EN 755-9 / UNE-EN 12020-2  
Theoretical weight: 0.157kg / Alloy: 6063 / Perimeter: 92mm / Anodising minimum: 15 microns  
Aluminium purity: 95-98% / Material treatment: T-5 / Covers: methacrylate (greater protection against UV rays)



Our PROFESSIONAL led profiles series for surfaces is manufactured in high purity anodised aluminium. The profile is ideal for using on wall surfaces, furniture, shelves and similar areas where a width greater than the standard is required. This allows us to use wider led strips for an increased heat dissipation and a wider angle of light emission.

Its cover (available in 3 different finishings), has our "easy-ON" system. Once combined with this profile, it provides an IP65 rating to the luminaire.

The profile and its covers are available in lengths of 2 and 6 metre, thus allowing us to carry out large projects where all the profiles do not have joints or similar surface breaks.

It is suitable for led strips with a maximum width of 15mm, whose power level does not exceed 35W/m. In order to obtain a more homogeneous and diffused illumination, we recommend the combined use of both our opal cover and Canovelles-Barcelona-Gomera led strips.

**We offer a 10 year guarantee on the profiles and a 4 year guarantee on the covers.**

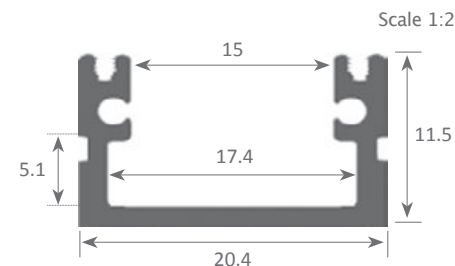
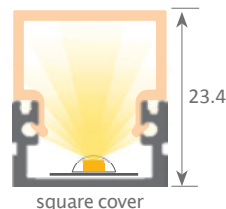
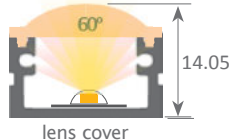
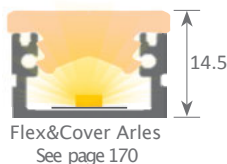
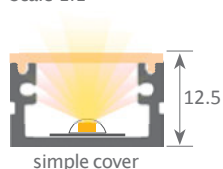
## ROMA XL



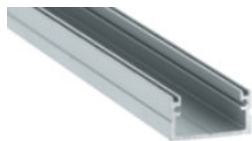
IP65



Scale 1:1



By applying the lens cover on the Roma XL profile together with the flexible led strip we get a beam of 60° light.



### Aluminium profile

02.007	anodised silver	2m
02.008	anodised black	2m
02.009	anodised silver	6m
02.010	anodised black	6m



### Plastic endcaps

19.022	without hole
19.023	with hole



### Plastic endcaps

19.024	without hole
19.025	with hole



### Endcaps for square cover

19.026	without hole (white)
19.027	without hole (black)



### Polycarbonate cover "easy-ON"

18.022	transparent	2m
18.023	opal	2m
18.024	frosted	2m
18.025	transparent	6m
18.026	opal	6m
18.027	frosted	6m



### Black&White cover "easy-ON"

18.028	Black&White	2m
18.029	Black&White	6m



### Polycarbonate cover "easy-ON"

18.030	lens	2m
18.031	lens	6m

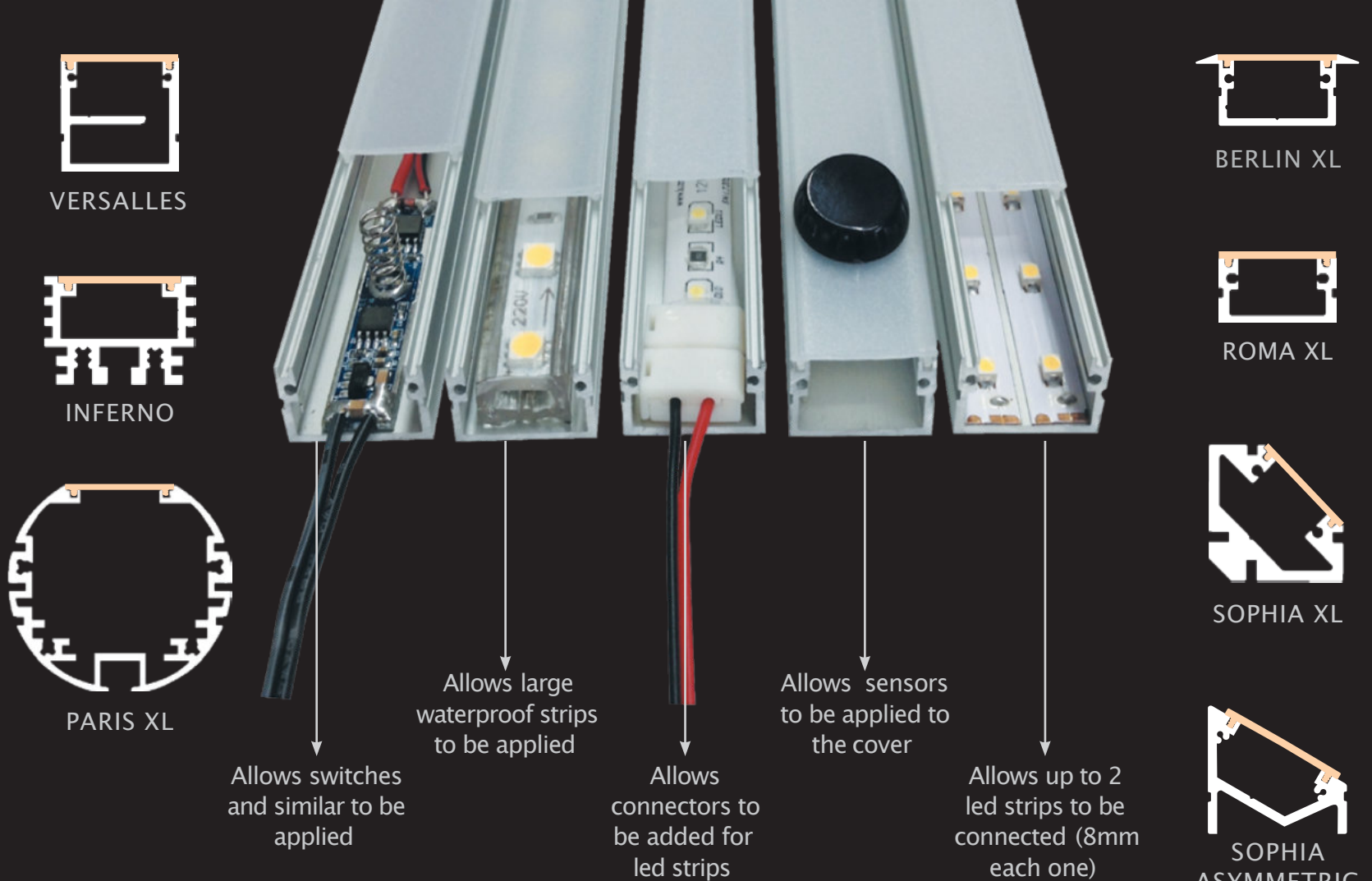


### Square cover

18.032	frosted	2m
18.102	Black&White	2m
18.033	frosted	6m
18.034	Black&White	6m



Aluminium alloy extrusion process in accordance with: ISO 9001:2008 - ISO 14001 / Tolerances defined by: UNE-EN 755-9 / UNE-EN 12020-2  
Theoretical weight: 0.162kg / Alloy: 6063 / Perimeter: 102mm / Anodising minimum: 15 microns  
Aluminium purity: 95-98% / Material treatment: T-5 / Cover: Fireproof V0



## ¿Why choose led profileXL?

Our led profiles XL are slightly larger than our standard profiles in order to house many different accessories inside, something that can't be done with other models due to the lack of space and wider led strips.

They have a cover which is 25% wider than the rest and that means a 25% increase in light projection. Bigger in size also means greater heat dissipation which is extremely important when it comes to high luminosity led strips.



**Clip**  
20.009 stainless steel  
20.010 black oxide finish



**Embedding clip**  
20.003 chrome steel  
(clip not included)



**Adjustable bracket**  
20.004 chrome steel  
(clip not included)



**Hanging KIT**  
21.001 silver  
21.002 white  
21.003 black



**90° angle bracket**  
22.001 steel (52x13mm)

set of 2 units  
set of 2 units  
set of 2 units



Our PROFESSIONAL led profile series for surfaces in high purity anodised aluminium. This profile is ideal for using on wall surfaces, furniture, shelves and similar areas, where a width greater than the standard is required. This allows us to use wider led strips for an increased heat dissipation and a wider angle of light emission.

By providing a lower channel for the return path of the cable, the profile allows us to close the circuit therefore steep voltage drops are prevented. Small drivers can also be placed in this lower channel.

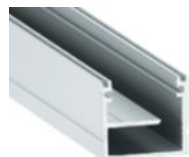
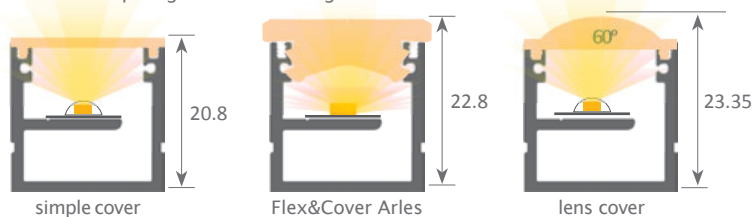
Its cover (available in 3 different finishings), which offers our "easy-ON" system, once combined with this profile provides an IP65 rating to the luminaire. It can be used in places with high levels of humidity, such as bathrooms, kitchens, gyms, spas, cold storage chambers, fridges, or others.

The profile and its covers are available in lengths of 2 and 6 metre, thus allowing us to carry out large projects, where all the profiles do not require joints or similar surface breaks. It is suitable for led strips with a maximum width of 15mm, whose power level does not exceed 35W/m. In order to obtain a more homogeneous and diffused illumination, we recommend the combined use of both our opal covers and Canovelles-Barcelona-Gomera-Cies led strips.

**We offer a 10 year guarantee on the profiles and a 4 year guarantee on the covers.**

Scale 1:1

By applying the lens cover on the Versailles profile together with the flexible led strip we get a beam of 60° light.



**Aluminium profile**

02.018	anodised silver	2m
02.019	anodised black	2m
02.020	anodised silver	6m
02.021	anodised black	6m



**Plastic endcaps**

19.034	without hole
--------	--------------



**Endcaps for square cover**

19.035	without hole (white)
19.036	without hole (black)



**Clip**

20.009	stainless steel
20.010	black oxide finish



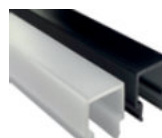
**Polycarbonate cover "easy-ON"**

18.022	transparent	2m
18.023	opal	2m
18.024	frosted	2m
18.025	transparent	6m
18.026	opal	6m
18.027	frosted	6m



**Black&White cover "easy-ON"**

18.028	Black&White	2m
18.030	lens	2m
18.029	Black&White	6m
18.031	lens	6m



**Square cover**

18.032	frosted	2m
18.102	Black&White	2m
18.033	frosted	6m
18.034	Black&White	6m



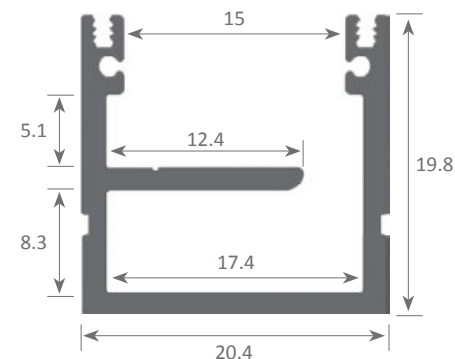
## VERSALLES



IP65



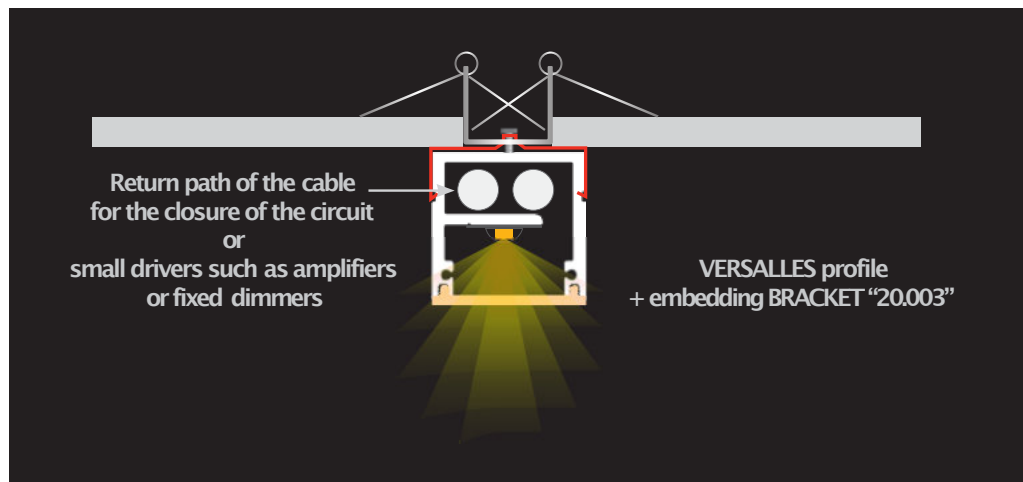
Scale 1:2



Patente Europea  
Nº.: 13156605.1

Aluminium alloy extrusion process in accordance with: ISO 9001:2008 - ISO 14001 / Tolerances defined by: UNE-EN 755-9 / UNE-EN 12020-2  
Theoretical weight: 0.273kg / Alloy: 6063 / Perimeter: 159mm / Anodising minimum: 15 microns  
Aluminium purity: 95-98% / Material treatment: T-5 / Covers: Fireproof V0





**Embedding clip**  
20.003 chrome steel  
(clip not included)



**Adjustable bracket**  
20.004 chrome steel  
(clip not included)



**Hanging KIT**  
21.001 silver set of 2 units  
21.002 white set of 2 units  
21.003 black set of 2 units  
(clip not included)

Our PROFESSIONAL led profile series for surfaces and ceiling suspension is manufactured in high purity aluminium and available in silver and black anodised. Ideal for wall surfaces, furniture, shelves and similar areas where a width greater than the standard is required. This allows us to use wider led strips for an increased heat dissipation and a wider angle of light emission.

Thanks to its radiator-like design, this profile achieves greater levels of heat dissipation when compared to any other type. By using its lower channels, the manufacturing of square, rectangular or L-shaped hanging luminaires is also possible.

Its cover (available in 3 different finishing) has our "easy-ON" system. Once combined with this profile, it provides an IP65 rating to the luminaire. Hence, it can be used in places with high levels of humidity, such as bathrooms, kitchens, gyms, spas, cold storage chambers, fridges, or others.

**We offer a 10 year guarantee on the profiles and a 4 year guarantee on the covers.**

## INFERNO

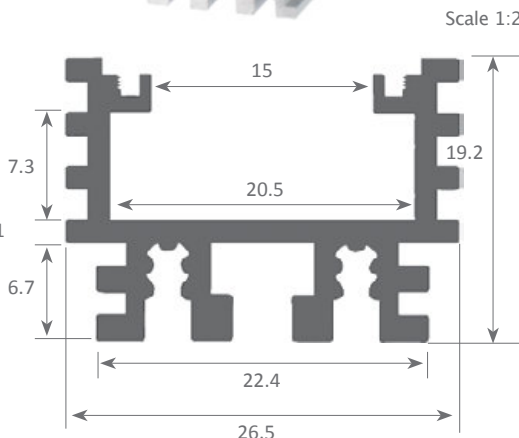
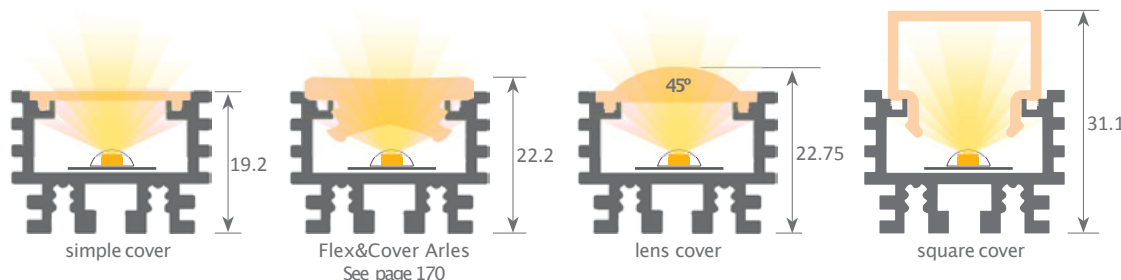


IP65



Scale 1:1

By applying the lens cover on the Inferno profile together with the flexible led strip we get a beam of 45° light. The information is just approximate. Please check with our technical department.



### Aluminium profile

02.022	anodised silver	2m
02.023	anodised black	2m
02.024	anodised silver	6m
02.025	anodised black	6m



### Plastic endcaps

19.037	grey without hole
19.038	grey with hole
19.039	black without hole
19.040	black with hole



### Aluminium endcaps

19.041	anodised silver without hole
19.042	anodised silver with hole



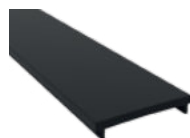
### Endcaps for square cover

19.043	without hole (white)
19.044	without hole (black)



### Polycarbonate cover "easy-ON"

18.022	transparent	2m
18.023	opal	2m
18.024	frosted	2m
18.025	transparent	6m
18.026	opal	6m
18.027	frosted	6m



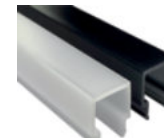
### Black&White cover

18.028	Black&White	2m
18.029	Black&White	6m



### Polycarbonate cover "easy-ON"

18.030	lens	2m
18.031	lens	6m



### Square cover

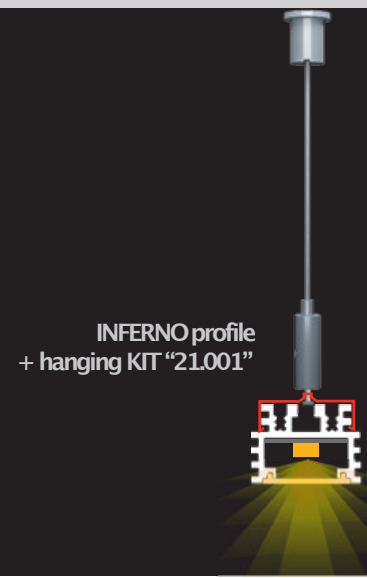
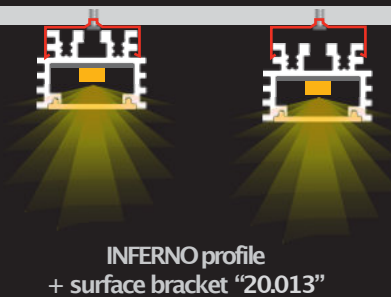
18.032	frosted	2m
18.102	Black&White	2m
18.033	frosted	6m
18.034	Black&White	6m



Patente Europea  
Nº.: 13156605.1

Aluminium alloy extrusion process in accordance with: ISO 9001:2008 - ISO 14001 / Tolerances defined by: UNE-EN 755-9 / UNE-EN 12020-2  
Theoretical weight: 0.446kg / Alloy: 6063 / Perimeter: 211mm / Anodising minimum: 15 microns  
Aluminium purity: 95-98% / Material treatment: T-5 / Covers: Fireproof V0

The increase in distance from the wall improves the ventilation levels,  
allowing us to obtain a higher rating of heat dissipation



The 20.013 can be placed in the Inferno profile at two  
different heights.



22.003 steel bracket  
90° Bracket  
It is fixed with double-sided adhesive tape.



Clip  
20.012 chrome steel  
20.013 black oxide finish



Adjustable bracket  
20.004 chrome steel  
(clip not included)



Embedding clip  
20.003 chrome steel  
(clip not included)



Hanging KIT  
21.001 silver set of 2 units  
21.002 white set of 2 units  
21.003 black set of 2 units  
(clip not included)



90° angle bracket  
22.003 steel

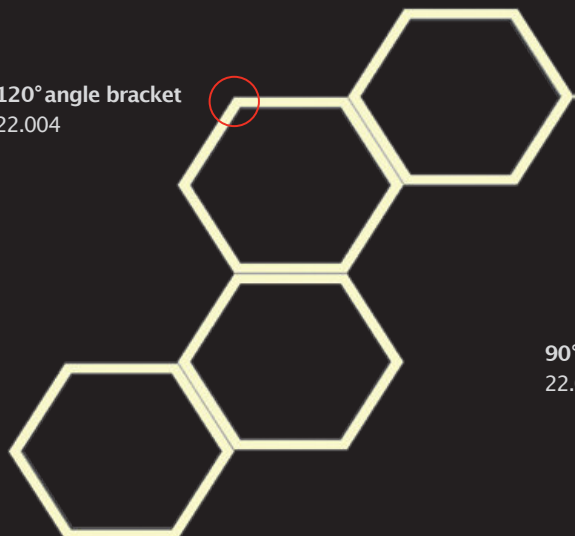


120° angle bracket  
22.004 steel

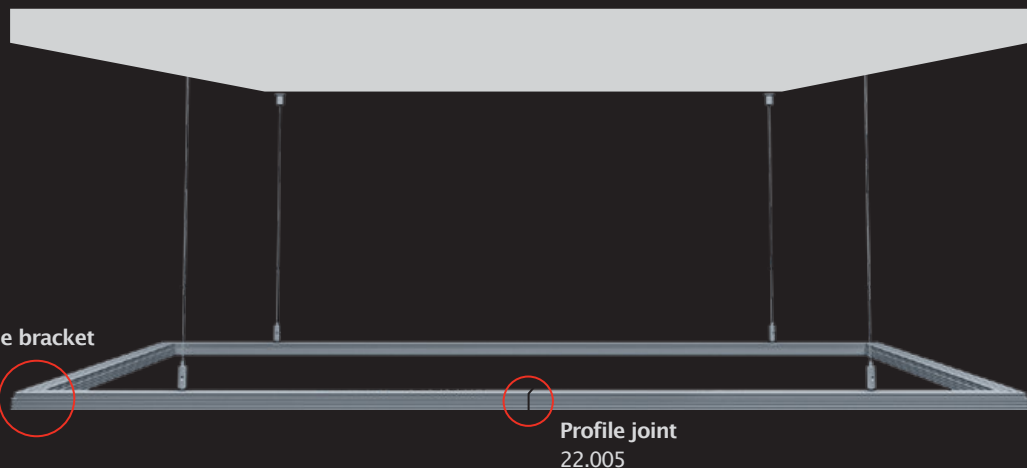


Profile joint  
22.005 steel

120° angle bracket  
22.004



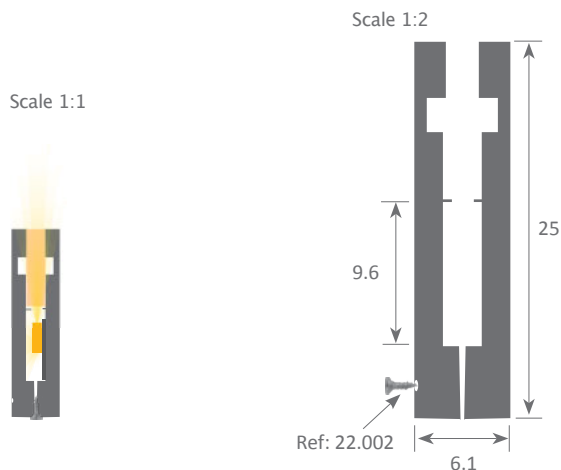
90° angle bracket  
22.003



## CHICAGO

Led profile for surfaces or embedding with a width of only 6mm and manufactured in high purity aluminium and anodised in silver. The very latest in thin led profiles as the width of visible light is only 2.5mm. Its main function is for embedding in furniture and wherever we may need a very fine line of light. This is a very elegant and exclusive product.

We recommend the use of ecoled Getafe and Irún due to its extremely thin PCB and for side lighting. We offer a 2 year guarantee on both profiles and covers.



**Aluminium profile**  
01.015 anodised silver 1m



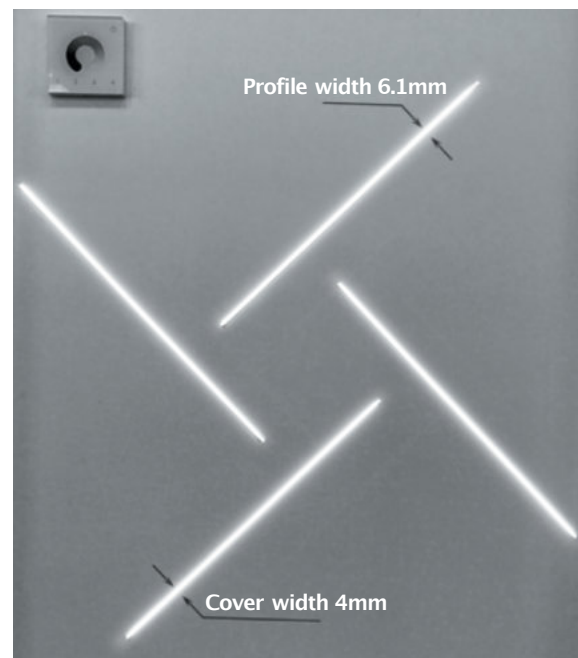
**Endcaps**  
19.014 without hole  
19.015 with hole



**Methacrylate cover**  
18.021 opal 1m  
(to simply installation we recommend fixing the cover with double sided tape).



**Fixing screw**  
22.002 chrome steel



Aluminium alloy extrusion process in accordance with: ISO 9001:2008 - ISO 14001 / Tolerances defined by: UNE-EN 755-9 / UNE-EN 12020-2  
Theoretical weight: 0.285kg / Alloy: 6063 / Perimeter: 116.6mm / Anodising minimum: 15 microns  
Aluminium purity: 95-98% / Material treatment: T-5 / Covers: methacrylate (greater protection against UV rays)







Our PROFESSIONAL led profiles series for surfaces and corners, due to its bevelled shape, can also be used as a corner profile. It is manufactured in high purity aluminium and available in anodised silver. Ideal for surfaces, corners, furniture, shelves and similar.

It can be combined with our 30°/60°/90° optic covers or with our white frosted cover.

Suitable for led strips with a maximum width of 12mm and a power not greater than 30W/m. In order to obtain a more homogeneous illumination, while also making the dots invisible, we recommend the combined use of both our frosted cover and Canovelles-Barcelona-Gomera led strips.

We offer a 2 year guarantee on our profiles and covers.

## TORINO

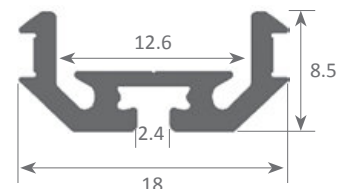
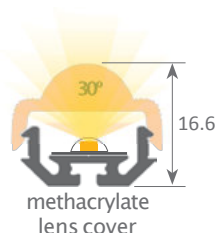
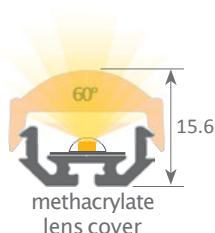
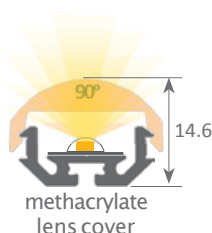
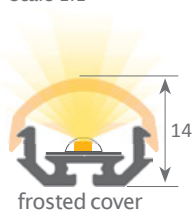


Torino with frosted cover

Torino with lens

Scale 1:2

Scale 1:1



### Aluminium profile

02.026	anodised silver	2m
02.027	anodised silver	6m



### Aluminium endcaps

19.045	for 30° lens
19.046	for 60° lens
19.047	for 90° lens and frosted cover 18.039



### Clip

20.014	transparent plastic
--------	---------------------



### Methacrylate cover

18.036	30° lens	2m
--------	----------	----



### Methacrylate cover

18.037	60° lens	2m
--------	----------	----



### Methacrylate cover

18.038	90° lens	2m
--------	----------	----



### Methacrylate cover

18.039	frosted	2m
--------	---------	----



Aluminium alloy extrusion process in accordance with: ISO 9001:2008 - ISO 14001 / Tolerances defined by: UNE-EN 755-9 / UNE-EN 12020-2  
Theoretical weight: 0.154kg / Alloy: 6063 / Perimeter: 86mm / Anodising minimum: 15 microns  
Aluminium purity: 95-98% / Material treatment: T-5 / Covers: Fireproof V0







A surface led profile with only 8mm width, manufactured in high purity aluminium and anodised in silver (on demand can be supplied with different lacquered/anodised finishing). Ideal for surface applications, on walls, furniture, bookcases and similar, where we require a minimalist profile with very reduced dimensions.

Suitable for led strips with a maximum width of 5mm and power not greater than 16W/m. We recommend the use of ecoled Cies due to its PCB (only 4mm wide).

**We offer 2 years guarantee on profiles and covers.**

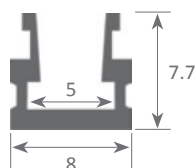
## DETROIT



Scale 1:1



Scale 1:2



**Aluminium profile**  
01.013 anodised silver 2m



**Plastic endcaps**  
19.011 with hole



**Clip**  
20.006 chrome steel



**Methacrylate cover**  
18.019 opal 2m



**Adjustable bracket**  
20.004 chrome steel  
(clip not included)



Aluminium alloy extrusion process in accordance with: ISO 9001:2008 - ISO 14001 / Tolerances defined by: UNE-EN 755-9 / UNE-EN 12020-2  
Theoretical weight: 0.080kg / Alloy: 6063 / Perimeter: 18.2mm / Anodising minimum: 15 microns  
Aluminium purity: 95-98% / Material treatment: T-5 / Covers: methacrylate (greater protection against UV rays)

Our led profile series for surfaces is only 8mm high and manufactured in high purity anodised aluminium. This profile is ideal for using on wall surfaces, furniture, shelves and similar areas, where we require a minimalist profile with very reduced dimensions. Its white cover completely embraces the profile and provides a greater angle of light emission.

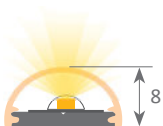
It is suitable for led strips with a maximum width of 13mm, whose power level does not exceed 20W/m. In order to obtain a more homogeneous illumination, while also making the dots invisible, we recommend the combined use of both our opal cover and Canovelles-Barcelona-Gomera led strips.

**We offer a 2 year guarantee on both profiles and covers.**

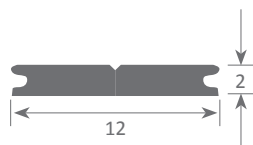
## TENNESSEE



Scale 1:1



Scale 1:2



**Aluminium profile**  
01.014 anodised silver 2m



**Plastic endcaps**  
19.012 with hole  
19.013 without hole



**Polycarbonate cover**  
18.020 opal 2m



Aluminium alloy extrusion process in accordance with: ISO 9001:2008 - ISO 14001 / Tolerances defined by: UNE-EN 755-9 / UNE-EN 12020-2  
Theoretical weight: 0.061kg / Alloy: 6063 / Perimeter: 30.4mm / Anodising minimum: 15 microns  
Aluminium purity: 95-98% / Material treatment: T-5 / Covers: methacrylate (greater protection against UV rays)

Our BASIC led profile series for surfaces is manufactured in high purity aluminium and available in anodised silver and black (on demand we can supply different anodised and lacquered finishings). Ideal for wall surfaces, furniture, shelves and similar. Suitable for led strips with a maximum width of 5mm and a power not greater than 15W/m. In order to obtain a more homogeneous illumination, while also making the dots invisible, we recommend the combined use of both our frosted cover and Cies led strips. We offer a 2 year guarantee on our profiles and covers.

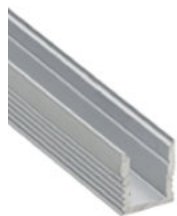
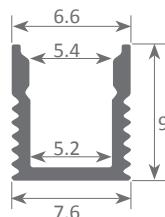
## NEW YORK MINI



Scale 1:1



Scale 1:2



### Aluminium profile

02.029 anodised silver 3m  
02.030 anodised black 3m



### Plastic endcaps

19.215 white with hole  
19.216 white without hole  
19.288 black without hole  
19.287 black with hole



### Clip

20.049 chrome steel



### Polycarbonate cover

18.081 frosted 3m



### Black&White cover

18.085 Black&White 3m



### Adjustable bracket

20.004 chrome steel  
(clip not included)



Aluminium alloy extrusion process in accordance with: ISO 9001:2008 - ISO 14001 / Tolerances defined by: UNE-EN 755-9 / UNE-EN 12020-2  
Alloy: 6063 / Anodising minimum: 15 microns  
Aluminium purity: 95-98% / Material treatment: T-5 / Covers: methacrylate (greater protection against UV rays)







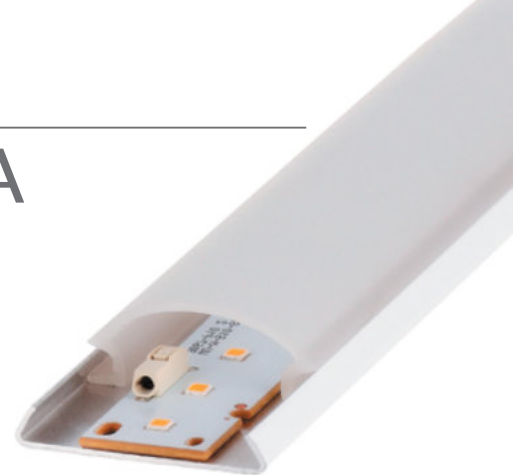
Our BASIC led profile series for surfaces, manufactured in curved aluminium is available in lacquered white (on demand, we can supply different anodised and lacquered finishes). Ideal for wall surfaces, ceilings, display units, furniture, shelves and similar. It is fixed using single or double-sided magnetic adhesive tape.

Suitable for led strips with a maximum width of 35mm and a power not greater than 35W/m. Apart from the flexible led strips, rigid ones can also be combined with this profile).

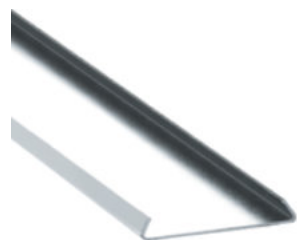
In order to obtain a more homogeneous illumination, while also making the light dots invisible, we recommend the use of our Canovelles-Barcelona-Gomera led strips.

We offer a 2 year guarantee on our profiles and covers.

## BERNA



Scale 1:1



**Aluminium profile**  
02.028 white aluminium 2m



**Plastic endcaps**  
19.286 methacrylate frosted



**Methacrylate cover**  
18.040 frosted white 2m

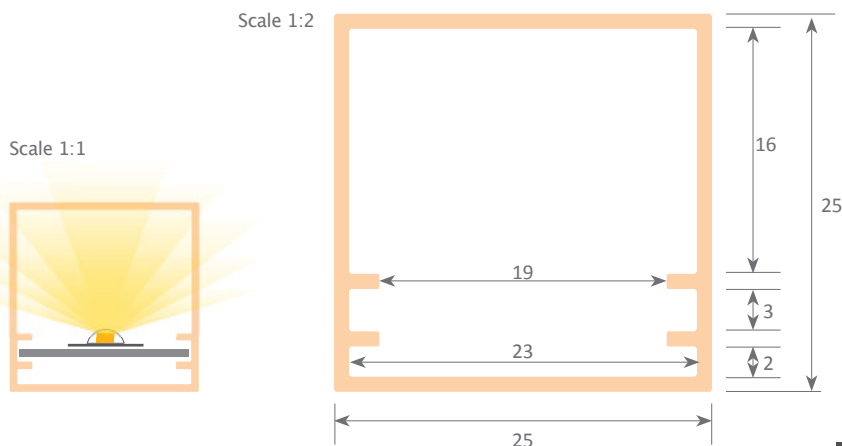


## VISBY

Our PROFESSIONAL led profile series for surfaces and ceiling suspension is manufactured in white polycarbonate. The profile is ideal for surface applications, for example ceiling suspended luminaires, floor or wall mounted luminaires, and similar.

It is suitable for led strips with a maximum width of 15mm and a power not greater than 20W/m. In order to obtain a more homogeneous illumination, while also making the dots invisible, we recommend combining it with our Canovelles-Barcelona-Gomera led strips.

We offer a 2 year guarantee.



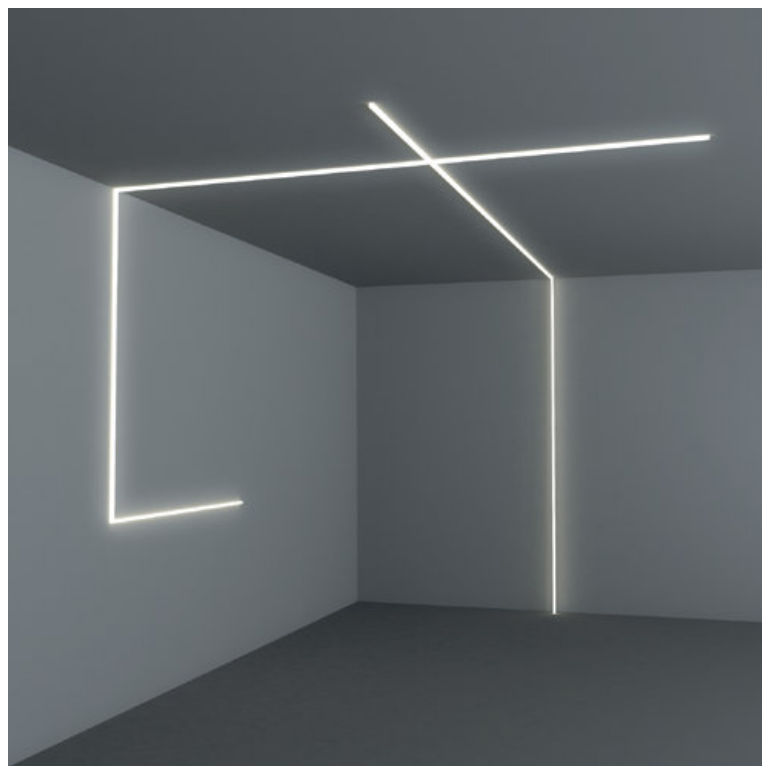
**Polycarbonate profile**  
02.031 opal white 3m



**Inner plate**  
22.048 aluminium 2m



**Endcaps**  
19.225 without hole



Aluminium alloy extrusion process in accordance with: ISO 9001:2008 - ISO 14001 / Tolerances defined by: UNE-EN 755-9 / UNE-EN 12020-2  
Theoretical weight: 0.135kg / Alloy: 6063 / Perimeter: 100mm / Anodising minimum: 15 microns  
Aluminium purity: 95-98% / Material treatment: T-5 / Covers: methacrylate (greater protection against UV rays)