


Big Profiles



A wide range of large and medium sized profiles used to manufacture surface, hanging, recessed luminaires or wall lamps.

Our main models are available with our exclusive IP65 “easy-ON” system. Both profile and cover are also available in lengths of up to 6 metres in one single piece.

We also offer models with trellis covers, optics, 3-phase rails for spotlights, recessed and asymmetrical lighting.

Aluminium profiles with an IP65 waterproofing with our “easy-ON” system, for hanging, surfaces and embedding.

Front removable tray with triple safety system (except Múnich Mini, Gales, Gales with optics, Gales with recessed tray, Gales with trellis, Bruselas, Ambarés and Houston).

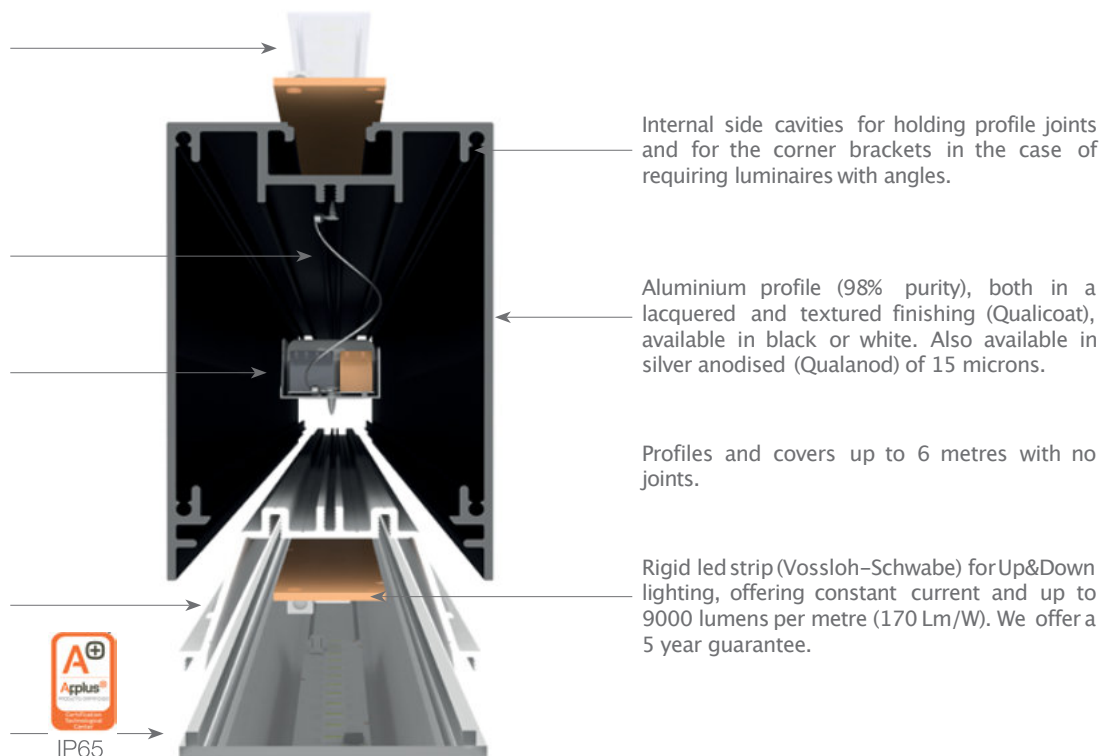
Up&Down cover available in transparent or frosted white.

Safety cable which fixes the removable tray to the profile and also making maintenance easier.

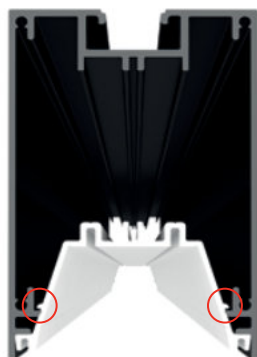
Vossloh-Schwabe power supply with Dali, 1-10V or PUSH controllers, offering a 5 year guarantee.

Aluminium front removable tray with triple safety system (clipping of cover, safety cable and screw).

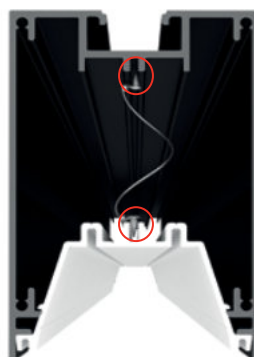
“easy-ON” IP65 cover (European patent), available in opal white, transparent microprism and Black&White.



Front removable tray system with triple fall protection (safety anchorage)



Profile clipping with profile tray



Safety cable to hold tray to profile



Pin screw from tray to profile

Aluminium profiles with our “easy-ON” system, offering an IP65 and designed for hanging, surfaces and embedding.

Front removable tray with triple safety system (except “Mini” models).

MOSCU
MAGNUM



MUNICH
MAGNUM



MOSCU
MAGNUM
SLIM



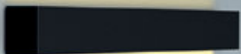
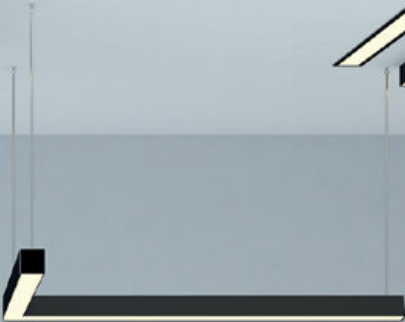
MUNICH
MAGNUM
SLIM



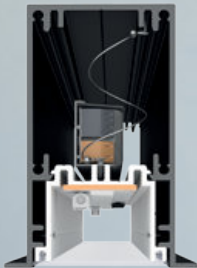
MOSCU
MINI



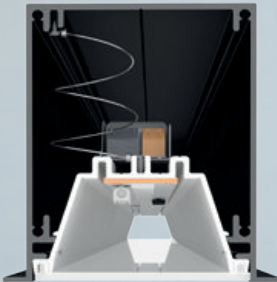
MUNICH
MINI



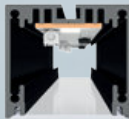
MOSCU
MINI



MOSCU
MAGNUM
SLIM



MOSCU
MAGNUM



MUNICH
MINI



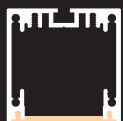
MUNICH
MAGNUM
SLIM



MUNICH
MAGNUM



big profiles for surfaces and hanging



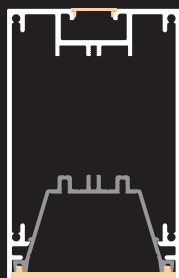
MUNICH
MINI

192



MUNICH
MAGNUM
SLIM

194



MUNICH
MAGNUM

196



MUNICH
SLIM

198



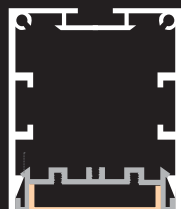
MUNICH

200



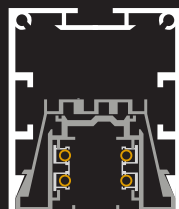
BOX

202



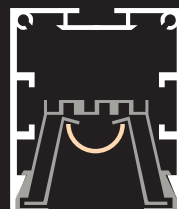
GALES
with OPTIC

203



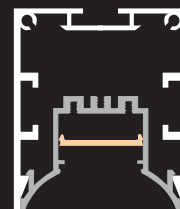
GALES
with tray,
and "Global"
3-phase rail

204



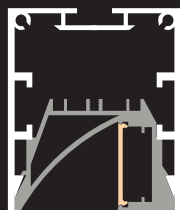
GALES
with tray
and trellis

205



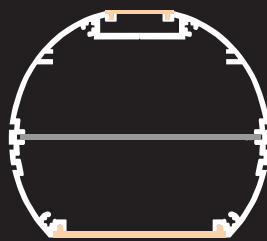
GALES
with RECESSED
TRAY

206



GALES
ASYMMETRIC

207



SICILIA

208



HOUSTON

210



BRUSELAS

211

Our PROFESSIONAL led profiles for surfaces/hanging applications is manufactured in high purity aluminium. It is suitable for using on ceilings or for hanging luminaires and even on walls.

This profile can be combined with our "easy-ON" cover, which offers a waterproofing of IP65 to the luminaire, which is extremely useful in areas with high humidity levels.

We have also available Black&White cover, transparent or frosted microprism which improve glare and UGR levels.

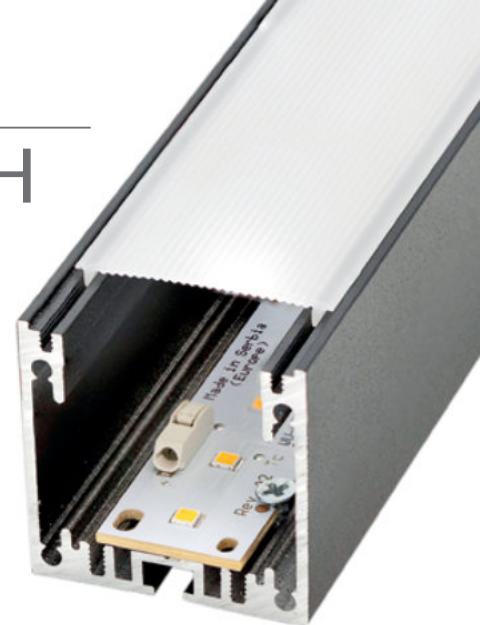
Both profile and cover are available in bars of 6m length, allowing us to carry out long projects with no joints.

We offer 10 years of guarantee on profiles and 4 years of guarantee on covers.

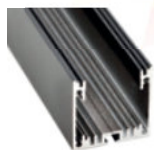
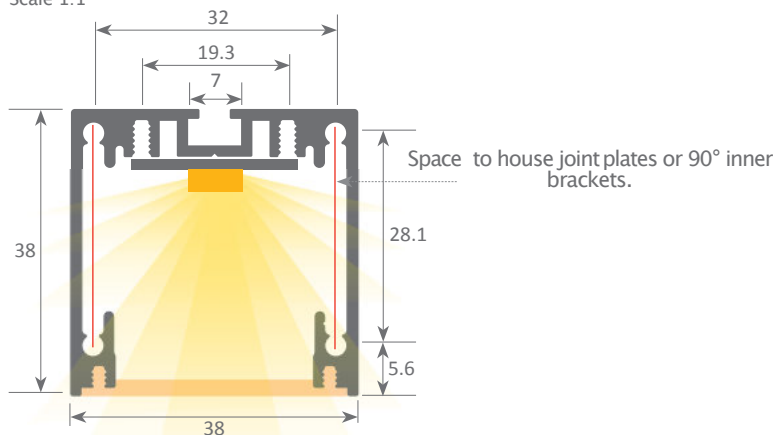
MUNICH MINI



IP65



Scale 1:1



Aluminium profile

16.002	anodised silver	6m
16.003	lacquered black	6m
16.004	lacquered white	6m



Aluminium endcaps

19.228	anodised silver
19.229	lacquered textured black
19.230	lacquered textured white



90° angle bracket

22.035	aluminium	set of 2 units
--------	-----------	----------------



120° angle bracket

22.004	steel
--------	-------



"easy-ON" cover

18.070	"easy-ON" frosted	6m
18.071	transparent microprism	6m
18.072	frosted microprism	6m
18.073	Black&White	6m



Hanging kit

21.001	silver	set of 2 units
21.002	white	set of 2 units
21.003	black	set of 2 units



Inner plate

22.034	aluminium	set of 2 units
--------	-----------	----------------



Flat bracket

22.058	aluminium	set of 2 units
--------	-----------	----------------



Patente Europea
Nº.: 13156605.1

Aluminium alloy extrusion process in accordance with: ISO 9001:2008 -ISO 14001 / Tolerances: UNE-EN 755-9 / UNE-EN 12020-2
Theoretical weight: 0.835kg / Alloy: 6063 / Perimeter: 352mm / Anodising minimum: 15 microns
Purity aluminium: 95-98% / Treatment: T-5 / Covers: Fireproof VØ



Our PROFESSIONAL led profiles for surfaces/hanging applications is manufactured in high purity aluminium and silver anodised. Its inner tray (where we can find the led and the power supply) can be removed from the front which means easy maintenance. It is suitable for hanging, surfaces and walls (providing Up&Down lighting); drivers can be housed inside. This profile can be combined with a white frosted cover ("easy-ON" system), to achieve a waterproofing of IP65 (very necessary in damp zones). We also have available Black&White covers and also microprism versions in transparent or frosted, which improve glare and UGR levels. Both profile and covers are available in lengths of 6m, allowing us to carry out long installations without joints.

We offer a 10 year guarantee on the profiles and 4 year guarantee on the covers.

MUNICH MAGNUM SLIM



IP65



Aluminium profile

17.004	anodised silver	6m
17.005	lacquered white	6m
17.006	lacquered black	6m



Aluminium tray

15.007	lacquered white	6m
--------	-----------------	----



"easy-ON" cover

18.070	"easy-ON" frosted	6m
18.071	transparent microprism	6m
18.072	frosted microprism	6m
18.073	Black&White	6m



Aluminium endcaps without hole

19.234	anodised silver
19.235	lacquered textured white
19.236	lacquered textured black



Methacrylate cover (UP)

18.014	transparent	2m
18.015	frosted	2m
18.016	transparent	6m
18.017	frosted	6m



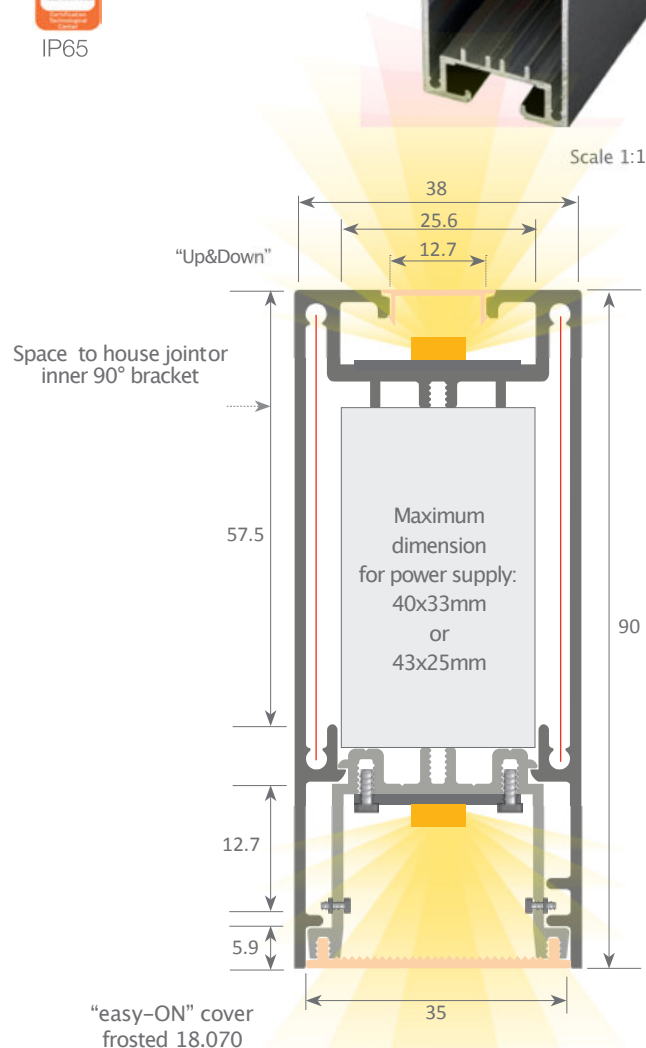
Hanging kit

21.001	silver	set of 2 units
21.002	white	set of 2 units
21.003	black	set of 2 units



Safety cable

22.039	steel 18cm
--------	------------



Patente Europea
Nº.: 13156605.1

Aluminium alloy extrusion process in accordance with: ISO 9001:2008 - ISO 14001 / Tolerances: UNE-EN 755-9 / UNE-EN 12020-2
Theoretical weight: 1.464Kg / Alloy: 6063 / Perimeter: 483mm / Anodising minimum: 15 microns
Purity aluminium: 95-98% / Treatment: T-5 / Covers: Fireproof V0



90° angle bracket
22.049 aluminium

set of 2 units



Flat bracket
22.059 aluminium

set of 2 units



Inner plate
22.050 aluminium

set of 2 units

Our PROFESSIONAL led profiles series for surfaces/hanging applications is manufactured in high purity aluminium and silver anodised. Its inner tray (where we can find the led and the power supply) can be removed from the front which means easy maintenance. It is suitable for hanging, surfaces and walls (providing Up&Down lighting); drivers can be housed inside. This profile can be combined with a white frosted cover ("easy-ON" system), to achieve a waterproofing of IP65 (very necessary in damp zones). We also have available microprism covers both in transparent and frosted, which improve glare and UGR levels. Both profile and covers are available in lengths of 6m, allowing us to carry out long installations without joints.

We offer a 10 year guarantee on the profiles and 4 year guarantee on the covers.

MUNICH MAGNUM



IP65



Aluminium profile

16.008	anodised silver	6m
16.009	lacquered white	6m
16.010	lacquered black	6m



Aluminium tray

14.007	lacquered white	6m
--------	-----------------	----



"easy-ON" cover

18.074	frosted "easy-ON"	6m
18.075	transparent microprism	6m
18.076	frosted microprism	6m



Aluminium endcaps

19.243	anodised silver
19.244	lacquered textured white
19.245	lacquered textured black



Methacrylate cover (UP)

18.014	transparent	2m
18.015	frosted	2m
18.016	transparent	6m
18.017	frosted	6m



Hanging kit

21.001	silver	set of 2 units
21.002	white	set of 2 units
21.003	black	set of 2 units



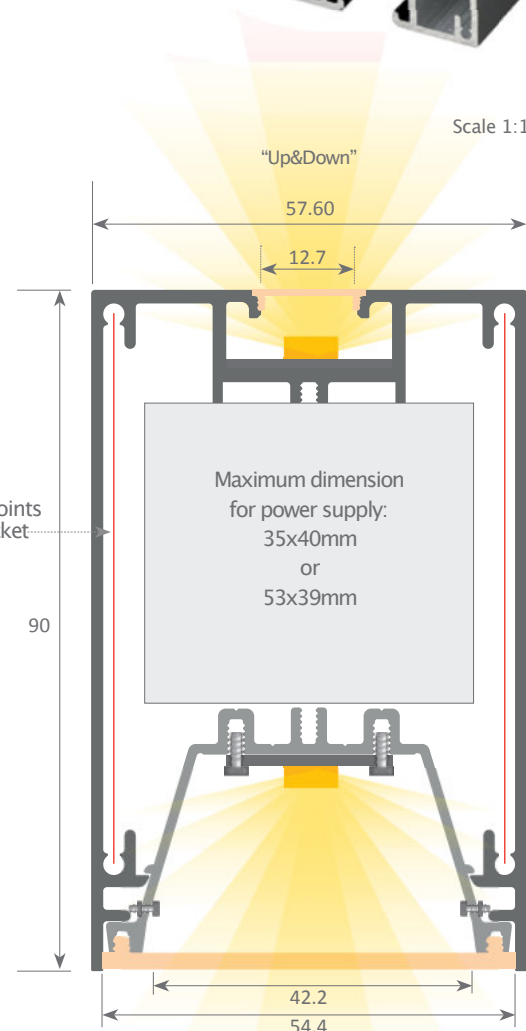
90° angle bracket

22.054	aluminium	set of 2 units
--------	-----------	----------------



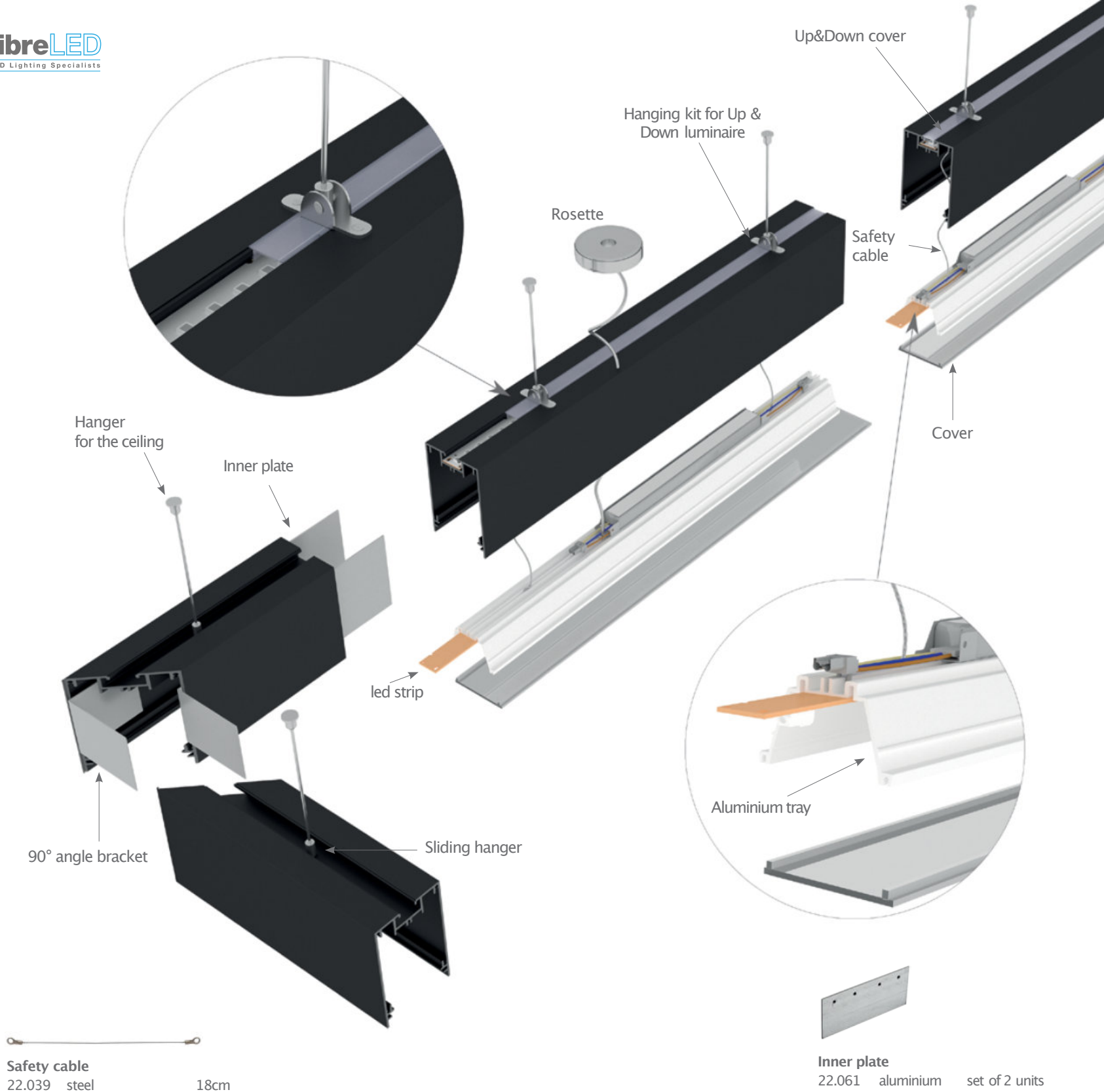
Flat bracket

22.046	aluminium	set of 2 units
--------	-----------	----------------



Patente Europea
Nº.: 13156605.1

Aluminium alloy extrusion process in accordance with: ISO 9001:2008 - ISO 14001 / Tolerances: UNE-EN 755-9 / UNE-EN 12020-2
Theoretical weight: 1.917kg / Alloy: 6063 / Perimeter: 643mm / Anodising minimum: 15 microns
Purity aluminium: 95-98% / Treatment: T-5 / Covers: Fireproof VØ



Our PROFESSIONAL led profiles for surfaces/hanging applications is manufactured in high purity aluminium and silver anodised. It is also supplied in lacquered white or textured black and ideal for using on ceilings or for hanging luminaires and even on walls (providing Up&Down lighting). Drivers can be housed inside.

This profile can be combined with our "easy-ON" frosted white cover, which offers an IP65 to the luminaire, which is extremely useful in areas with high humidity levels (in this case, not suitable for our Black&White profiles). We also have available transparent and frosted microprism covers which improve glare and UGR levels.

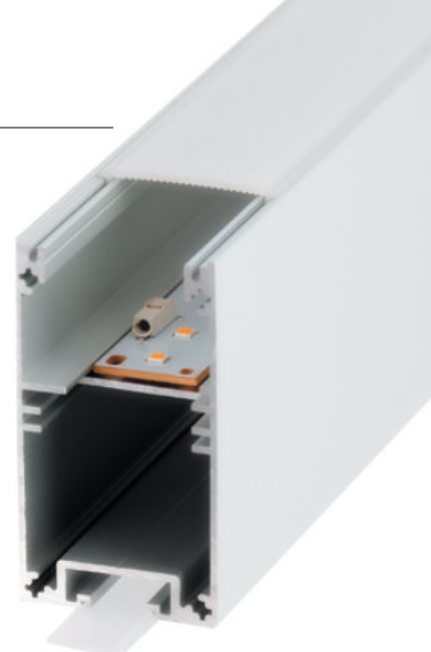
Both profile and cover are available in 6m lengths, allowing us to carry out long installations with no joints.

We offer a 10 year guarantee on the profiles and a 4 year guarantee on the covers.

MUNICH SLIM



IP65



Aluminium profile

17.001	anodised silver	6m
17.002	lacquered black	6m
17.003	lacquered white	6m



Inner plate

22.036	aluminium 200cm
--------	-----------------



"easy-ON" cover

18.070	"easy-ON" frosted	6m
18.071	transparent microprism	6m
18.072	frosted microprism	6m
18.073	Black&White	6m



Aluminium endcaps without hole

19.231	anodised silver
19.232	lacquered textured white
19.233	lacquered textured black



"Up&Down" polycarbonate cover "easy-ON"

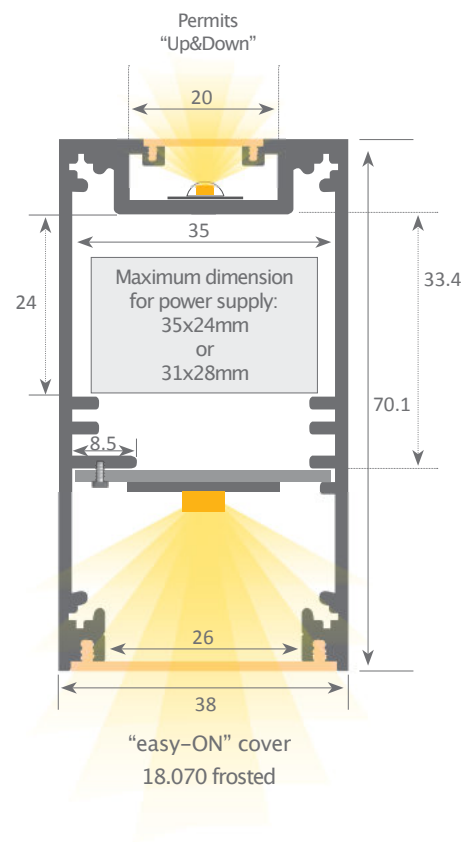
18.001	transparent	2m
18.002	opal	2m
18.008	opaque grey	2m
18.003	frosted	2m
18.004	transparent	6m
18.005	opal	6m
18.006	frosted	6m



Hanging kit

21.001	silver	set of 2 units
21.002	white	set of 2 units
21.003	black	set of 2 units

Scale 1:1



Patente Europea
Nº.: 13156605.1

Aluminium alloy extrusion process in accordance with: ISO 9001:2008 - ISO 14001 / Tolerances: UNE-EN 755-9 / UNE-EN 12020-2
Theoretical weight: 1.16 Kg / Alloy: 6063 / Perimeter: 524mm / Anodising minimum: 15 microns
Purity aluminium: 95-98% / Treatment: T-5 / Covers: Fireproof V0



Our PROFESSIONAL led profiles for surfaces/hanging applications is manufactured in high purity aluminium and silver anodised. It is also supplied in lacquered white or textured black and ideal for using on ceilings or for hanging luminaires and even on walls (providing Up&Down lighting). Drivers can be housed inside.

This profile can be combined with our "easy-ON" frosted white cover, which offers an IP65 to the luminaire, which is extremely useful in areas with high humidity levels (in this case, not suitable for our Black&White profiles). We also have available transparent and frosted microprism covers which improve glare and UGR levels.

Both profile and cover are available in 6m lengths, allowing us to carry out long installations without joints.

We offer a 10 year guarantee on the profiles and a 4 year guarantee on the covers.

MUNICH



IP65



Scale 1:1



Aluminium profile

16.005	anodised silver	6m
16.006	lacquered black	6m
16.007	lacquered white	6m



Inner plate 200cm

22.042	aluminium	
22.051	for 40mm optic rigid strips	



"easy-ON" covers

18.074	frosted "easy-ON"	6m
18.075	transparent microprism	6m
18.076	frosted microprism	6m



Aluminium endcaps

19.237	silver anodised	set of 2 units
19.238	lacquered black	set of 2 units
19.239	lacquered white	set of 2 units



Up&Down covers

18.001	transparent	2m
18.002	opal	2m
18.003	frosted	2m
18.004	transparent	6m
18.005	opal	6m
18.006	frosted	6m



Plastic endcaps without hole

19.240	grey	
19.241	black	
19.242	white	



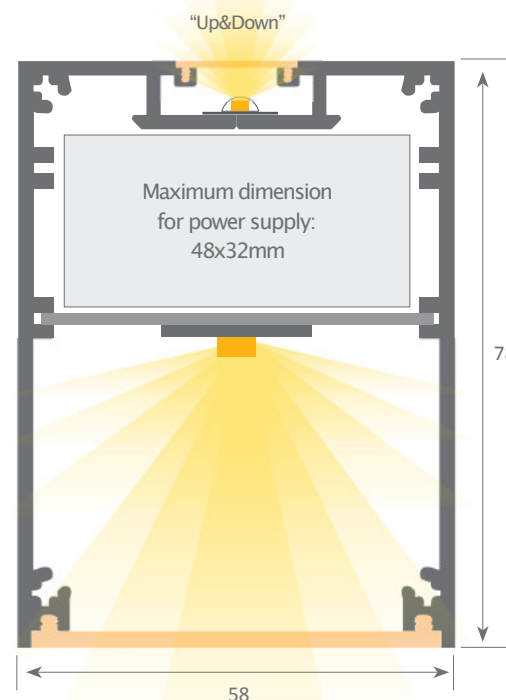
Hanging kit

21.001	silver	set of 2 units
21.002	white	set of 2 units
21.003	black	set of 2 units



Safety cable

22.039	steel	18cm
--------	-------	------



Patente Europea
Nº.: 13156605.1

Aluminium alloy extrusion process in accordance with: ISO 9001:2008 -ISO 14001 / Tolerances: UNE-EN 755-9 / UNE-EN 12020-2
Theoretical weight: 1.350Kg / Alloy: 6063 / Perimeter: 604mm / Anodising minimum: 15 microns
Purity aluminium: 95-98% / Treatment: T-5 / Covers: Fireproof V0

“UGR” covers



TRELIS cover



SMOOTH cover



MICROPRISMATIC cover



STRIPED LINE cover

New microprismatic covers

The type of cover we choose for a luminaire doesn't only affect its appearance or its light transmission capacities, but also the Unified Glare Ratings (whose acronym is UGR).

Formula for the calculation of the UGR

$$UGR = 8 \log \left[\frac{0.25}{L_b} \sum \left(\frac{L^2 \omega}{p^2} \right) \right]$$

The UGR, (Unified Glare Rating) quantifies the amount of glare inflicted by a source of light by applying a numerical value which ranges between 10 and 30 (where 10 defines an absence of glare, while on other hand, 30 is the cipher applied when glare reaches its peak value).

Some projects require an in-depth knowledge of this concept in order to be executed.

In theory, glare values depend on the quantity, position, brightness and size of the glaring light sources and the types of lighting which the human eye is accustomed to. In the case of luminaires which have lamps fully or partially visible according to the range of critical viewing angles, not only should they be limited to their average brightness, but also the lamps should have adequate covers.

Standard covers (smooth) may not comply with UGR values on the basis of current standards (see pages 346 and 347).

Luz Negra's new transparent, frosted and opal microprismatic covers manage to reduce the UGR, obtaining lower glare rates and at the same time scattering the luminaire's inner light. Therefore we achieve almost the double amount of light transmission than with an opal white cover.

Here at Luz Negra we can also supply metal covers, also referred to as trellis covers, which optimize the use of light, while also improving considerably the UGR rating.

Here in our headquarters at Barcelona we have a laboratory which offers a Dark Room and also a goniometre, while at the same time it is equipped with all the technical means necessary to carry out UGR measurements.



New microprismatic transparent covers

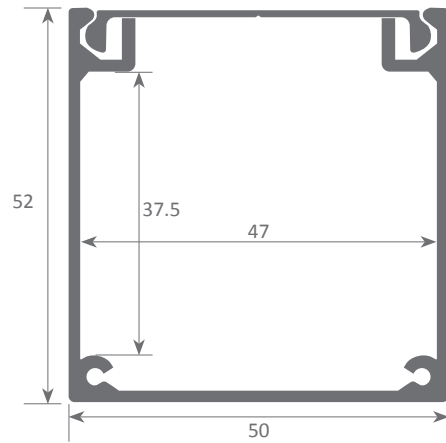


A linear led profile, consisting of a base and aluminium cover, whose objective is to conceal accessories like power supplies, controllers, connection strips, etc. It is mainly used for ceiling mounting in order to hide the power supplies in the case of smaller luminaires which aren't big enough to house them inside their structure. We offer a 2 year guarantee.

BOX



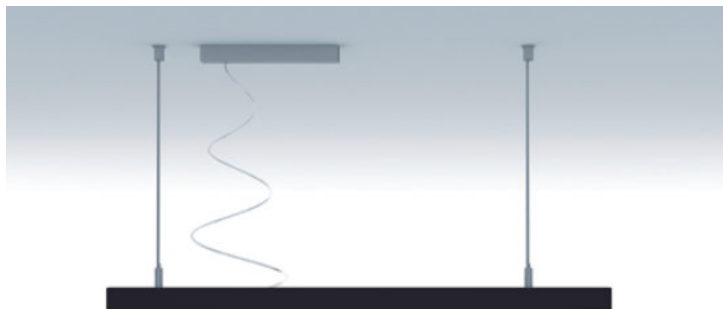
Scale 1:1



Aluminium profile
16.001 anodised silver 4m



Aluminium endcaps
19.212 anodised silver



GALES with OPTIC

Our PROFESSIONAL led profiles series for surfaces/hanging applications is manufactured in high purity aluminium and lacquered in textured white, black and grey. Drivers can be housed inside.

This profile can be used with different types of optics (see page 305).

The internal tray allows us to screw the rigid led strip on one side and enables us to house the power supply on the other. At the same time this tray can be removed from the front which means easy maintenance. For safety measures, we recommend the fixing of a braided cable from the profile base to the dissipation tray. Both profile and cover are available in 3.4 metre lengths.

We offer a 2 year guarantee on the profiles and covers.



Aluminium profile

16.011	lacquered grey	3.40m
16.012	lacquered white	3.40m
16.013	lacquered black	3.40m



Internal tray

14.014	textured grey	3.40m
14.015	textured white	3.40m



Optic

See page 307



Profile joints

22.044	steel	set of 2 units
--------	-------	----------------



Aluminium endcaps

19.246	grey
19.247	white
19.248	black



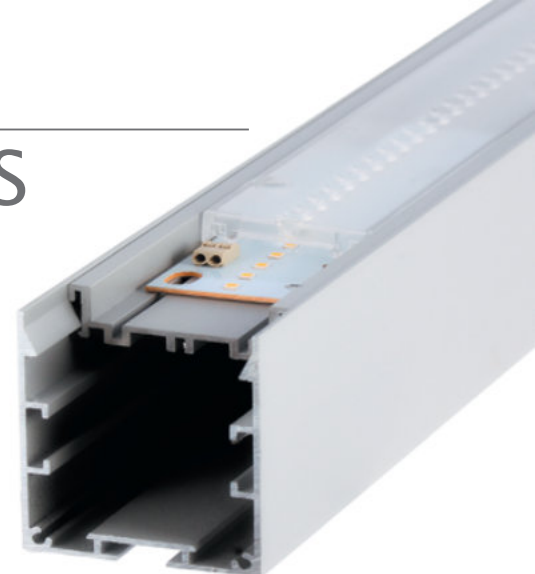
Hanging kit

21.001	silver	set of 2 units
21.002	white	set of 2 units
21.003	black	set of 2 units

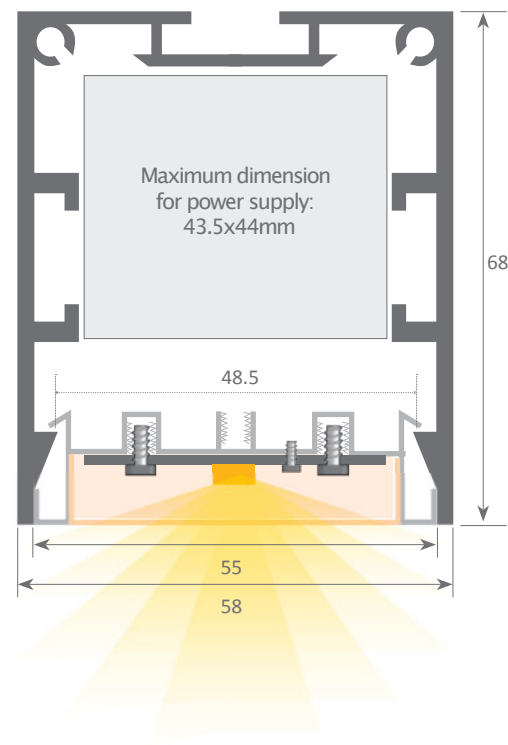


Safety cable

22.039	steel	18cm
--------	-------	------



Scale 1:1



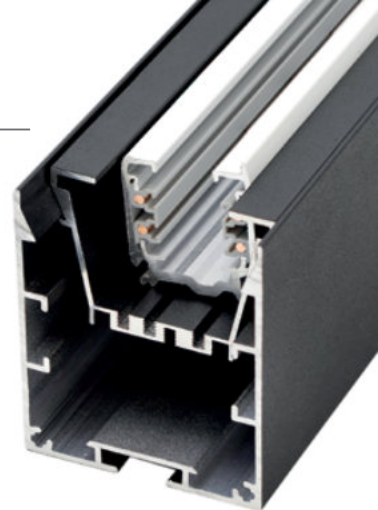
Aluminium alloy extrusion process in accordance with: ISO 9001:2008 - ISO 14001 / Tolerances defined by: UNE-EN 755-9 / UNE-EN 12020-2
Theoretical weight: 1.126 Kg. / Alloy: 6063 / Perimeter: 514 / Anodising minimum: 15 microns
Purity aluminium: 95-98% / Treatment: T-5

Our PROFESSIONAL led profiles for surfaces/hanging applications is manufactured in high purity aluminium and lacquered in white or textured black. Drivers can be housed inside.

The tray can be removed from the front which means easy maintenance. Also, this tray can be combined also with a "Global" 3 phase rail in order to hang spotlights. For safety measures, we recommend fixing a braided cable from the profile base to the tray. Both profile and cover are available in 3.4m lengths.

We offer a 2 year guarantee on the profiles and covers.

GALES with tray and "Global" 3-phase rail



Aluminium profile

16.012 lacquered white 3.40m
16.013 lacquered black 3.40m



Profile joints

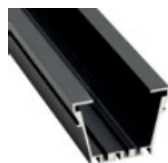
22.044 steel

set of 2 units



Trellis

16.016 textured white 1.124m
16.017 textured black 1.124m



Aluminium tray

14.016 textured white 3.40m
14.017 textured black 3.40m



Scale 1:1



Aluminium endcaps

19.246 grey
19.247 white
19.248 black



Hanging kit

21.001 silver
21.002 white
21.003 black

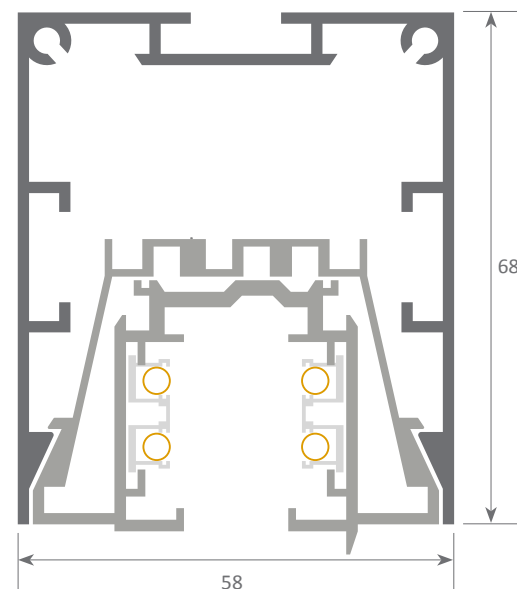
set of 2 units
set of 2 units
set of 2 units



Safety cable

22.039 steel

18cm



Aluminium alloy extrusion process in accordance with: ISO 9001:2008 - ISO 14001 / Tolerances defined by: UNE-EN 755-9 / UNE-EN 12020-2
Theoretical weight: 1.202Kg / Alloy: 6060 / Perimeter: 552mm / Anodising minimum: 15 microns
Purity aluminium: 95-98% / Treatment: T-5

Our PROFESSIONAL led profiles for surfaces/hanging applications is manufactured in high purity aluminium and lacquered in white or textured black. Drivers can be housed inside.

The internal tray allows us to screw the rigid led strip on one side and enables us to house the power supply on the other. At the same time this tray can be removed from the front which means easy maintenance. For safety measures, we recommend fixing a braided cable from the profile base to the tray. Both profile and cover are available in 3.4m lengths.

We offer a 2 year guarantee on the profiles and covers.

GALES

with tray and trellis



Aluminium profile

16.012	lacquered white	3.40m
16.013	lacquered black	3.40m



Aluminium tray

14.016	textured white	3.40m
14.017	textured black	3.40m



Trellis

16.016	textured white	1.124m
16.017	textured black	1.124m



Profile joints

22.044	steel	set of 2 units
--------	-------	----------------



Aluminium endcaps

19.246	grey
19.247	white
19.248	black



Hanging kit

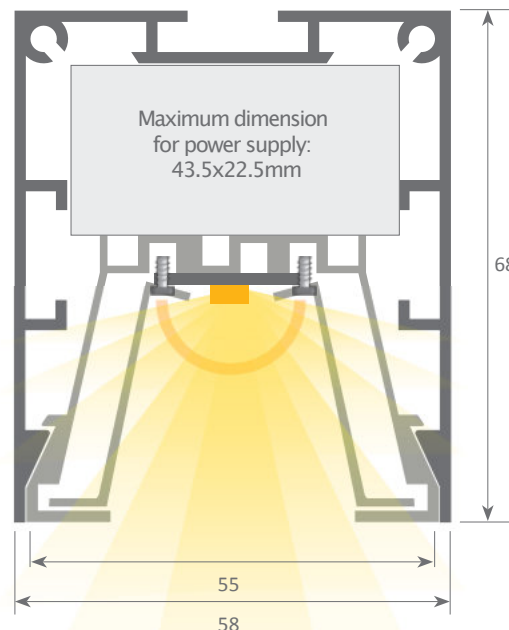
21.001	silver	set of 2 units
21.002	white	set of 2 units
21.003	black	set of 2 units



Safety cable

22.039	steel	18cm
--------	-------	------

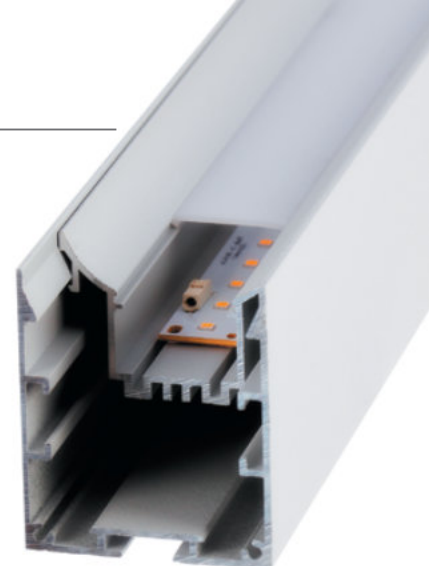
Scale 1:1



Aluminium alloy extrusion process in accordance with: ISO 9001:2008 - ISO 14001 / Tolerances defined by: UNE-EN 755-9 / UNE-EN 12020-2
Theoretical weight: 1.202Kg / Alloy: 6060 / Perimeter: 552mm / Anodising minimum: 15 microns
Purity aluminium: 95-98% / Treatment: T-5

Our PROFESSIONAL led profileseries for surfaces/hanging applications is manufactured in high purity aluminium and lacquered in textured white, black and grey. Drivers can be housed inside. The internal tray allows us to screw the rigid led strip on one side and enables us to house the power supply on the other. At the same time this tray can be removed from the front which means easy maintenance. For safety measures, we recommend the fixing of a braided cable from the profile base to the dissipation tray. Both profile and cover are available in 3.4 metre lengths. We offer a 2 year guarantee on the profiles and covers.

GALES with RECESSED TRAY



Aluminium profile

16.011	lacquered grey	3.40m
16.012	lacquered white	3.40m
16.013	lacquered black	3.40m



Recessed tray

14.018	textured grey	3.40m
14.019	textured white	3.40m
14.025	textured black	3.40m



Cover

18.079	frosted	3.40m
--------	---------	-------



Profile joints

22.044	steel	set of 2 units
--------	-------	----------------



Aluminium endcaps

19.246	grey
19.247	white
19.248	black



Hanging kit

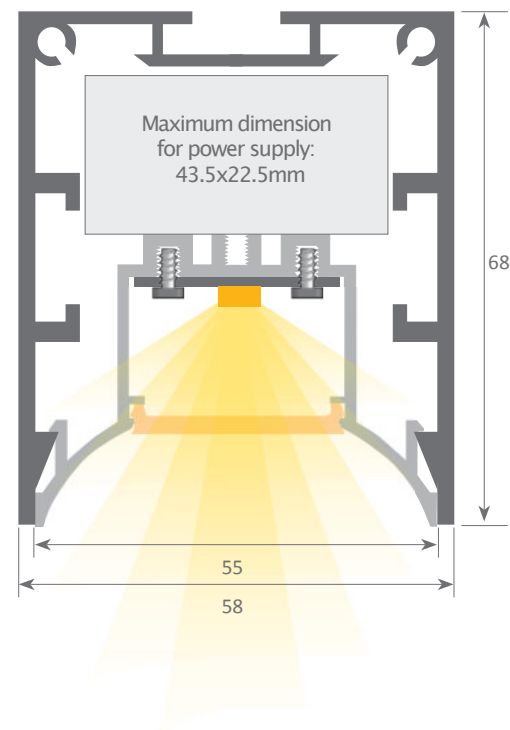
21.001	silver	set of 2 units
21.002	white	set of 2 units
21.003	black	set of 2 units



Safety cable

22.039	steel	18 cm
--------	-------	-------

Scale 1:1



Aluminium alloy extrusion process in accordance with: ISO 9001:2008 - ISO 14001 / Tolerances defined by: UNE-EN 755-9 / UNE-EN 12020-2
Alloy: 6060 / Anodising minimum: 15 microns / Purity aluminium: 95-98% / Treatment: T-5

Our PROFESSIONAL led profileseries for surfaces/hanging applications is manufactured in high purity aluminium and lacquered in textured white, black and grey. Drivers can be housed inside.

The internal tray allows us to screw the rigid led strip on one side and enables us to house the power supply on the other. At the same time this tray can be removed from the front which means easy maintenance. For safety measures, we recommend the fixing of a braided cable from the profile base to the dissipation tray. Both profile and cover are available in 3.4 metre lengths.

We offer a 2 year guarantee on the profiles and covers.

GALES ASYMMETRIC



Aluminium profile

16.012	lacquered white	3.40m
16.013	lacquered black	3.40m
16.011	lacquered grey	3.40m



Trellis

14.022	textured white	3.40m
14.023	textured black	3.40m
14.024	textured grey	3.40m



Cover

18.103	frosted	3.40m
--------	---------	-------



Aluminium endcaps

19.246	grey
19.247	white
19.248	black



Profile joints

22.044	steel	set of 2 units
--------	-------	----------------



Hanging kit

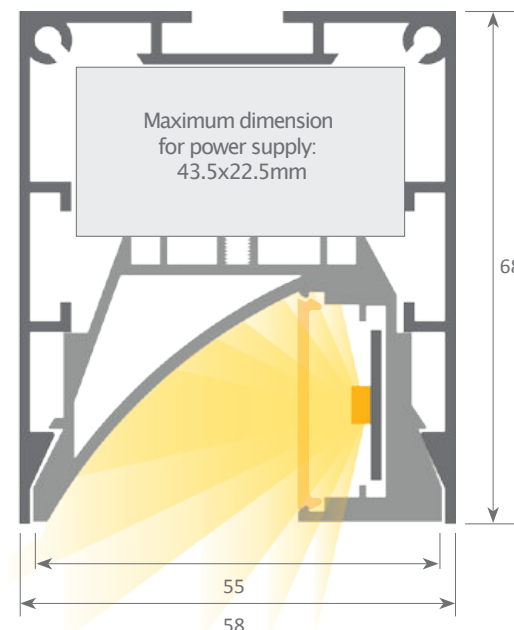
21.001	silver	set of 2 units
21.002	white	set of 2 units
21.003	black	set of 2 units



Safety cable

22.039	steel	18cm
--------	-------	------

Scale 1:1



Aluminium alloy extrusion process in accordance with: ISO 9001:2008 - ISO 14001 / Tolerances defined by: UNE-EN 755-9 / UNE-EN 12020-2
Theoretical weight: 1.202Kg / Alloy: 6060 / Perimeter: 552mm / Anodising minimum: 15 microns
Purity aluminium: 95-98% / Treatment: T-5

Our PROFESSIONAL led profile series for hanging applications is manufactured in high purity aluminium and silver anodised, and provides up & down lighting. Drivers can be housed inside. This profile can be combined with our "easy-ON" frosted white cover, which offers an IP65 to the luminaire, which is extremely useful in areas with high humidity levels. We also have available transparent and frosted microprisma covers which improve glare and UGR levels. Both profile and cover are available in 6 metre lengths which means that long installations can be carried out without any joints.

We offer a 10 year guarantee on the profiles and a 4 year guarantee on the covers.

SICILIA



IP65



Aluminium profile

13.021 anodised silver 6m



Inner plate

22.055 wide 200cm
22.056 narrow 200cm



"easy-ON" cover (Down)

18.067 frosted 6m
18.068 transparent 6m
18.069 frosted microprismatic 6m



Aluminium endcaps

19.106 anodised silver



"easy-ON" cover (Up)

18.001 transparent 2m
18.002 opal 2m
18.003 frosted 2m
18.004 transparent 6m
18.005 opal 6m
18.006 frosted 6m

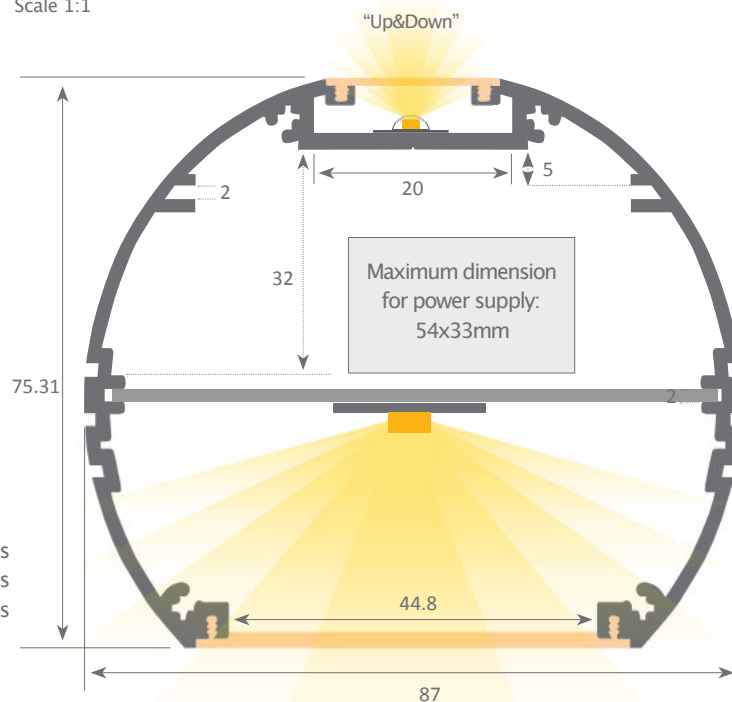


Hanging kit

21.001 silver
21.002 white
21.003 black

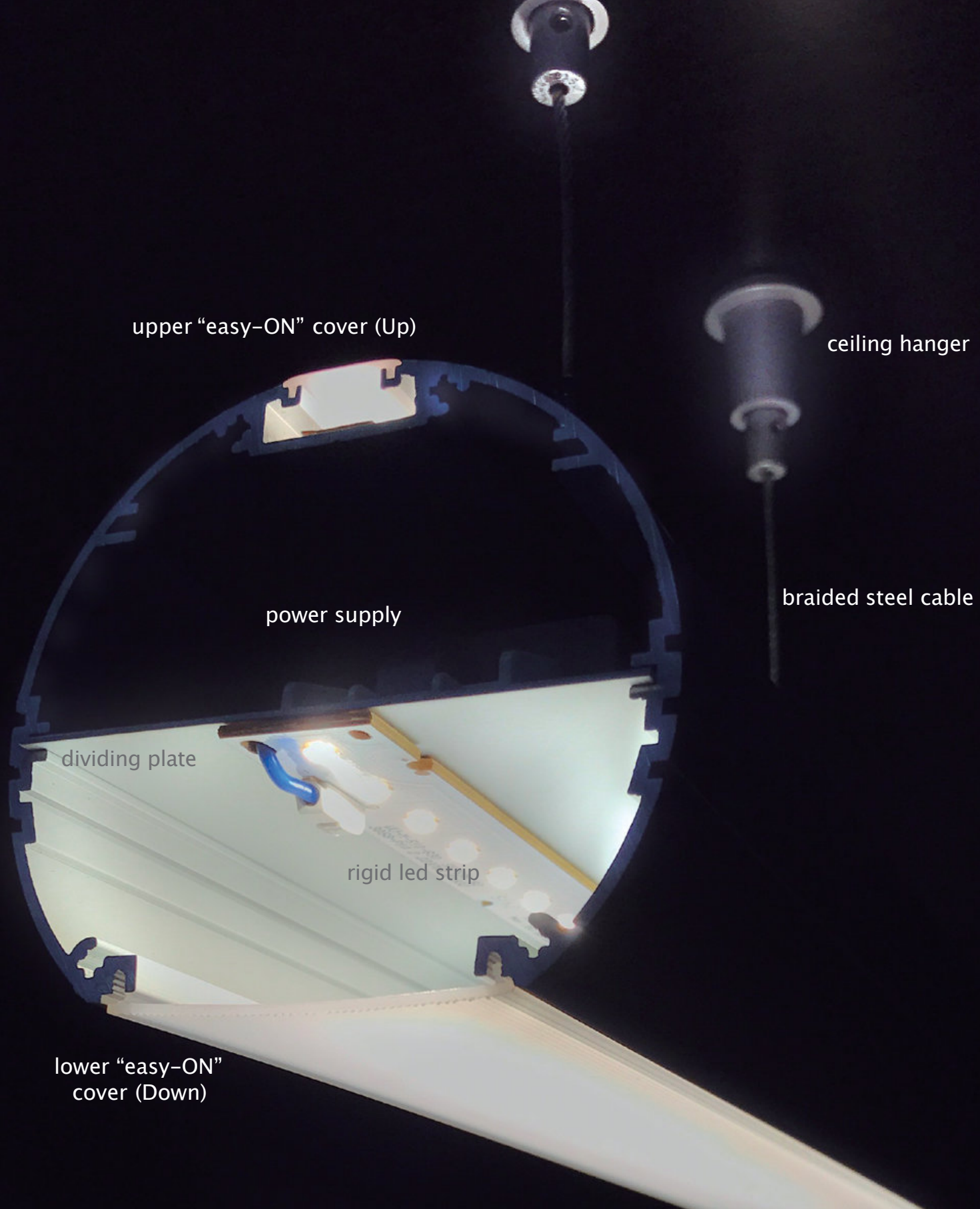
set of 2 units
set of 2 units
set of 2 units

Scale 1:1



Patente Europea
Nº.: 13156605.1

Aluminium alloy extrusion process in accordance with: ISO 9001:2008 - ISO 14001 / Tolerances defined by: UNE-EN 755-9 / UNE-EN 12020-2
Theoretical weight: 1.539Kg / Alloy: 6063 / Perimeter: 627mm / Anodising minimum: 15 microns
Purity aluminium: 95-98% / Treatment: T-5



upper "easy-ON" cover (Up)

ceiling hanger

power supply

braided steel cable

dividing plate

rigid led strip

lower "easy-ON"
cover (Down)

HOUSTON

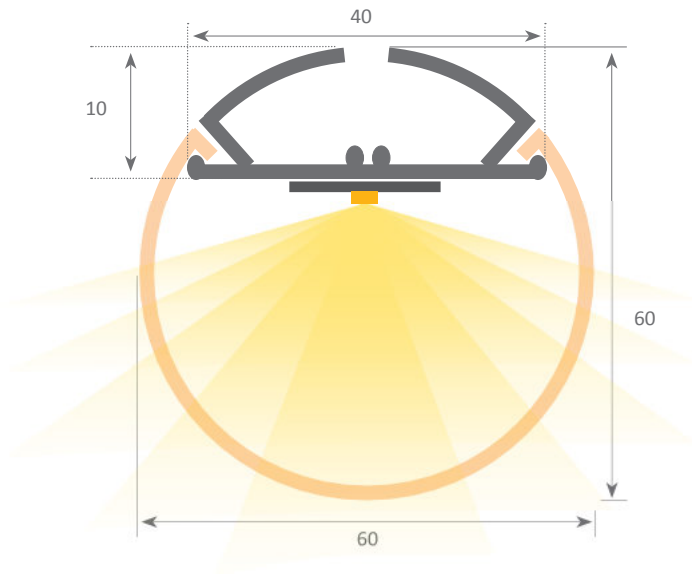
Our PROFESSIONAL led profile series for hanging applications is manufactured in high purity aluminium and silver anodised. Drivers cannot be housed inside.

This profile, when combined with a very large opal white cover, offers a very high level of luminosity.

Both profile and cover are available in 3 metre lengths.

We offer a 2 year guarantee on our profiles and covers.

Scale 1:1



Aluminium profile
13.022 anodised silver 3m



Plastic endcaps
19.107 without hole
19.108 with hole



Cover
18.069 opal 3m



Hanging kit
21.001 silver set of 2 units
21.002 white set of 2 units
21.003 black set of 2 units



Aluminium alloy extrusion process in accordance with: ISO 9001:2008 - ISO 14001 / Tolerances defined by: UNE-EN 755-9 / UNE-EN 12020-2
Theoretical weight: 0.381Kg / Alloy: 6063 / Perimeter: 141.8mm / Anodising minimum: 15 microns
Purity aluminium: 95-98% / Treatment: T-5 / Covers: Fireproof V0

Our PROFESSIONAL led profileseries for surfaces/hanging applications is manufactured in high purity aluminium and lacquered in textured white or grey. This is a very wide profile which permits us to install a double rigid led strip in order to achieve high levels of luminosity (especially indicated for shopping malls, supermarkets, etc.).

Drivers can be housed inside. The covers are available in frosted white. Both profile and cover are available in 3.4m lengths.

We offer a 2 year guarantee on the profiles and covers.

BRUSELAS



Aluminium profile

16.014 textured grey 3.40m
16.015 textured white 3.40m



Inner plate

22.045 aluminium



Cover

18.080 frosted 3.40m



Aluminium endcaps

19.249 grey
19.250 white



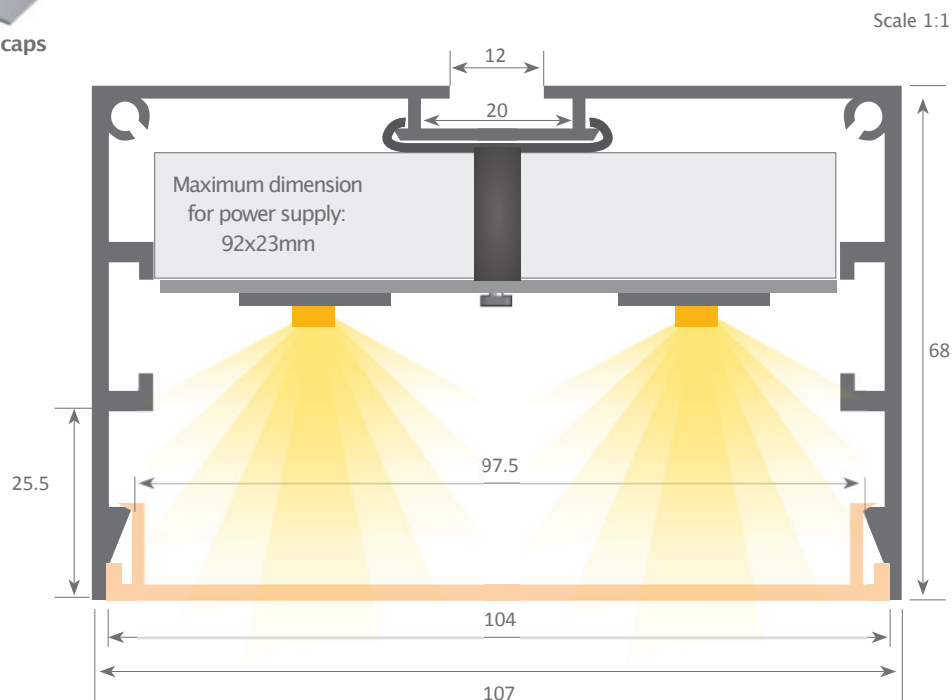
Profile joint

22.044 steel set of 2 units



Support plate

22.047 steel



Aluminium alloy extrusion process in accordance with: ISO 9001:2008 - ISO 14001 / Tolerances defined by: UNE-EN 755-9 / UNE-EN 12020-2
Theoretical weight: 1.323Kg / Alloy: 6063 / Perimeter: 612mm / Anodizing minimum: 15 microns
Purity aluminium: 95-98% / Treatment: T-5