

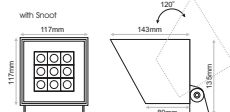
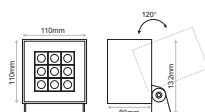


EXTERIOR PROJECTORS

Box series of outdoor spotlights consists of a complete series of 5 different models in terms of consumption, available with accessories for different installations. Ideal for minimal architectural applications with low glare level due to the design of the luminaire and the extra snoot accessory. It is available in black or white colour as standard but custom RAL colours are also available upon request. Marine treatment is also offered upon request ensuring higher resistance to weather, UV, water and mould growth.

- Ingress Protection: IP66
- IK Rate: IK06
- Glare Rating: UGR <12 (14°), <12.5 (16°), <9.3 (20°), <19.9 (34°), <23.4 (60°), <16.2 (16°x30°)
- Phase Cut Dimmable or Non-Dimmable
- Power cable: H05RN-F 3x0.75mm² L=2.0m
- Outer cable diameter: 7mm²
- Weight: 1,53kg

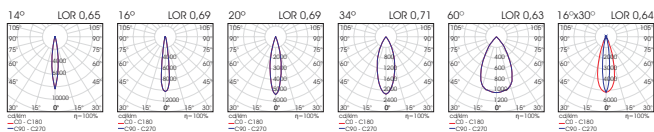
L90/B10 50.000h



Model	CCT	LED Source	Beam Angle	Colour	Dimming Option	Accessories
BOX 20.7W (BOX 21)	2700K (27C)	2223lm	14° (VH)	Black (BL)	230VAC Non-Dimmable (230ND)	cover Standard (0/1) SNOOT Black (1/1) SNOOT White (2/1) ↓ [XX] extras No Extras (1/0) Spike (1/1) Concrete Base (1/2) Belt (1/3) Pole Base (1/4)
	3000K (30C)	2377lm	16° (NR)	White (WH)	230VAC Phase Cut Dimmable* (230D)	
	4000K (40C)	2377lm	20° (MD)			
	6500K (65C)	2668lm	34° (WD)			
			60° (VW)			
			16°x30° (AS)			

* By trailing edge dimmers.

Ordering Code Example: BOX 21-30C-NR-BL-230D-01



Tilt: 120°
Rotate: 60°



ACR.008
Plastic Spike



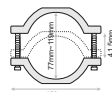
ACR.009
Concrete base



ACR.078
Belt Accessory



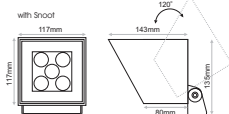
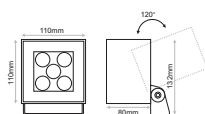
ACR.062
Pole Base



Box series of outdoor spotlights consists of a complete series of 5 different models in terms of consumption, available with accessories for different installations. Ideal for minimal architectural applications with low glare level due to the design of the luminaire and the extra snoot accessory. It is available in black or white colour as standard but custom RAL colours are also available upon request. Marine treatment is also offered upon request ensuring higher resistance to weather, UV, water and mould growth.

- Ingress Protection: IP66
- IK Rate: IK06
- Glare Rating: UGR <17.3 (6°)
- Phase Cut Dimmable or Non-Dimmable.
- Power cable: H05RN-F 3x0.75mm² L=2.0m
- Outer cable diameter: 7mm²
- Weight: 1,53kg

L90/B10 50.000h



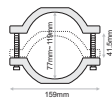
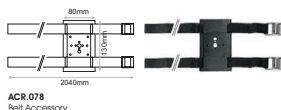
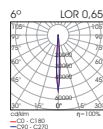
Model	CCT	LED Source	Beam Angle	Colour	Dimming Option	Accessories
BOX 12.5W Narrow (BOX 12N)	2700K (27C)	1235lm	6° (VNI)	Black (BL)	230VAC Non-Dimmable (230ND)	cover
	3000K (30C)	1321lm		White (WH)	230VAC Phase Cut Dimmable* (230D)	Standard (0/)
	4000K (40C)	1321lm				SNOOT Black (1/)
	6500K (65C)	1482lm				SNOOT White (2/)
						↓ (XX) ↑
						extras
						No Extras (0/)
						Spike (1/)
						Concrete Base (2/)
						Belt (3/)
						Pole-Rise (4/)

* By trailing edge dimmers.

Ordering Code Example: BOX 12N-30C-VN-BL-230D-01



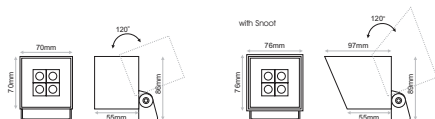
Tilt: 120°
Rotate: 60°



Box series of outdoor spotlights consists of a complete series of 5 different models in terms of consumption, available with accessories for different installations. Ideal for minimal architectural applications with low glare level due to the design of the luminaire and the extra snoot accessory. It is available in black or white colour as standard but custom RAL colours are also available upon request. Marine treatment is also offered upon request ensuring higher resistance to weather, UV, water and mould growth.

- Ingress Protection: IP66
- IK Rate: IK06
- Glare Rating: UGR <13.7 (17°), <13.1 (21°), <12.5 (25°), <20.6 (35°), <23.6 (62°), <15.7 (16°x30°)
- Phase Cut Dimmable or Non-Dimmable.
- Power cable: H05RN-F 3x0.75mm² L=2.0m
- Outer cable diameter: 7mm²
- Weight: 0,63kg

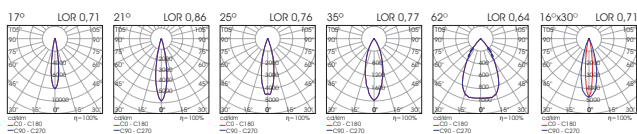
L90/B10 50.000h



Model	CCT	LED Source	Beam Angle	Colour	Dimming Option	Accessories
BOX 9.2W (BOX 10)	2700K (27C)	988lm	17° (VW)	Black (BL)	230VAC Non-Dimmable (230ND)	cover Standard (0/1) SNOOT Black (1/1) SNOOT White (2/1) [XX] extras No Extras (-/0) Spike (-/1) Belt (-/2) Pole Base (-/3)
	3000K (30C)	1056lm	21° (NR)	White (WH)	230VAC Phase Cut Dimmable* (230D)	
	4000K (40C)	1056lm	25° (MD)			
	6500K (65C)	1185lm	35° (WD)			
			62° (VW)			
			16°x30° (AS)			

* By leading edge dimmers only.

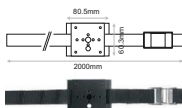
Ordering Code Example: BOX 10-30C-NR-BL-230D-01



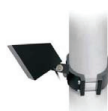
Tilt: 120°
Rotate: 60°



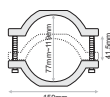
ACR.003
Plastic Spike



ACR.077
Belt Accessory



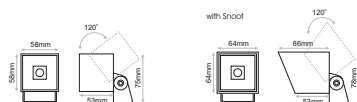
ACR.062
Pole Base



Box series of outdoor spotlights consists of a complete series of 5 different models in terms of consumption, available with accessories for different installations. Ideal for minimal architectural applications with low glare level due to the design of the luminaire and the extra snoot accessory. It is available in black or white colour as standard but custom RAL colours are also available upon request. Marine treatment is also offered upon request ensuring higher resistance to weather, UV, water and mould growth.

- Ingress Protection: IP66
- IK Rate: IK06
- Glare Rating: UGR <15.6 (17°), <13.9 (21°), <15.5 (28°), <23.3 (40°), <25.2 (63°), <17.7 (16°x30°)
- Phase Cut Dimmable
- Power cable: H05RN-F 3x0.75mm² L=2.0m
- Outer cable diameter: 7mm²
- Weight: 0,50kg

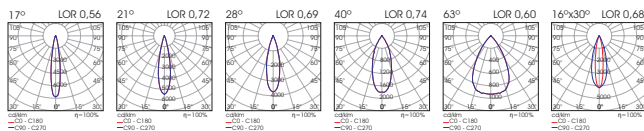
L90/B10 50.000h



Model	CCT	LED Source	Beam Angle	Colour	Dimming Option	Accessories
BOX 4.4W <i>(BOX 5)</i>	2700K <i>(27C)</i>	410lm	17° <i>(VN)</i>	Black <i>(BL)</i>	230VAC Phase Cut Dimmable* <i>(230D)</i>	cover
	3000K <i>(30C)</i>	440lm	21° <i>(NR)</i>	White <i>(WH)</i>		Standard <i>(0/1)</i>
	4000K <i>(40C)</i>	475lm	28° <i>(MD)</i>			SMOOT Black <i>(1/1)</i>
	6500K <i>(65C)</i>	510lm	40° <i>(WD)</i>			SMOOT White <i>(2/2)</i>
			63° <i>(VW)</i>			<i>(XX)</i>
			16°x30° <i>(AS)</i>			
				extras		
				No Extras <i>(1/0)</i>		
				Spike <i>(1/1)</i>		
				Belt <i>(1/2)</i>		
				Pole Base <i>(1/3)</i>		

* By trailing edge dimmers.

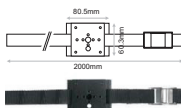
Ordering Code Example: BOX 5-30C-NR-BL-230D-01



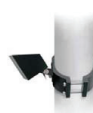
Tilt: 120°
Rotate: 60°



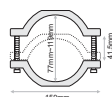
ACR.003
Plastic Spike



ACR.077
Belt Accessory



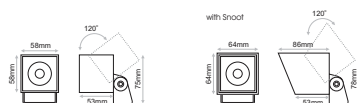
ACR.062
Pole Base



Box series of outdoor spotlights consists of a complete series of 5 different models in terms of consumption, available with accessories for different installations. Ideal for minimal architectural applications with low glare level due to the design of the luminaire and the extra snoot accessory. It is available in black or white colour as standard but custom RAL colours are also available upon request. Marine treatment is also offered upon request ensuring higher resistance to weather, UV, water and mould growth.

- Ingress Protection: IP66
- IK Rate: IK06
- Glare Rating: UGR <18.6 (3°)
- Phase Cut Dimmable
- Power cable: H05RN-F 3x0.75mm² L=2.0m
- Outer cable diameter: 7mm²
- Weight: 0,50kg

L80/B10 50.000h



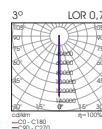
Model	CCT	LED Source	Beam Angle	Colour	Dimming Option	Accessories
BOX 2.5W Narrow <i>(BOX 3N)</i>	2700K <i>(27C)</i>	137lm	3° <i>(VH)</i>	Black <i>(BL)</i>	230VAC Phase Cut Dimmable* <i>(230D)</i>	cover
	3000K <i>(30C)</i>	145lm		White <i>(WH)</i>		Standard <i>(0/1)</i>
	4000K <i>(40C)</i>	170lm				SNOOT Black <i>(1/1)</i>
	6500K <i>(65C)</i>	265lm				SNOOT White <i>(2/1)</i>
						↓ extras <i>(XX)</i> ↑
						No Extras <i>(1/0)</i>
						Spike <i>(1/1)</i>
						Belt <i>(1/2)</i>
						Pole Base <i>(1/3)</i>

* By trailing edge dimmers.

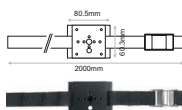
Ordering Code Example: *BOX 3N-30C-VN-BL-230D-01*



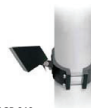
Tilt: 120°
Rotate: 60°



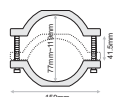
ACR.003
Plastic Spike



ACR.077
Belt Accessory



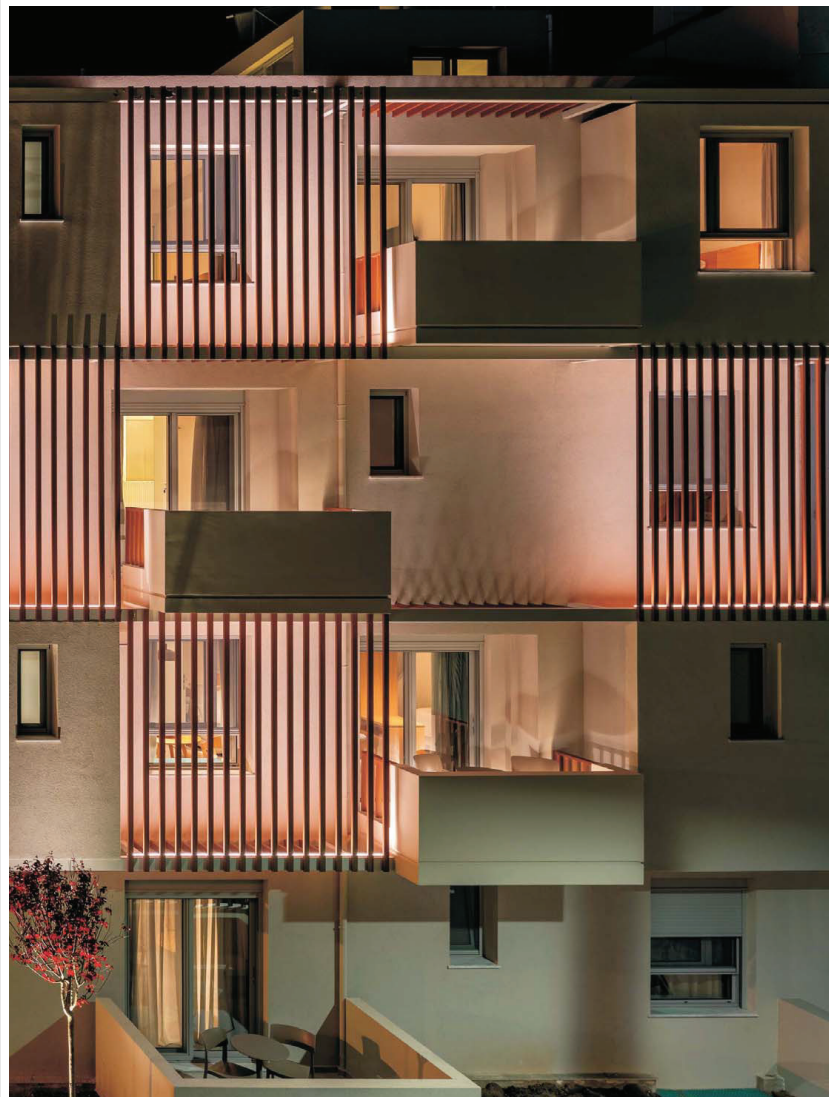
ACR.062
Pole Base



Townhouse, Lefkada, Greece
Lighting Design: Idea Design Ltd
Architect: Ioanna Zavitsanou
Photo: Gavril Papadimitriou



ELECTRON SA, PROFESSIONAL LIGHTING SYSTEMS - 68 Antiochias Str, N.Philadelphia, 14341 Athens, Greece, info@electron.gr, www.electron.gr

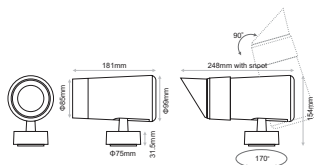


ELECTRON SA, PROFESSIONAL LIGHTING SYSTEMS - 68 Antiochias St, N.Philadephia, 14341 Athens, Greece, info@electron.gr, www.electron.gr

Conny series is a complete series of outdoor spotlights consisting of 6 different models in terms of consumption. The series is available with a variety of accessories: plastic spike, concrete base, tree belt, or pole base. It blends into minimal landscape due to the aesthetic of the spot itself and due to the low glare achieved by the use of honeycomb and/or snoot. It is available in black or white colour as standard but custom RAL colours are also available upon request. Marine treatment is also offered upon request ensuring higher resistance to weather, UV, water and mould growth.

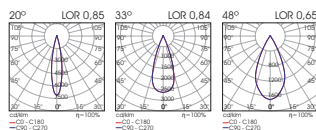
- Ingress Protection: IP66
- IK Rating: IK06
- Glare Rating: UGR <10.5 (20°), <12.9 (33°), <17.5 (48°)
- Phase Cut Dimmable or Non-Dimmable.
- Power cable: H05RN-F 3x0.75mm² L=2.0m
- Outer cable diameter: 7mm²
- Weight: 1,70kg

L80/B10 50.000h

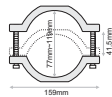
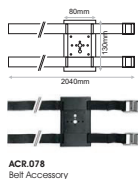


Model	CCT	CRI80 LED Source	Beam Angle	Colour	Voltage	Accessories
		80 (80)				
CONNY 20.7W (CONNY 20)	2700K (27C) 3000K (30C) 4000K (40C) 5000K (50C)	2340lm 2503lm 2691lm 2691lm	20° (NR) 33° (NR) 48° (WR)	Black (BL) White (WH)	230VAC Non-Dimmable (230ND) 230VAC Phase Cut Dimmable (230D)	<div> <div> <div>Standard</div> <div>SNOOT Black</div> <div>SNOOT White</div> </div> <div> <div>Standard</div> <div>Honeycomb</div> </div> <div> <div>extras</div> <div>No Extras</div> <div>Plastic Spike</div> <div>Pole Base</div> <div>Concrete Base</div> <div>Belt</div> </div> </div> <div> <div>{XXX}</div> <div>{0/0}</div> <div>{1/0}</div> <div>{2/0}</div> <div>{0/1}</div> <div>{1/1}</div> <div>{0/0}</div> <div>{0/1}</div> <div>{0/2}</div> <div>{0/3}</div> <div>{0/4}</div> </div>

Ordering Code Example: CONNY 20-30C-80-20-NR-230D-213



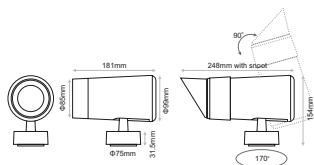
Accessories



Conny series is a complete series of outdoor spotlights consisting of 6 different models in terms of consumption. The series is available with a variety of accessories: plastic spike, concrete base, tree belt, or pole base. It blends into minimal landscape due to the aesthetic of the spot itself and due to the low glare achieved by the use of honeycomb and/or snoot. It is available in black or white colour as standard but custom RAL colours are also available upon request. Marine treatment is also offered upon request ensuring higher resistance to weather, UV, water and mould growth.

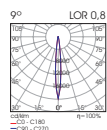
- Ingress Protection: IP66
- IK Rate: IK06
- Glare Rating: UGR <9.3 (9°)
- Phase Cut Dimmable or Non-Dimmable.
- Power cable: H05RN-F 3x0.75mm² L=2.0m
- Outer cable diameter: 7mm²
- Weight: 1,70kg

L80/B10 50.000h



Model	CCT	CRB80 LED Source	Beam Angle	Colour	Voltage	Accessories
			80 (80)			{X X X X}
CONNY 15.6W NARROW (CONNY 15N)	2700K (27C) 3000K (30C) 4000K (40C) 5000K (50C)	1340lm 1417lm 1496lm 1513lm	9° (VN)	Black (BL) White (WH)	230VAC Non-Dimmable (230ND) 230VAC Phase Cut Dimmable (230D)	Standard SNOOT Black (0-0) SNOOT White (1-0) Standard (0-0) Honeycomb (0-1) extras No Extras (0-0) Plastic Spike (0-1) Pole Base (0-2) Concrete Base (0-3) Belt (0-4)

Ordering Code Example: CONNY 15N-30C-80-VN-BL-230D-213



Accessories



Honeycomb



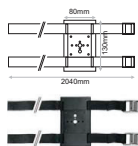
Snoot



ACR.008
Plastic Spike



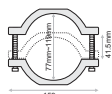
ACR.020
Concrete base



ACR.078
Belt Accessory



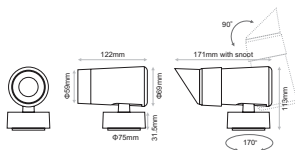
ACR.062
Pole Base



Conny series is a complete series of outdoor spotlights consisting of 6 different models in terms of consumption. The series is available with a variety of accessories: plastic spike, concrete base, tree belt, or pole base. It blends into minimal landscape due to the aesthetic of the spot itself and due to the low glare achieved by the use of honeycomb and/or snot. It is available in black or white colour as standard but custom RAL colours are also available upon request. Marine treatment is also offered upon request ensuring higher resistance to weather, UV, water and mould growth.

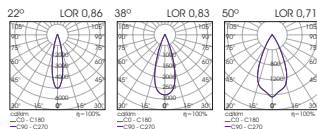
- Ingress Protection: IP66
- IK Rating: IK06
- Glare Rating: UGR <15.9 (22°), <15 (38°), <18.3 (50°)
- Phase Cut Dimmable or Non-Dimmable
- Power cable: H05RN-F 3x0.75mm² L=2.0m
- Outer cable diameter: 7mm²
- Weight: 0,80kg

L90/B10 50.000h

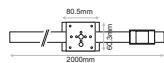


Model	CCT	CRI80 LED Source	Beam Angle	Colour	Voltage	Accessories
80 (80)						
CONNY 9.7W (CONNY 9)	2700K (27C)	1035lm	22° (NR)	Black (BL)	230VAC Non-Dimmable (230ND)	Standard (0/0)
	3000K (30C)	1114lm	38° (MD)	White (WH)	230VAC Phase Cut Dimmable (230D)	SNOOT Black (1/1)
	4000K (40C)	1114lm	50° (WD)			SNOOT White (2/1)
	5000K (50C)	1193lm				Standard (0/0)
						Honeycomb (1/1)
extras						
No Extras (0/0)						
Plastic Spike (0/1)						
Pole Base (0/2)						
Concrete Base (0/3)						
Belt S (0/4)						
Belt R (0/5)						

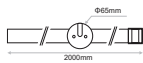
Ordering Code Example: CONNY 9-30C-80-38-NR-230D-215



Accessories



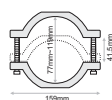
ACR.077
Belt S Accessory



ACR.010
Belt R Accessory



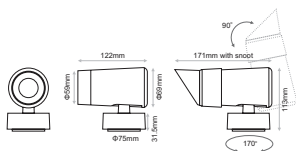
ACR.062
Pole Base



Conny series is a complete series of outdoor spotlights consisting of 6 different models in terms of consumption. The series is available with a variety of accessories: plastic spike, concrete base, tree belt, or pole base. It blends into minimal landscape due to the aesthetic of the spot itself and due to the low glare achieved by the use of honeycomb and/or snoot. It is available in black or white colour as standard but custom RAL colours are also available upon request. Marine treatment is also offered upon request ensuring higher resistance to weather, UV, water and mould growth.

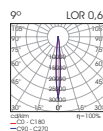
- Ingress Protection: IP66
- IK Rate: IK06
- Glare Rating: UGR <10.7 (9°)
- Phase Cut Dimmable or Non-Dimmable.
- Power cable: H05RN-F 3x0.75mm² L=2.0m
- Outer cable diameter: 7mm²
- Weight: 0,80kg

L90/B10 50.000h

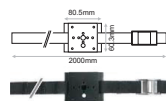


Model	CCT	CRIB0 LED Source	Beam Angle	Colour	Voltage	Accessories
		80 (80)				
CONN Y 9.2W NARROW (CONN Y 9N)	2700K (27C) 3000K (30C) 4000K (40C) 5000K (50C)	735lm 735lm 831lm 893lm	9° (VNV)	Black (BL) White (WH)	230VAC Non-Dimmable (230ND) 230VAC Phase Cut Dimmable (230D)	<div> <div>[XXX]</div> <div>(00)</div> <div>(10)</div> <div>(20)</div> <div>(10)</div> <div>(10)</div> <div>extras</div> <div>No Extras (00)</div> <div>Plastic Spike (01)</div> <div>Pole Base (02)</div> <div>Concrete Base (03)</div> <div>Belt S (04)</div> <div>Belt R (05)</div> </div>

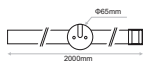
Ordering Code Example: CONN Y 9N-30C-80-VN-BL-230D-212



Accessories



ACR.077
Belt S Accessory



ACR.010
Belt R Accessory

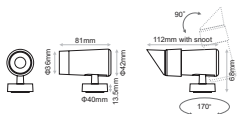


ACR.062
Pole Base

Conny series is a complete series of outdoor spotlights consisting of 6 different models in terms of consumption. The series is available with a variety of accessories: plastic spike, concrete base, tree belt, or pole base. It blends into minimal landscape due to the aesthetic of the spot itself and due to the low glare achieved by the use of honeycomb and/or snoot. It is available in black or white colour as standard but custom RAL colours are also available upon request. Marine treatment is also offered upon request ensuring higher resistance to weather, UV, water and mould growth.

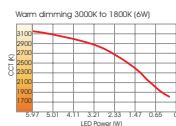
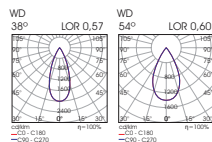
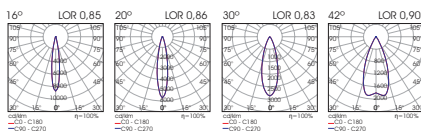
- Ingress Protection: IP66
- IK Rate: IK06
- Glare Rating CONNY 6: UGR <21.5 (16°), <18.8 (20°), <21.2 (30°), <21.6 (42°)
- Glare Rating CONNY 6 WD: UGR <17.6 (38°), <20.7 (54°)
- 24VDC Non-Dimmable
- Power cable: H05RN-F 2x0.5mm² L=2.0m
- Outer cable diameter: 5mm²
- Weight: 0,28kg

L90/B10 50.000h

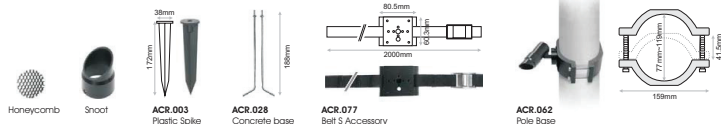


Model	CCT	CRI LED Source	Beam Angle	Colour	Voltage/Current	Accessories
CONNY 6W (CONNY 6)	2700K (27C)	550lm	16° (NR)	Black (BL)	Voltage 24VDC Non-Dimmable (24)	Standard SNOOT Black SNOOT White Standard Honeycomb extras No Extras Plastic Spike Pole Base Concrete Base Belt
	3000K (30C)	550lm	20° (MD)	White (WH)		
	4000K (40C)	642lm	30° (WD)		Current 350mA (350)	(0/0) (1/0) (2/0) (0/1) (1/1) (0/0) (0/1) (0/2) (0/3) (0/4)
	5000K (50C)	689lm	42° (VW)			
	Warm Dimmable 1800K-3000K	90 (90) 95 (95) 627lm 552lm	38° (WD) 54° (VW)			

Ordering Code Example: CONNY 6-30C-80-MD-BL-24-011



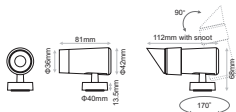
Accessories



Conny series is a complete series of outdoor spotlights consisting of 6 different models in terms of consumption. The series is available with a variety of accessories: plastic spike, concrete base, tree belt, or pole base. It blends into minimal landscape due to the aesthetic of the spot itself and due to the low glare achieved by the use of honeycomb and/or snoot. It is available in black or white colour as standard but custom RAL colours are also available upon request. Marine treatment is also offered upon request ensuring higher resistance to weather, UV, water and mould growth.

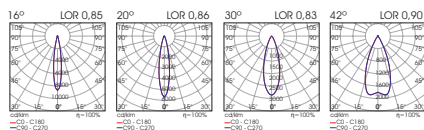
- Ingress Protection: IP66
- IK Rating: IK06
- Glare Rating: UGR <20.2 (16°), <17.5 (20°), <19.9 (30°), <20.3 (46°)
- 24VDC Non-Dimmable
- Power cable: H05RN-F 2x0.5mm² L=2.0m
- Outer cable diameter: 5mm²
- Weight: 0,28kg

L90/B10 50.000h



Model	CCT	CR80 LED Source	Beam Angle	Colour	Voltage	Accessories
CONNY 4W (CONN 4)	2700K (27C)	80 (80)	16° (NR)	Black (BL)	24VDC Non-Dimmable (24)	<div style="display: flex; align-items: center;"> <div style="margin-right: 10px;"> Standard SNOOT Black SNOOT White Standard Honeycomb extras No Extras Plastic Spike Pole Base Concrete Base Belt </div> <div style="font-size: 2em;">{ X X X }</div> </div>
	3000K (30C)	378lm	20° (MD)	White (WH)		
	4000K (40C)	378lm	30° (WD)			
	5000K (50C)	428lm 459lm	42° (VW)			

Ordering Code Example: CONNY 4-30C-80-MD-BL-24-011



Accessories





ELECTRON SA, PROFESSIONAL LIGHTING SYSTEMS - 68 Antiochias St, N.Philadelpchia, 14341 Athens, Greece, info@electron.gr, www.electron.gr



ELECTRON SA, PROFESSIONAL LIGHTING SYSTEMS - 68 Antichias St, N.Philadelphia, 14341 Athens, Greece, info@electron.gr, www.electron.gr

OLLY 46

- Oly projectors consist of two models in terms of consumption: 46 and 27 watt.
- The series offers a variety of accessories: diffuser, honeycomb and snoot to ensure visual comfort.
- Oly offers accessories in terms of installation: plastic spike, concrete base, belt accessory and pole base.
- It is available in black or white colour as standard but other RAL colours are also available upon request
- Outer cable diameter: 7mm
- Non dimmable
- L90/ 810 50.000h
- Ingress protection: IP66
- Weight: 2.4kg

L90/810 50.000h



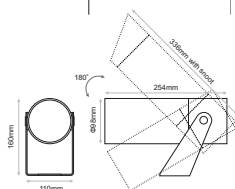
CREE 

IP65

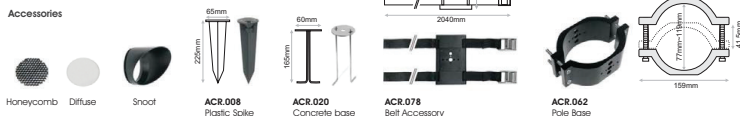
Model	CCT	CR80 LED Source	Beam Angle	Colour*	Voltage	Accessories
		80 (80)				
OLLY 46.3W (OLLY 46)	2700K (27C)	5520lm	15° (NR)	Black (BL)	230VAC Non-Dimmable (230ND)	<div> <div>Standard</div> <div>SNOOT</div> <div>Standard</div> <div>Honeycomb</div> <div>Diffuse</div> <div>extras</div> <div>No Extras</div> <div>Plastic Spike</div> <div>Pole Base</div> <div>Concrete Base</div> <div>Belt</div> </div> <div> <div>(0/0)</div> <div>(1/0)</div> <div>(1/1)</div> <div>(1/2)</div> <div>(1/3)</div> <div>(1/4)</div> <div>(1/0)</div> <div>(1/1)</div> <div>(1/2)</div> <div>(1/3)</div> <div>(1/4)</div> </div>
	3000K (30C)	5520lm	30° (MD)	White (WH)		
	4000K (40C)	5930lm	50° (MD)			
	5000K (50C)	5930lm				

* Available also in white colour upon request.

Ordering Code Example: OLLY 46-40C-80-MD-BL-230ND-104



Accessories



- Oly projectors consist of two models in terms of consumption: 46 and 27 watt.
- The series offers a variety of accessories: diffuser, honeycomb and snoot to ensure visual comfort.
- Oly offers accessories in terms of installation: plastic spike, concrete base, belt accessory and pole base.
- It is available in black or white colour as standard but other RAL colours are also available upon request
- Outer cable diameter: 7mm²
- Non dimmable
- L90/ B10 50000h
- Ingress protection: IP66
- Weight: 1.4kg

L90/B10 50.000h



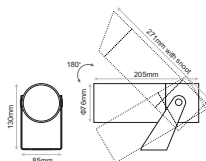
CREE
LEDs

IP65

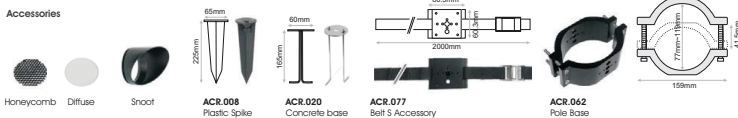
Model	CCT	CR180 LED Source	Beam Angle	Colour*	Voltage	Accessories
		80 (80)				{XXX}
OLLY 27.3W (OLLY 27)	2700K (27C) 3000K (30C) 4000K (40C) 5000K (50C)	3080lm 3310lm 3540lm 3540lm	15° (NR) 30° (MD) 50° (WD)	Black (BL) White (WH)	230VAC Non-Dimmable (230ND)	Standard SNOOT (000) Standard Diffuse (100) Standard Honeycomb Diffuse (200) extras No Extras (000) Plastic Spike (001) Pole Base (002) Concrete Base (003) Belt (004)

* Available also in white colour upon request.

Ordering Code Example: OLLY 27-40C-80-MD-BL-230ND-104



Accessories



GONZO 46

Gonzo is an outdoor projector series available either monochromatic or in RGBW.

- Housing: Die-cast aluminum with black or white powder coated.
- Mounting base: Powder coated die-cast aluminum.
- Glass: Tempered glass. T=3mm
- Cable gland: IP-68 PG-9 PA66
- Power cable: H05RN-F 2x1.0mm² L=0.3m
- IK Rate: 06
- Outdoor installation: IP66
- 24VDC PWM Dimmable
- Number of LEDs: 12
- Weight: 4.2kg



Model	CCT*	Luminaire Lumen	Beam Angle	Colour	Dimming Option
GONZO 46W (GONZO 46)	2700K (27N)	3130lm	9° (09)	Black (BL)	24VDC PWM Dimmable (24)
	3000K (30N)	3360lm	15° (15)	White (WH)	
	4000K (40N)	3600lm	20° (20)		
			30° (30)		
			45° (45)		

* Available also in 5700K & 6500K upon request.

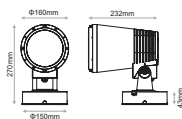
Ordering Code Example: GONZO 46-30N-30-BL-24

LIGHTSOURCE BY
NICHIA

IP66



Honeycomb



Gonzo is an outdoor projector series available either monochromatic or in RGBW.

- Housing: Die-cast aluminum with black or white powder coated.
- Mounting base: Powder coated die-cast aluminum.
- Glass: Tempered glass, T=3mm
- Cable gland: IP-68 PG-9 PA66
- Power cable: H05RN-F 2x1.0mm² L=0.3m
- IK Rate: 06
- Outdoor installation: IP66
- 24VDC PWM Dimmable
- Number of LEDs: 6
- Weight: 2.5kg



Model	CCT*	Luminaire Lumen	Beam Angle	Colour	Dimming Option
GONZO 25W (GONZO 25)	2700K (27H)	1490lm	9° (09)	Black (BL)	24VDC PWM Dimmable (24)
	3000K (30N)	1600lm	15° (15)	White (WH)	
	4000K (40N)	1710lm	20° (20)		
			30° (30)		
			45° (45)		

* Available also in 5700K & 6500K upon request.

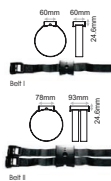
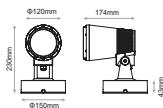
Ordering Code Example: GONZO 25-30N-30-BL-24

LIGHTSOURCE BY
NICHIA

IP66



Honeycomb



GONZO 70 RGBW

Gonzo is an outdoor projector series available either monochromatic or in RGBW.

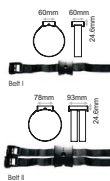
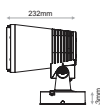
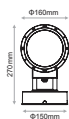
- Housing: Die-cast aluminum with black or white powder coated.
- Mounting base: Powder coated die-cast aluminum.
- Glass: Tempered glass. T=3mm
- Cable gland: IP-68 PG-9 PA66
- Power cable: H05RN-F 5x0.5mm² L=0.3m
- IK Rate: 06
- Outdoor installation: IP66
- 24VDC PWM Dimmable
- Number of LEDs: 12
- Weight: 4.2kg



IP66

Model	CCT	Luminaire Lumen	Beam Angle	Colour	Dimming Option
GONZO 70W (GONZO 70)	RGBW(6350K) (RGBW)	2054lm	20° (20) 30° (30)	Black (BL) White (WH)	24VDC PWM Dimmable (24)

Ordering Code Example: GONZO 70-RGBW-30-BL-24



Gonzo is an outdoor projector series available either monochromatic or in RGBW.

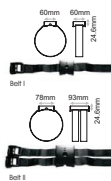
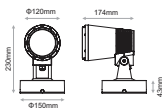
- Housing: Die-cast aluminum with black or white powder coated.
- Mounting base: Powder coated die-cast aluminum.
- Glass: Tempered glass, T=3mm
- Cable gland: IP-68 PG-9 PA66
- Power cable: H05RN-F 5x0.5mm² L=0.3m
- IK Rate: 06
- Outdoor installation: IP66
- 24VDC PWM Dimmable
- Number of LEDs: 6
- Weight: 2.5kg



IP66

Model	CCT	Luminaire Lumen	Beam Angle	Colour	Dimming Option
GONZO 36W (GONZO 36)	RGBW(5700K) (RGBW)	1240lm	20° (20) 30° (30)	Black (BL) White (WH)	24VDC PWM Dimmable (24)

Ordering Code Example: GONZO 36-RGBW-30-BL-24



TONDO LED spotlight ideal in applications that require a small scale luminaire.

- Housing material: passivated aluminum
- Glass : Tempered glass T=4mm
- Power cable: H05RN-F 2x0.75mm² L=1.5m
- Outdoor installation: IP66
- Luminaire available in Anodized or Black Anodized colour.
- Available accessories: Snoot, Plastic Spike, Belt accessory

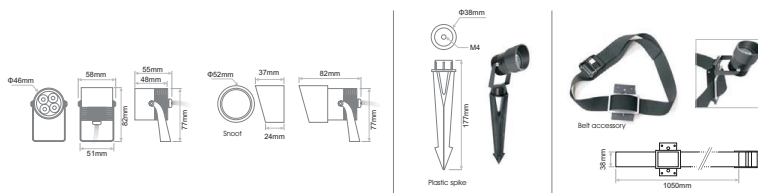


CREE
LEDs

IP66

Model	CCT	CRI80 Luminaire lumen	Beam Angle	Luminaire Colour	Voltage	Accessories
		>80 (80)				
TONDO 6W (TONDO 6)	2700K (27C) 3000K (30C) 4000K (40C) 5600K (56C)	300lm 320lm 350lm 370lm	15° (15) 20° (20) 40° (40)	Anodized (AN) Black Anodized (BA)	12VDC Dimmable (20-100%) (12)	COVER Standard (0/0) SNOOT Anodized (1/1) SNOOT Black Anodized (2/2) (XX) EXTRAS No Extras (0/N) Belt (1/B) Spike (1/S)

Ordering Code Example:
TONDO 6-40C-80-20-AN-12-0B



TONDO MINI is the smallest in scale LED spotlight.

- Housing material: passivated aluminum
- Glass : Tempered glass T=4mm
- Power cable: H05RN-F 0.75mm² L=1m
- Outdoor installation: IP66
- Luminaire available in Anodized or Black Anodized colour.
- Available accessories: Snoot, Plastic Spike, Belt accessory

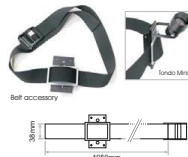
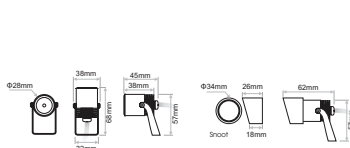


CREE LEDs

IP66

Model	CCT	CR180 Luminaire Lumen	Beam Angle	Luminaire Colour	Voltage	Accessories
		> 80 (80)				
TONDO MINI 2W (TONDO MINI 2)	2700K (27C) 3000K (30C) 4000K (40C) 5600K (56C)	150lm 160lm 170lm 180lm	17° (17) 25° (25) 45° (45)	Anodized (AN) Black Anodized (BA)	12VDC Dimmable (20-100%) (12)	COVER Standard SNOOT Anodized (0/1) SNOOT Black Anodized (2/1) (X/X) EXTRAS No Extras (/N) Belt (/B) Spike (/S)

Ordering Code Example:
TONDO MINI 2-40C-80-45-AN-12-0B



TONDO RETROFIT

TONDO Retrofit is a luminaire suitable for GU10 LED lamps (max 9W).

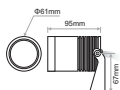
- Housing material: Passivated aluminum.
- Glass: Tempered glass T=3mm.
- Power cable: H05RN-F 3x1.0mm² L=1m.
- Cable gland: PG7.
- Gasket: O-ring PMQ silicone seal.
- Outdoor installation: IP66.
- Luminaire available in Black or Dark Grey colour.
- Available accessories: Snoot, Plastic Spike, Belt accessory.
- GU10 lamp holder, max 9W (lamp not included).



Code	Model	Colour	Lamp Holder	Dimensions	IP Rate
ALE.091	TONDO RETROFIT	Dark Grey	GU10 (max 9W)	Φ65x95mm	IP66
ALE.192	TONDO RETROFIT	Black	GU10 (max 9W)	Φ65x95mm	IP66

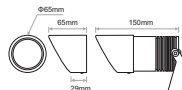


ACC.004
Honeycomb
(as extra)



ACC.011

Hood Dark Grey
(as extra)



ACC.013

Hood Black
(as extra)



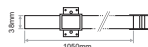
ACC.006

Spike Black
(as extra)



ACC.231

Belt Accessory
(as extra)



DENDO is a LED spotlight with manually adjustable beam angle from 55° to 15°.

- Housing material: passivated aluminum.
- Power cable:
HO5RN-F 2x1.0mm² open wires. L = 1 meter for 12VDC version.
- HO5RN-F 3x1.0mm² open wires. L = 1 meter for 230VAC version.
- Consumption: 12 Watt
- Outdoor installation: IP66
- Available accessories: Plastic spike, Belt accessory.



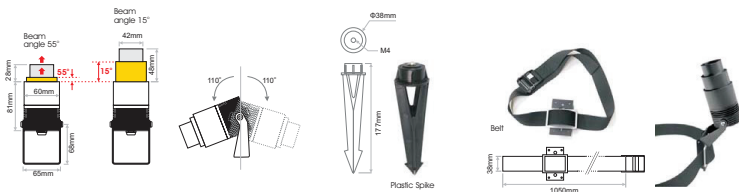
Selectable beam angle (From 15° to 55°)

CREE
LEDs

IP66

Model	CCT	Luminaire Lumen	CRI	Beam Angle	Luminaire Colour	Voltage	Accessories
DENDO 12W (DENDO 12)	2700K (27C)	max 55° / 390lm min 15° / 170lm	>80 (80)	Adjustable 15°(min)-55°(max)	Black (BL) White (WH)	12VDC Dimmable (20-100%) (12) 230VAC Non-Dimmable (230)	No Accessory (N) Spike (S) Belt (B)
	3000K (30C)	max 55° / 400lm min 15° / 180lm					
	4000K (40C)	max 55° / 410lm min 15° / 190lm					
	5000K (50C)	max 55° / 420lm min 15° / 200lm					
	5600K (56C)	max 55° / 420lm min 15° / 200lm					

Ordering Code Example:
DENDO 12-40C-80-AD-BL-230-S





ELECTRON SA, PROFESSIONAL LIGHTING SYSTEMS - 68 Antiochias St, N.Philadelphia, 14341 Athens, Greece, info@electron.gr, www.electron.gr

- High power RGBW LED projector 180W.

SPECIFICATIONS

- Lumen Output: 3500+
- Lux at 5m: 5000lm (8° optics).
- USITT DMX 512 on board with optional DMX personalities.
- Display control on board for 3/4/5/6/12 channels, STATIC COLOUR, AUTO and CUSTOM.
- IP rating 66.
- Electronic zoom 8°-40°.
- Dimmer 0-100%.
- Strobe 0-20Hz.
- Weight 9Kgs.



IP66

Model	Code	No.LEDs	Colour	Input Voltage	Power Consumption	Dimensions	Weight	Beam Angle	IP Rate
STORM WASH 61 ZOOM	PLE.037	61	17R+17G+17B+10W	100-240VAC 50-60Hz	180W	302x237x311mm	9Kgs	8°-40°	IP66

ACCESSORIES



ACC.225
IP67 Power Extension Cable (5m)



ACC.226
IP67 DMX Extension Cable (5m)



ACC.241
Filter Holder



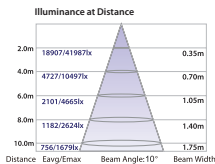
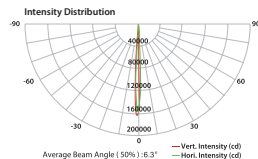
ACC.239
Barn Doors

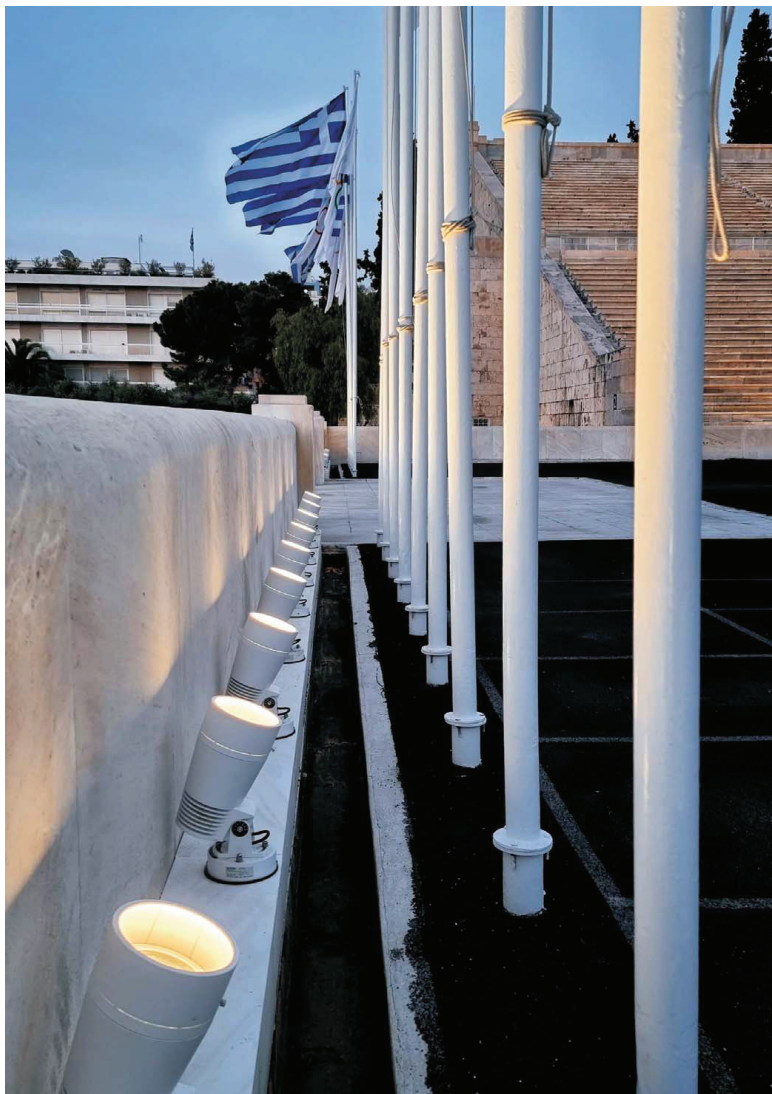


Top Hat



Holder for Top Hat





ELECTRON SA, PROFESSIONAL LIGHTING SYSTEMS - 68 Antiochias Str. N.Philadelpchia, 14341 Athens, Greece, info@electron.gr, www.electron.gr