

SCS
|
SCS
EDD
R
T
SCS
EDD
R

BRIGHT®
SPECIAL LIGHTING

as



as

ed

rt

ft

as

ed

rt

Aesthesis, the ancient Greek word for perception. **Aesthesis** is the threshold where perception begins. It is the moment when light touches matter, when **shadow** takes shape, when the invisible becomes **visible**. The foundation of how we experience light. **Light** reveals, shapes, and transforms. It is functional and emotional, industrial and poetic, all at once. **To craft light is to craft experience.**

Every fixture, whether born of industry or ornament, is a vessel for perception: it guides attention, awakens emotion, and transforms space. Decorative fixtures invite intimacy and atmosphere, while industrial solutions ensure clarity, performance, and reliability. Together, they compose a language of **light** that touches both the practical and the profound. This catalogue,

Aesthesis, is a reflection of that dialogue: the pursuit of objects that do more than illuminate. They heighten perception, enrich spaces, and awaken sensibility.

Aesthesis is our invitation to see lighting not as an object, but as an experience.

BR//GHT
SPECIAL LIGHTING

ABOUT US

#made in Athens

BRIGHT SPECIAL LIGHTING S.A. is a leading European manufacturing company in the lighting industry and was founded in 1984. Our headquarters, production unit, and five showrooms are located in Greece. Our wide range of architectural lighting systems mirrors our deep technical knowledge of lighting technology, our boundless creativity, and our devotion to manufacturing excellence. For 40 years, we have worked closely with architects and engineers to integrate unique lighting concepts into the final built form towards the highly demanding European standards.

- **Architectural Lighting for Indoor & Outdoor Areas**
- **Design, Production & Commerce of Lighting Systems**
 - **Smart Lighting Controls & Monitoring**
 - **Energy Saving**

- Engineering Department
 - Environmental Management System
 - Green Light
 - Innovative Design
 - Laboratory
 - Quality Control
 - Recycling
 - Research & Development
 - Tailor Made Lighting
-
- ISO 9001 Quality Management System
 - ISO 14001 Environmental Management System
 - ISO 45001 Occupational Health & Safety Management System
 - ISO 50001 Energy Management System
 - ISO 17025 Competence of Testing and Calibration Laboratories

CONSULTING

to our clients
for lighting management system
energy efficient lighting
lighting design
brand identity lighting
customised lighting systems

PARTNERS

Architects and Interior Designers
Installation Engineers
Electrical and Mechanical Engineers
Construction Companies
Lighting Designers
Distributors
Brand Communication Companies

BR//GHT
SPECIAL LIGHTING

AWARDS



10th Interior Awards 2025



The Chicago Athenaeum
Museum of Architecture and Design

SHOWROOMS



THE LIGHTING LEADING COMPANY

1984

Since

6720

Projects
Worldwide

42

Countries
Exporting

3100

Lighting
Products

35

Awards

160

Employees

5

Showrooms

1

Factory in
Greece

FACTORY

BRIGHT's state-of-the-art manufacturing facility, covering an area of 7,500 m², adheres to the highest quality and production standards for lighting fixtures and accessories. Supported by an advanced logistics and distribution system, our operations ensure precision, efficiency, and timely delivery across Europe and beyond.

We continuously invest in research and development, designing high-performance prototypes that reflect the rapid evolution of lighting technology. This forward-thinking approach enables us to enhance sustainability across every stage, from design and manufacturing to distribution.

BRIGHT is certified by the international IQNet organization and DQS GmbH (Germany) for the implementation of its Quality Management System (QMS). These certifications affirm our adherence to rigorous assessments and verification procedures that guarantee product quality and reliability throughout the production and delivery process.

QMS & ENVIRONMENTAL SUSTAINABILITY

At BRIGHT, our goal is to consistently deliver the highest quality lighting products, services, and solutions to our partners and clients. To achieve this, we implement an ISO 9001-certified Quality Management System, verified by DQS GmbH, which governs all stages of our design and manufacturing operations.

All BRIGHT products are designed in-house, drawing on decades of experience in lighting applications worldwide. Our in-house Lighting Laboratory, equipped with state-of-the-art instruments, plays a vital role in developing efficient, safe, and long-lasting products. Every design prioritizes efficacy, durability, user safety, and full compliance with European and international standards. Our products carry multiple quality certifications, including CE, ENEC, and CB, and undergo 100% Total Quality Control during production.

Driven by our dedication to environmental responsibility, BRIGHT also applies certified ISO 14001 Environmental Management and ISO 50001 Energy Management Systems. Through these frameworks, we pursue continuous improvements in recycling, energy efficiency, and carbon neutrality, reinforcing our commitment to a sustainable future.



Innovation, Competence, and Reliability

BRIGHT's in-house laboratory is innovative, competent, and reliable, equipped with instruments and apparatus, specific for luminaire and light testing, in full compliance with international standards as well as customer-requested specifications. The professionalism of our highest skilled personnel is guaranteed by the constant training and high level of preparation through experience in testing and metrology, alongside with the ISO 17025:2017 accreditation. Our laboratory is capable of performing tests from the following sectors:

- Photometry
- Photobiological Evaluation
- Safety
- Environmental, IK, and IP
- Performance and ErP.

Photometry

Light can transform areas. In our photometry laboratory, we validate the lighting parameters of our luminaires and how our products perform in real-life applications. BRIGHT LAB implements an accredited Quality Management System in compliance with ISO 17025:2017 from ESYD (Hellenic Accreditation System) for photometry testing, being the only accredited laboratory in Greece for photometry tests. We are capable of performing tests in compliance with EN 13032-1, EN 13032-2, EN 13032-4, and LM-79 standards.

Photobiological Evaluation

BRIGHT LAB can evaluate the hazards of light-emitting equipment. Specifically, we can evaluate the photobiological risk (UV risks actinic skin and eye, UV-eye, blue light small source, IR eye, skin thermal, blue light, retinal thermal, thermal retinal weak visual stimulus) that can emanate from light sources and light-emitting devices. The photobiological evaluation tests are performed in compliance with EN 62471 and IEC/TR 62778 standards.

Safety

All luminaire and household equipment must be safe-to-use. BRIGHT LAB performs safety testing on luminaires in compliance with EN 60598-1 and various EN 60598-2-xx standards. **Environmental, IK, and IP**BRIGHT LAB can perform tests on luminaires and other equipment regarding their environmental properties, impact resistance (IK degree), and ingress protection (IP degree) in compliance with EN 60529, EN 62262, and IEC/TR 62969 standards.

Performance & ErP

BRIGHT LAB conducts tests regarding the energy efficiency and performance of luminaires and light sources, as well as the newly implemented requirement by EPREL legislation for PSTLM (flicker) and SVM (stroboscopic) measurements.



TAILOR - MADE

The "Tailor-made light" service is provided by its engineers and designers at BRIGHT to create special constructions of lighting systems and luminaires. The main advantages of this service are the flexibility in design, the wide range of options from a variety of new materials, and the customized cost.

The team of architects and engineers of the BRIGHT PLUS department provides lighting solutions and proposals. Engineers are guided by the company's strategy to promote energy-saving and sustainable lighting design.

In addition, they implement personalized lighting systems for technically demanding projects. The consulting service begins in the early stages of design preparing and presenting concept ideas and concept analysis, based on the architectural direction and feedback from the client.

By using various presentation techniques, we prepare an analysis of the requirements of the project, methodology, visual renderings, and overall idea, accompanied by a pre-costing calculation. With over 50 years of experience in the lighting industry, the BRIGHT PLUS team of engineers provides technical advice on lighting systems offering perfect lighting performance with the latest technology.

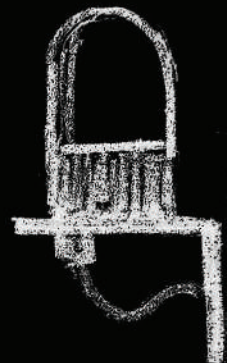
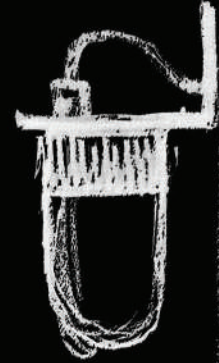
A Part of our production is handmade.



made in Athens



notio
(pnyon-ervoia)



Stachin
2026.

BRIGHT PLUS



PLUS ARCHITECTURAL LIGHTING

BRIGHT PLUS combines expert lighting consultancy with the latest advancements in lighting technology. Each project is studied individually to determine lighting solutions that best support its goals while maintaining our core commitment to environmental sustainability, energy efficiency, and performance.

We deliver detailed lighting proposals and photometric calculations that provide realistic visualizations of the intended lighting design. Our lighting engineers transform these visual concepts into analytical, data-driven simulations, producing accurate photometric mappings fully integrated with the architectural framework. This precise level of evaluation enables us to achieve exceptional results in both energy savings and aesthetic refinement.

PLUS TECHNOLOGY

Our Light Management System (LMS) integrates intelligent electronic network devices designed to control, automate, and monitor lighting installations within buildings. By applying advanced methods developed by our expert technicians, engineers, and architects, we optimize energy consumption and ensure efficient lighting performance.

The LMS incorporates a range of smart components, including motion and presence sensors, light sensors, and LED lighting systems. Together with precise control intent diagrams and lighting control specifications, these technologies form a comprehensive system that enhances sustainability, comfort, and operational efficiency in modern architectural spaces.

PLUS LIGHTING PLANNING

To enhance our clients' decision-making process, BRIGHT actively collaborates with leading industry partners. As an official DIALux partner, we provide access to an extensive international luminance database.

In cooperation with DIALux, BRIGHT has also developed its own specialized photometric database tool, offering users comprehensive access to detailed lighting data and plotting resources. This empowers clients to make informed decisions based on both energy efficiency and visual impact, supported by a thorough and reliable lighting guide.



Energy-Efficient Lighting Design
Saving energy solutions



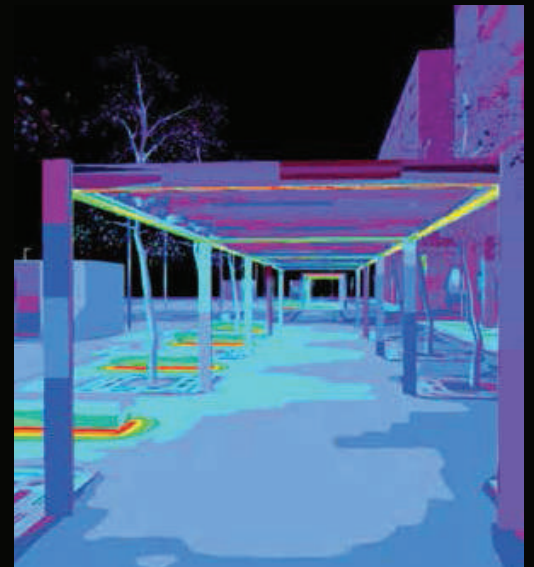
BRIGHT PHOTOMETRIC DATABASE

BRIGHT SPECIAL LIGHTING S.A. is an official DIALux partner, therefore we provide internationally our wide range of lighting photometric data through DIALux software. Each designer can have access to our database and integrate our products into lighting projects.



LIGHT STUDY

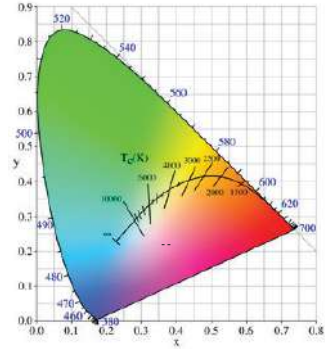
In order to be more precise on lighting results, BRIGHT's team uses software such as DIALux to provide photometric calculations of a lighting scene and assess whether the lighting fixtures are adequate for each project. Uniformity of a lighting plot is important for a successful lighting design and through DIALux, designers can measure the lighting distribution. Photometric data can then be evaluated according to saving energy options or even aesthetic results into space and form a complete and comprehensive lighting guide.



Understanding Light: Key Concepts and Modern Solutions

Color Rendering Index (CRI)

The Color Rendering Index measures how accurately a light source reveals the true colors of objects compared to natural daylight. High-CRI lighting brings colors to life, making spaces feel vibrant and natural, while low CRI lighting can make colors appear washed out or slightly off. With a maximum CRI of 100, lighting that approaches this value closely mimics daylight for the most authentic visual experience.



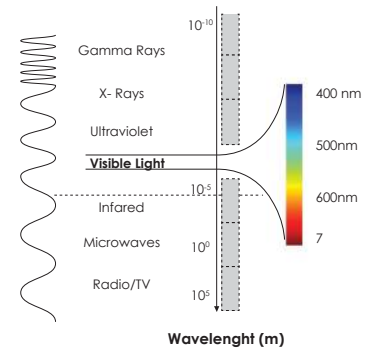
CIE Chromaticity Diagram

Luminous Flux (Lumen, lm)

Luminous flux represents the total light output of a source. Measured in lumens, it reflects the perceived brightness to the human eye. Unlike radiant flux, which includes all electromagnetic radiation, luminous flux is specifically adjusted to what we can see, helping you choose lighting that feels bright and welcoming without being overwhelming.

Luminous Intensity (Candela, cd)

Luminous intensity describes the amount of light emitted in a specific direction. The design of a lamp or luminaire, including reflectors, shapes the intensity distribution. This ensures that light reaches the areas where it's needed most, enhancing both functionality and aesthetic appeal.



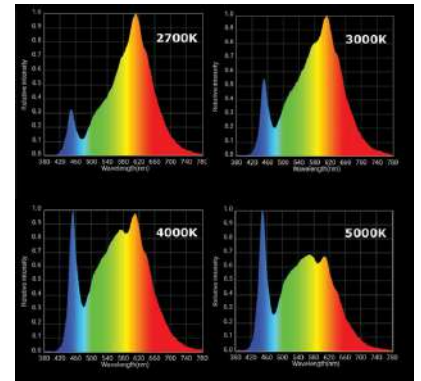
Luminance (cd/m²)

Luminance measures the light reflected from surfaces in a particular direction, correlating directly with how bright the human eye perceives a surface. This metric helps in creating visually comfortable spaces and reducing glare, ensuring both beauty and usability in your lighting design.

Luminaire Efficiency

Luminaire efficiency, expressed as lumens per watt, indicates how effectively a fixture converts electrical energy into visible light. Higher efficiency means better performance with lower energy consumption — a key consideration for sustainable and cost-effective lighting solutions.

Spectral Power Distribution



Illuminance (Lux)

Illuminance measures how much light falls on a surface, expressed in lux (lumens per square meter). For example, well-lit workplaces typically require around 500 lux. Properly designed illuminance ensures spaces are bright enough for comfort and productivity while avoiding unnecessary energy use.

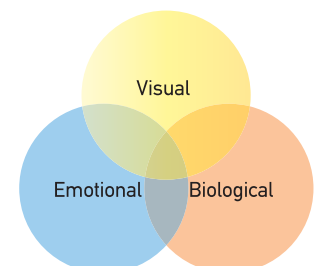
Luminous Color and Color Temperature

Color temperature defines the visual tone of a light source. Warm colors (2700–3000 K) create a cozy, inviting atmosphere, while cooler colors (5000 K and above) feel crisp and energizing. Choosing the right color temperature allows you to set the mood and functionality of any space.

Average Rated Life (ARL)

Average rated life indicates the number of hours a bulb operates before half of a batch is expected to fail, labeled as L50 (e.g., 20,000 L50). Longer lifetimes reduce maintenance costs and increase the reliability of your lighting installations.

Triple Effect of Light



LED Technology and Lighting Management

Advanced LED Quality

LED technology offers energy-efficient, long-lasting lighting with exceptional performance. Key quality indicators include color consistency, measured by the MacAdam Ellipse (SDCM). High-quality LEDs ensure uniform light without noticeable color variation, supporting both aesthetic and functional excellence.

Smart Lighting and Management

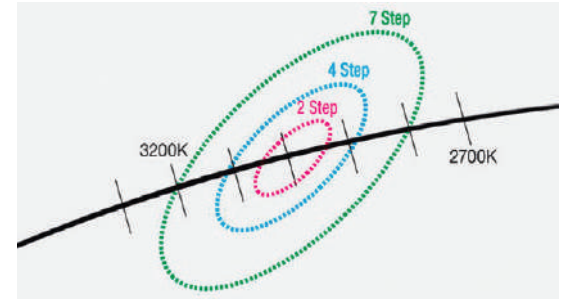
Modern lighting goes beyond illumination. Intelligent systems, such as DALI (Digital Addressable Lighting Interface), allow dynamic control, dimming, and automation. These systems optimize energy use, adapt lighting to different activities, and enable seamless integration with building automation. Whether it's spotlights, downlights, or linear LEDs, smart lighting ensures flexibility, efficiency, and easy future upgrades.

Benefits of LED Technology

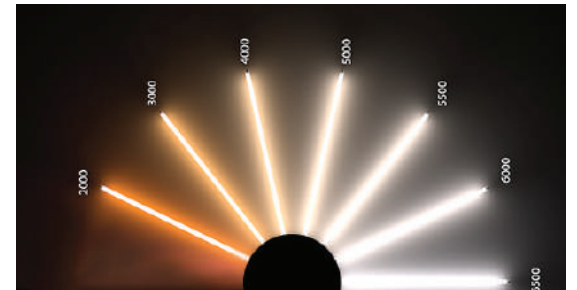
LEDs deliver high luminous flux, excellent CRI, and a wide range of color temperatures (from warm 2700 K to cool 6500 K). Linear LED modules, tape LEDs, and integrated luminaires offer compact designs, simplified installation, and exceptional energy efficiency. From offices and retail spaces to museums and industrial sites, LEDs provide reliable, customizable lighting solutions for any environment.

Future-Ready and Sustainable

LED lighting is designed for longevity, efficiency, and adaptability. Standards such as Zhaga compatibility ensure that components can be integrated seamlessly into future lighting systems. With superior performance and human-centric design, modern lighting solutions enhance comfort, productivity, and sustainability — lighting spaces the way they were meant to be experienced.



The MacAdam Ellipse



OFFICE LIGHTING

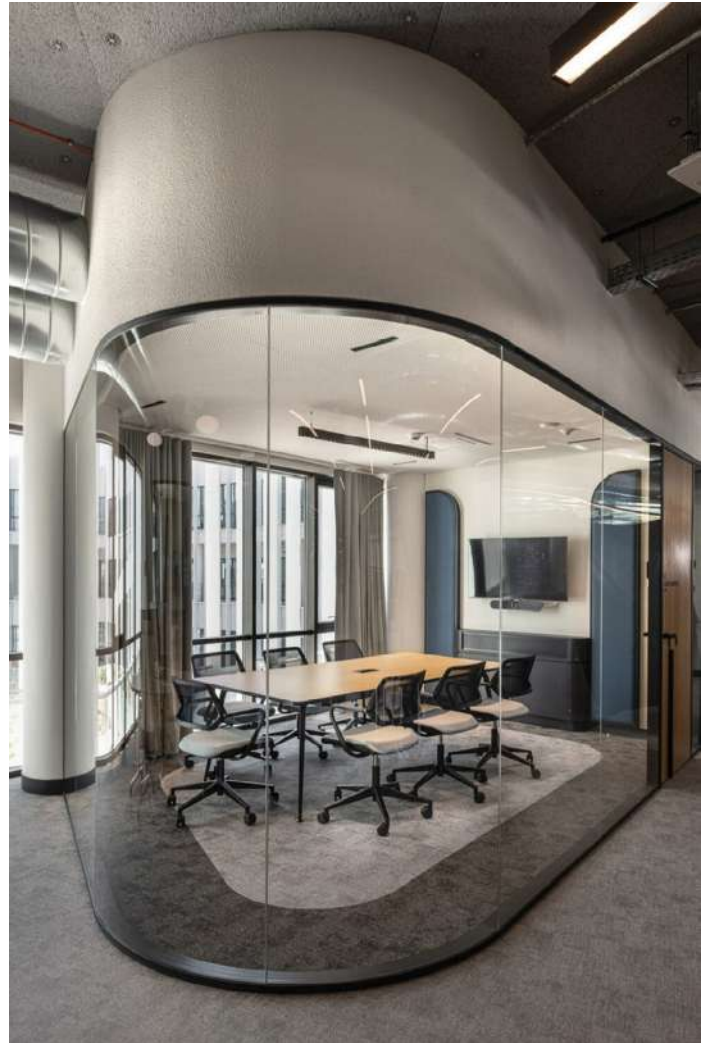


Office lighting is a defining element in shaping how people experience and perform within their workplace. Beyond simple illumination, it influences focus, creativity, and overall well-being, while also expressing the values and identity of a company. Thoughtful lighting design creates environments that feel balanced, comfortable, and inspiring—spaces that support productivity and collaboration throughout the day.

At BRIGHT, we create lighting solutions that bring together refined aesthetics and advanced performance. Our linear LED luminaires are designed to provide uniform, glare-free illumination with exceptional visual comfort. Through precise optical engineering and intelligent control systems, brightness and color temperature can adapt dynamically to changing daylight or individual needs, ensuring the ideal atmosphere for every task and moment.

We believe that light should not only serve function but also elevate experience. That's why every BRIGHT product embodies minimal design, durability, and energy efficiency—qualities that contribute to both sustainability and architectural harmony. Whether in open-plan offices, meeting rooms, or executive areas, our lighting enhances the workspace while reinforcing the company's professional image and design vision.

BRIGHT office lighting stands for comfort, innovation, and timeless quality—transforming everyday work environments into places where people feel connected, inspired, and empowered to achieve more.





SEDO 2 NOTUS 14 UP-DOWN



FUGA 2 RING SEDO SP UP DOWN



ONUS

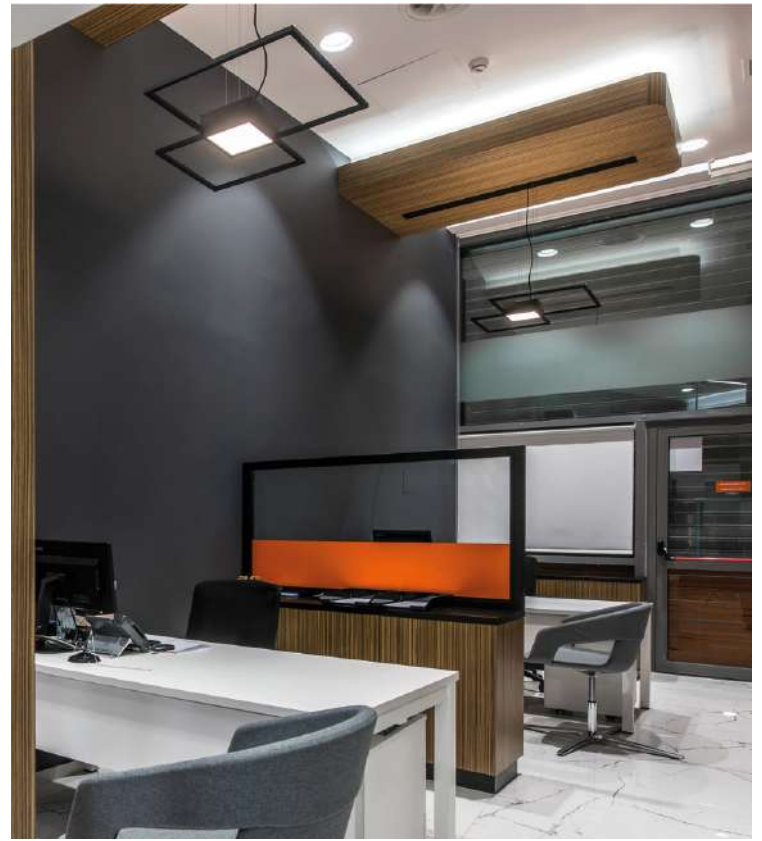


NOTUS 16 SQUARE



BACA SQ 75





FUGA 2 RING SP SPOT



COMIS 12



COMIS 20 FLEX



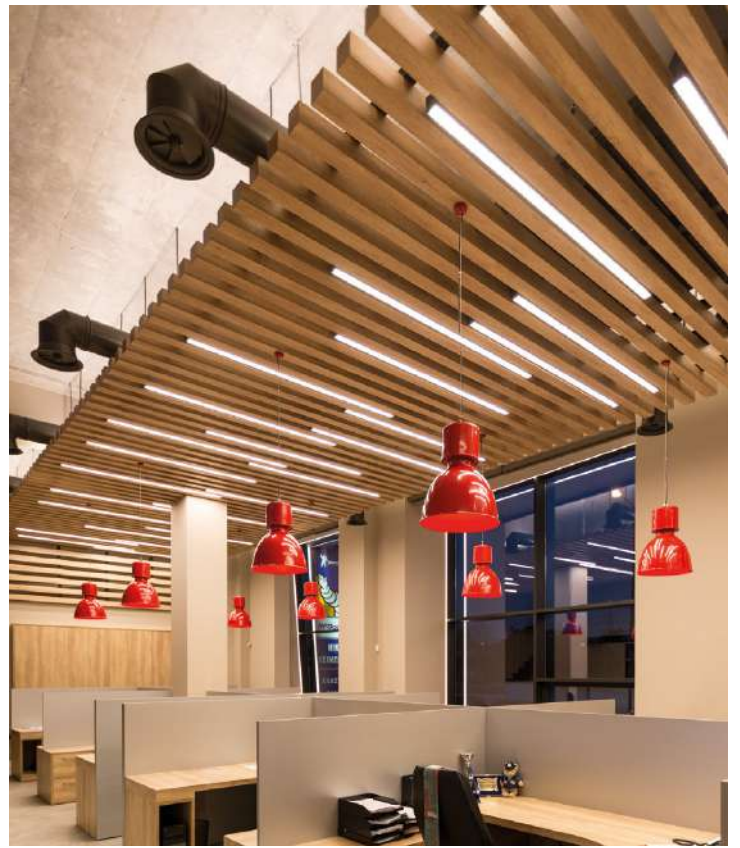
COMIS 12 RING



NOTUS 25 DAISY SP

BR//GHT
SPECIAL LIGHTING





LEGATUS LINEAR SPOT



SPOT BENE ROUND XL BLACK



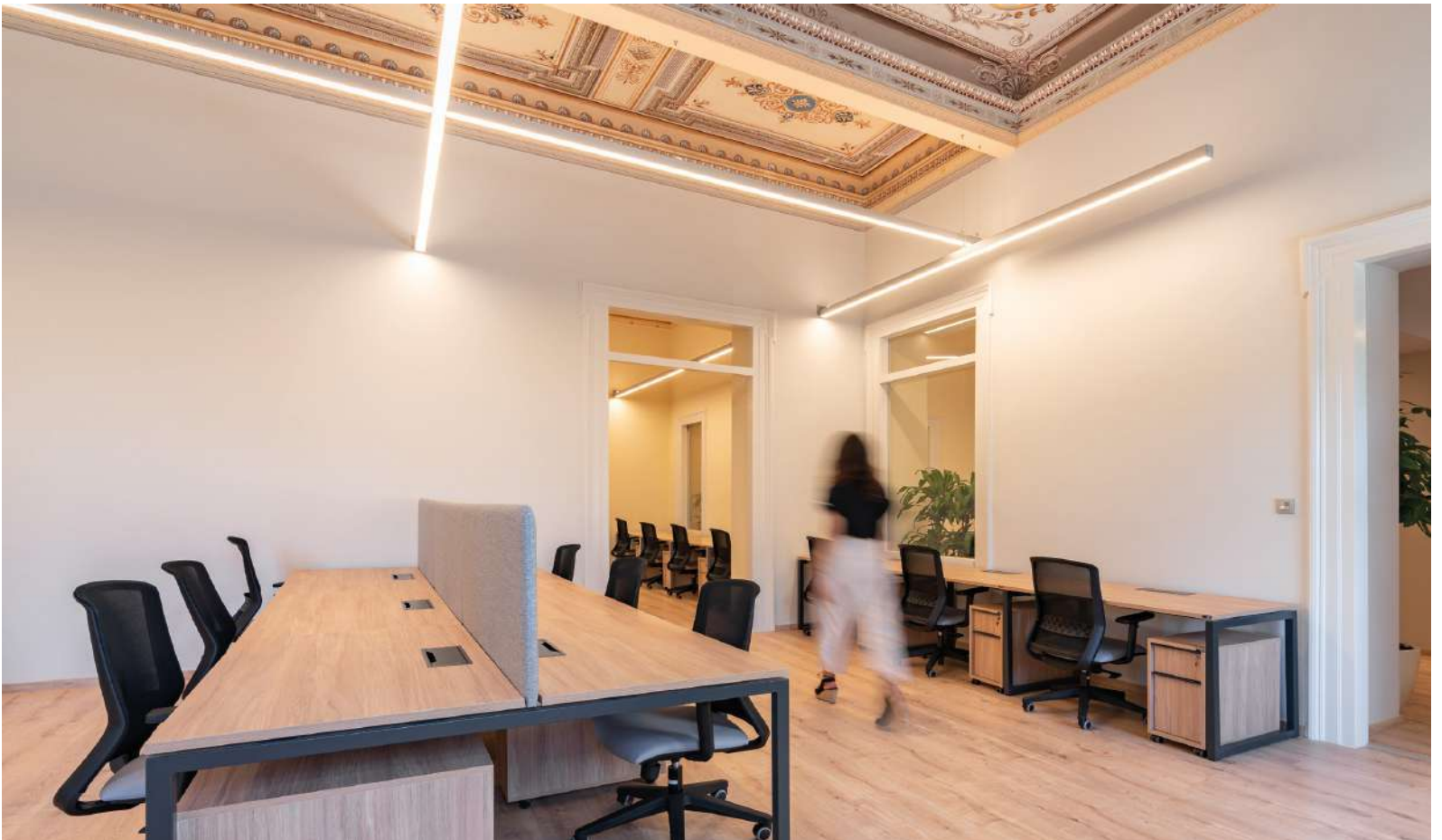
BENE 5F TRIMLESS

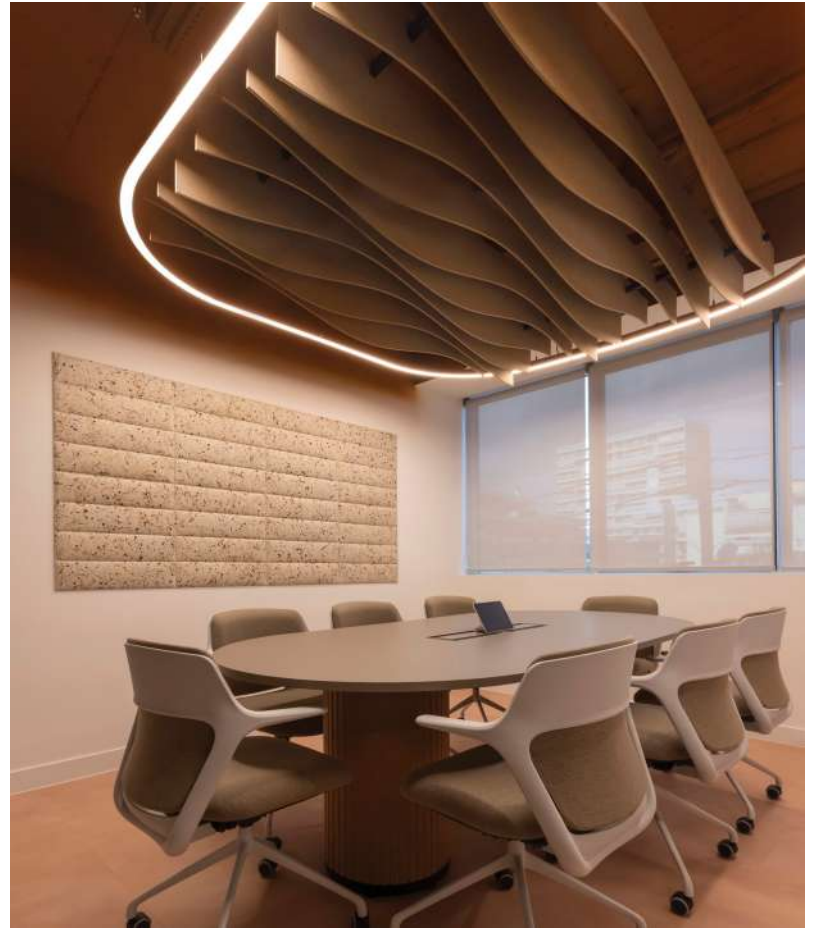


BENE 2F TRIMLESS



BENE 5F L





FIRMUS B 50 DZ



COMIS RING



RAVUS CEILING 1



NOTUS 16 STATUS LINEAR LED



SEDO 5 CURA SP





SECTA TR 5 SP



SEDO STATUR SMALL



SEDO SQUARE SP

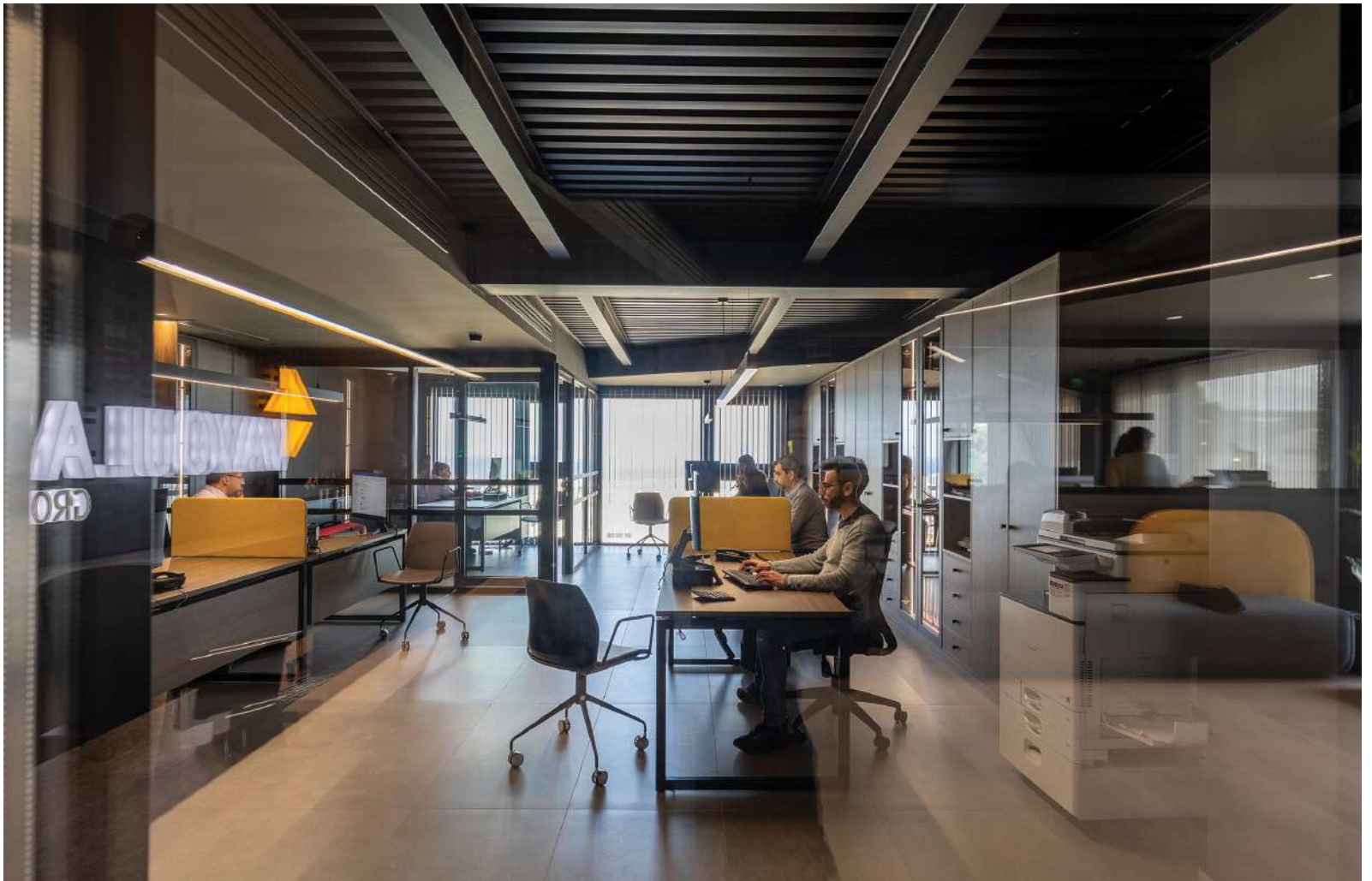


SEDO FUGA 2 RING SP UP DOWN



SEDO LATER

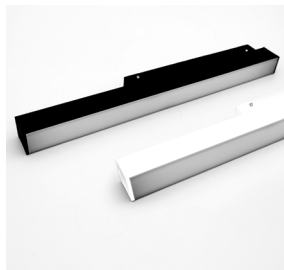




NOTUS 16 UGR LINEAR LED



COMIS 40 FLEX SP



LEGATUS LINEAR LED



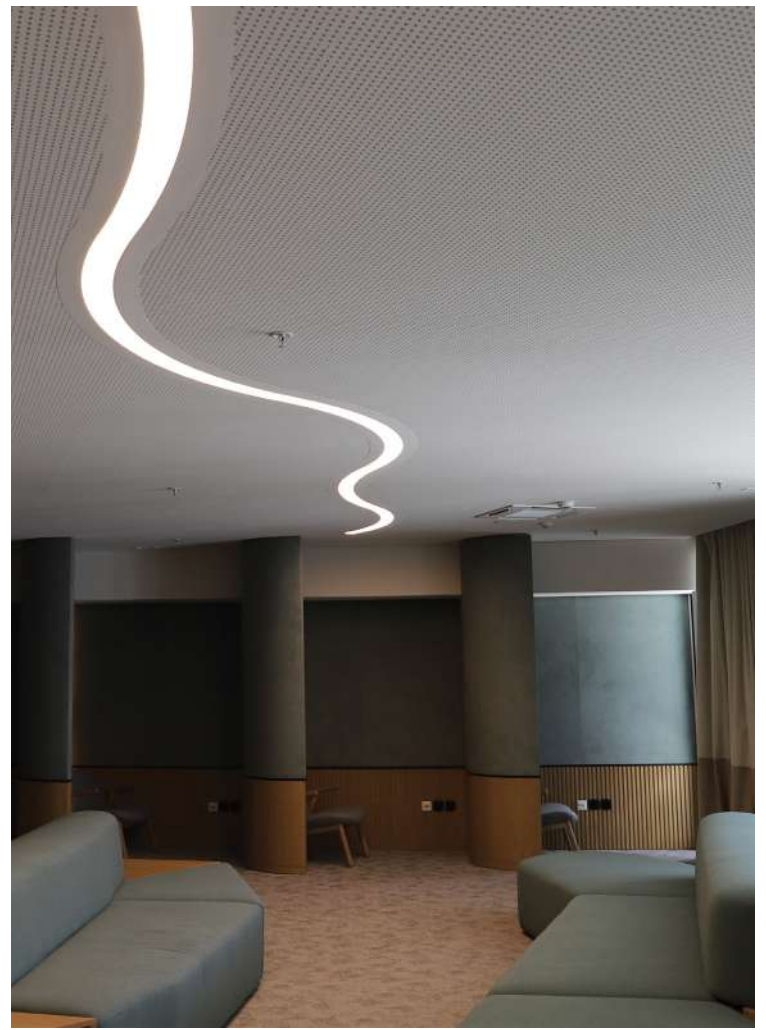
COMIS 35 UP DOWN



POSCO 12



BR//GHT
SPECIAL LIGHTING



FUGA 2 CURVE SP



PANEL DAISY SQUARE



VIVO 15



VIVO 2



SEDO BENE 40



RETAIL LIGHTING



In the retail industry, lighting design has evolved into a strategic tool that not only highlights product qualities but also shapes immersive shopping experiences and reinforces brand identity.

Today, forward-thinking lighting concepts combine sustainable technologies, adaptive controls, and human-centric design to create dynamic environments. Retailers and lighting designers are challenged to deliver systems that enhance customer engagement, support well-being, and meet increasingly strict energy efficiency standards.

In 2025, innovations such as advanced LED sources with superior Color Rendering Index (CRI), tunable white and RGBW spectrums, smart optics, and AI-driven lighting management are setting new benchmarks. The integration of IoT-enabled and DALI-2 lighting control systems allows retailers to personalize atmospheres in real time, while simultaneously collecting actionable data on customer behavior—such as dwell time, movement flows, and interaction zones—to optimize product placement and in-store navigation.

BRIGHT, through its tailor-made solutions, delivers lighting that blends aesthetics, performance, and sustainability. Flexible designs, recyclable materials, and seamless integration with digital lighting management systems ensure energy savings, reduced operational costs, and alignment with ESG goals.

Lighting today acts as both a functional asset and a communication medium: it attracts consumers at first sight with impactful window displays, guides them effortlessly through the store, and creates memorable brand moments that extend far beyond the shopping trip. In essence, lighting has become a cornerstone of retail storytelling and customer connection in the new retail era.





POTIS L S.S.LED



LEGATUS SPOT 20/FUSUS/SPOT 50

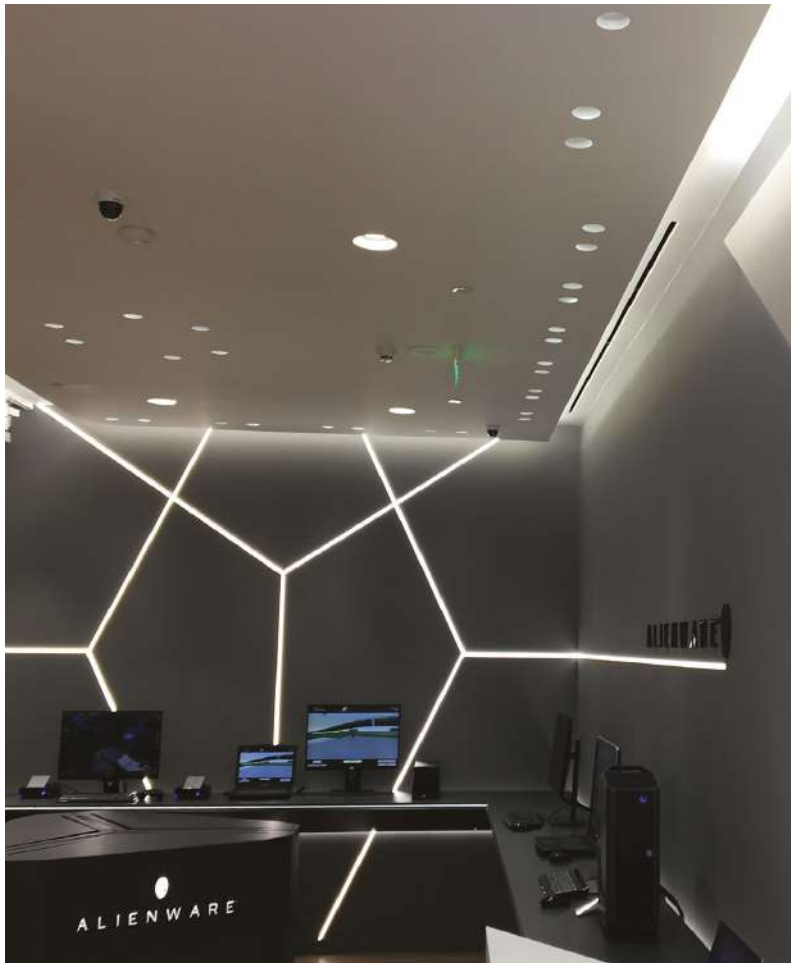


VATES 10



VATES 12





BR//GHT
SPECIAL LIGHTING



CERNO 9



PENDO 15 ADTR



VATES 17



VATES 23



LEGATUS SPOT 35 IN





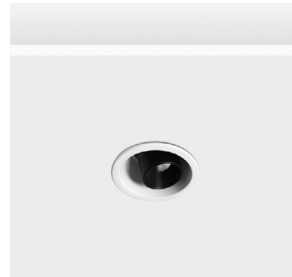
VATES 13



PENDO M 8R S.S.LED



LENTE 3

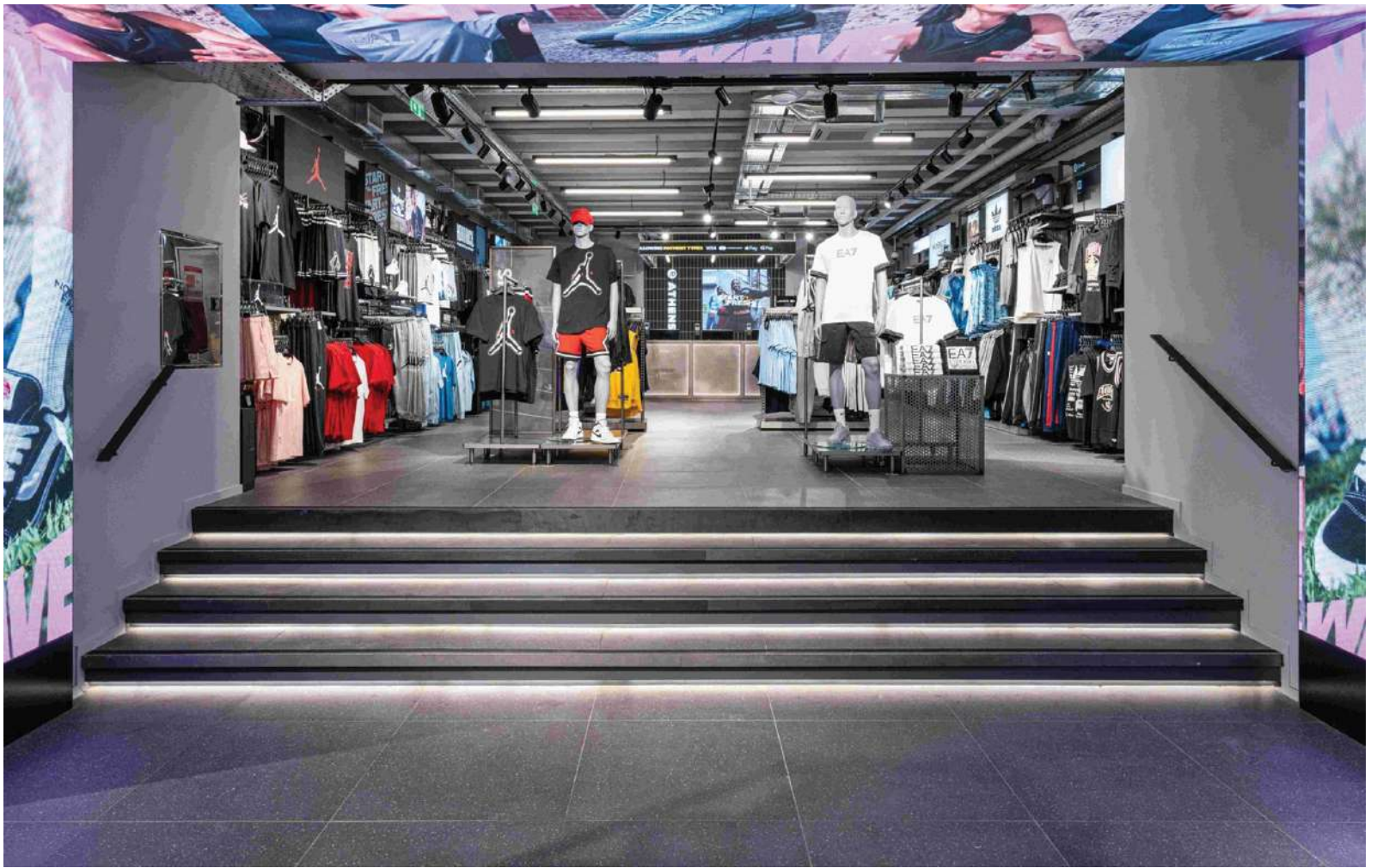


STELLA 6 FUSUS



STELLA 14





PENDO 1R TR S.S.LED



BENE 5F Q SPOT



LEGATUS 2 LINEAR SPOTS MOB 6F



STELLA 15 MOB



GIGA 5 GYM





FUGA 2 ROUND



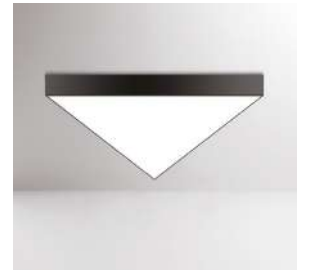
FUGA 2 R TRIANGLE



FUGA 2 SQUARE

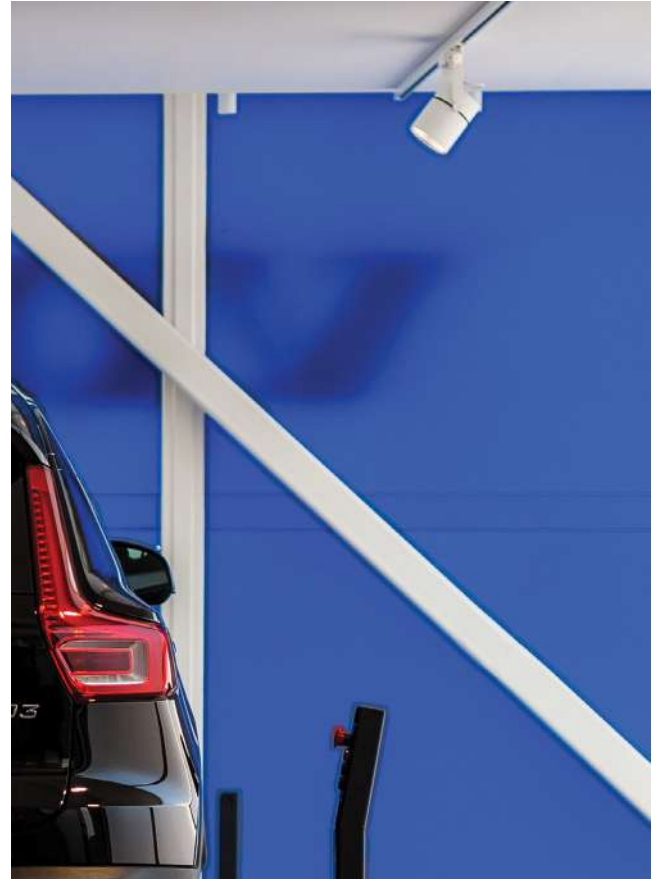


FUGA 2 RING



FUGA 2 TRIANGLE





POTIS N S.S.LED



NOVITAS 1



NOTUS 1 LINEAR LED SYSTEM



NOTUS 16 LINEAR LED SYSTEM



NOTUS 18 SYSTEM SP





FORIS M S.S.LED



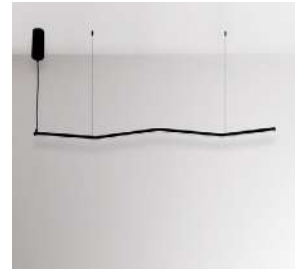
NOTUS 19 SPOT LINEAR LED SYSTEM



NOTUS 19 TRACK LINEAR LED SP



NOTUS 12 LINEAR LED SP



VIVO 5



SHOPPING MALLS LIGHTING



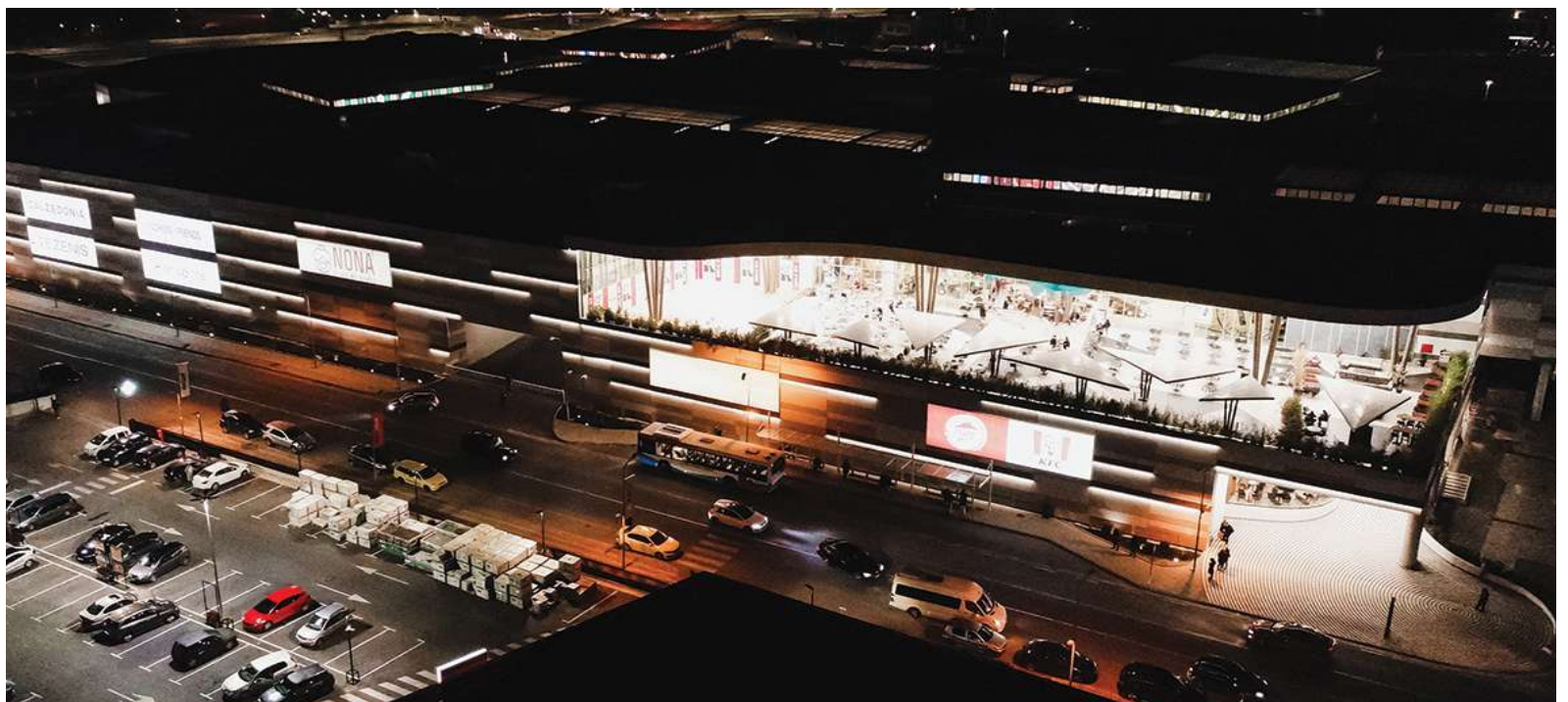
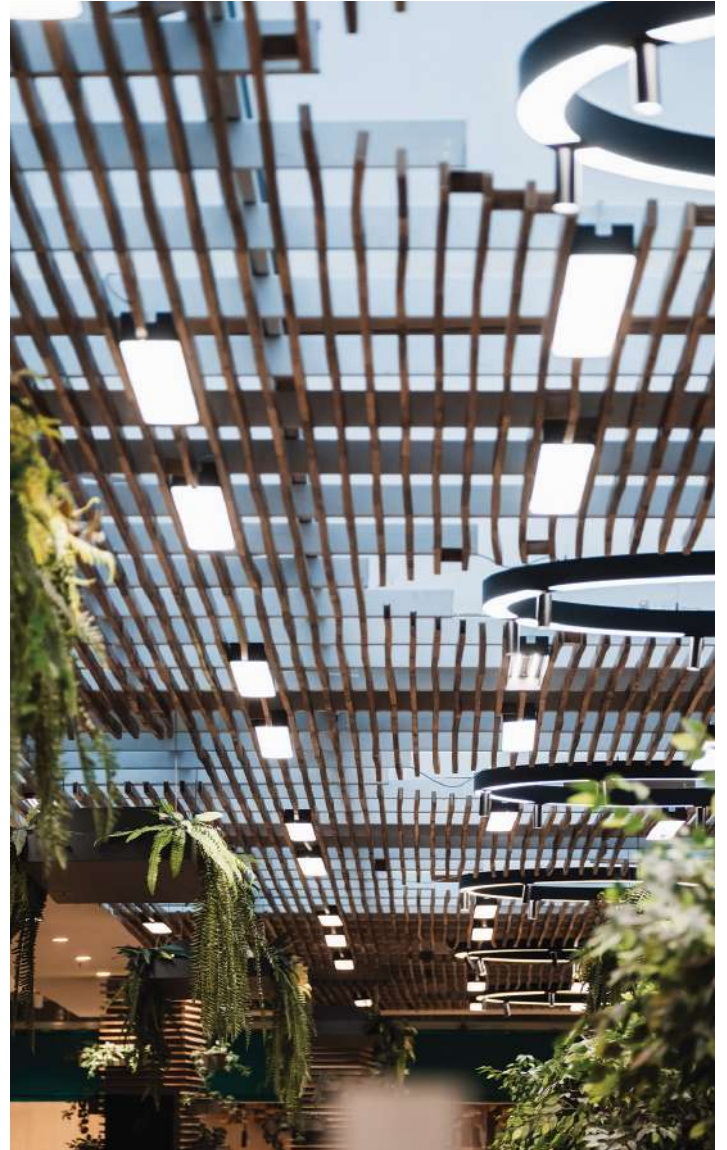
Lighting design for shopping malls and retail environments plays a vital role in shaping customer perception and enhancing the overall shopping experience. Beyond simply providing illumination, well-designed lighting defines spaces, influences mood, and directs the flow of visitors through the retail journey. The right balance between functionality, aesthetics, and energy performance ensures that every product and architectural detail is presented at its best.

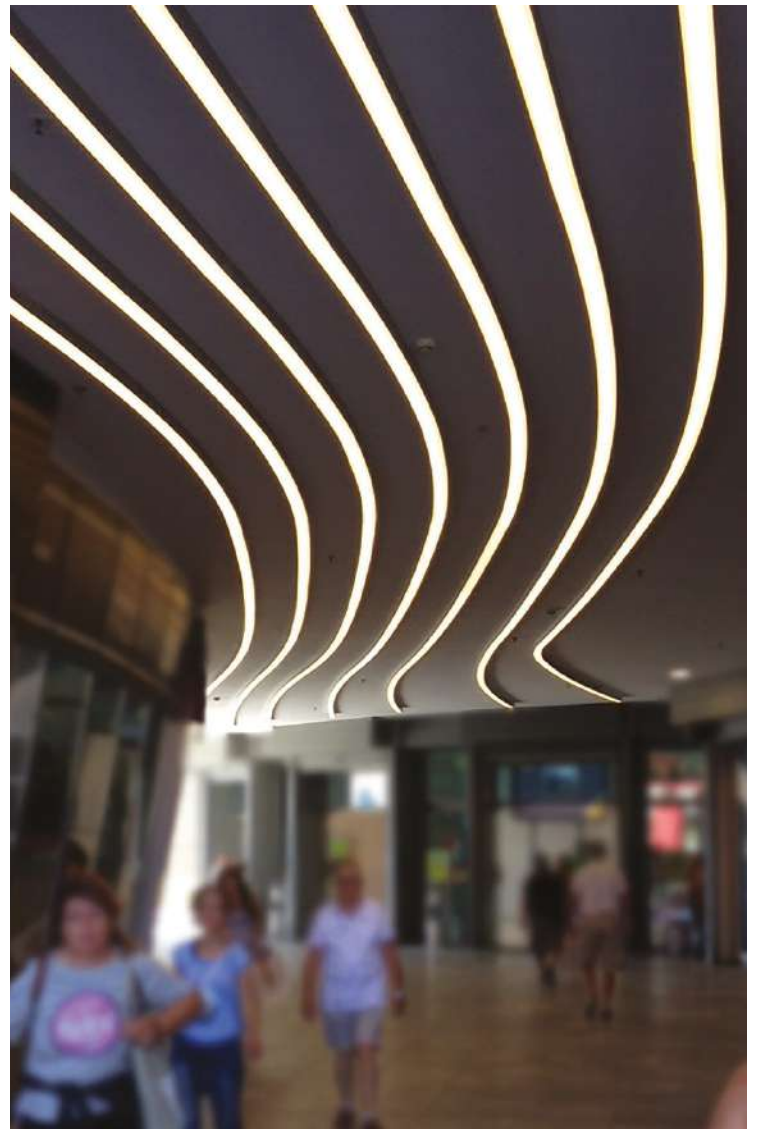
At BRIGHT, we specialize in developing advanced linear LED lighting systems that combine minimal design with cutting-edge optical performance. Our luminaires are engineered to deliver precision and flexibility, ensuring consistent and efficient illumination across all retail zones—from entrance areas and walkways to display windows and vertical product surfaces.

Using high-quality optical LED boards, available in asymmetric, batwing, double asymmetric, and high-intensity distributions, our lighting solutions provide targeted and glare-free illumination. This approach highlights textures, enhances color rendering, and brings out the full visual impact of merchandise and brand presentation.

In addition, BRIGHT integrates intelligent control technologies, such as daylight and motion sensors, to optimize energy consumption and adapt lighting levels to real-time needs. Emergency lighting options with built-in battery systems further enhance safety and reliability, converting fixtures into EMG mode operation when required.

With a strong focus on efficiency, longevity, and architectural harmony, BRIGHT creates lighting systems that not only meet the functional demands of modern retail but also contribute to creating welcoming, visually stimulating, and memorable spaces where people enjoy spending time.





POTIS K S.S.LED



NOTUS 14 UP DOWN LINEAR LED SP



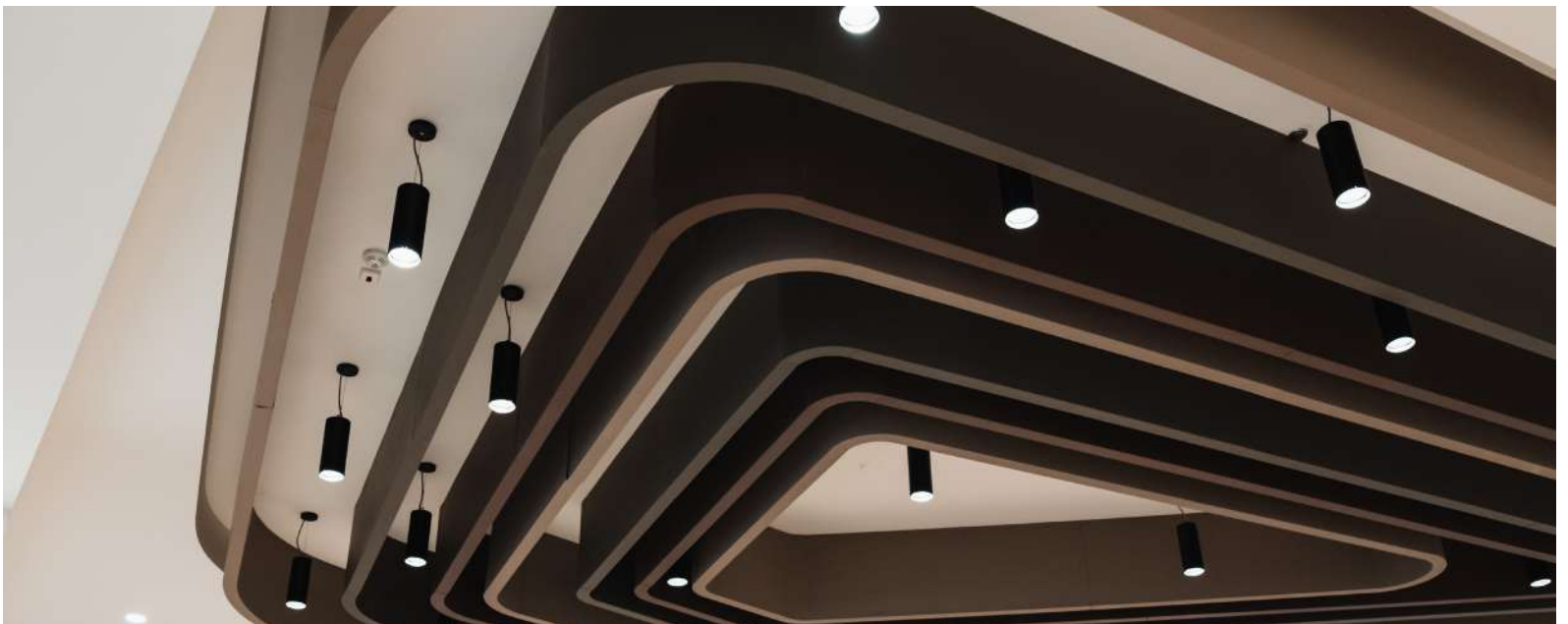
NOTUS 25 LINEAR LED SP



NOTUS 16 LINEAR LENS LED SP

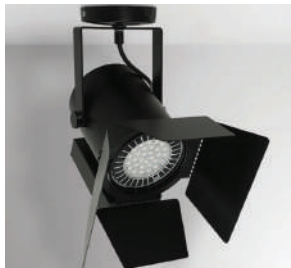


POTIS M S.S.LED





BR//GHT
SPECIAL LIGHTING



FOCUS 20 SMALL



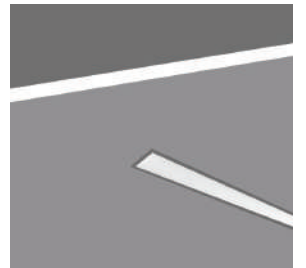
NOTUS 1 CROSS LINEAR LED



COMIS 10 RING

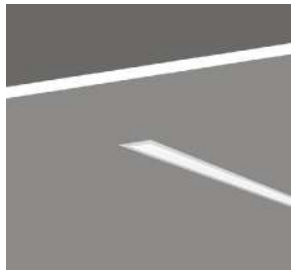
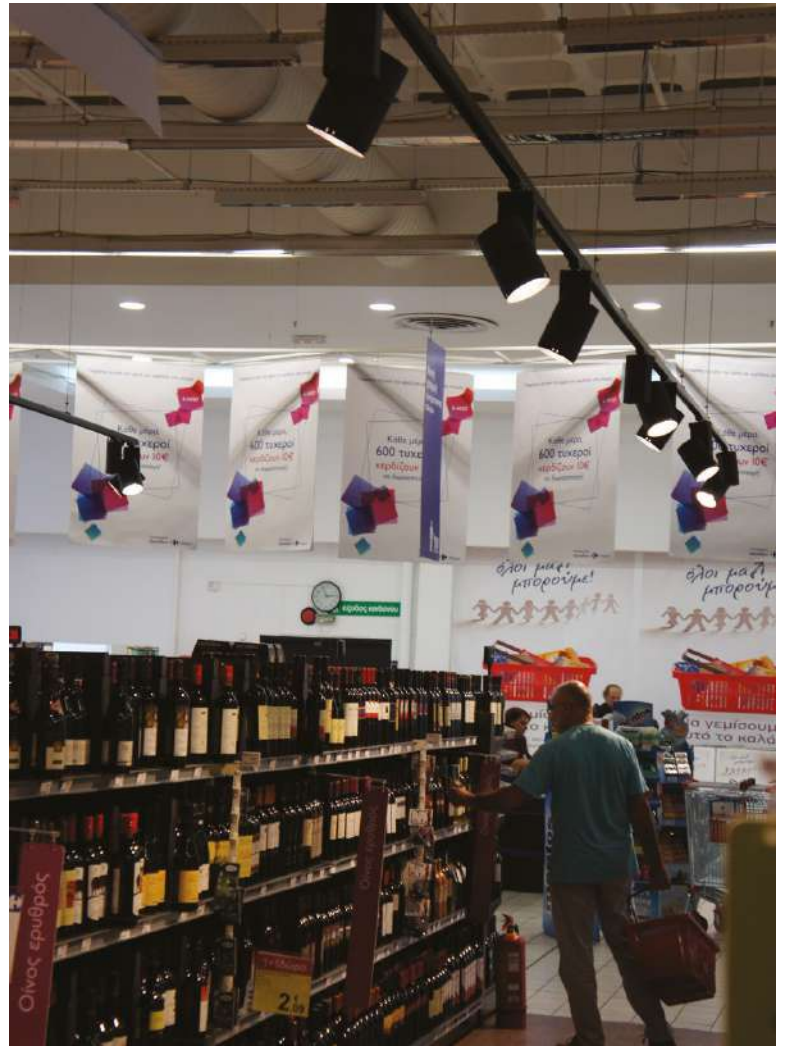


COMIS 10 8 FLEX

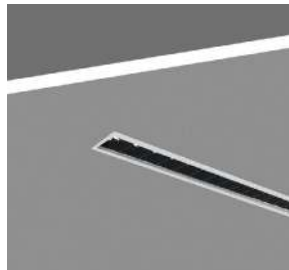


COMIS 10 IN





NOTUS 16 LINEAR LED IN



NOTUS 25 DAISY IN



COMIS OUT SMALL



COMIS CORNER



NOVUS OUT CHANNEL H.P. LED

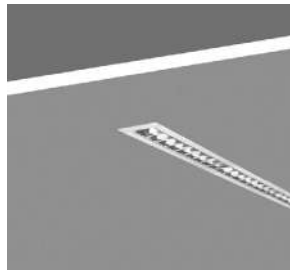




BR//GHT
SPECIAL LIGHTING



BACKLIGHT PANEL IN 2 PRISMATIC UGR



NOTUS 8 CROSS



VATES 21



RAVUS CEILING 2



FLUXUS L-T LED





PLANUS 18



FUGA 2 HEXAGON



RAVUS CEILING 3



NOTUS 1 PL LINEAR LED



LOW VOLTAGE SYSTEMS



HOSPITALITY LIGHTING



Hospitality lighting plays a fundamental role in defining the atmosphere, comfort, and character of a space. From hotels and resorts to restaurants and wellness centers, the right lighting design shapes the guest experience by creating a sense of warmth, sophistication, and relaxation. It welcomes visitors, enhances architectural beauty, and transforms ordinary moments into memorable experiences.

At BRIGHT, we believe that hospitality lighting is an art form—one that blends design, technology, and emotion. Our luminaires are designed to highlight the unique personality of each space while supporting functionality and efficiency. Through advanced optical systems, refined finishes, and carefully balanced color temperatures, our lighting solutions elevate interiors and exteriors alike, bringing out textures, materials, and architectural features with precision and elegance.

Every space within a hospitality environment has its own lighting needs—from the calming tones of guest rooms and spa areas to the dynamic atmosphere of restaurants, lobbies, and outdoor terraces. BRIGHT's versatile LED systems allow full control over intensity and ambiance, enabling designers and operators to tailor light to every moment, enhancing both comfort and mood.

In addition to aesthetics, sustainability and energy performance are at the core of our design philosophy. Our products integrate intelligent control technologies that optimize energy use, extend lifetime, and reduce maintenance. The result is lighting that not only meets the highest design expectations but also aligns with contemporary environmental and operational standards.

BRIGHT's hospitality lighting solutions embody balance—between luxury and functionality, emotion and efficiency. We create environments where guests feel at ease, inspired, and truly connected to the experience of place.



BR // GHT
SPECIAL LIGHTING





GRATIA



INTERIOR LIGHTING



BALLA 7 TABLE OVAL



REDONO



PAX





BR//GHT
SPECIAL LIGHTING



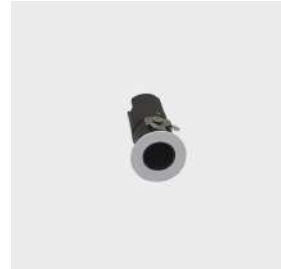
LATER



NOTUS 17 WALL



STELLA 20

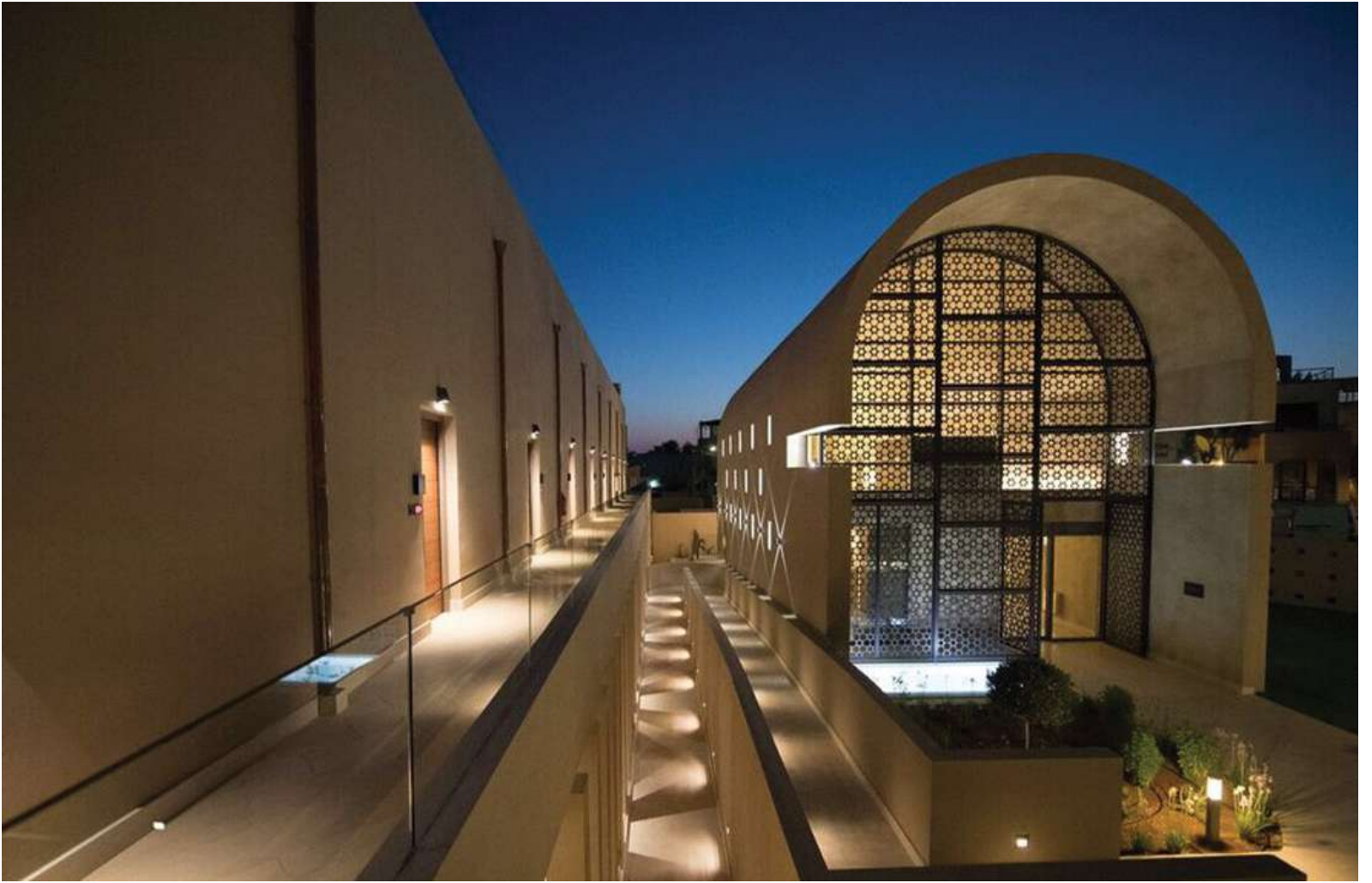


RITUS 30



RITUS 40





RITUS 35 TRIM



RITUS 70 TRIM SPOT



RITUS 50 MOB

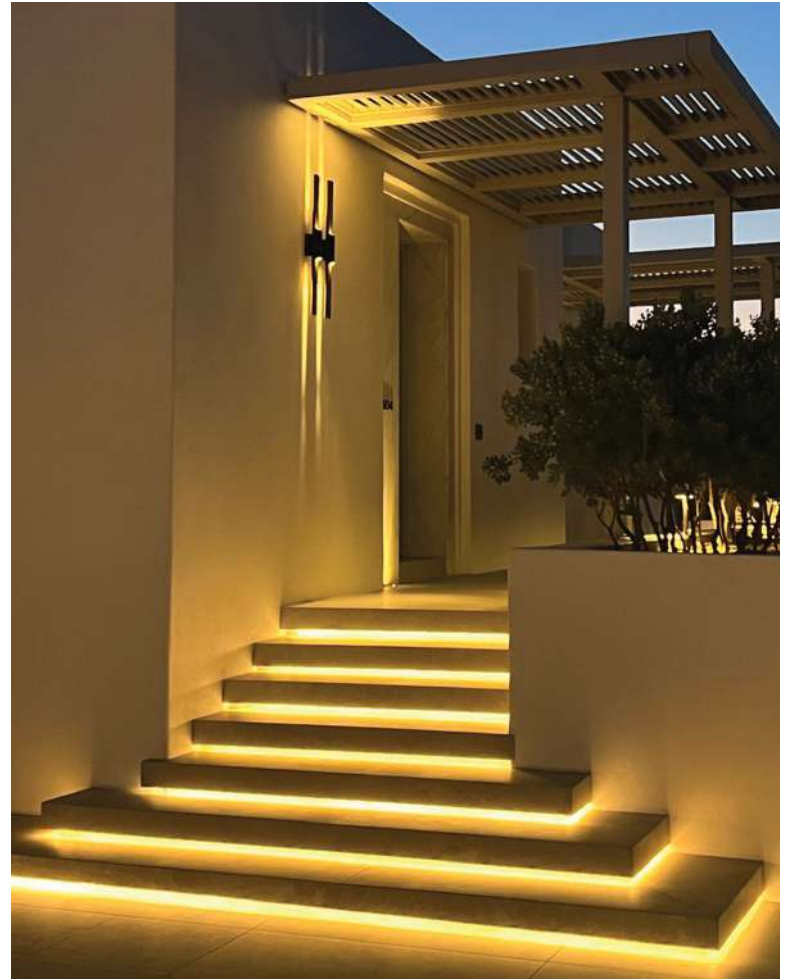


PALLA 1A



AVOLO M A WALL 20





BR//GHT
SPECIAL LIGHTING



ACTA 2



MINI AVOLO A WALL 3



MINI AVOLO 16 WALL 2F



RAVUS WALL 3



AGER 5 CLEAR





BIVIUS 1



PUDOR 3



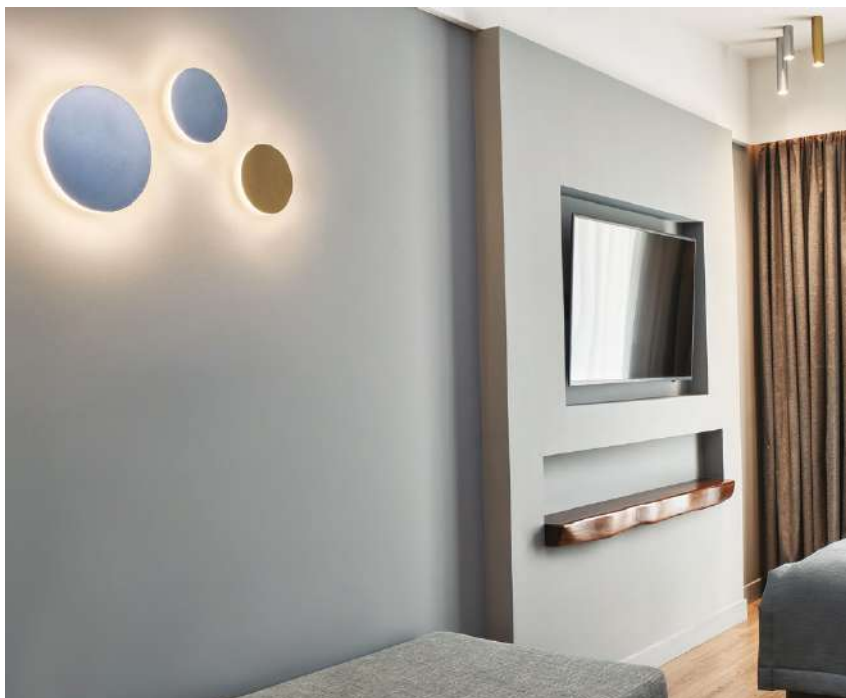
BONUS 2 SP



BELLE 1



ARA





BR//GHT
SPECIAL LIGHTING



ORDO 2 SP



LENIS 2



LENIS 1 WALL

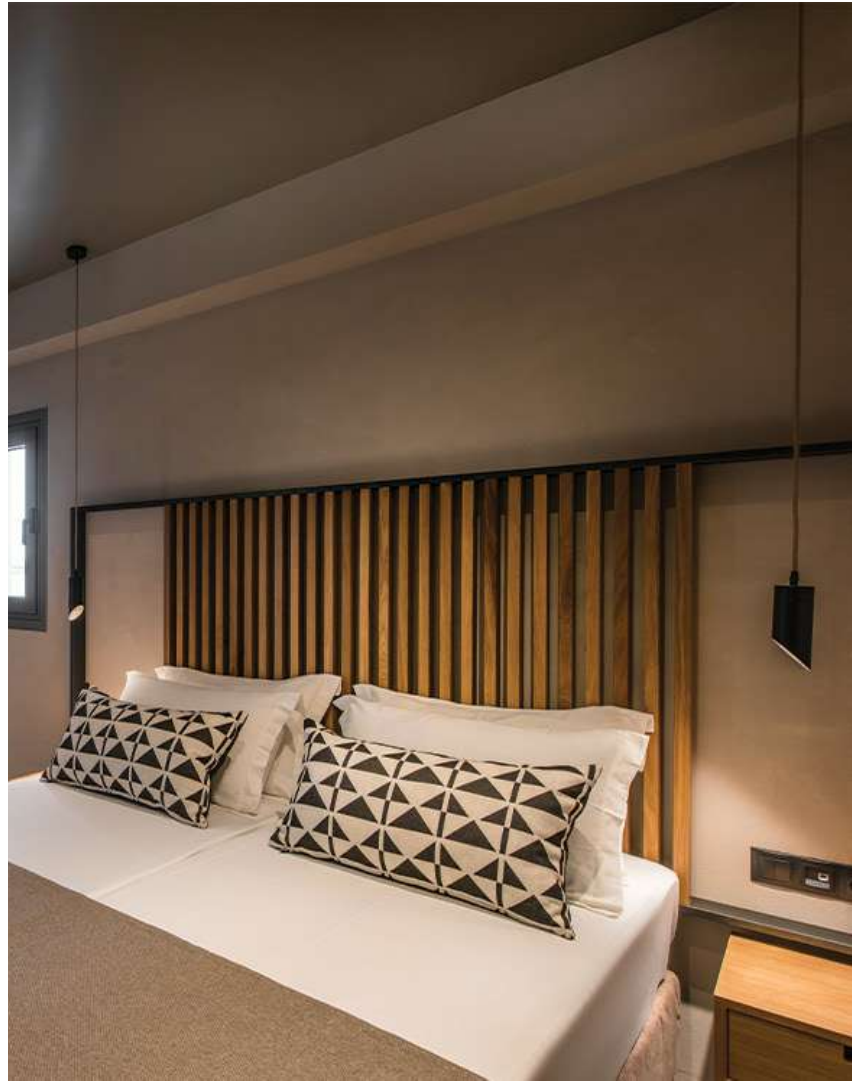


VOCO 1 WALL



TEGO 2





RAVUS WALL 5B



FERUS 30



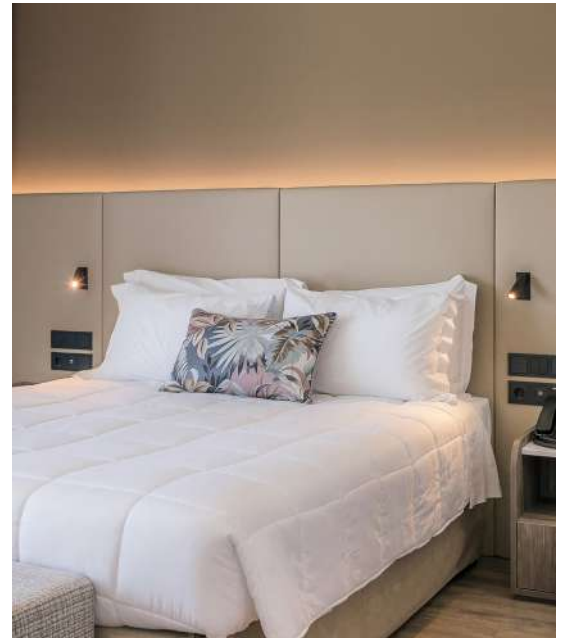
FERUS 60



COMIS 4 FERUS 20



PONOS SQ 42B H.P.LED



RESIDENTIAL LIGHTING



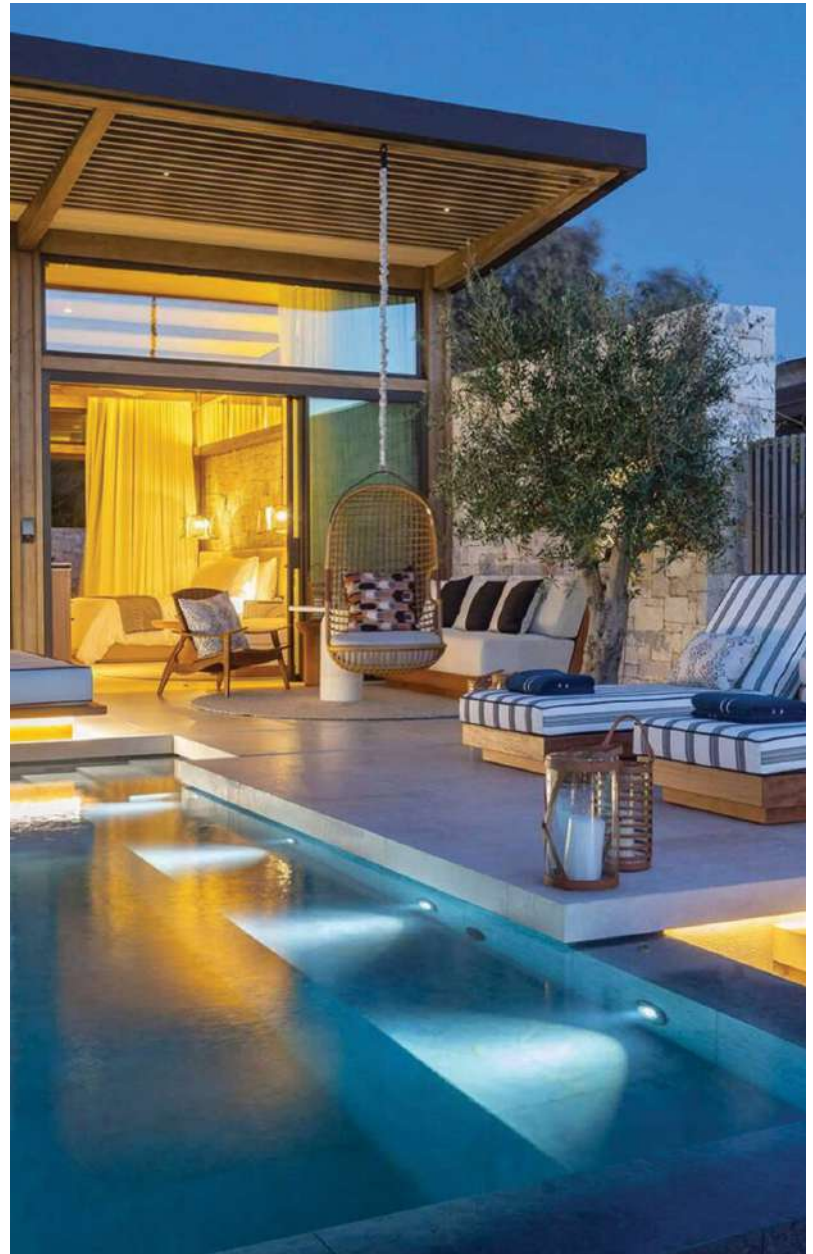
A home is not just a physical structure—it is a living environment that reflects who we are. It holds emotions, memories, and everyday moments that shape our lives. Lighting plays a vital role in defining the character of this space, turning architecture into atmosphere and daily routines into experiences.

Residential lighting should offer comfort, warmth, and a sense of balance while expressing the personality and lifestyle of its residents. The right light enhances mood, encourages relaxation, and supports well-being, transforming each room according to the time of day and the activities within it.

We believe that lighting should adapt seamlessly to people and their needs. Smart control, dynamic color tones, and the ability to shape light precisely allow for truly personalized environments—whether creating a cozy evening glow or a bright, invigorating workspace.

Quality and craftsmanship remain at the heart of what we do. Our luminaires combine advanced optical design with exceptional color rendering, ensuring natural tones and visual comfort. Every product—standard or tailor-made—is designed to harmonize with architecture, comply with all dimming systems, and be crafted from the highest-quality materials.

Light has the power to shape emotions and spaces. When used thoughtfully, it turns a house into a home, enhancing not only what we see but also how we feel.





FATUM



CULTUS



NARRO



FILIA 3 TABLE



BIVIUS 2 TABLE





BR//GHT
SPECIAL LIGHTING



TORRIS 2 FLOOR



CURA M SQ



VIGOR S-M-L OUT SQUARE



PENDO M3 F CEILING



FIRMUS B 50





GERO 3



PENDO SQ 2 CEILING



NARRO FLOOR



DONE 4 FLOOR



DONE 10 FLOOR





BR//GHT
SPECIAL LIGHTING



FORIS S S.S.LED



MINI AVOLO A FLOOR 36



AVOLO

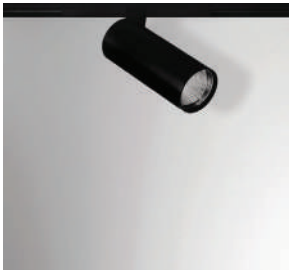


MONS A SP



PENNA 72 SP





LEGATUS POTIS S.S.LED



PENNA 100 SP



CURA



PERIMO 65



VERNO 61 LR FLOOR



BARS RESTAURANTS LIGHTING



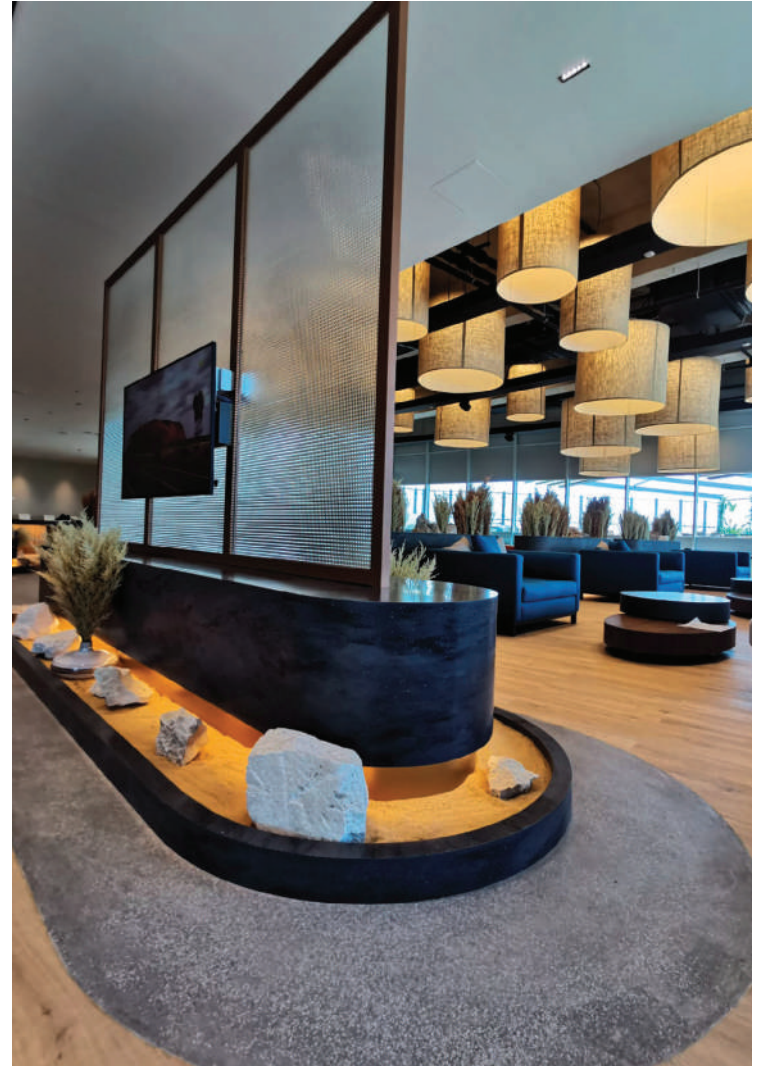
Lighting is the invisible ingredient that defines the identity of every bar and restaurant. It shapes mood, enhances flavors, and turns a simple visit into a memorable experience. A well-designed lighting concept does more than illuminate—it guides emotions, highlights design elements, and tells the story of the space through atmosphere and rhythm.

In hospitality design, light becomes part of the sensory journey. It interacts with texture, color, sound, and scent, setting the tone for each moment. Subtle contrasts, layered illumination, and the use of warm, dynamic tones invite guests to feel comfortable, intrigued, or inspired—depending on the desired mood. From a vibrant cocktail bar full of energy to a serene fine-dining setting that celebrates intimacy, lighting adapts fluidly to the environment's personality.

Our philosophy focuses on flexibility and harmony. Every project is approached as a living experience that changes throughout the day and evening. Adjustable intensity, precise color rendering, and advanced control systems allow seamless transitions—from daylight to after-dark sophistication—without disrupting the guest experience.

Equally important are the practical aspects. Lighting must support both aesthetic and operational needs: sufficient illumination on tables for clarity and comfort, visual guidance for movement within the space, and optimized conditions for staff efficiency and safety.

Each luminaire we create combines technological precision with visual artistry. Whether standard or custom-made, our products are designed to blend architecture, emotion, and functionality into one cohesive narrative—where light is not just seen, but felt.





BACA ROUND 80



SPES



PILUM



DORES SQ



MONS D





BR//GHT
SPECIAL LIGHTING



BALLA



SILVA 10



SILVA 12



SERRA



DONE 4 SP 3F





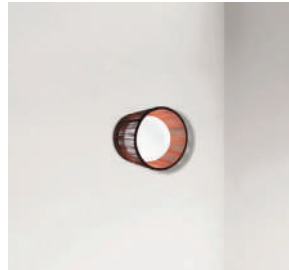
BUCCA 7



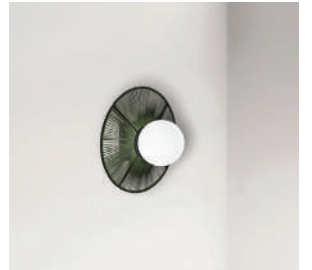
BUCCA 5



LATER STONE HEXAGON



LIMES CIRCLE



LIMES ROUND





BR//GHT
SPECIAL LIGHTING



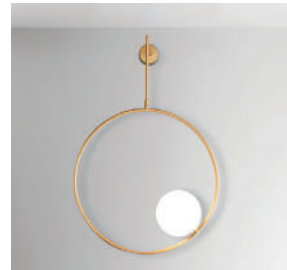
LEGATUS 35 SHADE



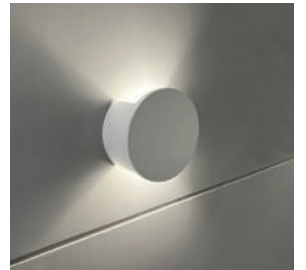
MONS A OPAL



CURA WALL

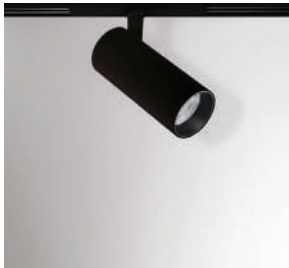


MINI AVOLO A WALL 5



EBUR 3

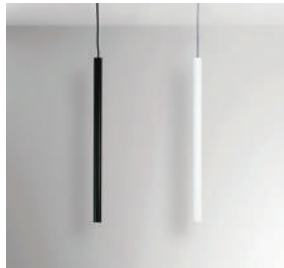




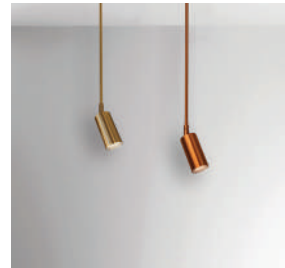
LEGATUS POTIS N S.S.LED



FONSI L



FERUS SP LED



TORRIS 3 DZ



LOCUS SP 3F



WELLNESS LIGHTING



Lighting in wellness spaces is an essential element in shaping the experience of balance, relaxation, and rejuvenation. It connects body and mind through light, rhythm, and atmosphere. The goal is not only to illuminate but to create an environment that naturally enhances well-being and supports the human circadian rhythm.

In wellness areas, light must adapt to the function of each space—whether energizing in a fitness zone or calming in a spa or meditation area. Carefully tuned color temperatures, soft contrasts, and smooth transitions help define these experiences. Dynamic lighting systems with precise control allow the light to evolve throughout the day, responding to the energy and emotions of the user.

For areas of physical activity, high-quality illumination with minimal glare ensures comfort, safety, and visual clarity during movement. In contrast, spaces dedicated to rest and recovery call for gentle, low-level lighting that soothes the senses and creates a cocoon of tranquility.

Beyond functionality, lighting also contributes to the identity of the wellness environment. Subtle accents, RGB layers, and indirect light effects enhance architectural textures and evoke emotional connection.

Our approach combines human-centric design with advanced lighting technology, ensuring that every environment—whether active or serene—feels natural, balanced, and emotionally engaging. Light becomes a tool for transformation, guiding every visitor toward comfort, focus, and inner harmony.





LINEAR LIGHTING PROFILES



LEGATUS ROUND 50



CURA SP

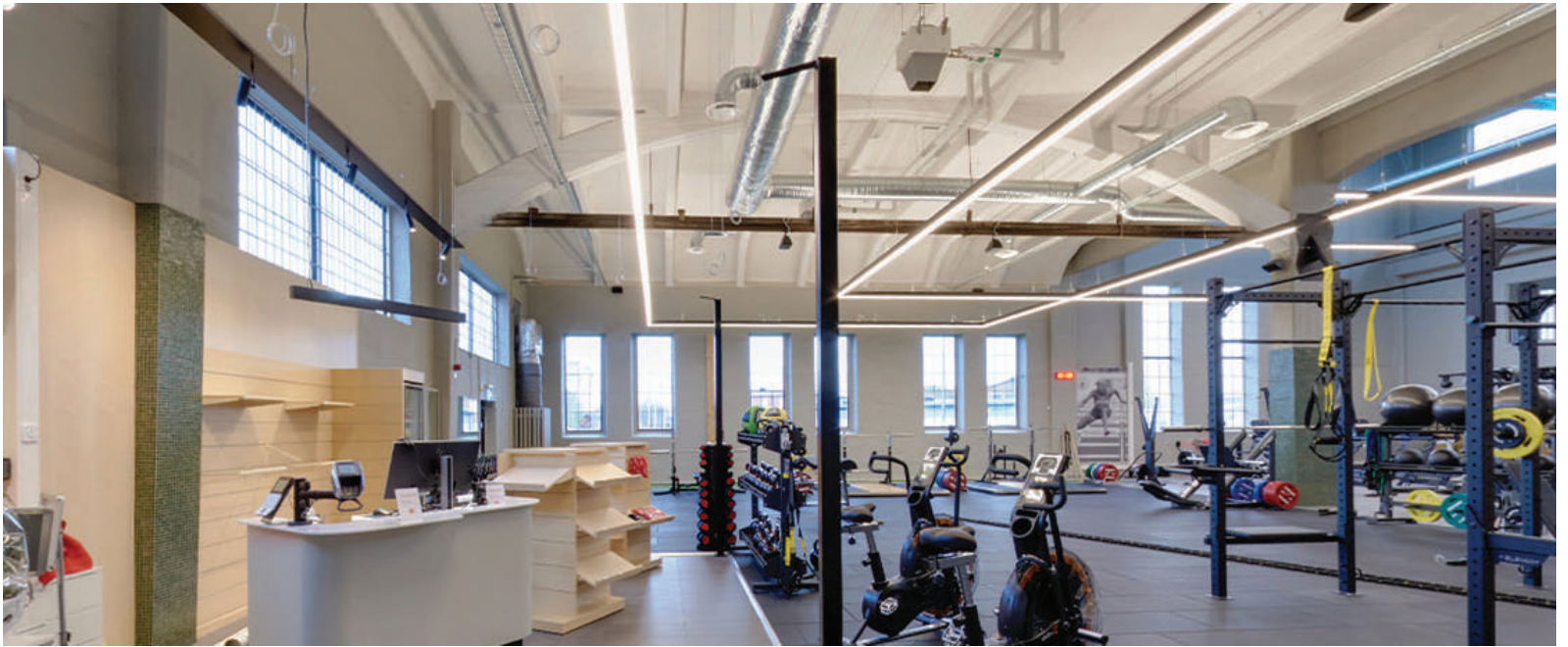


LENTE 2 SQ



VITIS 120/200





BR//GHT
SPECIAL LIGHTING



RITUS 60 MOB IP65 TRIMLESS



RITUS 80 MOB IP65



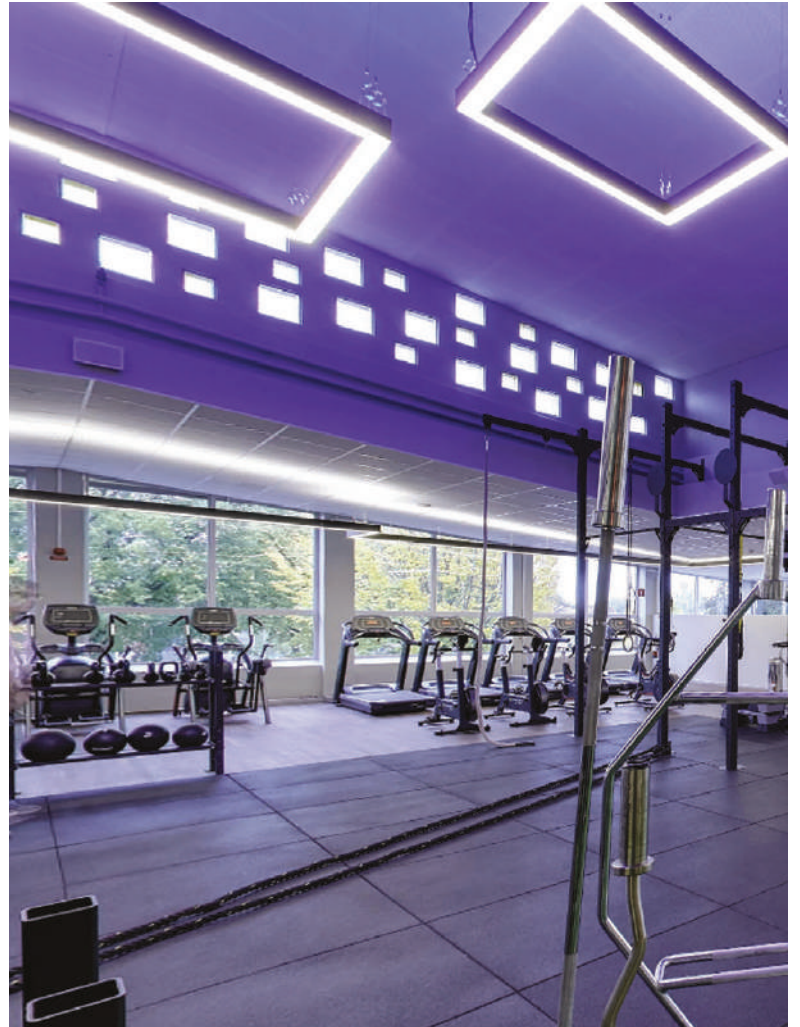
SERO



CAVUS 2



PENDO 2 CEILING





FIGO UP DOWN



SILVA 12 P.S.S.LED



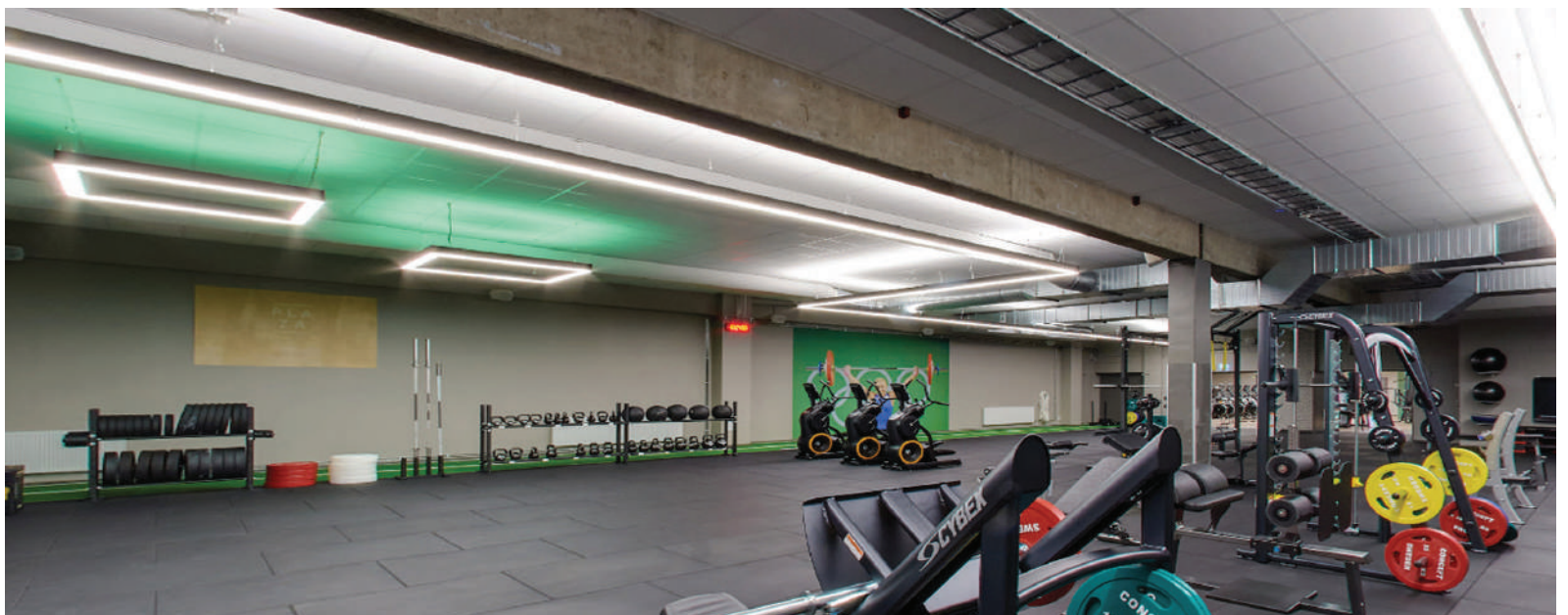
ALBUS 1 LED



TORRIS SP 90



RAVUS WALL 8



HEALTHCARE LIGHTING



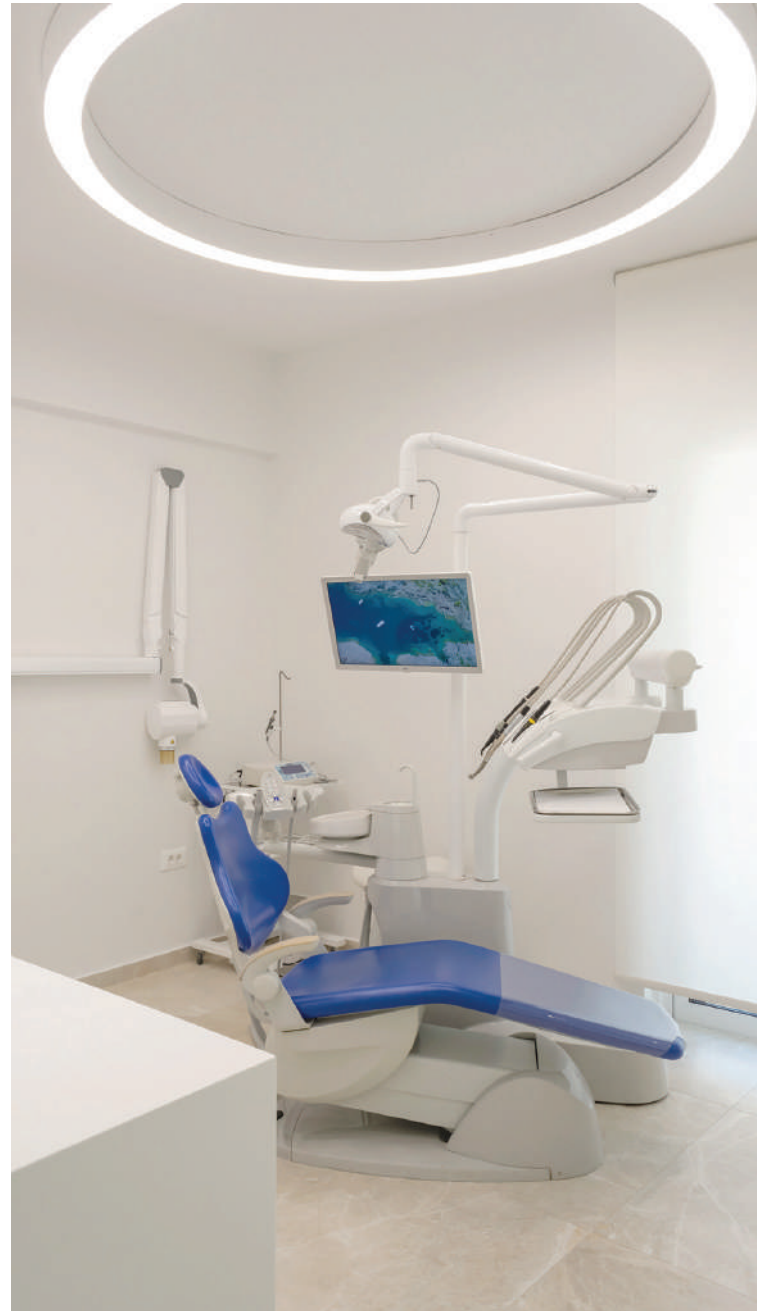
Lighting in healthcare environments plays a crucial role in both functionality and human well-being. It influences the quality of care, patient recovery, staff performance, and the overall sense of safety and comfort within the space. Effective healthcare lighting design goes beyond compliance—it integrates precision, reliability, and emotional sensitivity.

Each area within a healthcare facility has unique requirements. Examination rooms and operating theatres demand high illumination levels, exceptional color rendering, and absolute visual accuracy. Patient rooms, on the other hand, benefit from softer, adjustable lighting that supports rest and promotes healing. Corridors, offices, and waiting areas require balanced, glare-free lighting that enhances orientation, focus, and a calm atmosphere.

Modern healthcare lighting focuses on creating environments that support the natural circadian rhythm, reduce stress, and improve overall well-being for patients, visitors, and medical staff alike. Dynamic lighting control systems enable seamless transitions between functional brightness and soothing ambient tones, adapting to each task and time of day.

Reliability and safety remain fundamental. High IP ratings, durable materials, and consistent light quality ensure that fixtures perform flawlessly under demanding conditions. At the same time, energy efficiency and advanced optical technology help create sustainable, long-lasting solutions.

Our approach to healthcare lighting combines human-centered design with technical excellence—offering light that heals, supports, and inspires trust in every space where care is given.





BACKLIGHT PANEL PRISMATIC UGR



BACKLIGHT PANEL 2 PRISMATIC UGR



PENDO MS CEILING



CITRA



SICA





BR//GHT
SPECIAL LIGHTING



CERNO 2



CERNO 4 IP65



CERNO 8

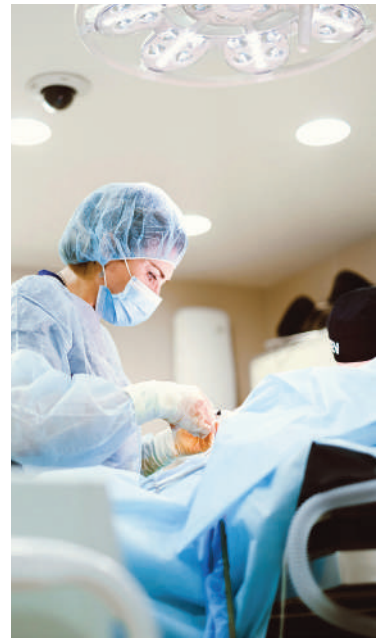


CERNO 10



CERNO 12





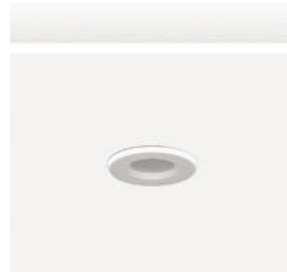
BACKLIGHT PANEL IN PRISMATIC UGR



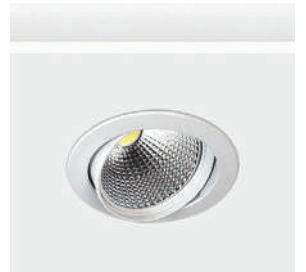
RATUS



CODEX 5



SPOT IP54



MAX MOBILIS S.S.LED



CULTURE MUSEUM LIGHTING



Museums, galleries, and exhibition spaces require a refined and flexible lighting design that becomes an integral part of the architecture and storytelling. Beyond functionality, lighting shapes atmosphere, highlights form and color, and enhances emotional connection.

Today's approach combines energy efficiency, smart control systems, and human-centric principles to achieve balance between aesthetics, sustainability, and preservation. Each museum's identity defines its lighting strategy — whether through focused illumination on artworks or through immersive ambient lighting that guides visitors naturally.

LED and tunable white technologies allow precise control of color temperature and intensity, ensuring ideal presentation while protecting sensitive exhibits. Intelligent management systems offer adaptability for exhibitions, educational events, or interactive experiences.

BR//IGHT designs and manufactures both standardized and custom lighting solutions that meet the most demanding requirements of cultural and museum spaces — blending innovation, craftsmanship, and creativity to inspire curiosity and elevate the visitor experience.





CALIX 2



CALIX 4



NON



VENTUS 2P ADTR



VELOX 5 Q





BR//GHT
SPECIAL LIGHTING



ARCUS TORRIS



LEGATUS SPOT 25



LEGATUS SPOT 35



LEGATUS SPOT 80



LEGATUS VISO 2





LEGATUS VISO 2 1F SPOT



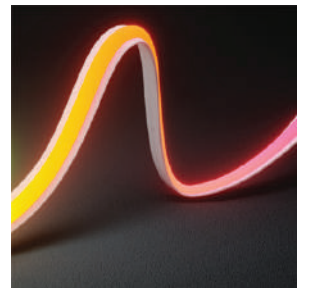
TAPE LED AG 1617



TAPE LED OPTIC 1617 S



TAPE LED ACE 1010 WHT



TAPE LED APO 15 MEDIA





BR//GHT
SPECIAL LIGHTING



LEGATUS SPOT 25 L



LEGATUS SPOT 35 1F



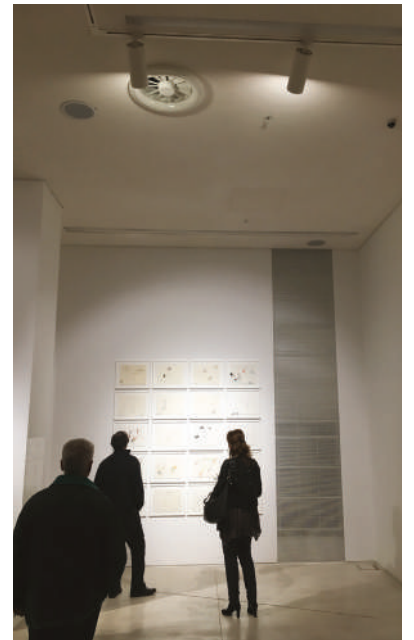
LEGATUS SPOT 25 L IN

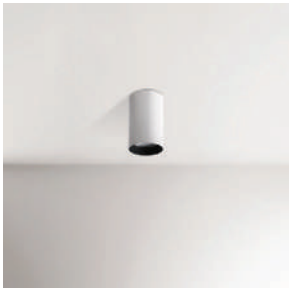


LEGATUS FUSUS

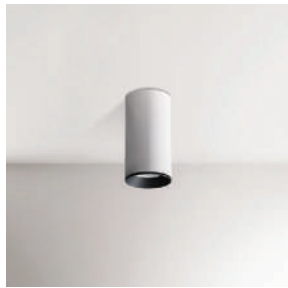


BENE 4F ROUND OUT





SONO OUT S



SONO OUT M



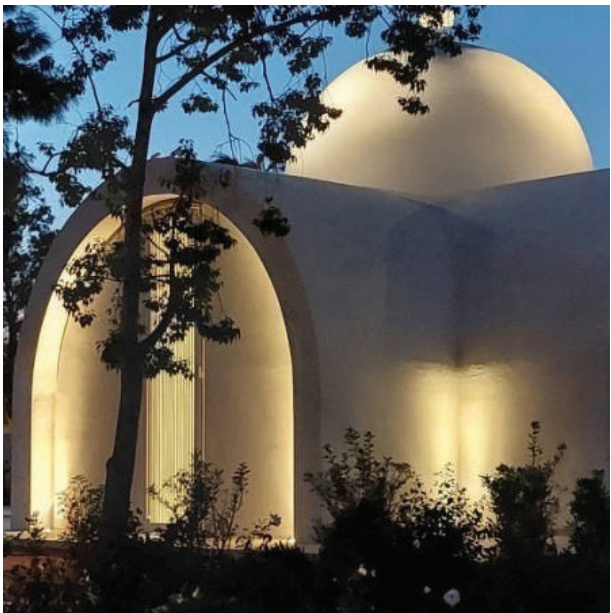
LEGATUS SPOT 20 2F



NOTUS 25 DAISY CEILING



BENE 1F S



EDUCATION LIGHTING



Lighting in educational spaces plays a crucial role in shaping concentration, comfort, and creativity. A well-balanced lighting design supports students' focus, enhances well-being, and creates an inspiring environment for both learning and collaboration.

Modern lighting concepts combine natural and artificial light through intelligent control systems and advanced dimming options, ensuring optimal illumination throughout the day with reduced energy consumption. This dynamic balance improves visual comfort and helps adapt the space to different activities — from lectures and reading to digital interaction and group work.

Linear LED luminaires with high-quality light sources provide excellent color rendering, anti-glare optics, and contemporary design. Their minimalist appearance blends seamlessly with modern architecture while ensuring high performance and uniform light distribution.

BRIGT designs and manufactures standardized and tailor-made lighting solutions for classrooms, laboratories, libraries, and multi-purpose areas. Custom fixtures in various shapes, colors, and materials can add a sense of playfulness and creativity, turning everyday spaces into environments that inspire engagement, imagination, and learning.





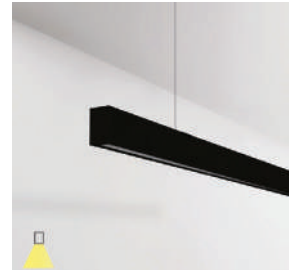
NOTUS 16 LINEAR LED



NOTUS 1 LINEAR LED



NOVITAS 3



NOTUS 19 LINEAR LED SP

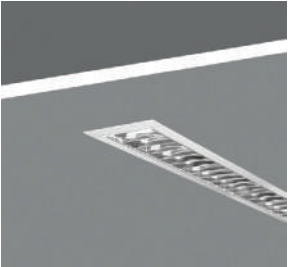


NOTUS 16 SQUARE LINEAR LED SP





BR//GHT
SPECIAL LIGHTING



NOTUS 3 CROSS



NOTUS 3 LINEAR LED



COMIS RING BASE



BENE 5F IN ASSYMETRIC

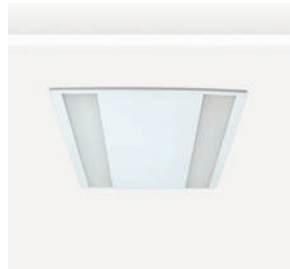


BENE 4F ROUND IN





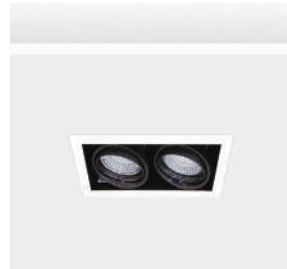
POSCO 10 LED



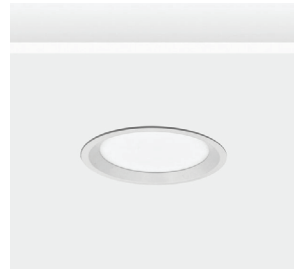
POSCO 2 IN LED



HONOR M N WHITE OPTIC S.S.LED



MINOR 2F S.S.LED



VIGOR IN M





BR//GHT
SPECIAL LIGHTING



SECTA SP



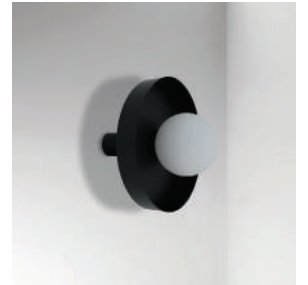
RAVUS WALL 4L



VALLO 1 TABLE



TORRIS 3 TABLE 2



VALEO WALL





SISTO 3



SECTA 3 SP



SISTO 5



MONS B OPAL COLORS



SISTO 7



LANDSCAPE LIGHTING



Landscape lighting transforms outdoor environments into vibrant, inviting spaces that extend their beauty and functionality after sunset. Beyond visibility, it enhances the character of architecture and nature, highlighting vegetation, pathways, gathering areas, and water elements while creating a sense of depth and balance between light and shadow.

Modern outdoor lighting emphasizes energy efficiency, durability, and adaptability through advanced LED technology and smart control systems. These allow for the adjustment of intensity and color temperature according to time, activity, or ambience — enriching the nighttime experience while minimizing energy use and light pollution.

BRIGHT offers a wide range of high-quality products designed for every type of outdoor project: bollards in various shapes and materials, miniature floodlights, compact wall luminaires, and high-performance projectors for accentuating trees and large-scale vegetation. Each fixture combines minimal design with robust engineering, ensuring long-lasting performance even under demanding weather conditions.

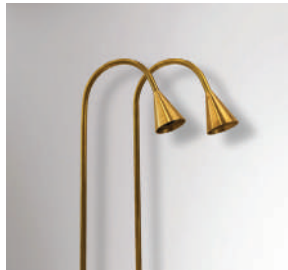
For coastal or humid environments, we use anti-corrosion materials such as stainless steel 316, brass, or specially treated aluminum, maintaining both aesthetics and resilience over time.

Through thoughtful lighting design, landscapes evolve into atmospheric, safe, and inspiring spaces — where architecture and nature coexist beautifully under the art of light.





VISO FLEX



VISO FERUS 55



VISO TALIS



VISO 1



VISO 2





BR//GHT
SPECIAL LIGHTING



PENDO WALL



PRODO 1 WALL



TERES 1 BRASS DZ + TR + NAIL



VERGO NAIL 2



VEXO





VARIUS 7



TERES M13 SMOOTH



VERGO WALL 10



VERGO WALL 3



VERGO NAIL 5

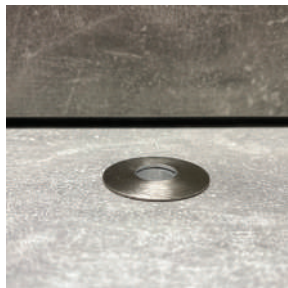




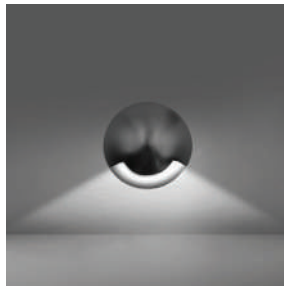
BR//GHT
SPECIAL LIGHTING



FAMA STEPS 2



FAMA S



FAMA S STEPS 1



FAMA L GROUND



FAMA STEPS 2 WALL





PRODO 4



NUPER 4



MONEO



NOXA



NOXA 2



URBAN LIGHTING



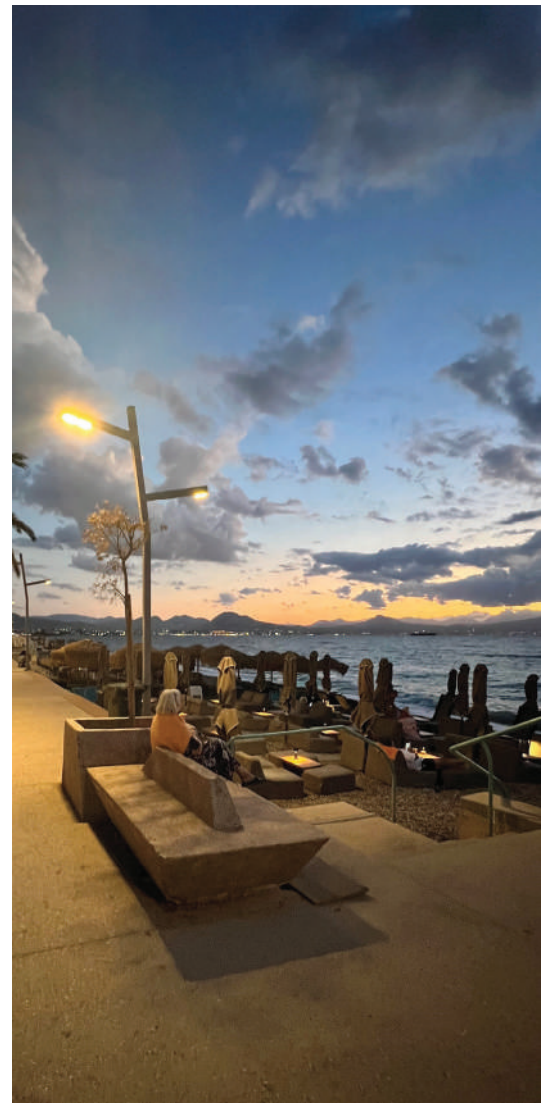
In urban environments, lighting is more than a functional necessity — it defines how people experience the city after dark. Safety remains a priority, but modern urban lighting also aims to create a sense of comfort, orientation, and visual harmony. Well-designed lighting helps residents and visitors feel secure, connected, and inspired as they move through streets, parks, and public spaces.

The night cityscape is a dynamic composition of roads, monuments, green areas, plazas, and pedestrian zones. Each of these spaces requires a different lighting approach that balances functionality, aesthetics, and sustainability. Modern lighting strategies emphasize energy efficiency, minimal light pollution, and digital control systems, ensuring optimal performance while preserving the night sky and urban identity.

BRIGHT offers a comprehensive range of advanced street and urban lighting systems, including bollards, floodlights, pole-mounted fixtures, and architectural projectors. These luminaires combine durability, weather resistance, and refined optical control, delivering uniform illumination and high visual comfort.

Through intelligent design and advanced materials, BRIGHT lighting enhances urban spaces, promoting safety, accessibility, and aesthetic continuity — illuminating cities in a way that respects both people and the environment.

BR//GHT
SPECIAL LIGHTING





VILLA



SOLUS 2



ROTONDA



VILLA FAROS



TERES M FORTIS

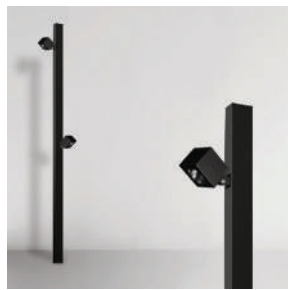




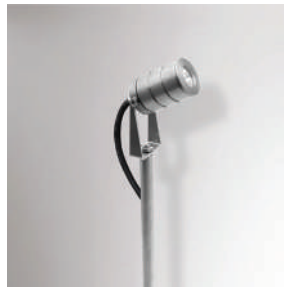
BR//GHT
SPECIAL LIGHTING



TERES M7 SQUARE SH 1F HEAVY



TERES M FORTIS SQUARE



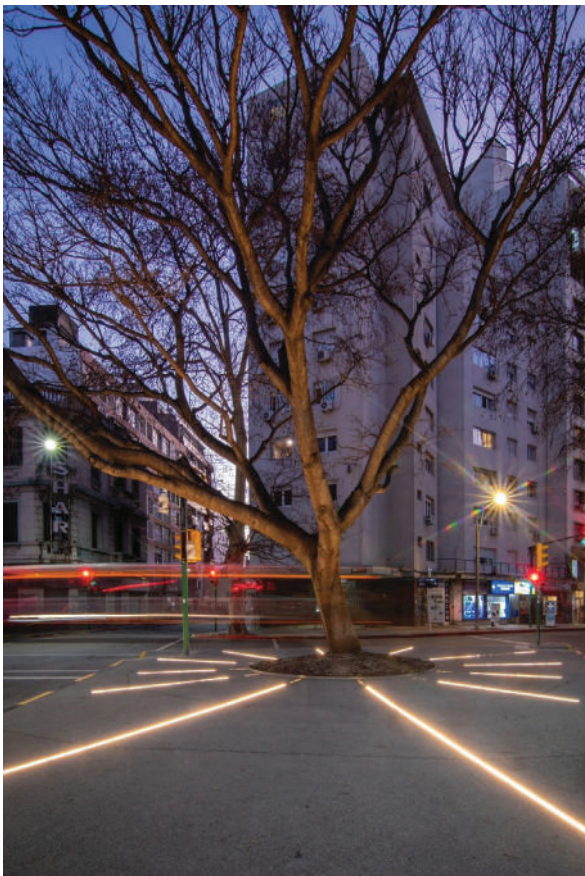
FAMA S OUT DZ



PENDO 2 IP65 CEILING S.S.LED



PRODO 10





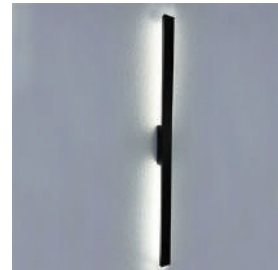
MACTO 1



MACTO 1 B S.S.LED



MACTO 2



VERGO WALL 1



MACTO 3





BR//GHT
SPECIAL LIGHTING



PRODO 12



TALIS 2



TALIS M



COPIA SMOOTH



BRUTUS





TERES M SMOOTH BRASS



NOSTER 5



CONCRETE CONTO 1L



NUX M SQUARE



VERGO NAIL 1



FACADE LIGHTING



Facade lighting transforms architecture into a visual statement — it gives depth, dimension, and a dynamic identity to a building after sunset. Beyond aesthetics, it enhances the perception of scale and texture, highlighting structural lines, materials, and details that define the architectural concept. Through carefully designed lighting, a building can communicate emotion, function, and character within the urban landscape.

Modern lighting techniques allow designers to mimic the qualities of natural light and create balanced transitions between brightness and shadow. The use of intelligent control systems enables dynamic lighting scenes that adapt to time, weather, or special events, turning façades into living surfaces that interact with their surroundings.

BRIGHT applies the latest optical technologies and precision engineering, combining advanced materials with minimal, elegant design. The result is a lighting solution that ensures high performance and visual comfort, with minimal visual intrusion on the façade itself.

The company specializes in waterproof linear luminaires available in different power levels, optical distributions, and mounting options — ideal for surfaces of all types and dimensions. With the support of digital design tools, photometric simulations, and sustainable production methods, BRIGHT develops lighting scenarios that combine creativity with energy efficiency, following the principles of ecological design.

Through thoughtful integration, façade lighting not only enhances architecture but also contributes to a building's identity, connecting it harmoniously to its environment and transforming it into a landmark of light and innovation.





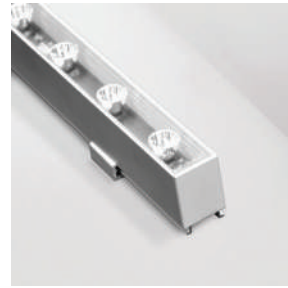
NINIO 2 H.P. LED



DURUS 3



DENUS GROUND INOX H.P. LED



NOVUS OUT H.P. LED REF



DENUS OUTDOOR H.P. LED





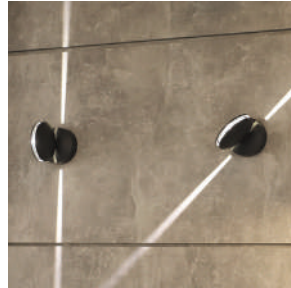
BR//GHT
SPECIAL LIGHTING



REGIO OUTDOOR H.P.LED



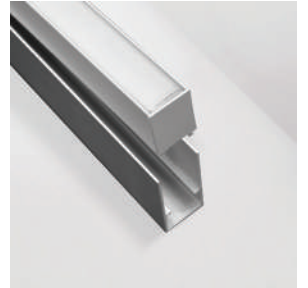
DECUS



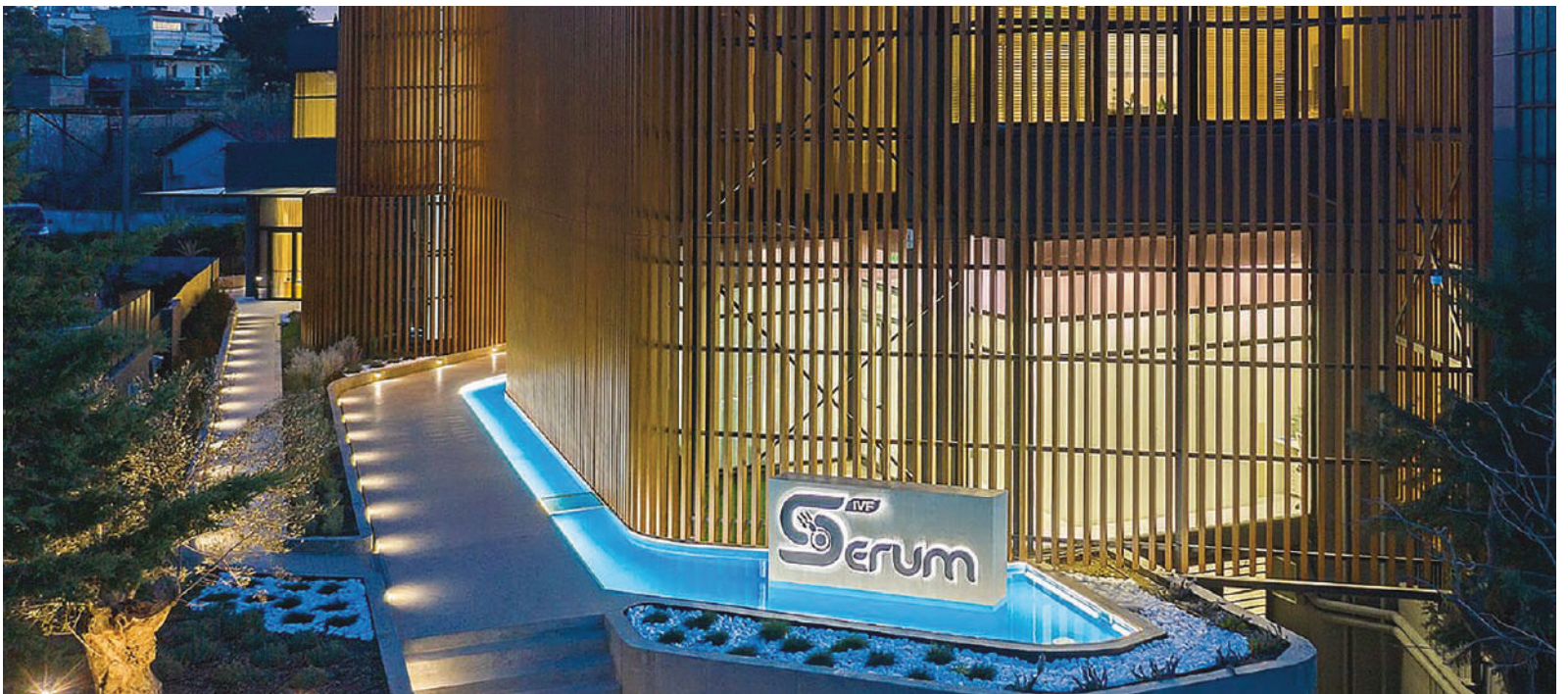
DECUS 3

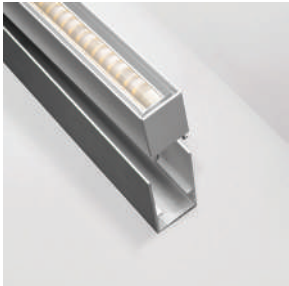


DECUS 5



NOVUS IN TAPE LED OPAL





NOVUS IN TAPE LED LENS



FORTIS Q LED



FORTIS Q SQUARE LED



DURUS 6



SATIS OUTDOOR H.P.LED





BR//GHT
SPECIAL LIGHTING



DURUS



MINI TERES 1 SQUARE SPOT



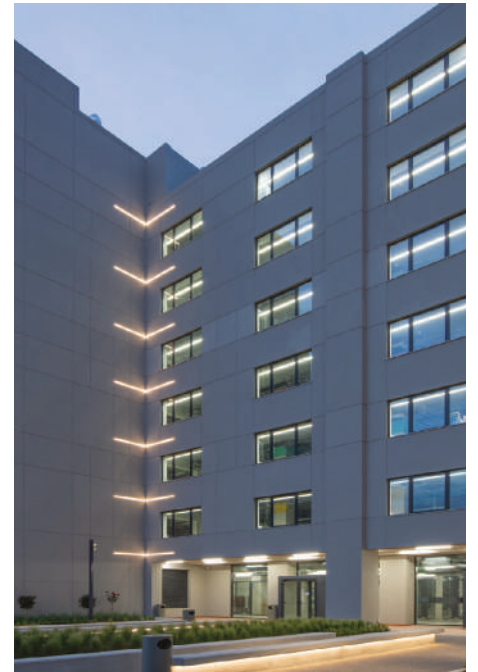
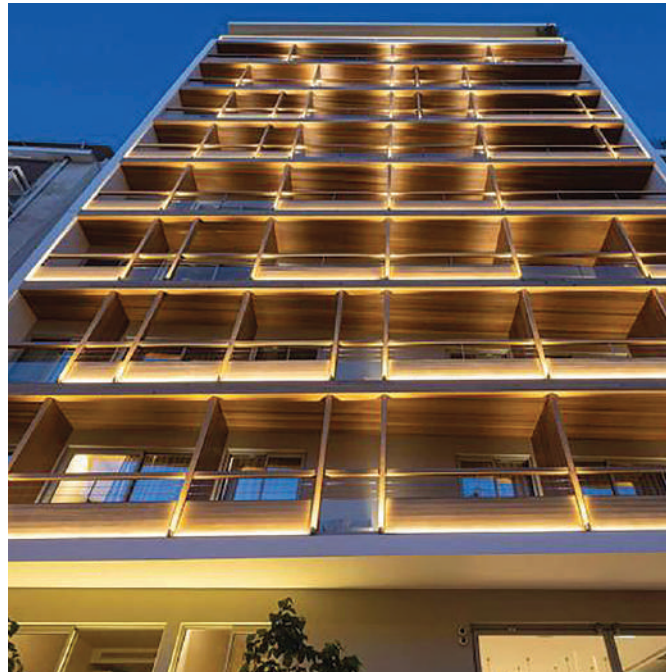
MINI TERES 1 SPOT H.P.LED



FAMA OUT FOCUS



FAMA L F OUT





LEDLINE ASTON



TAPE LED ACE 1617 MEDIA RGBW



TAPE LED ACE 1617 S IQ



TAPE LED ACE 1617 S RGBW



TAPE LED ACE 1617 3D WHT



SPORTS COMPLEX LIGHTING



Lighting for sports facilities is no longer just about meeting the required lux levels. It plays a key role in shaping the atmosphere, enhancing athlete performance, and creating an engaging experience for spectators. The design must deliver precision, comfort, and visual balance, while ensuring safety and energy efficiency in every area of the venue — from playing fields and tracks to stands and surrounding spaces.

BRIGHT develops high-performance lighting systems that provide excellent color rendering, uniform distribution, and minimal glare. Through advanced optics and smart control technologies, light intensity can adapt to different events, training sessions, or broadcast needs, maintaining optimal visibility and reduced energy consumption.

Our BRIGHT PLUS department ensures that all projects are designed in accordance with local and international sports regulations, including those for television and internet broadcasting. Each lighting concept is carefully studied to highlight the architecture of the facility, enhance brand visibility, and support both day and night operation.

By combining sustainability, efficiency, and visual comfort, BRIGHT transforms sports complexes into dynamic, inspiring environments where performance, precision, and technology work in perfect harmony.





SENEX SPORT | 300W - 400W - 500W - 600W ▶



SENEX SPORT | 750W - 1000W - 1200W ▶



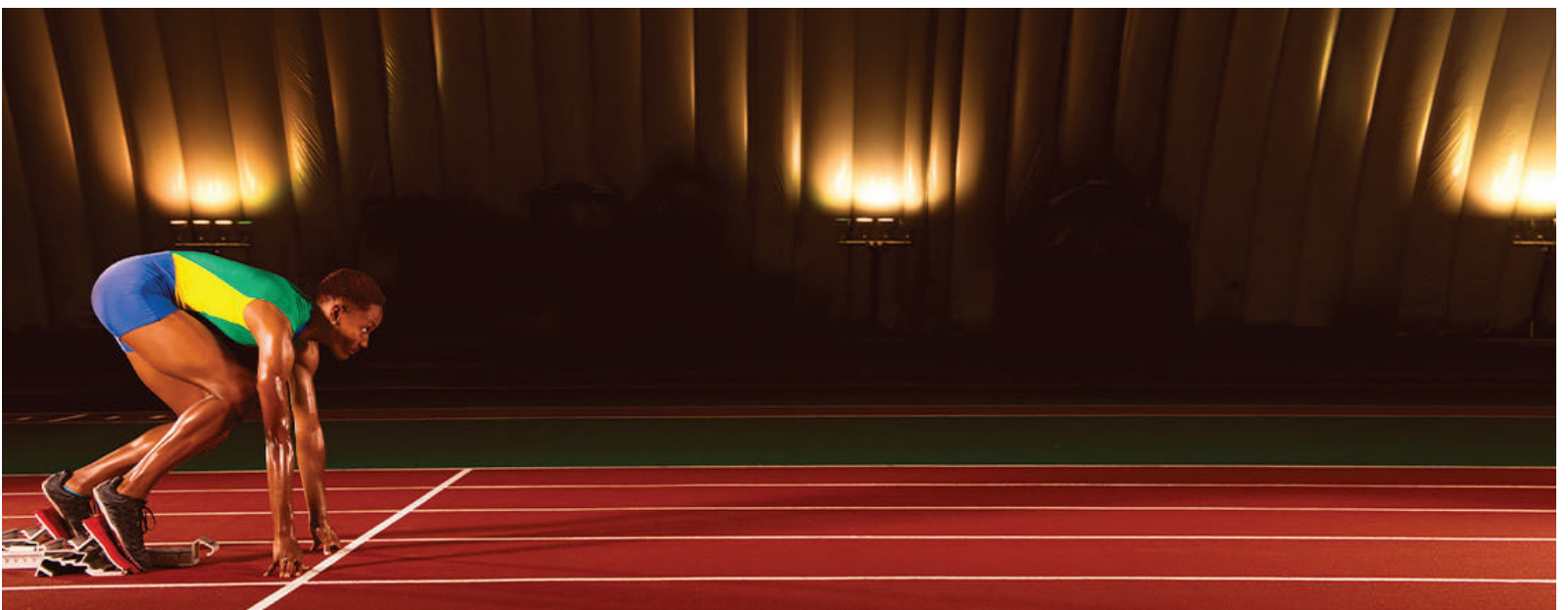
SERENO 250W ▶



SERENO 500W ▶



SERENO 750W ▶





ALTOR



STRADALE M



FL 08



FL 09



MAC TO NOXA

BR//GHT
SPECIAL LIGHTING





TERES 1 CEILING



TERES 1 Q DZ



NOXA BRASS



AMES 50



AMES 200





BR//GHT
SPECIAL LIGHTING



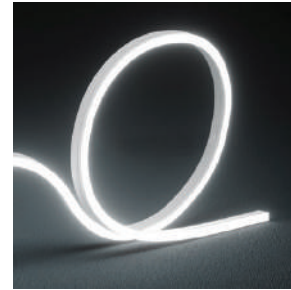
CELER 2 SQ



NOXA OUT BRASS



NEPA MAX OUTDOOR

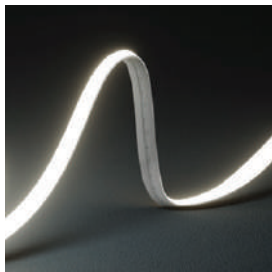
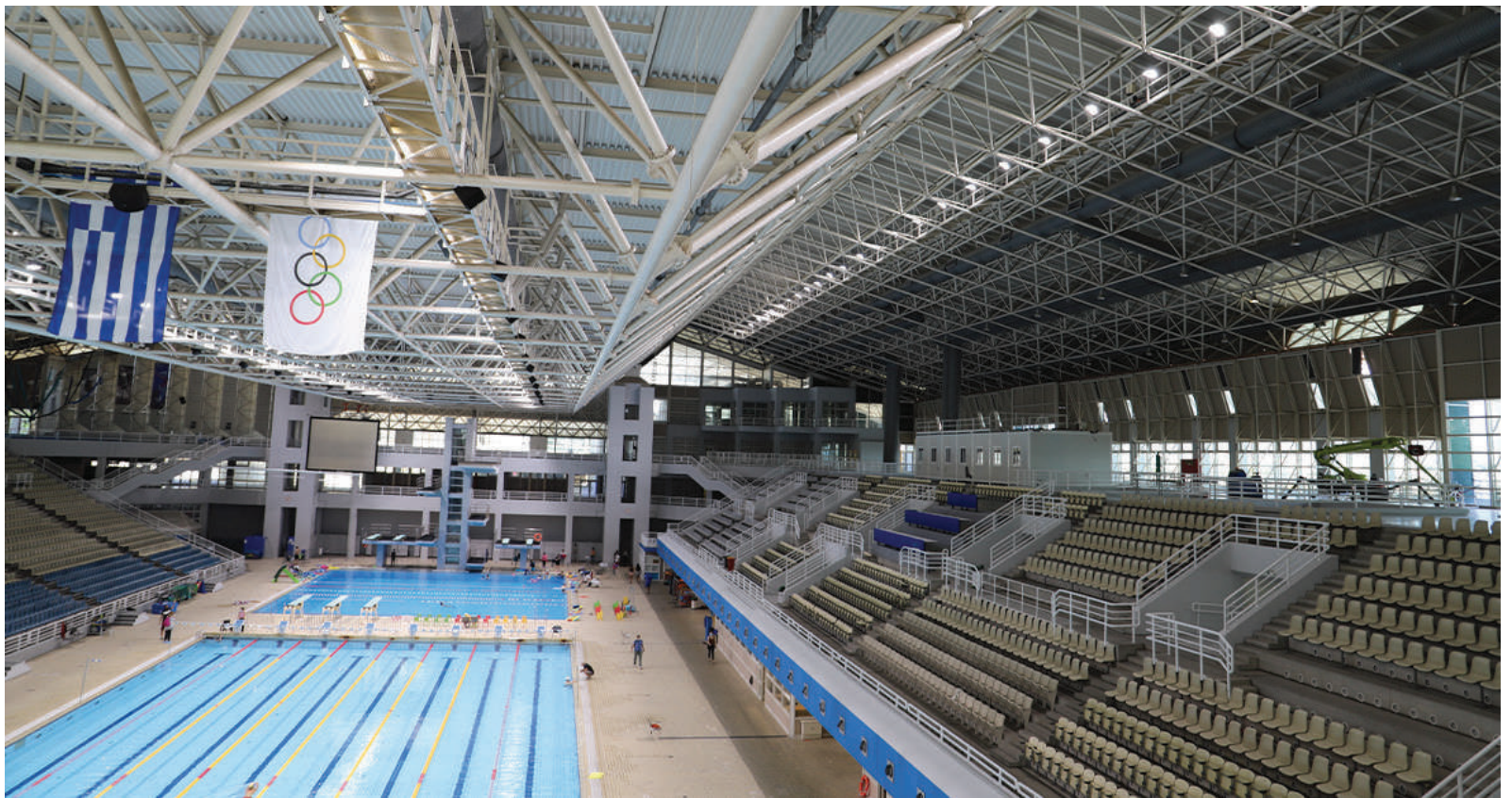


TAPE LED ACE 1220 IQ



TAPE LED ACE 1220 RGB





TAPE LED APO 10 HE



TAPE LED COVERFLEX WHALE PRO



RAVUS WALL 6



VEHO ROUND



VEHO SQUARE



INDUSTRIAL & LOGISTICS LIGHTING

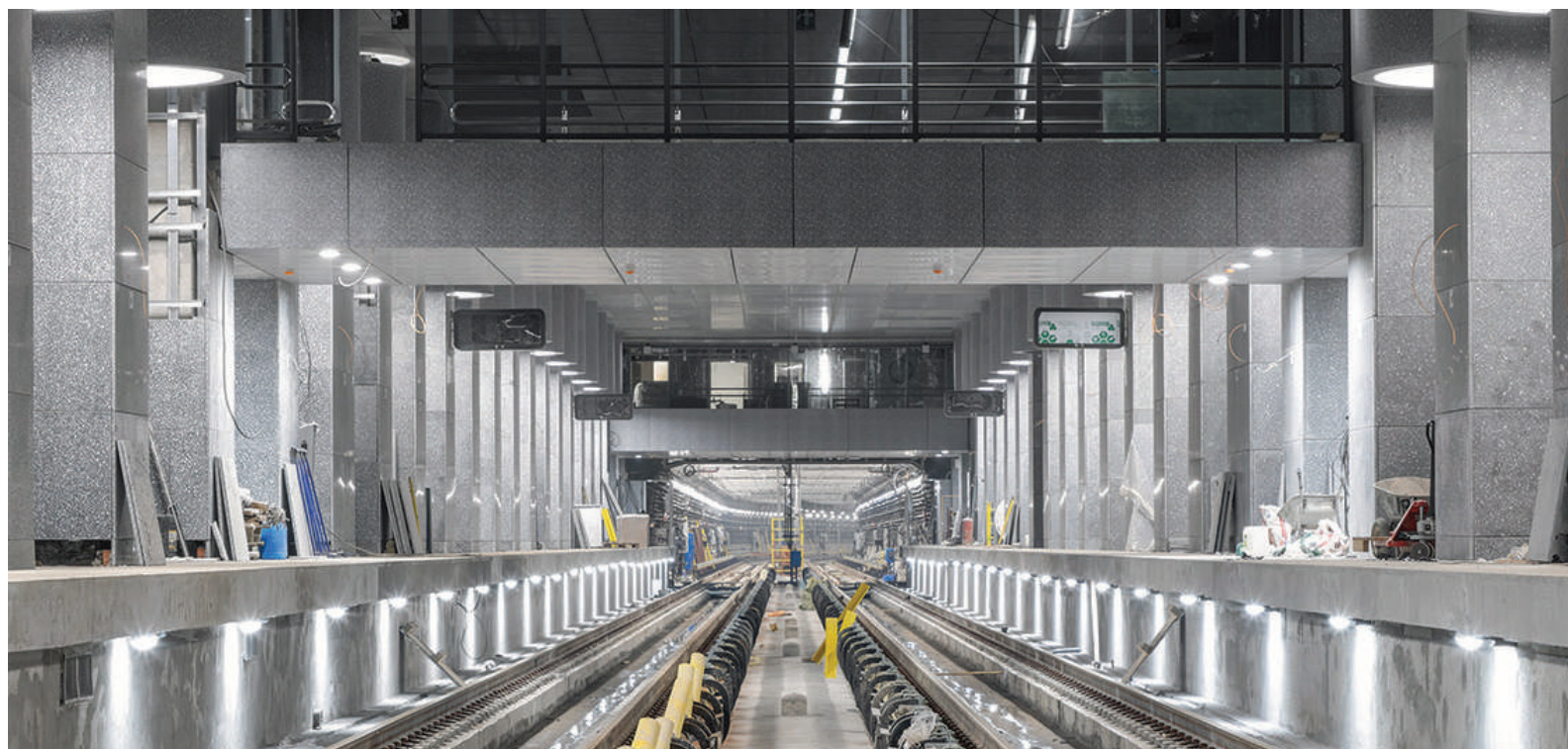


Lighting in industrial spaces, storage areas, and logistics centers requires a carefully planned approach that combines efficiency, reliability, and visual comfort. The right lighting design goes beyond functionality — it supports productivity, safety, and the overall well-being of employees, while highlighting the architectural and operational identity of the facility.

Modern LED lighting systems by BRIGHT deliver excellent performance with minimal energy consumption and maintenance needs. High-bay and low-bay luminaires provide outstanding uniformity, precise optical control, and high color rendering, ensuring accurate visibility for detailed tasks and machinery operation. Their robust construction and advanced thermal management guarantee durability even in areas exposed to dust, humidity, or temperature fluctuations.

Intelligent lighting management systems, sensors, and dimming controls enable dynamic adjustment based on occupancy and available daylight. This not only contributes to significant energy savings but also enhances safety and creates a more adaptive, human-centered environment.

BRIGHT places emphasis on sustainable materials and environmentally responsible design, ensuring that every lighting solution contributes to a lower carbon footprint. Our comprehensive approach transforms industrial and logistics areas into smart, high-performing environments where innovation, safety, and comfort coexist seamlessly.





GENUS



GENUS 7



GENUS 9



MANCO SYSTEM 1



MANCO SYSTEM 2

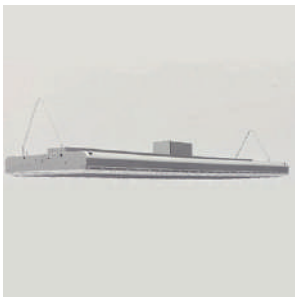




BR//GHT
SPECIAL LIGHTING



HL 03



LHB 01



MAGNUM GAS



NINIO 2 OPAL LINEAR LED 3 INOX



MERUS 2





MORA



ANGO 2



ANGO 4



PURE 230 CLEAR



FLUXUS M-T LED



TRANSPORTATION LIGHTING



Transportation areas such as airports, ports, metro stations, and train terminals are dynamic environments that operate continuously and serve millions of people daily. The lighting design in such spaces must ensure visibility, safety, and comfort while creating a sense of orientation and security for travelers. Proper illumination enhances the visual perception of space, supports smooth movement, and strengthens the architectural identity of each transportation hub.

BRIGHT's lighting solutions combine performance and reliability with advanced optical technology and precise control. The result is uniform, glare-free lighting that allows clear face recognition, prevents visual fatigue, and minimizes the risk of accidents. Vertical and horizontal lighting balance contributes to safe circulation and helps travelers feel confident and relaxed, even in high-traffic or transitional areas.

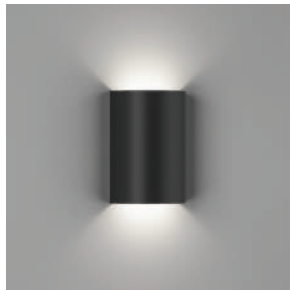
Our luminaires are engineered for durability and energy efficiency, suitable for both indoor and outdoor use — from passenger terminals and waiting areas to parking spaces and loading zones. Many models can be equipped with emergency lighting functions and smart control systems that monitor usage, adjust light levels automatically, and ensure compliance with international safety and electromagnetic compatibility standards.

Through innovative design and sustainable materials, BRIGHT transforms transportation lighting into a seamless blend of functionality, comfort, and environmental responsibility — creating brighter, safer, and more human-centered travel experiences.





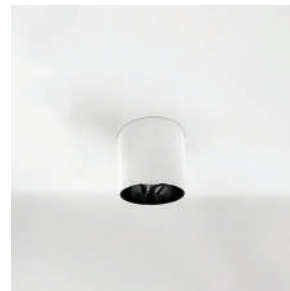
AVUS 40 UP DOWN



VERGO WALL 6



PENDO 1 IP65 WALL RGB H.P.LED



VITIS 200



CELER 1 SQ





BR//GHT
SPECIAL LIGHTING



AVUS 40 DOWN



TAPE LED ASTON 1220 BLACK



STATUR 2 CCT 215



PENDO 1 IP65 CEILING



STATUR





STF 176



PALIO 2 L LED OPAL



META



MERUS



PURE 80 ASYMMETRIC



LIGHTING TRACK SYSTEMS

ST1 MAGNETIC TRACK 48V



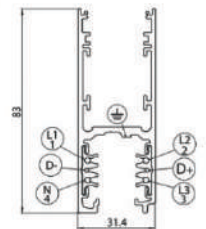
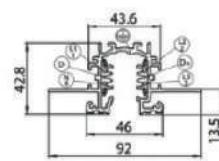
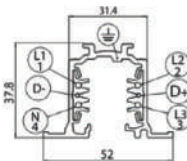
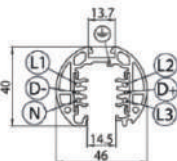
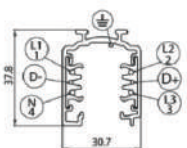
ST2 MAGNETIC TRACK 48V



ST5 MAGNETIC TRACK 48V



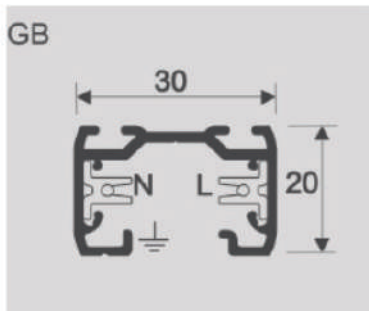
ST8 MAGNETIC TRACK 48V



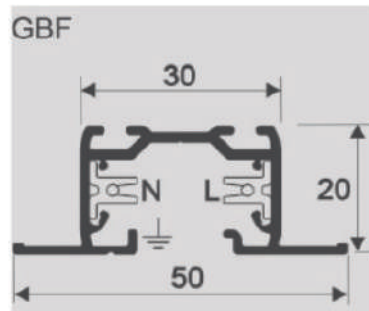
Circuit (1c) Track System

Circuit (3c) Track System

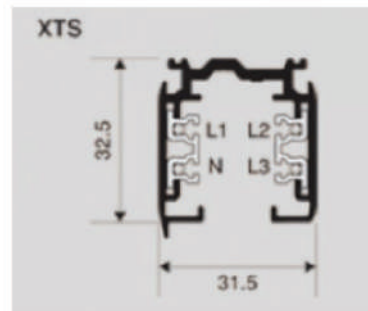
GB



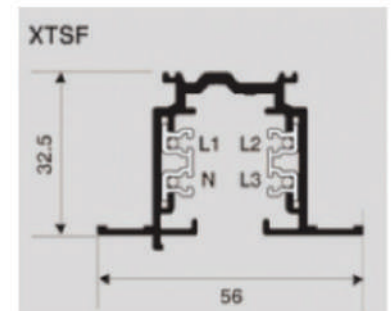
GBF



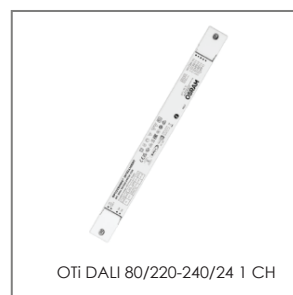
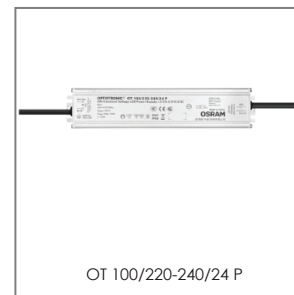
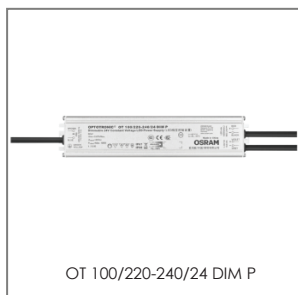
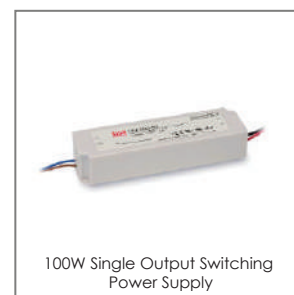
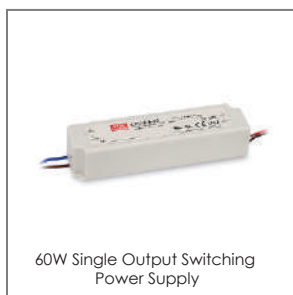
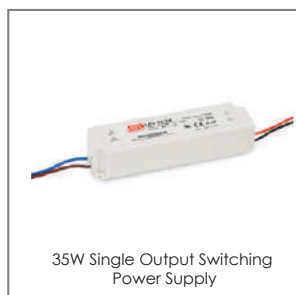
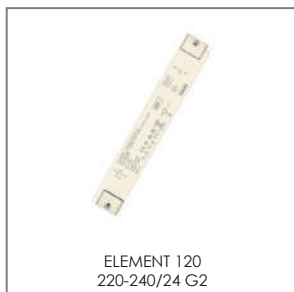
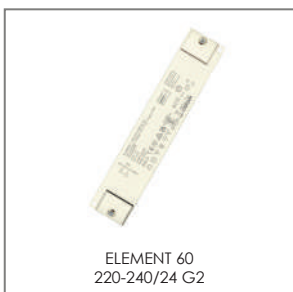
XTS



XTSF



DRIVERS



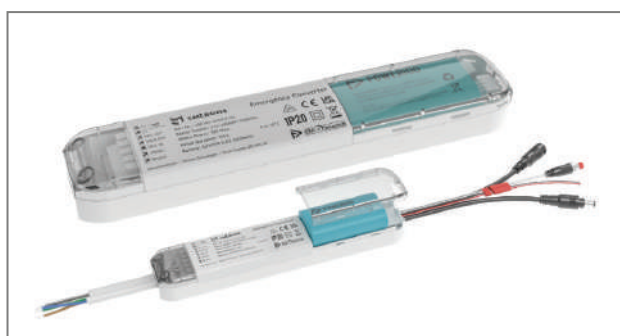
EMERGENCY LIGHTS



EMERGENCY LIGHT WALL



EMERGENCY LIGHT SP



LED EMERGENCY KIT

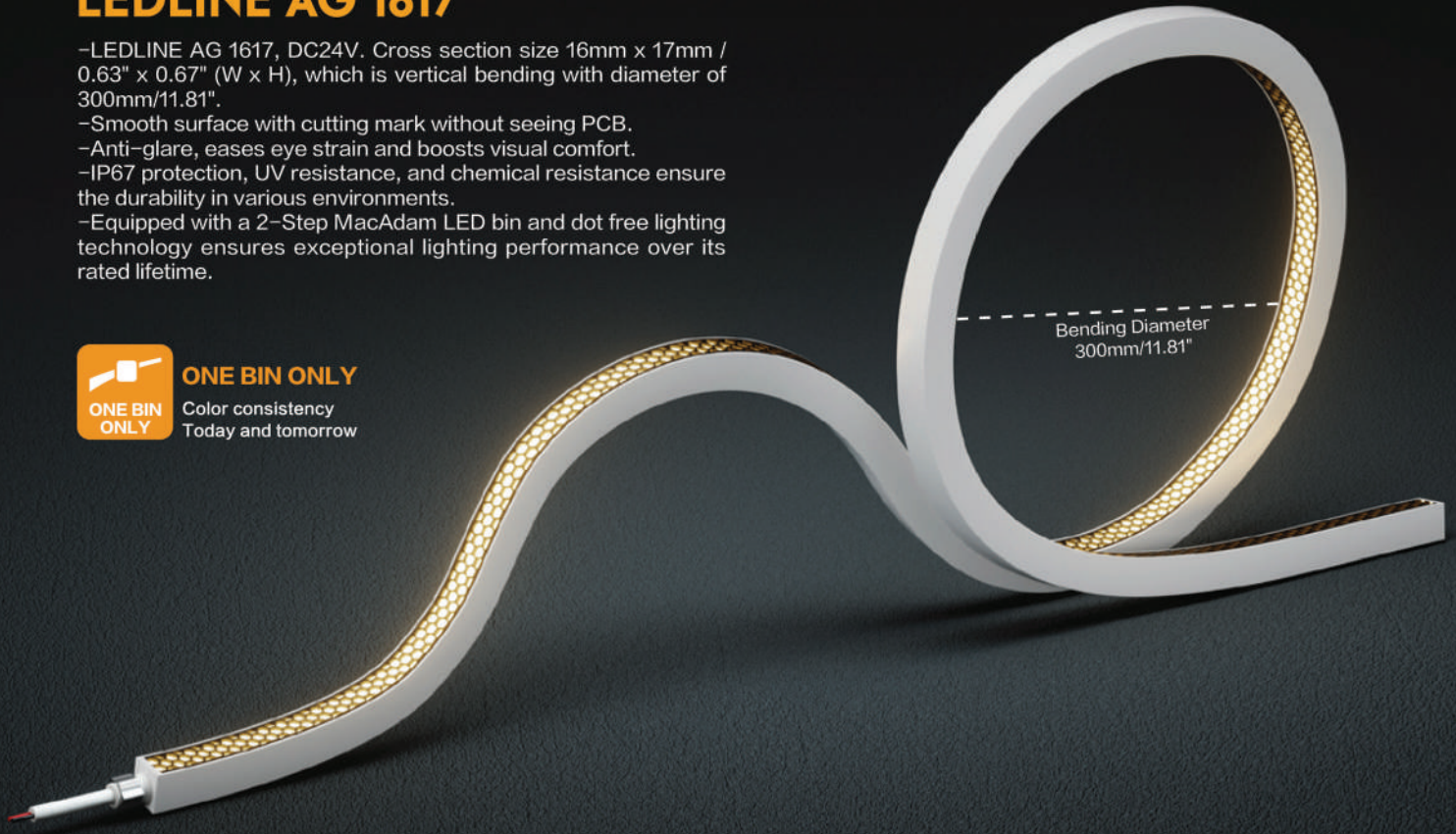
LED STRIPS

LEDLINE AG 1617

- LEDLINE AG 1617, DC24V. Cross section size 16mm x 17mm / 0.63" x 0.67" (W x H), which is vertical bending with diameter of 300mm/11.81".
- Smooth surface with cutting mark without seeing PCB.
- Anti-glare, eases eye strain and boosts visual comfort.
- IP67 protection, UV resistance, and chemical resistance ensure the durability in various environments.
- Equipped with a 2-Step MacAdam LED bin and dot free lighting technology ensures exceptional lighting performance over its rated lifetime.



ONE BIN ONLY
Color consistency
Today and tomorrow



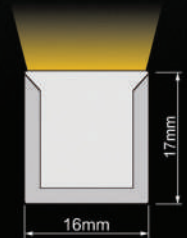
Note:

- The max. run length of using Integrated Endcap and DIY Endcap is different. Please refer to the below table.
- Max. run length refers to single side feed in serial connection.
- The given data are typical values due to the tolerances of the production process and the electrical components, values for light output and electrical power can vary up to 10%.
- The given color temperature is the temperature of finished product.



PARAMETER

Voltage	DC24V (23.5V _{min} , 24.5V _{max})
LED PIN Temperature	Max. 65°C /149°F
Storage Temperature	-40°C /-40°F _{min} , 60°C /140°F _{max}
Ambient Temperature	Ta _{min} =-40°C /-40°F, Ta _{max} (Table below)
Ambient Installation Temperature	-40°C /-40°F _{min} , 85°C /185°F _{max}



DATA	STD output @3000K	High output @3000K
Power(W/m W/ft)	9.6/2.9	14.4/4.4
Efficacy(lm/W)	20.5	19.1
Max. Ambient Tempt.(Ta _{max})	45°C /113°F	45°C /113°F

SPECIFICATION

Power	LM/Mtr							CRI	Max. Run Length	Unit Cut	UGR
	2200K	2700K	3000K	3500K	4000K	5300K					
9.6 W/M	154	172	186	182	180	180	≥ 90	CC 20m	50mm	<19	
14.4 W/M	233	256	260	272	265	260	≥ 90	CC 15m	50mm	<19	



LEDLINE APO 10 HE

- Excellent lighting performance with high lumen output 100lm/w.
- Up to 15m long run design solution optional for more flexible application.
- Ultra-thin and elegant design with totally dot-free visual performance.
- Strong reliability due to the co-extrusion technique. High light transmittance, anti-corrosion&anti-UV.
- 3-Step MacAdam LED bin guarantees the most excellent lighting performance over the rated lifetime.



ONE BIN ONLY

Color consistency
Today and tomorrow



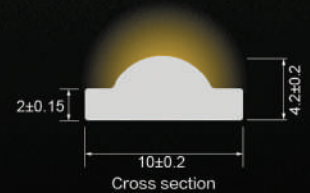
Note:

- Max. run length refers to single side feed in serial connection.
- The given data are typical values due to the tolerances of the production process and the electrical components, values for light output and electrical power can vary up to 10%.
- The given color temperature is the temperature of finished product.



PARAMETER

LEDs/m	280LEDs/m
Voltage	DC24V
Width	10mm
Storage Temperature	-25°C / -13°F _{min} 60°C / 140°F _{max}
Life Span	>54000H
Waterproof rate	IP65
Warranty	5 Years
CRI	Ra ≥ 90



DATA	STD output
Power(W/m W/ft)	9.6/2.9
Efficacy(lm/W) @4000K	102
Max. Ambient Tempt.(Ta _{max})	45°C /113°F

SPECIFICATION

LM/Mtr	Power	2200K	2700K	3000K	3500K	4000K	5700K	Unit Cut	Max. Run Length
		9.6W/M	840	920	970	960	980		
14.4W/M	1260	1380	1455	1440	1470	1455	25mm	10m	



LEDLINE ACE 1010 WHT

-LEDLINE ACE 1010 WHT, DC24V. Cross section size 10mm x 10mm / 0.39" x 0.39" (W x H), which is vertical bending with diameter of 100mm/3.93".

-3-side emitting design provides a wider beam angle for a more uniform and extensive lighting effect.

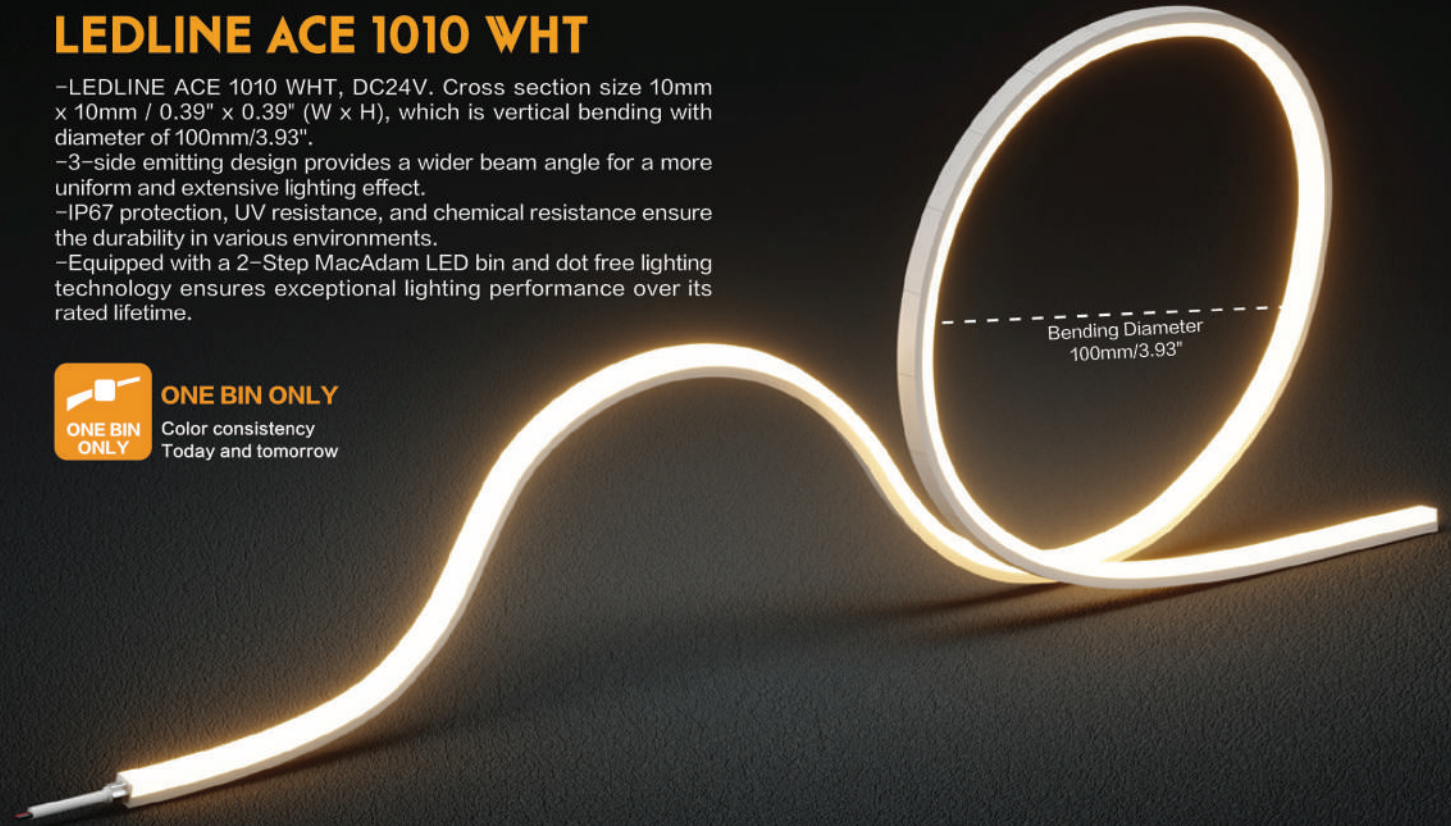
-IP67 protection, UV resistance, and chemical resistance ensure the durability in various environments.

-Equipped with a 2-Step MacAdam LED bin and dot free lighting technology ensures exceptional lighting performance over its rated lifetime.



ONE BIN ONLY

Color consistency
Today and tomorrow



Bending Diameter
100mm/3.93"

Note:

-Max.run length refers to single side feed in serial connection.

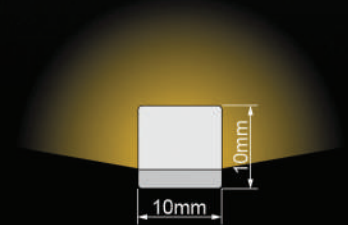
-The given data are typical values due to the tolerance of the production process and the electrical components, values for light output and electrical power can vary up to 10%.

-The given color temperature is the temperature of finished product.



PARAMETER

Voltage	DC24V (23.5Vmin, 24.5Vmax)
LED PIN Temperature	Max. 65°C /149°F
Storage Temperature	-40°C /-40°F _{min} , 60°C /140°F _{max}
Ambient Temperature	T _{a min} =-40°C /-40°F, T _{a max} =45°C /113°F
Ambient Installation Temperature	-40°C /-40°F _{min} , 85°C /185°F _{max}
CRI	Ra ≥ 90



DATA	STD output
Power(W/m W/ft)	11/3.4
Efficacy(lm/W)@4000K	83.2
Max. Ambient Tmpt.(T _{a max})	45°C /113°F

SPECIFICATION

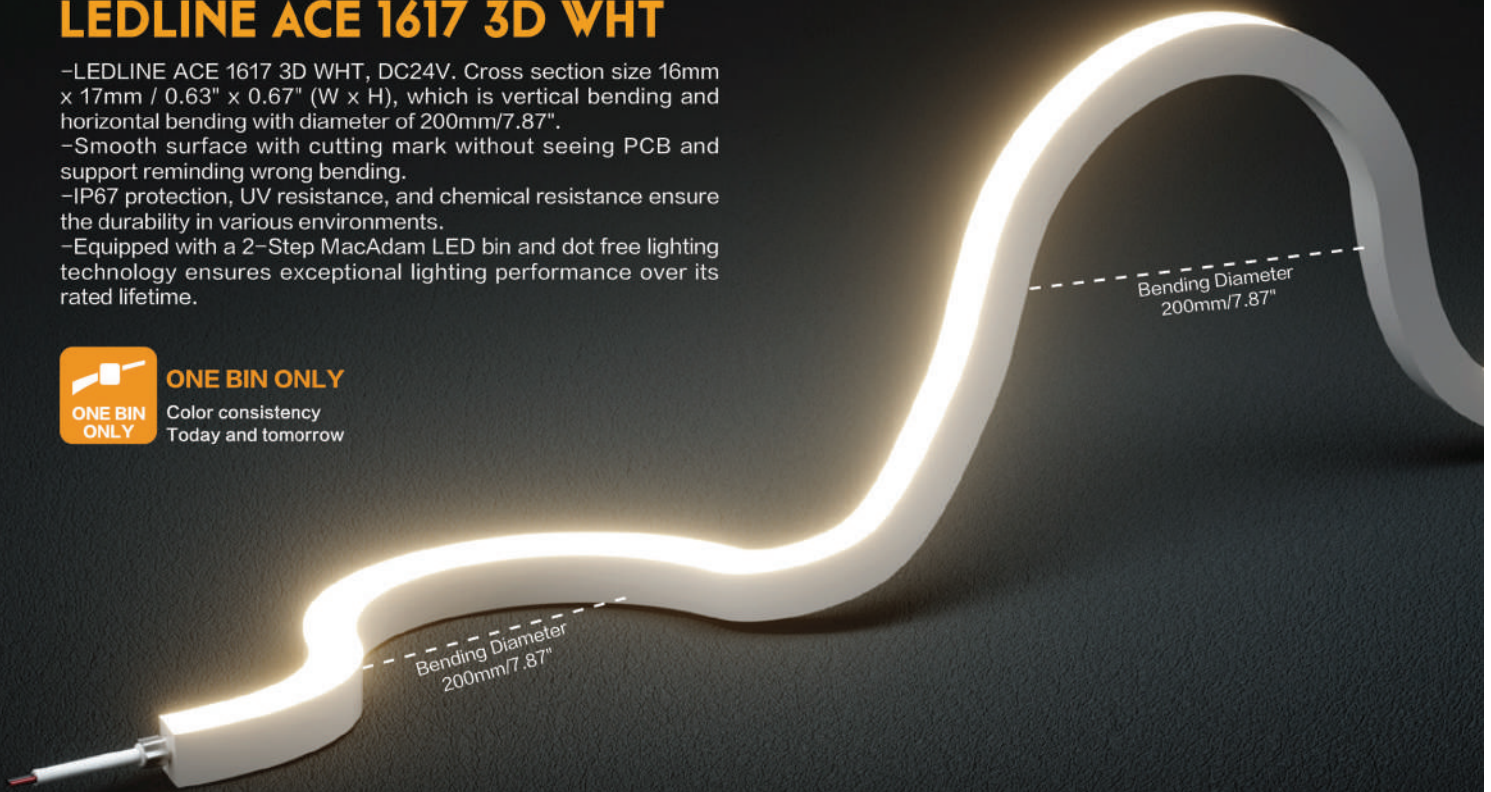
White	Power	LM/Mtr						Max. Run Length	Unit Cut
		2200K	2700K	3000K	3500K	4000K	5300K		
	11W/M	800	830	850	860	915	880	CC 13m	41.66mm

LEDLINE ACE 1617 3D WHT

- LEDLINE ACE 1617 3D WHT, DC24V. Cross section size 16mm x 17mm / 0.63" x 0.67" (W x H), which is vertical bending and horizontal bending with diameter of 200mm/7.87".
- Smooth surface with cutting mark without seeing PCB and support reminding wrong bending.
- IP67 protection, UV resistance, and chemical resistance ensure the durability in various environments.
- Equipped with a 2-Step MacAdam LED bin and dot free lighting technology ensures exceptional lighting performance over its rated lifetime.



ONE BIN ONLY
Color consistency
Today and tomorrow



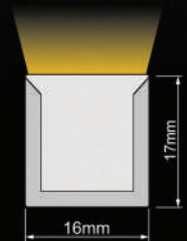
Note:

- Max. run length refers to single side feed in serial connection.
- The given data are typical values due to the tolerances of the production process and the electrical components, values for light output and electrical power can vary up to 10%.
- The given color temperature is the temperature of finished product.



PARAMETER

Voltage	DC24V (23.5V _{min} , 24.5V _{max})
LED PIN Temperature	Max. 90°C /194°F@Ta _{min} =45°C
Storage Temperature	-40°C /-40°F _{min} , 60°C /140°F _{max}
Ambient Temperature	Ta _{min} =-40°C /-40°F, Ta _{max} =45°C /113°F
Ambient Installation Temperature	-40°C /-40°F _{min} , 85°C /185°F _{max}
CRI	Ra ≥ 90
LED Distance	8.33mm
Mini Cutting Unit	6LEDs(1 unit)
Beam Angle	120°
Package Length	≤ 20m



DATA	STD output@3000K
Power(W/m W/ft)	9.6/2.93
Efficacy(lm/W)	55.0
Max. Ambient tempt.(Ta _{max})	55°C /131°F

SPECIFICATION

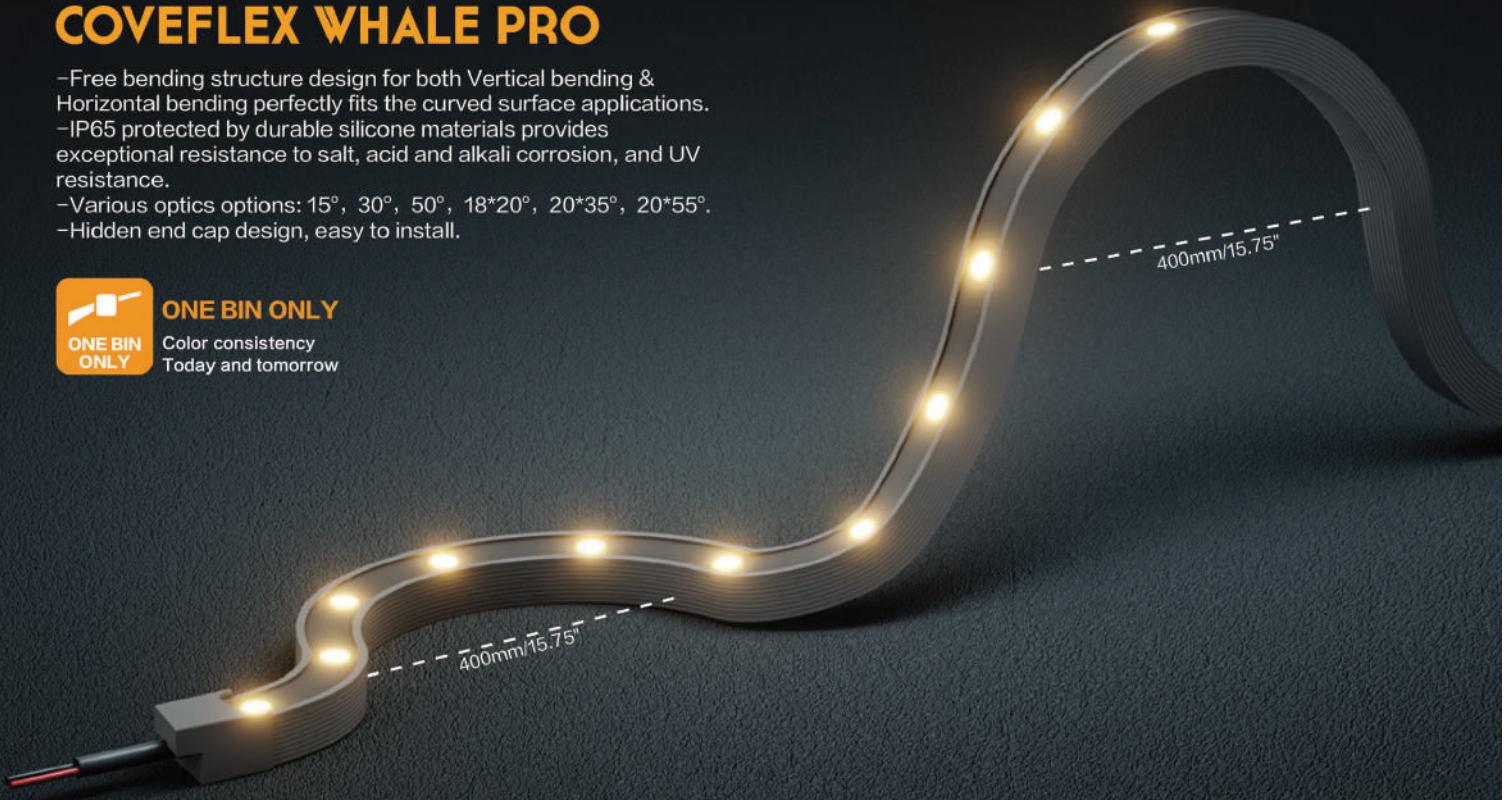
White	LM/Mtr Power	2200K	2700K	3000K	3500K	4000K	5300K	Max. Run Length	Unit Cut
		9.6W/M	490	510	530	540	540		

COVEFLEX WHALE PRO

- Free bending structure design for both Vertical bending & Horizontal bending perfectly fits the curved surface applications.
- IP65 protected by durable silicone materials provides exceptional resistance to salt, acid and alkali corrosion, and UV resistance.
- Various optics options: 15°, 30°, 50°, 18*20°, 20*35°, 20*55°.
- Hidden end cap design, easy to install.



ONE BIN ONLY
Color consistency
Today and tomorrow



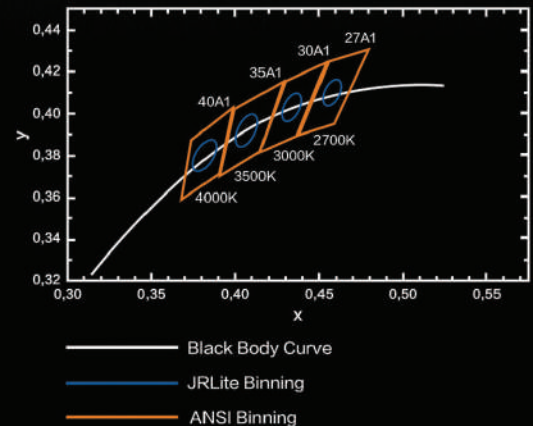
Note:
-Max. run length refers to single side feed in serial connection.
-The given data are typical values due to the tolerances of the production process and the electrical components, values for light output and electrical power can vary up to 10%.
-The given color temperature is the temperature of finished product.



PARAMETER

CRI	Ra80
SMD Type	2835
LEDs/m	24LEDs/m
Power/m	24W/M
Voltage	DC24V(23.5Vmin, 24.5Vmax)
Max Reel Length	5000mm
Storage Temperature	-25°C ~+40°C
LED PIN Temperature	Max.65°C /149°F
Life Span	>30000H
Waterproof rate	IP65
Warranty	5 Years

Binning



SPECIFICATION



CCT	POWER	LM/Mtr	Unit Cut(CC)	Max. Run Length
2700K	24W	1780	41.5mm	5M
3000K	24W	1815	41.5mm	5M
4000K	24W	1950	41.5mm	5M
6500K	24W	1840	41.5mm	5M

LEDLINE ACE 1617 MEDIA RGBW

-LEDLINE ACE 1617 MEDIA RGBW, DC24V. Cross section size 16mm x 17mm / 0.63" x 0.67" (W x H), which is vertical bending with diameter of 300mm/11.81".

-Smooth surface with cutting mark without seeing PCB and support reminding wrong bending.

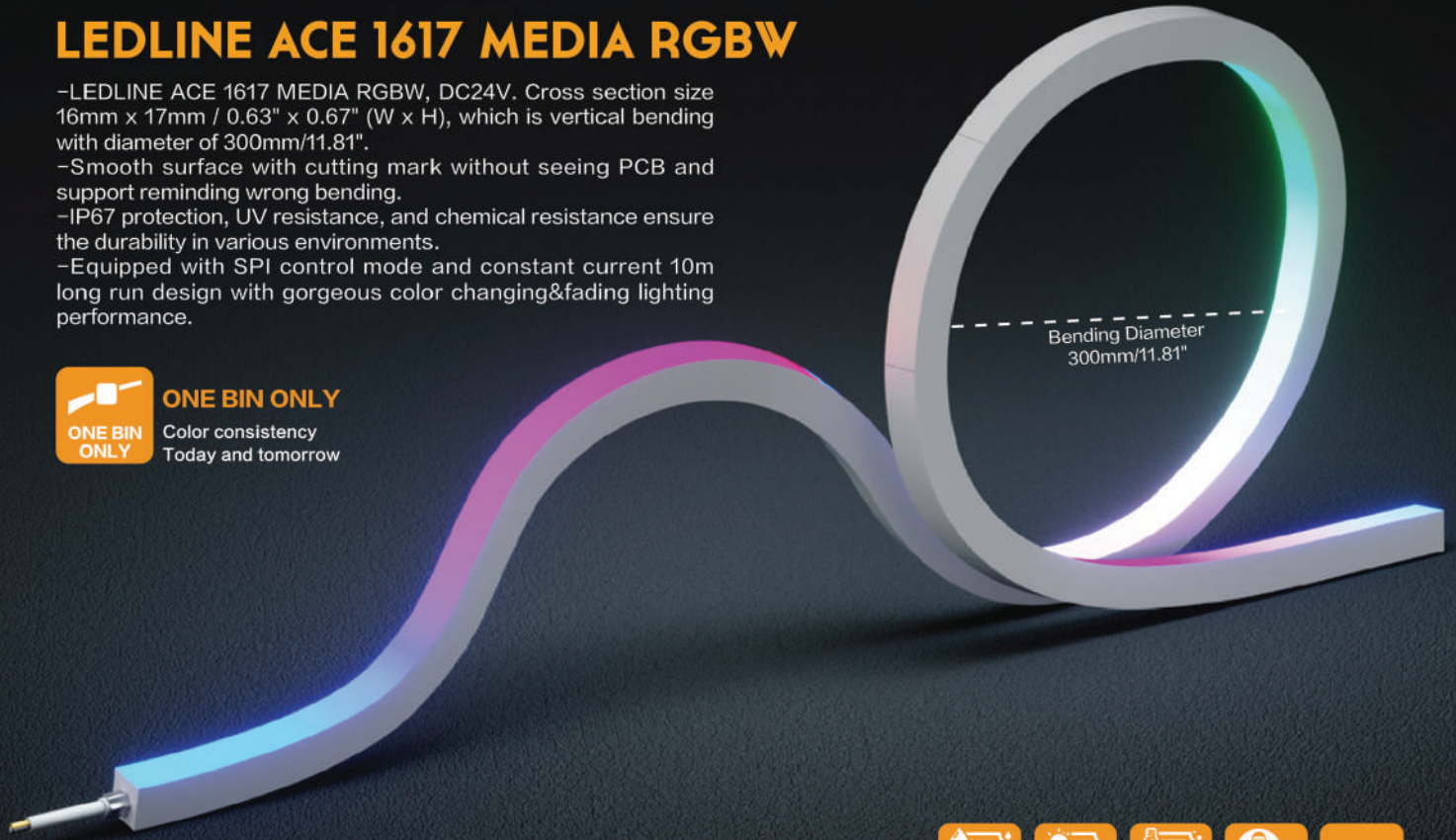
-IP67 protection, UV resistance, and chemical resistance ensure the durability in various environments.

-Equipped with SPI control mode and constant current 10m long run design with gorgeous color changing&fading lighting performance.



ONE BIN ONLY

Color consistency
Today and tomorrow



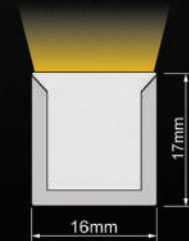
Note:

- Max. run length refers to single side feed in serial connection.
- The given data are typical values due to the tolerances of the production process and the electrical components, values for light output and electrical power can vary up to 10%.
- The given color temperature is the temperature of finished product.



PARAMETER

Voltage	DC24V (23.5Vmin, 24.5Vmax)
LED PIN Temperature	Max. 65°C /149°F
Storage Temperature	-40°C /-40°F _{min} , 60°C /140°F _{max}
Ambient Temperature	Ta _{min} =-40°C /-40°F, Ta _{max} =45°C /113°F
Ambient Installation Temperature	-40°C /-40°F _{min} , 85°C /185°F _{max}
CRI	Ra ≥ 80
LED Distance	11.9mm
Mini Cutting Unit	7LEDs(1 unit)
LEDs/M	84
Beam Angle	110°
Package Length	≤ 30m
Pixel/M	12
Control Mode	SPI



SPECIFICATION



	CCT	LM/Mtr	Max.Watt	Max. Run Length	Unit Cut
	R	116	8W/M	CC 10m	83.3mm
	G	222	8W/M	CC 10m	83.3mm
	B	53	8W/M	CC 10m	83.3mm
	W27	273	8W/M	CC 10m	83.3mm
	W30	286	8W/M	CC 10m	83.3mm
	W40	300	8W/M	CC 10m	83.3mm
	RGBW30	624	22W/M	CC 10m	83.3mm

COVEFLEX POP

- The most popular specification allows for versatile installations, suitable for wide range of indoor applications.
- High brightness output and great energy efficiency
- Uniform lighting with perfect color consistency due to the utilization of one BIN only
- Long lifespan and excellent in heat dissipation.



ONE BIN ONLY

Color consistency Today and tomorrow



Note:

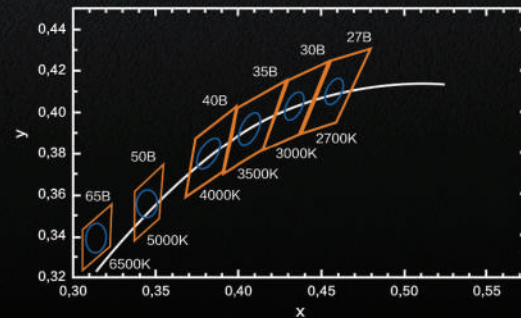
-The given data are typical values due to the tolerances of the production process and the electrical components, values for light output and electrical power can vary up to 10%.



PARAMETER

Lumen efficiency	100lm/w(4000K)
LED SDCM	3
CRI	Ra90;Ra80 optional
SMD Type	2835
LEDs/m	120LEDs/m
Max current/LED	50mA
Voltage	DC24V(12V optional; ± 0.5V)
Width	10mm
Unit cut	50mm
Storage Temperature	-25°C / -13°F _{min} / 60°C / 140°F _{max}
LED PIN Temperature	Max.65°C / 149°F
Life Span	>54000H
Waterproof rate	IP20
Warranty	5 Years

Binning



- Black Body Curve
- JRLite Binning
- ANSI Binning

SPECIFICATION



White

Power	LM/Mtr	2700K	3000K	4000K	6500K	Max. Run Length
4.8W/M		450	465	481	507	5M
9.6W/M		899	917	965	970	5M
14.4W/M		1320	1385	1450	1457	5M
19.2W/M		1858	1898	1970	1989	5M
24W/M		2200	2289	2380	2350	5M

ORDER CODE

SERIES NAME	COLOR	LENGTH	POWER
POP	27=2700K	05000=5M/196.85"	048=4.8W

Example
POP-27-05000-048:
COVEFLEX POP, 2700K, 5M/reel, 4.8W/m.

